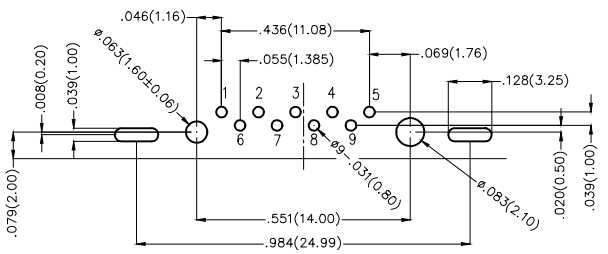
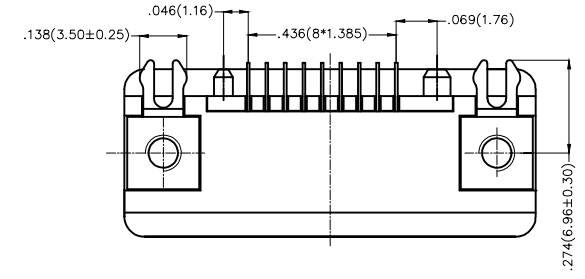
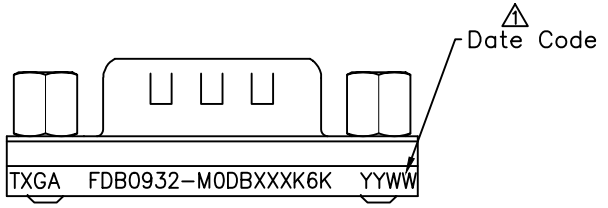
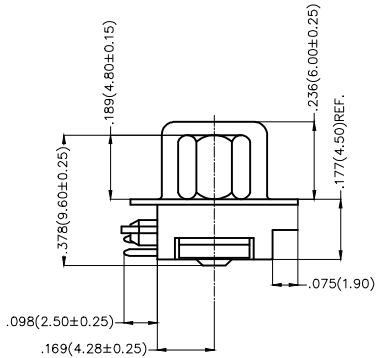
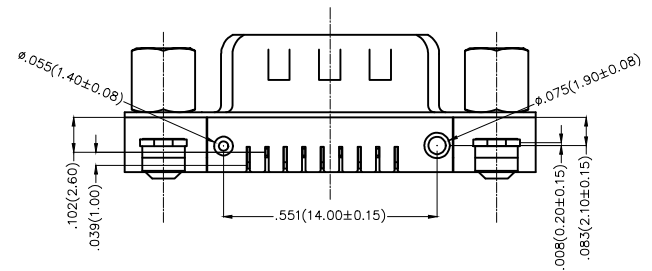
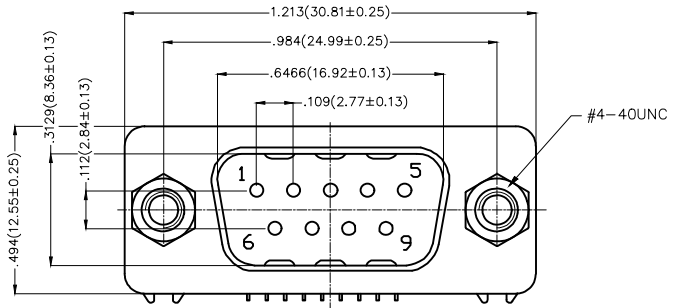


REV	LOCATIONS	DESCRIPTION	DATE	REVISER	APPD
1	△	Add marking code	13/Jan/25	NICK	LEO

SPECIFICATIONS

- Electrical
- 1.Current Rating: 3A AC(rms)/DC
 - 2.Voltage Rating: 250V AC(rms)/DC
 - 3.Contact Resistance: 25 mΩ Max
 - 4.Insulation Resistance: 1000 MΩ MIN /DC 500V
 - 5.Withstanding Voltage: 1000V AC r.m.s
 - 6.Temperature Range-Operating: -55°C~+105°C
- Material and Finish
- 1.Housing: PBT UL 94V-0
 - 2.Contact: Brass/Gold plated or Selective gold on contact area, tin on tail
 - 3.Shell: Cold Rolled Steel/Nickel Plated
 - 4.Screws: Brass/Nickel Plated



Recommended P.C.Board Layout

Ordering Information

FDB 09 32 - M0 D B X XX K6 K
 1 2 3 4 5 6 7 8 9 10

1 Category FDB- D-SUB	2 Circuits 09	3 Distinction No. 32	4 Type M0-Male	5 Assembly Layout D-DIP	6 Entry Angle B-90° Angle
7 Plating 1-Gold plated 3-Selective gold on contact area, tin on tail	8 Thickness of Plating 00-Gold Flash 03-3μ" Custom plate available	9 Color-Resin K6-Black	10 Packaging K-Tray		

<p>THIRD ANGLE PROJECTION</p>	GENERAL TOLERANCES (UNLESS SPECIFIED)		APPROVE BY FRANK	DATE 10/MAY/22	PART NO. FDB0932-MODBXXXK6K	ITEM NO. FDB0932	<p>Leader Of Industry</p>	
	X.±.012(0.30)	X.±5°	CHECKED BY CHERRY	DATE 10/MAY/22	TITLE D-SUB Connector 9 Circuits 90° Angle Male			
DESIGN UNITS Inch (metric)	X.X±.008(0.20)	X.±2°	DRAWN BY MATT	DATE 10/MAY/22	THIS DRAWING CONTAINS INFORMATION THAT IS PROPRIETARY TO TXGA INDUSTRIAL ELECTRONICS(S.Z)CO.,LTD AND SHOULD NOT BE USED WITHOUT WRITTEN PERMISSION		REV 1	SHEET NO. 1/1
SCALE 5:1	SIZE A4	X.XX±.006(0.15)						
		X.XXX±.004(0.10)						