

REV	LOCATIONS	DESCRIPTION	DATE	REVISER	APPD
1	△	Add marking code	13/Jan/25	NICK	LEO

### SPECIFICATIONS

#### Electrical

Insulation Resistance: 3000 MΩ MIN

Withstanding Voltage: 250V AC r.m.s

Temperature Range—Operating: -45°C~+85°C

#### Material and Plating

Housing: PBT (UL 94V-0) Black

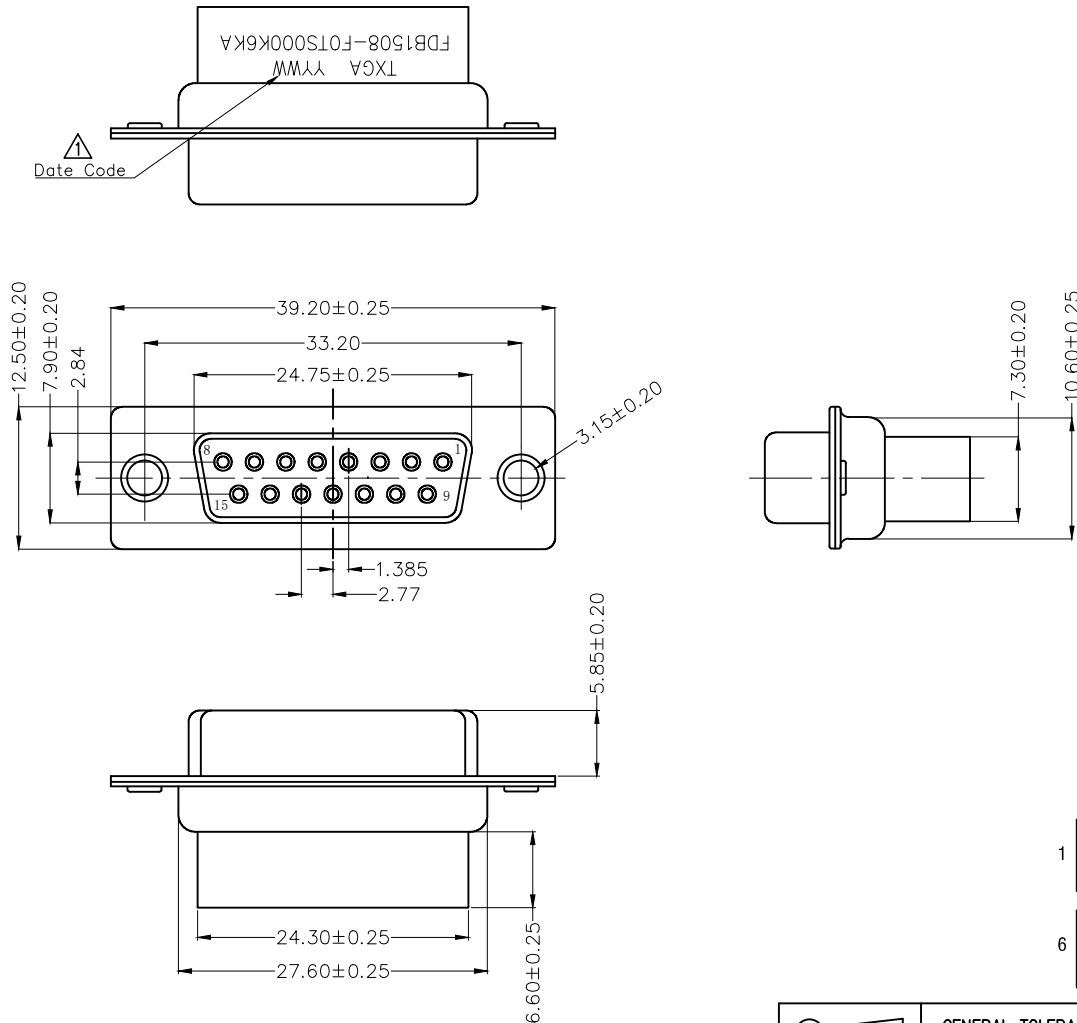
Front Shell: Spcc/ Nickel plated

Back Shell: Spcc/ Tin plated

### Ordering Information

FDB 15 08 - F0 T S 0 00 K6 K A  
 1 2 3 4 5 6 7 8 9

1	Category FDB- D-SUB	2	Circuits 15	3	Distinction No. 08	4	Type F0-Female	5	Assembly Layout T-Terminal type
6	Entry Angle S-180° Vertical	7	Color-Resin K6-Black	8	Packaging K-Tray	9	Distinction Type A-A Type		



 THIRD ANGLE PROJECTION	GENERAL TOLERANCES (UNLESS SPECIFIED)		APPROVE BY FRANK	DATE 14/JUN/22	PART NO. FDB1508-F0TS000K6KA	ITEM NO. FDB1508	 Leader Of Industry
	DESIGN UNITS Metric	X.±0.30	X.'±5'	CHECKED BY CHERRY	DATE 14/JUN/22	TITLE D-SUB Connector 15Circuits Terminal type Female	
SCALE 5:1	SIZE A4	X.XX±0.20	X.'±2'	DRAWN BY MATT	DATE 14/JUN/22	THIS DRAWING CONTAINS INFORMATION THAT IS PROPRIETARY TO TXGA INDUSTRIAL ELECTRONICS(S.Z)CO.,LTD AND SHOULD NOT BE USED WITHOUT WRITTEN PERMISSION	
		X.XX±0.15	.XX'±1'			REV 1	SHEET NO. 1/1
		X.XXX±0.10	.XXX'±0.5'				

REV	LOCATIONS	DESCRIPTION	DATE	REVISER	APPD
1	△	Add marking code	13/Jan/25	NICK	LEO

### SPECIFICATIONS

#### Electrical

Insulation Resistance: 3000 MΩ MIN  
 Withstanding Voltage: 250V AC r.m.s  
 Temperature Range—Operating: -45°C~+85°C

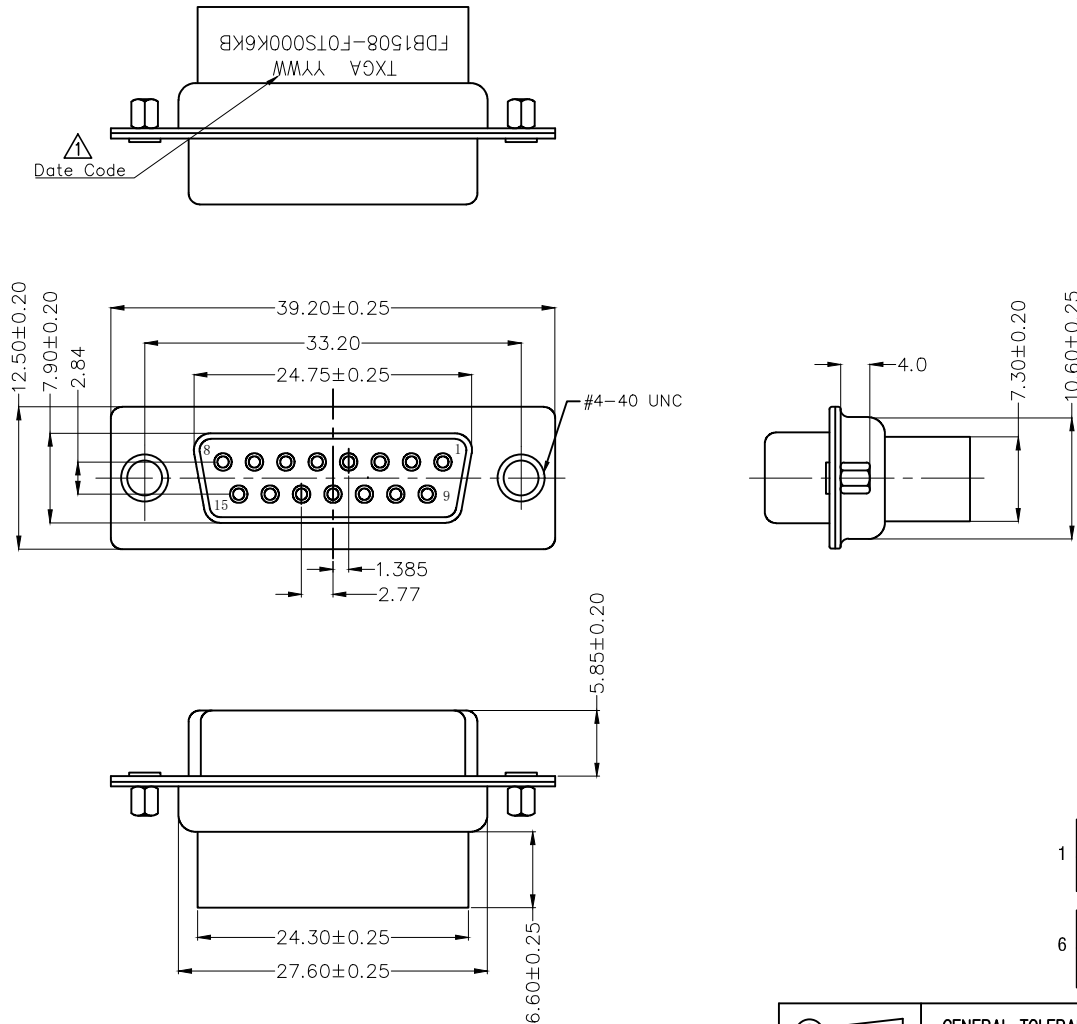
#### Material and Plating

Housing: PBT (UL 94V-0) Black  
 Front Shell: Spcc/ Nickel plated  
 Back Shell: Spcc/ Tin plated

### Ordering Information

FDB 15 08 — F0 T S 0 00 K6 K B  
 1 2 3 4 5 6 7 8 9

1	Category FDB- D-SUB	2	Circuits 15	3	Distinction No. 08	4	Type F0-Female	5	Assembly Layout T-Terminal type
6	Entry Angle S-180° Vertical	7	Color-Resin K6-Black	8	Packaging K-Tray	9	Distinction Type B-B Type		



 THIRD ANGLE PROJECTION	GENERAL TOLERANCES (UNLESS SPECIFIED)		APPROVE BY FRANK	DATE 14/JUN/22	PART NO. FDB1508-F0TS000K6KB	ITEM NO. FDB1508	 Leader Of Industry
	DESIGN UNITS Metric	X.±0.30	X.'±5'	CHECKED BY CHERRY	DATE 14/JUN/22	TITLE D-SUB Connector 15Circuits Terminal type Female	
SCALE 5:1	SIZE A4	X.XX±0.20	X.'±2'	DRAWN BY MATT	DATE 14/JUN/22	THIS DRAWING CONTAINS INFORMATION THAT IS PROPRIETARY TO TXGA INDUSTRIAL ELECTRONICS(S.Z)CO.,LTD AND SHOULD NOT BE USED WITHOUT WRITTEN PERMISSION	
		X.XX±0.15	.XX'±1'			REV 1	SHEET NO. 1/1
		X.XXX±0.10	.XXX'±0.5'				

REV	LOCATIONS	DESCRIPTION	DATE	REVISER	APPD
1	△	Add marking code	13/Jan/25	NICK	LEO

### SPECIFICATIONS

#### Electrical

Insulation Resistance: 3000 MΩ MIN  
 Withstanding Voltage: 250V AC r.m.s  
 Temperature Range—Operating: -45°C~+85°C

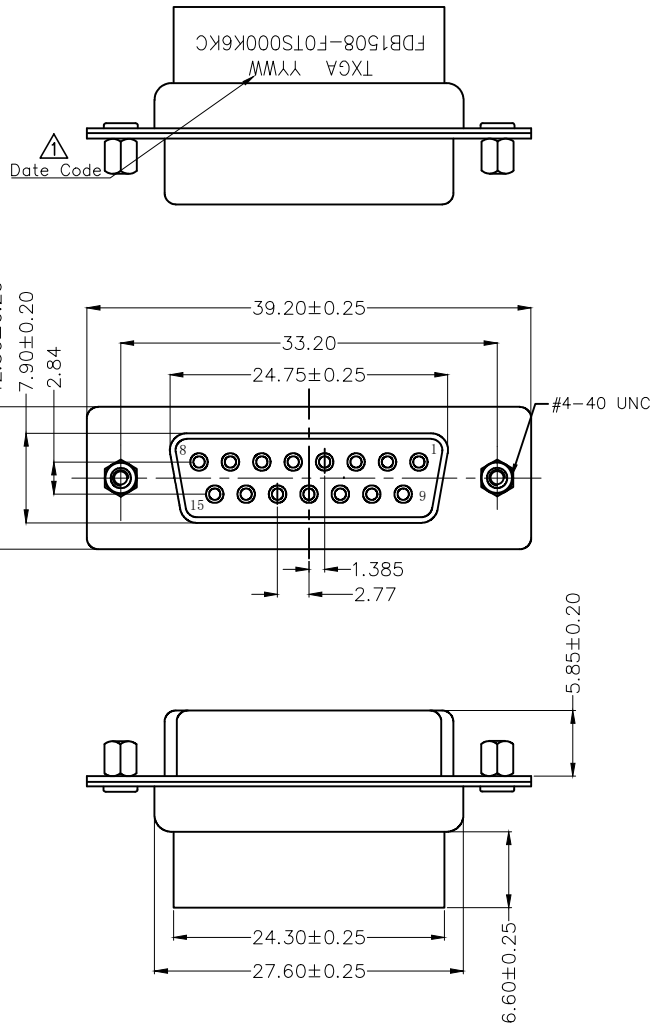
#### Material and Plating

Housing: PBT (UL 94V-0) Black  
 Front Shell: Spcc/ Nickel plated  
 Back Shell: Spcc/ Tin plated

### Ordering Information

FDB 15 08 - F0 T S 0 00 K6 K C  
 1 2 3 4 5 6 7 8 9

1	Category FDB- D-SUB	2	Circuits 15	3	Distinction No. 08	4	Type F0-Female	5	Assembly Layout T-Terminal type
6	Entry Angle S-180° Vertical	7	Color-Resin K6-Black	8	Packaging K-Tray	9	Distinction Type C-C Type		



 THIRD ANGLE PROJECTION	GENERAL TOLERANCES (UNLESS SPECIFIED)		APPROVE BY FRANK	DATE 14/JUN/22	PART NO. FDB1508-FOTS000K6KC	ITEM NO. FDB1508	 Leader Of Industry
	DESIGN UNITS Metric	X.±0.30	X.'±5'	CHECKED BY CHERRY	DATE 14/JUN/22	TITLE D-SUB Connector 15Circuits Terminal type Female	
SCALE 5:1	SIZE A4	X.XX±0.20	X.'±2'	DRAWN BY MATT	DATE 14/JUN/22	THIS DRAWING CONTAINS INFORMATION THAT IS PROPRIETARY TO TXGA INDUSTRIAL ELECTRONICS(S.Z)CO.,LTD AND SHOULD NOT BE USED WITHOUT WRITTEN PERMISSION	
		X.XX±0.15	.XX'±1'			REV 1	SHEET NO. 1/1
		X.XXX±0.10	.XXX'±0.5'				