

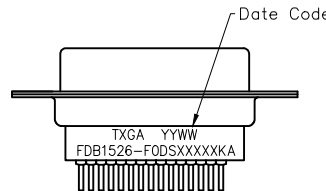
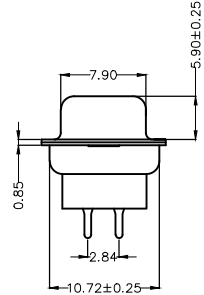
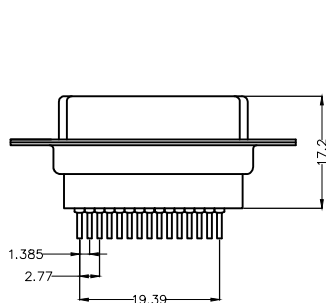
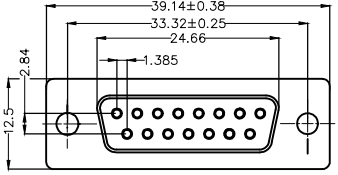
REV	LOCATIONS	DESCRIPTION	DATE	REVISER	APPD

Electrical

Current Rating: 3A AC(rms)/DC
 Voltage Rating: 250V AC(rms)/DC
 Contact Resistance: 25 mΩ Max
 Insulation Resistance: 1000 MΩ MIN
 Withstanding Voltage: 500V AC r.m.s
 Temperature Range—Operating: -55°C~+105°C

Material and Plating

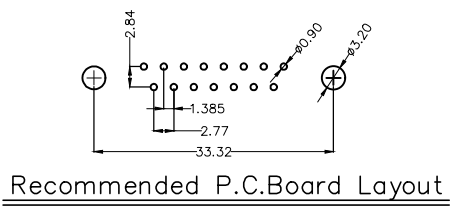
Housing: PBT(UL 94V-0)
 Contact Pin: Phosphor Bronze
 Plating: Gold Plated/Selective gold in contact area, tin on tail



Ordering Information

FDB 15 26 - F0 D S X XX XX K A
 1 2 3 4 5 6 7 8 9 10 11

1	Category FDB-D-SUB Connectors	2	Circuits 15	3	Distinction No. 26	4	Type F0-Female	5	Assembly Layout D-DIP	6	Entry Angle S-180° Vertical
7	Plating 1-Gold Plated 3-Selective gold in contact area, tin on tail	8	Thickness of Plating 00-Gold Flash 03-3μ" Custom plate available	9	Color-Resin K6-Black U1-Blue	10	Packaging K-Tray	11	Distinction Type A-A Type		



<p>THIRD ANGLE PROJECTION</p>	GENERAL TOLERANCES (UNLESS SPECIFIED)		APPROVE BY LEO	DATE 02/AUG/23	PART NO. FDB1526-FDSXXXXXKA	ITEM NO. FDB1526	<p>Building Technology Cornerstone</p>
	X. ±0.30	X.* ±5°	CHECKED BY GISELLE	DATE 02/AUG/23	TITLE D-SUB Connectors 15 Circuits 180° Vertical Female		
DESIGN UNITS METRIC	X.X ±0.20	X.X* ±2°	DRAWN BY NICK	DATE 02/AUG/23	THIS DRAWING CONTAINS INFORMATION THAT IS PROPRIETARY TO TXGA INDUSTRIAL ELECTRONICS(S.Z)CO.,LTD AND SHOULD NOT BE USED WITHOUT WRITTEN PERMISSION		
SCALE 5:1	SIZE A4	X.XX ±0.15	X.XX* ±1°				
		X.XXX ±0.10	X.XXX* ±0.5°				

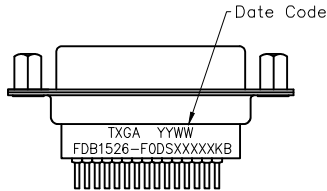
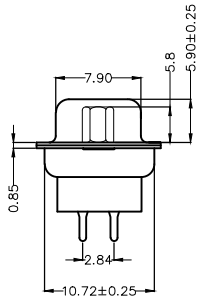
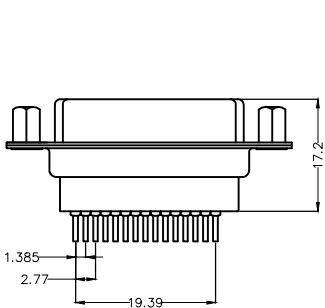
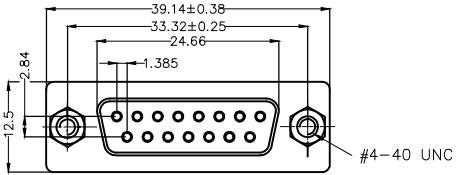
REV	LOCATIONS	DESCRIPTION	DATE	REVISER	APPD

Electrical

Current Rating: 3A AC(rms)/DC
 Voltage Rating: 250V AC(rms)/DC
 Contact Resistance: 25 mΩ Max
 Insulation Resistance: 1000 MΩ MIN
 Withstanding Voltage: 500V AC r.m.s
 Temperature Range—Operating: -55°C~+105°C

Material and Plating

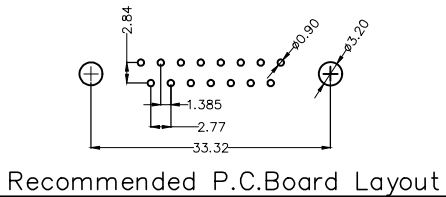
Housing: PBT(UL 94V-0)
 Contact Pin: Phosphor Bronze
 Plating: Gold Plated/Selective gold in contact area,tin on tail
 Nuts: Copper alloy/Nickel plated



Ordering Information

FDB 15 26 - F0 D S X XX XX K B
 1 2 3 4 5 6 7 8 9 10 11

1	Category FDB-D-SUB Connectors	2	Circuits 15	3	Distinction No. 26	4	Type F0-Female	5	Assembly Layout D-DIP	6	Entry Angle S-180° Vertical
7	Plating 1-Gold Plated 3-Selective gold in contact area, tin on tail	8	Thickness of Plating 00-Gold Flash 03-3μ" Custom plate available	9	Color-Resin K6-Black U1-Blue	10	Packaging K-Tray	11	Distinction Type B-B Type		

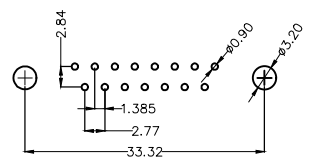
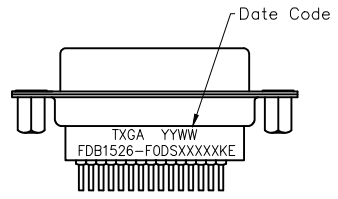
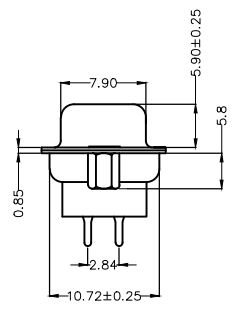
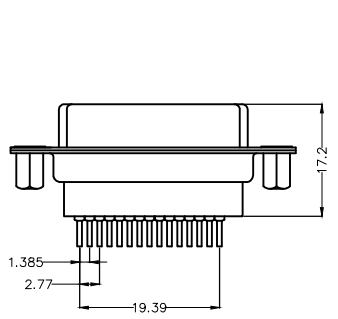
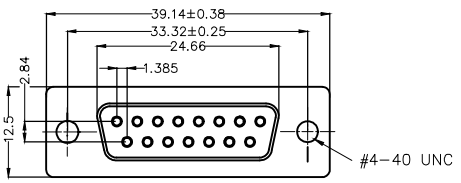


<p>THIRD ANGLE PROJECTION</p>	GENERAL TOLERANCES (UNLESS SPECIFIED)		APPROVE BY LEO	DATE 02/AUG/23	PART NO. FDB1526-F0DSXXXXXB	ITEM NO. FDB1526	<p>Building Technology Cornerstone</p>
	X. ±0.30	X.* ±5°	CHECKED BY GISELLE	DATE 02/AUG/23	TITLE D-SUB Connectors 15 Circuits 180° Vertical Female		
DESIGN UNITS METRIC	X.X ±0.20	X.X* ±2°	DRAWN BY NICK	DATE 02/AUG/23	THIS DRAWING CONTAINS INFORMATION THAT IS PROPRIETARY TO TXGA INDUSTRIAL ELECTRONICS(S.Z)CO.,LTD AND SHOULD NOT BE USED WITHOUT WRITTEN PERMISSION		
SCALE 5:1	SIZE A4	X.XX ±0.15	X.XX* ±1°				
		X.XXX ±0.10	X.XXX* ±0.5°				

1 2 3 4 5 6 7 8

REV	LOCATIONS	DESCRIPTION	DATE	REVISER	APPD

Electrical
 Current Rating: 3A AC(rms)/DC
 Voltage Rating: 250V AC(rms)/DC
 Contact Resistance: 25 mΩ Max
 Insulation Resistance: 1000 MΩ MIN
 Withstanding Voltage: 500V AC r.m.s
 Temperature Range—Operating: -55°C~+105°C
Material and Plating
 Housing: PBT(UL 94V-0)
 Contact Pin: Phosphor Bronze
 Plating: Gold Plated/Selective gold in contact area, tin on tail
 Nuts: Copper alloy/Nickel plated



Recommended P.C.Board Layout

Ordering Information

FDB 15 26 - F0 D S X XX XX K E
 1 2 3 4 5 6 7 8 9 10 11

1 Category FDB-D-SUB Connectors	2 Circuits 15	3 Distinction No. 26	4 Type F0-Female	5 Assembly Layout D-DIP	6 Entry Angle S-180° Vertical
7 Plating 1-Gold Plated 3-Selective gold in contact area, tin on tail	8 Thickness of Plating 00-Gold Flash 03-3μ" Custom plate available	9 Color-Resin K6-Black U1-Blue	10 Packaging K-Tray	11 Distinction Type E-E Type	

 THIRD ANGLE PROJECTION	GENERAL TOLERANCES (UNLESS SPECIFIED)		APPROVE BY LEO	DATE 02/AUG/23	PART NO. FDB1526-F0DSXXXXXE	ITEM NO. FDB1526	 Building Technology Cornerstone
	X. ±0.30	X.* ±5°	CHECKED BY GISELLE	DATE 02/AUG/23	TITLE D-SUB Connectors 15 Circuits 180° Vertical Female		
DESIGN UNITS METRIC	X.X ±0.20	X.X* ±2°	DRAWN BY NICK	DATE 02/AUG/23	THIS DRAWING CONTAINS INFORMATION THAT IS PROPRIETARY TO TXGA INDUSTRIAL ELECTRONICS(S.Z)CO.,LTD AND SHOULD NOT BE USED WITHOUT WRITTEN PERMISSION		
SCALE 5:1	SIZE A4	X.XX ±0.15	X.XX* ±1°	X.XXX ±0.10	X.XXX* ±0.5°		

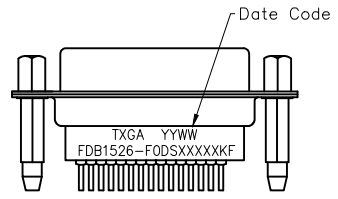
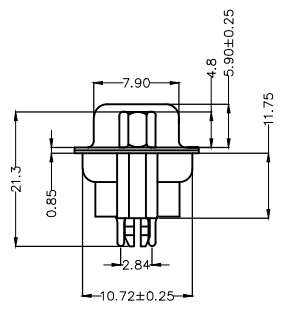
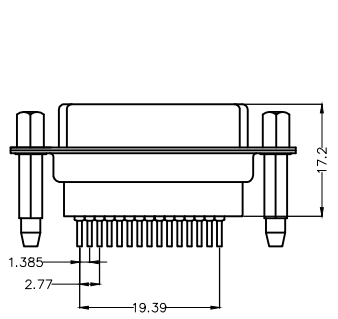
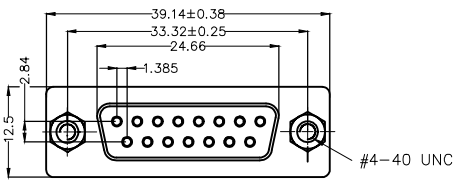
1 2 3 4 5 6 7 8

1 2 3 4 5 6 7 8

REV	LOCATIONS	DESCRIPTION	DATE	REVISER	APPD

Electrical
 Current Rating: 3A AC(rms)/DC
 Voltage Rating: 250V AC(rms)/DC
 Contact Resistance: 25 mΩ Max
 Insulation Resistance: 1000 MΩ MIN
 Withstanding Voltage: 500V AC r.m.s
 Temperature Range—Operating: -55°C~+105°C

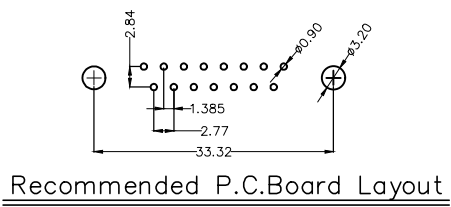
Material and Plating
 Housing: PBT(UL 94V-0)
 Contact Pin: Phosphor Bronze
 Plating: Gold Plated/Selective gold in contact area, tin on tail
 Screws: Copper alloy/Nickel plated
 Board lock: Copper alloy/Nickel plated



Ordering Information

FDB 15 26 - F0 D S X XX XX K F
 1 2 3 4 5 6 7 8 9 10 11

1 Category FDB-D-SUB Connectors	2 Circuits 15	3 Distinction No. 26	4 Type F0-Female	5 Assembly Layout D-DIP	6 Entry Angle S-180° Vertical
7 Plating 1-Gold Plated 3-Selective gold in contact area, tin on tail	8 Thickness of Plating 00-Gold Flash 03-3μ" Custom plate available	9 Color-Resin K6-Black U1-Blue	10 Packaging K-Tray	11 Distinction Type F-F Type	



THIRD ANGLE PROJECTION	GENERAL TOLERANCES (UNLESS SPECIFIED)		APPROVE BY LEO	DATE 02/AUG/23	PART NO. FDB1526-F0DSXXXXXKF	ITEM NO. FDB1526	 Building Technology Cornerstone
	X. ±0.30	X.* ±5°	CHECKED BY GISELLE	DATE 02/AUG/23	TITLE D-SUB Connectors 15 Circuits 180° Vertical Female		
DESIGN UNITS METRIC	X.X ±0.20	X.X* ±2°	DRAWN BY NICK	DATE 02/AUG/23	THIS DRAWING CONTAINS INFORMATION THAT IS PROPRIETARY TO TXGA INDUSTRIAL ELECTRONICS(S.Z)CO.,LTD AND SHOULD NOT BE USED WITHOUT WRITTEN PERMISSION		
SCALE 5:1	SIZE A4	X.XX ±0.15	X.XX* ±1°				
		X.XXX ±0.10	X.XXX* ±0.5°				

1 2 3 4 5 6 7 8

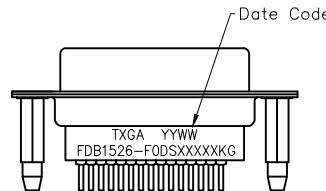
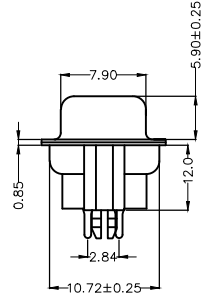
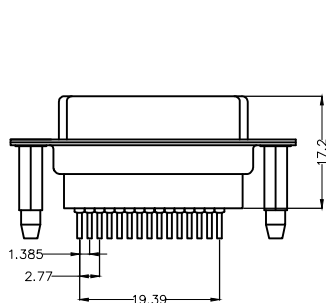
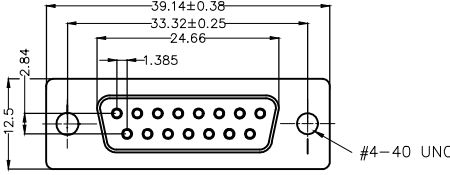
REV	LOCATIONS	DESCRIPTION	DATE	REVISER	APPD

Electrical

Current Rating: 3A AC(rms)/DC
 Voltage Rating: 250V AC(rms)/DC
 Contact Resistance: 25 m Ω Max
 Insulation Resistance: 1000 M Ω MIN
 Withstanding Voltage: 500V AC r.m.s
 Temperature Range—Operating: -55°C~+105°C

Material and Plating

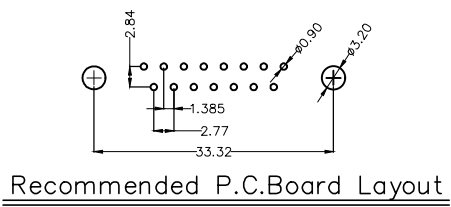
Housing: PBT(UL 94V-0)
 Contact Pin: Phosphor Bronze
 Plating: Gold Plated/Selective gold in contact area,tin on tail
 Screws: Copper alloy/Nickel plated
 Board lock: Copper alloy/Nickel plated



Ordering Information

FDB 15 26 - F0 D S X XX XX K G
 1 2 3 4 5 6 7 8 9 10 11

1	Category FDB-D-SUB Connectors	2	Circuits 15	3	Distinction No. 26	4	Type F0-Female	5	Assembly Layout D-DIP	6	Entry Angle S-180° Vertical
7	Plating 1-Gold Plated 3-Selective gold in contact area, tin on tail	8	Thickness of Plating 00-Gold Flash 03-3μ" Custom plate available	9	Color-Resin K6-Black U1-Blue	10	Packaging K-Tray	11	Distinction Type G-G Type		



<p>THIRD ANGLE PROJECTION</p>	GENERAL TOLERANCES (UNLESS SPECIFIED)		APPROVE BY LEO	DATE 02/AUG/23	PART NO. FDB1526-F0DSXXXXXKG	ITEM NO. FDB1526	<p>Building Technology Cornerstone</p>
	X. ±0.30	X.* ±5*	CHECKED BY GISELLE	DATE 02/AUG/23	TITLE D-SUB Connectors 15 Circuits 180° Vertical Female		
DESIGN UNITS METRIC	X.X ±0.20	X.X* ±2*	DRAWN BY NICK	DATE 02/AUG/23	THIS DRAWING CONTAINS INFORMATION THAT IS PROPRIETARY TO TXGA INDUSTRIAL ELECTRONICS(S.Z)CO.,LTD AND SHOULD NOT BE USED WITHOUT WRITTEN PERMISSION		
SCALE 5:1	SIZE A4	X.XX ±0.15	X.XX* ±1*	X.XXX ±0.10	X.XXX* ±0.5*		