

| REV | LOCATIONS | DESCRIPTION | DATE | REVISER | APPD |
|-----|-----------|------------------|-----------|---------|------|
| 1 | △ | Add marking code | 13/Jan/25 | NICK | LEO |

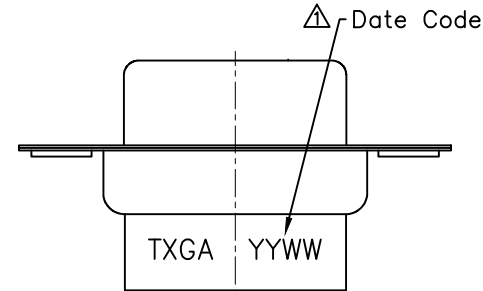
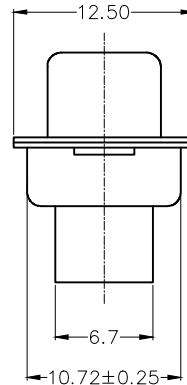
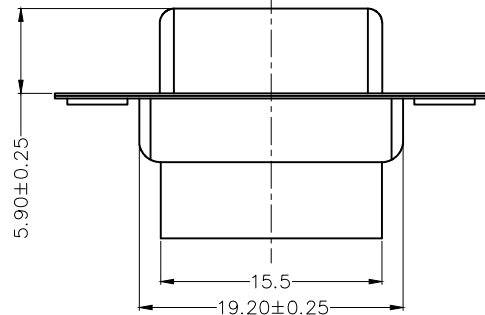
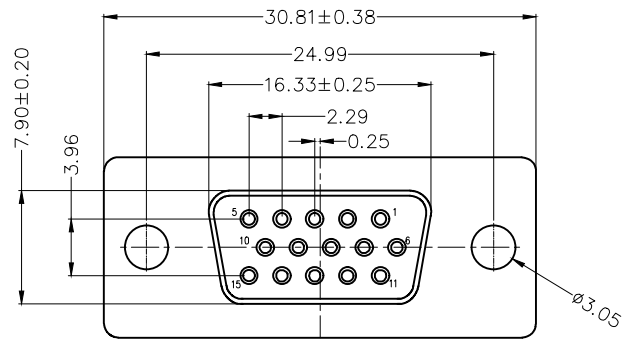
SPECIFICATIONS

Electrical

Current Rating: 3A AC(rms)/DC
Voltage Rating: 250V AC(rms)/DC
Contact Resistance: 30 mΩ Max
Insulation Resistance: 1000 MΩ MIN
Withstanding Voltage: 500V AC r.m.s
Temperature Range—Operating: -55°C~+105°C

Material and Plating

Housing: PBT (UL 94V-0)
Front Shell: Spcc/ Nickel plated
Back Shell: Spcc/ Tin plated



Ordering Information

FDB 15 37 - F0 T S 0 00 XX K A
1 2 3 4 5 6 7 8 9

| | | | | | | | | | |
|---|--------------------------------|---|------------------------------------|---|-----------------------|---|------------------------------|---|------------------------------------|
| 1 | Category FDB- D-SUB | 2 | Circuits 15 | 3 | Distinction No. 37 | 4 | Type F0-Female | 5 | Assembly Layout T-Terminal type |
| 6 | Entry Angle S-180° Vertical | 7 | Color-Resin K6-Black U1-Blue | 8 | Packaging K-Tray | 9 | Distinction Type A-A Type | | |

| | | | | | | | |
|-------------------------------|--|-------------|-------------------|-----------------------|---------------------------------|--|-------------------------------------|
| THIRD ANGLE PROJECTION | GENERAL TOLERANCES (UNLESS SPECIFIED) | | APPROVE BY LEO | DATE 29/JAN/23 | PART NO. FDB1537-FOTS000XXKA | ITEM NO. FDB1537 | Building Technology Cornerstone |
| | DESIGN UNITS METRIC | X. ±0.30 | X.' ±5' | CHECKED BY GISELLE | DATE 29/JAN/23 | TITLE D-SUB Connector 15Circuits Terminal type Female | |
| SCALE 5:1 | SIZE A4 | X.XX ±0.15 | X.XX' ±1' | DRAWN BY FAY | DATE 29/JAN/23 | THIS DRAWING CONTAINS INFORMATION THAT IS PROPRIETARY TO TXGA INDUSTRIAL ELECTRONICS(S.Z)CO.,LTD AND SHOULD NOT BE USED WITHOUT WRITTEN PERMISSION | |
| | | X.XXX ±0.10 | X.XXX' ±0.5' | | | REV 1 | SHEET NO. 1/1 |

| REV | LOCATIONS | DESCRIPTION | DATE | REVISER | APPD |
|-----|-----------|------------------|-----------|---------|------|
| 1 | △ | Add marking code | 13/Jan/25 | NICK | LEO |

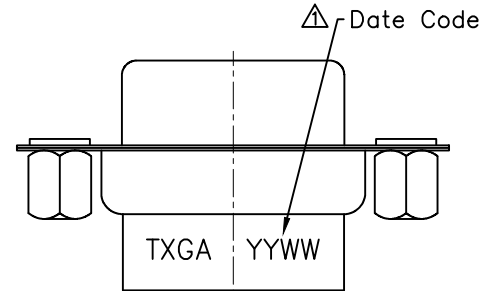
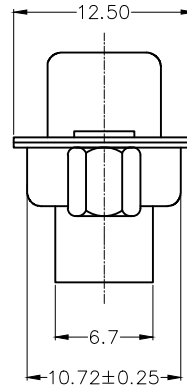
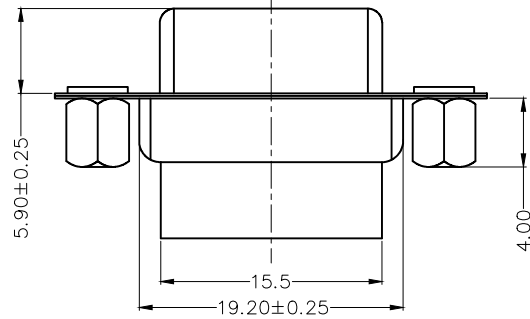
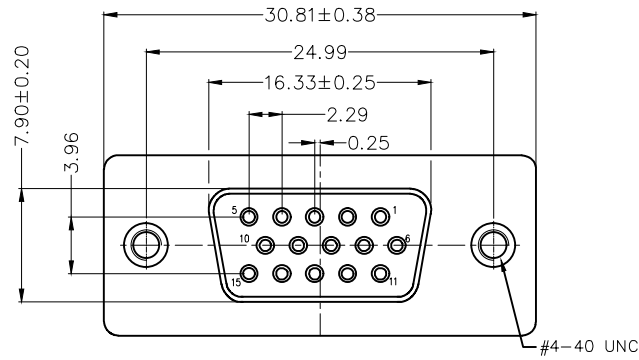
SPECIFICATIONS

Electrical

Current Rating: 3A AC(rms)/DC
Voltage Rating: 250V AC(rms)/DC
Contact Resistance: 30 mΩ Max
Insulation Resistance: 1000 MΩ MIN
Withstanding Voltage: 500V AC r.m.s
Temperature Range—Operating: -55°C~+105°C

Material and Plating

Housing: PBT (UL 94V-0)
Front Shell: Spcc/ Nickel plated
Back Shell: Spcc/ Tin plated
Nut: Copper alloy/ Nickel plated



Ordering Information

FDB 15 37 - F0 T S 0 00 XX K B
1 2 3 4 5 6 7 8 9

| | | | | | | | | | |
|---|--------------------------------|---|------------------------------------|---|-----------------------|---|------------------------------|---|------------------------------------|
| 1 | Category FDB- D-SUB | 2 | Circuits 15 | 3 | Distinction No. 37 | 4 | Type F0-Female | 5 | Assembly Layout T-Terminal type |
| 6 | Entry Angle S-180° Vertical | 7 | Color-Resin K6-Black U1-Blue | 8 | Packaging K-Tray | 9 | Distinction Type B-B Type | | |

| | | | | | | | | |
|-------------------------------|---------------------------------------|------------|-----------------------|-------------------|---|--|--|-------|
| <p>THIRD ANGLE PROJECTION</p> | GENERAL TOLERANCES (UNLESS SPECIFIED) | | APPROVE BY LEO | DATE 29/JAN/23 | PART NO. FDB1537-FOTS000XXKB | ITEM NO. FDB1537 | <p>Building Technology Cornerstone</p> | |
| | X. ±0.30 | X.' ±5' | CHECKED BY GISELLE | DATE 29/JAN/23 | TITLE D-SUB Connector 15Circuits Terminal type Female | | | REV 1 |
| | DESIGN UNITS METRIC | X.X ±0.20 | X.X' ±2' | DRAWN BY FAY | DATE 29/JAN/23 | THIS DRAWING CONTAINS INFORMATION THAT IS PROPRIETARY TO TXGA INDUSTRIAL ELECTRONICS(S.Z)CO.,LTD AND SHOULD NOT BE USED WITHOUT WRITTEN PERMISSION | | |
| | SCALE 5:1 | SIZE A4 | X.XX ±0.15 | X.XX' ±1' | X.XXX ±0.10 | X.XXX' ±0.5' | | |

| REV | LOCATIONS | DESCRIPTION | DATE | REVISER | APPD |
|-----|-----------|------------------|-----------|---------|------|
| 1 | △ | Add marking code | 13/Jan/25 | NICK | LEO |

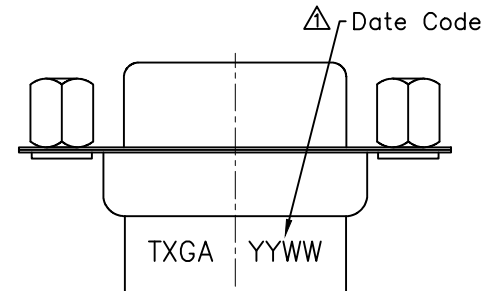
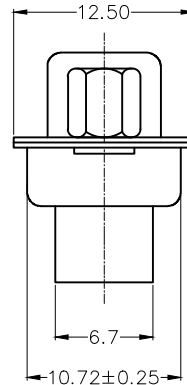
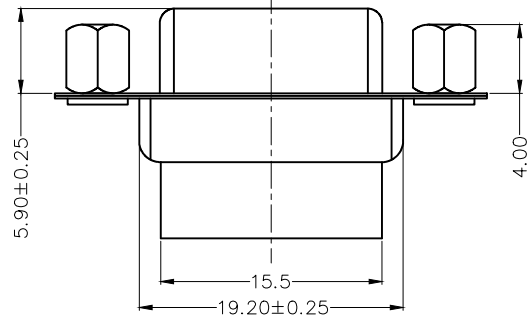
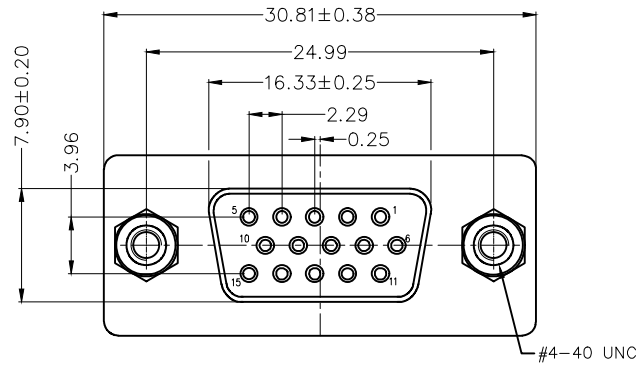
SPECIFICATIONS

Electrical

Current Rating: 3A AC(rms)/DC
Voltage Rating: 250V AC(rms)/DC
Contact Resistance: 30 mΩ Max
Insulation Resistance: 1000 MΩ MIN
Withstanding Voltage: 500V AC r.m.s
Temperature Range—Operating: -55°C~+105°C

Material and Plating

Housing: PBT (UL 94V-0)
Front Shell: Spcc/ Nickel plated
Back Shell: Spcc/ Tin plated
Nut: Copper alloy/ Nickel plated



Ordering Information

FDB 15 37 — F0 T S 0 00 XX K C
1 2 3 4 5 6 7 8 9

| | | | | | | | | | |
|---|--------------------------------|---|------------------------------------|---|-----------------------|---|------------------------------|---|------------------------------------|
| 1 | Category FDB- D-SUB | 2 | Circuits 15 | 3 | Distinction No. 37 | 4 | Type F0-Female | 5 | Assembly Layout T-Terminal type |
| 6 | Entry Angle S-180° Vertical | 7 | Color-Resin K6-Black U1-Blue | 8 | Packaging K-Tray | 9 | Distinction Type C-C Type | | |

| | | | | | | | |
|-------------------------------|--|-------------|-------------------|-----------------------|---------------------------------|--|-------------------------------------|
| THIRD ANGLE PROJECTION | GENERAL TOLERANCES (UNLESS SPECIFIED) | | APPROVE BY LEO | DATE 29/JAN/23 | PART NO. FDB1537-FOTS000XXKC | ITEM NO. FDB1537 | Building Technology Cornerstone |
| | DESIGN UNITS METRIC | X. ±0.30 | X.' ±5' | CHECKED BY GISELLE | DATE 29/JAN/23 | TITLE D-SUB Connector 15Circuits Terminal type Female | |
| SCALE 5:1 | SIZE A4 | X.XX ±0.15 | X.XX' ±1' | DRAWN BY FAY | DATE 29/JAN/23 | THIS DRAWING CONTAINS INFORMATION THAT IS PROPRIETARY TO TXGA INDUSTRIAL ELECTRONICS(S.Z)CO.,LTD AND SHOULD NOT BE USED WITHOUT WRITTEN PERMISSION | |
| | | X.XXX ±0.10 | X.XXX' ±0.5' | | | REV 1 | SHEET NO. 1/1 |