

REV	LOCATIONS	DESCRIPTION	DATE	REVISER	APPD
1	△	Add marking code	13/Jan/25	NICK	LEO

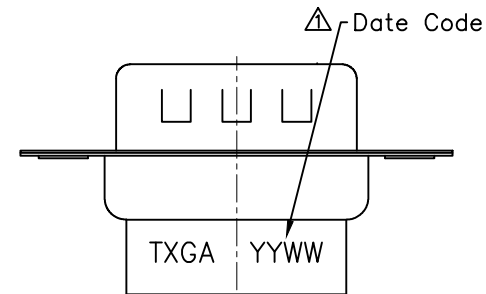
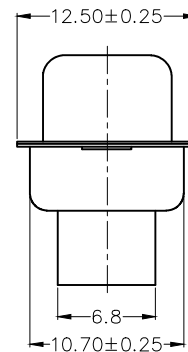
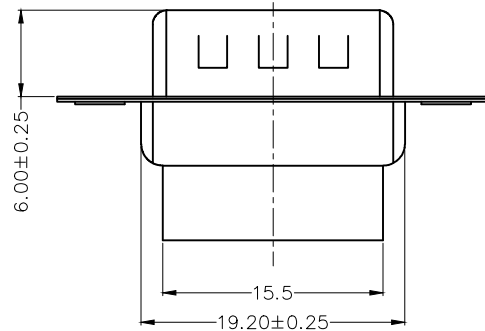
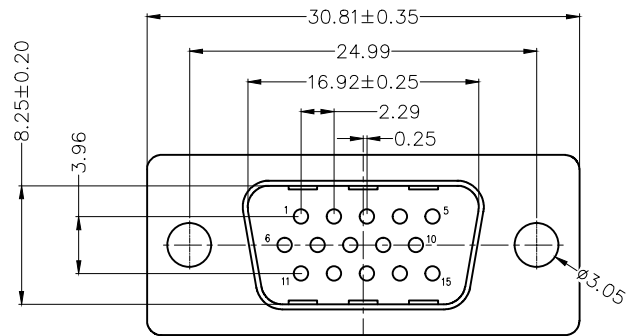
SPECIFICATIONS

Electrical

Current Rating: 3A AC(rms)/DC
Voltage Rating: 250V AC(rms)/DC
Contact Resistance: 30 mΩ Max
Insulation Resistance: 1000 MΩ MIN
Withstanding Voltage: 500V AC r.m.s
Temperature Range—Operating: -55°C~+105°C

Material and Plating

Housing: PBT (UL 94V-0)
Front Shell: Spcc/ Nickel plated
Back Shell: Spcc/ Tin plated



Ordering Information

FDB 15 37 - M0 T S 0 00 XX K A
1 2 3 4 5 6 7 8 9

1	Category FDB- D-SUB	2	Circuits 15	3	Distinction No. 37	4	Type M0-Male	5	Assembly Layout T-Terminal type
6	Entry Angle S-180° Vertical	7	Color-Resin K6-Black U1-Blue	8	Packaging K-Tray	9	Distinction Type A-A Type		

 THIRD ANGLE PROJECTION	GENERAL TOLERANCES (UNLESS SPECIFIED)		APPROVE BY LEO	DATE 29/JAN/23	PART NO. FDB1537-MOTS000XXKA	ITEM NO. FDB1537	 Building Technology Cornerstone
	DESIGN UNITS METRIC	X. ±0.30	X.' ±5'	CHECKED BY GISELLE	DATE 29/JAN/23	TITLE D-SUB Connector 15Circuits Terminal type Male	
SCALE 5:1	SIZE A4	X.XX ±0.15	X.XX' ±1'	DRAWN BY FAY	DATE 29/JAN/23	THIS DRAWING CONTAINS INFORMATION THAT IS PROPRIETARY TO TXGA INDUSTRIAL ELECTRONICS(S.Z)CO.,LTD AND SHOULD NOT BE USED WITHOUT WRITTEN PERMISSION	
		X.XXX ±0.10	X.XXX' ±0.5'			REV 1	SHEET NO. 1/1

REV	LOCATIONS	DESCRIPTION	DATE	REVISER	APPD
1		Add marking code	13/Jan/25	NICK	LEO

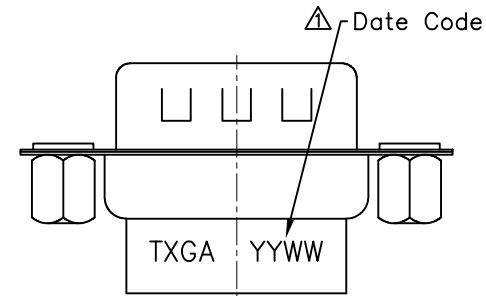
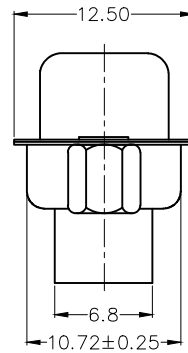
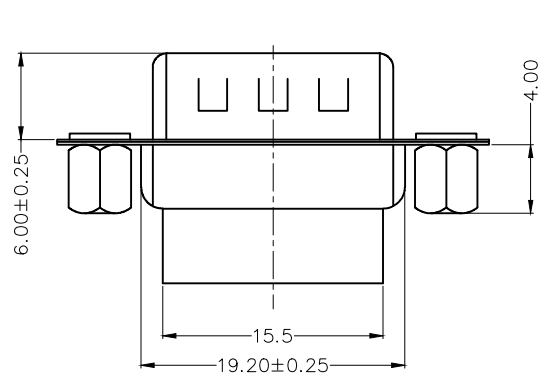
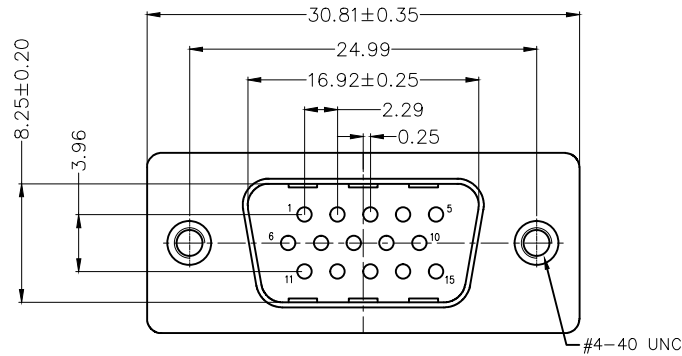
SPECIFICATIONS

Electrical

Current Rating: 3A AC(rms)/DC
Voltage Rating: 250V AC(rms)/DC
Contact Resistance: 30 mΩ Max
Insulation Resistance: 1000 MΩ MIN
Withstanding Voltage: 500V AC r.m.s
Temperature Range—Operating: -55°C~+105°C

Material and Plating

Housing: PBT (UL 94V-0)
Front Shell: Spcc/ Nickel plated
Back Shell: Spcc/ Tin plated
Nut: Copper alloy/ Nickel plated



Ordering Information

FDB 15 37 — M0 T S 0 00 XX K B
1 2 3 4 5 6 7 8 9

1	Category FDB- D-SUB	2	Circuits 15	3	Distinction No. 37	4	Type M0—Male	5	Assembly Layout T—Terminal type
6	Entry Angle S—180° Vertical	7	Color—Resin K6—Black U1—Blue	8	Packaging K—Tray	9	Distinction Type B—B Type		

 THIRD ANGLE PROJECTION	GENERAL TOLERANCES (UNLESS SPECIFIED)		APPROVE BY LEO	DATE 29/JAN/23	PART NO. FDB1537—MOTS000XXKB	ITEM NO. FDB1537	 Building Technology Cornerstone
	DESIGN UNITS METRIC	X. ±0.30	X.' ±5'	CHECKED BY GISELLE	DATE 29/JAN/23	TITLE D-SUB Connector 15Circuits Terminal type Male	
SCALE 5:1	SIZE A4	X.XX ±0.15	X.XX' ±1'	DRAWN BY FAY	DATE 29/JAN/23	THIS DRAWING CONTAINS INFORMATION THAT IS PROPRIETARY TO TXGA INDUSTRIAL ELECTRONICS(S.Z)CO.,LTD AND SHOULD NOT BE USED WITHOUT WRITTEN PERMISSION	
		X.XXX ±0.10	X.XXX' ±0.5'			REV 1	SHEET NO. 1/1

REV	LOCATIONS	DESCRIPTION	DATE	REVISER	APPD
1	△	Add marking code	13/Jan/25	NICK	LEO

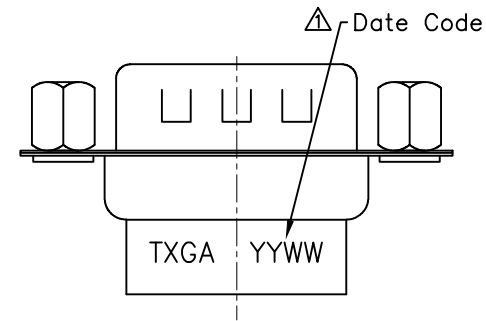
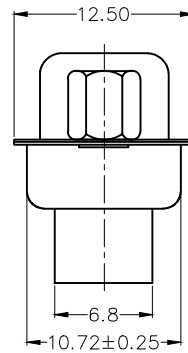
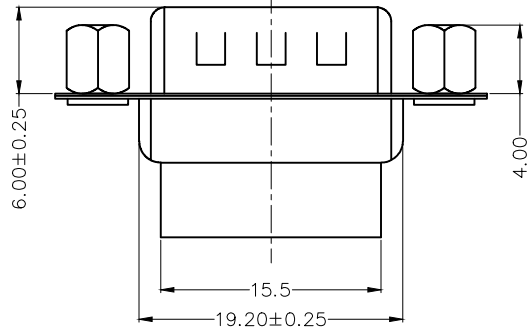
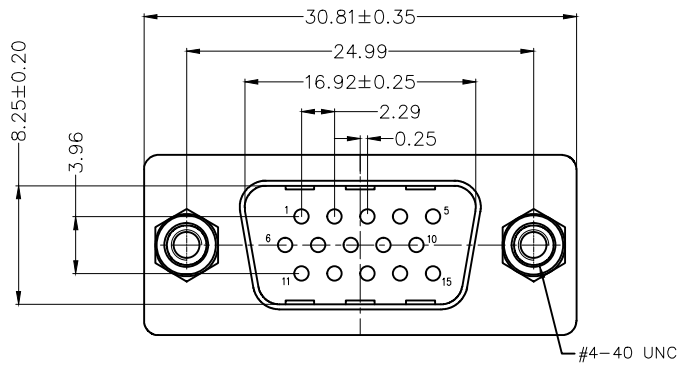
SPECIFICATIONS

Electrical

Current Rating: 3A AC(rms)/DC
Voltage Rating: 250V AC(rms)/DC
Contact Resistance: 30 mΩ Max
Insulation Resistance: 1000 MΩ MIN
Withstanding Voltage: 500V AC r.m.s
Temperature Range—Operating: -55°C~+105°C

Material and Plating

Housing: PBT (UL 94V-0)
Front Shell: Spcc/ Nickel plated
Back Shell: Spcc/ Tin plated
Nut: Copper alloy/ Nickel plated



Ordering Information

FDB 15 37 - M0 T S 0 00 XX K C
1 2 3 4 5 6 7 8 9

1	Category FDB- D-SUB	2	Circuits 15	3	Distinction No. 37	4	Type M0-Male	5	Assembly Layout T-Terminal type
6	Entry Angle S-180° Vertical	7	Color-Resin K6-Black U1-Blue	8	Packaging K-Tray	9	Distinction Type C-C Type		

 THIRD ANGLE PROJECTION	GENERAL TOLERANCES (UNLESS SPECIFIED)		APPROVE BY LEO	DATE 29/JAN/23	PART NO. FDB1537-MOTS000XXKC	ITEM NO. FDB1537	 Building Technology Cornerstone
	DESIGN UNITS METRIC	X. ±0.30	X.' ±5'	CHECKED BY GISELLE	DATE 29/JAN/23	TITLE D-SUB Connector 15Circuits Terminal type Male	
SCALE 5:1	SIZE A4	X.XX ±0.15	X.XX' ±1'	DRAWN BY FAY	DATE 29/JAN/23	THIS DRAWING CONTAINS INFORMATION THAT IS PROPRIETARY TO TXGA INDUSTRIAL ELECTRONICS(S.Z)CO.,LTD AND SHOULD NOT BE USED WITHOUT WRITTEN PERMISSION	
		X.XXX ±0.10	X.XXX' ±0.5'			REV 1	SHEET NO. 1/1