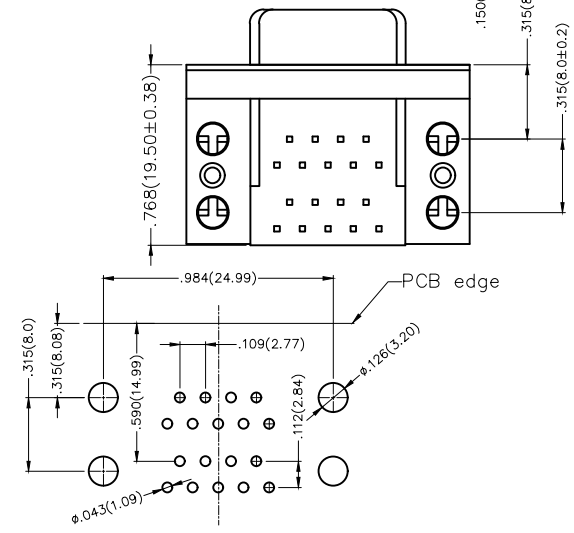
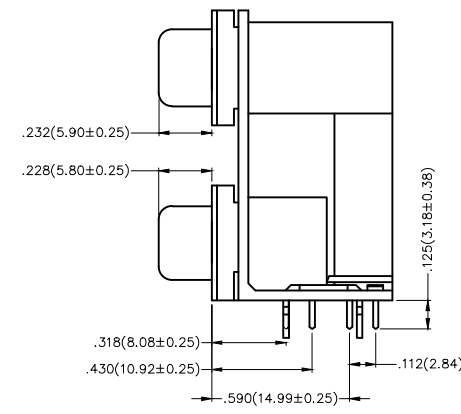
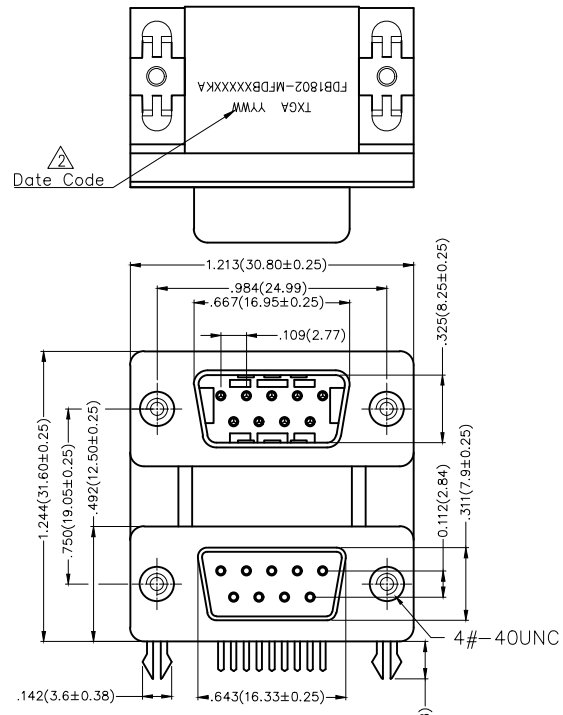


REV	LOCATIONS	DESCRIPTION	DATE	REVISER	APPD
1		New version	14/NOV/23	MATT	LEO
2	⚠	Add marking code	13/Jan/25	NICK	LEO

SPECIFICATIONS

Electrical
 Current Rating: 3A AC(rms)/DC
 Voltage Rating: 250V AC(rms)/DC
 Contact Resistance: 25 MΩ Max
 Insulation Resistance: 1000 MΩ MIN
 Withstanding Voltage: 500V AC r.m.s
 Operating Temperature: -55°C~+105°C

Material and Plating
 Housing: PBT 30%G.F UL 94V-0
 Contact: Copper Alloy/Gold plated/Selective gold on contact area, tin on tail
 Shell: Spcc/Nickel Plated Over All
 Board Lock: Copper Alloy/Tin Plated Over All
 Screws: Copper Alloy/Nickel Plated Over All



Recommended P.C.Board Layout

Ordering Information

FDB 18 02 — MF D B X XX XX K A
 1 2 3 4 5 6 7 8 9 10 11

1 Category FDB-D-SUB Connector	2 Circuits 18-18Circuits	3 Distinction No. 02	4 Type MF-Male+Female	5 Assembly Layout D-DIP	6 Entry Angle B-90° Angle
7 Plating 1-Gold Plated 3-Selective gold in contact area, tin on tail	8 Thickness of Plating 00-Gold Flash 03-3μ" Custom plate available	9 Color-Resin K6-Black U1-Blue	10 Packaging K-Tray	11 Distinction Type A-Type A	

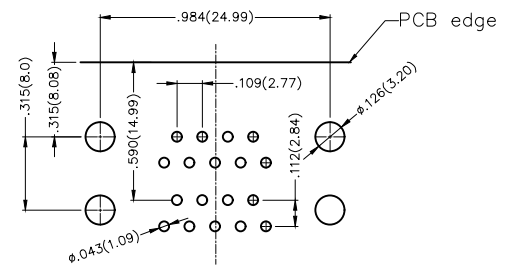
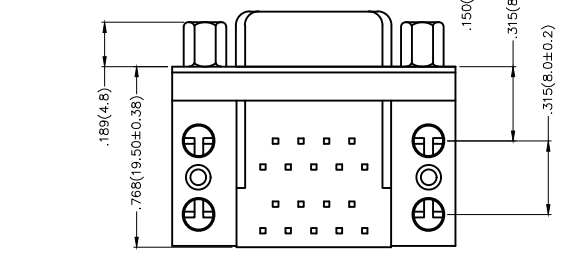
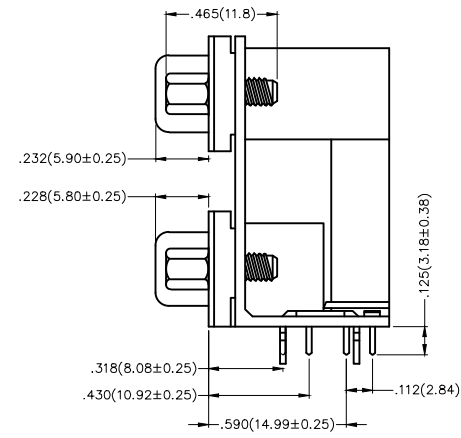
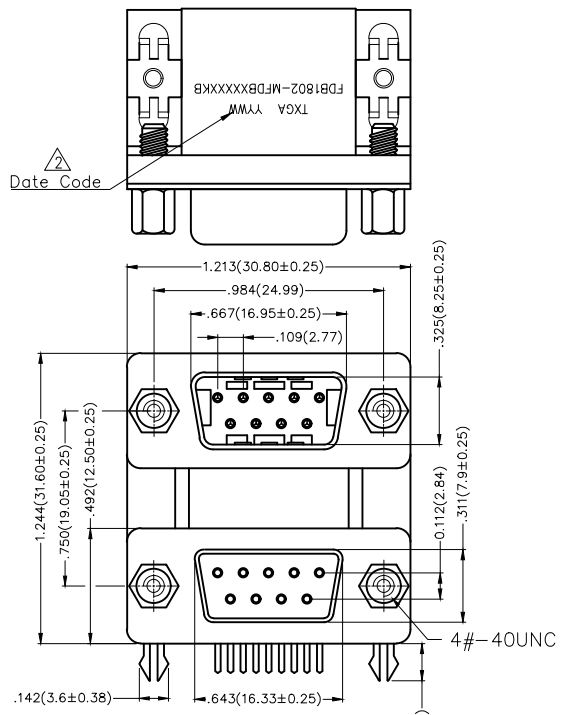
THIRD ANGLE PROJECTION	GENERAL TOLERANCES (UNLESS SPECIFIED)		APPROVE BY FRANK	DATE 28/JUN/13	PART NO. FDB1802-MFDBXXXXXKA	ITEM NO. FDB1802	 Building Technology Cornerstone	
	DESIGN UNITS Inch (metric)	X.±.022(0.30) X.X±.008(0.20) X.XX±.006(0.15) X.XXX±.004(0.10)	X'.±5' .X'±2' .XX'±1' .XXX'±0.5'	CHECKED BY JACOB	DATE 28/JUN/13	TITLE D-SUB Connectors 18Circuits 90° Angle Male		REV 2
SCALE 5:1	SIZE A4		DRAWN BY CHERRY	DATE 28/JUN/13	THIS DRAWING CONTAINS INFORMATION THAT IS PROPRIETARY TO TXGA INDUSTRIAL ELECTRONICS(S.Z)CO.,LTD AND SHOULD NOT BE USED WITHOUT WRITTEN PERMISSION			

REV	LOCATIONS	DESCRIPTION	DATE	REVISER	APPD
1		New version	14/NOV/23	MATT	LEO
2	⚠	Add marking code	13/Jan/25	NICK	LEO

SPECIFICATIONS

Electrical
 Current Rating: 3A AC(rms)/DC
 Voltage Rating: 250V AC(rms)/DC
 Contact Resistance: 25 MΩ Max
 Insulation Resistance: 1000 MΩ MIN
 Withstanding Voltage: 500V AC r.m.s
 Operating Temperature: -55°C~+105°C

Material and Plating
 Housing: PBT 30%G.F UL 94V-0
 Contact: Copper Alloy/Gold plated/Selective gold on contact area, tin on tail
 Shell: Spcc/Nickel Plated Over All
 Board Lock: Copper Alloy/Tin Plated Over All
 Screws: Copper Alloy/Nickel Plated Over All



Recommended P.C.Board Layout

Ordering Information

FDB 18 02 — MF D B X XX XX K B
 1 2 3 4 5 6 7 8 9 10 11

1 Category FDB-D-SUB Connector	2 Circuits 18-18Circuits	3 Distinction No. 02	4 Type MF-Male+Female	5 Assembly Layout D-DIP	6 Entry Angle B-90° Angle
7 Plating 1-Gold Plated 3-Selective gold in contact area, tin on tail	8 Thickness of Plating 00-Gold Flash 03-3μ" Custom plate available	9 Color-Resin K6-Black U1-Blue	10 Packaging K-Tray	11 Distinction Type B-Type B	

THIRD ANGLE PROJECTION	GENERAL TOLERANCES (UNLESS SPECIFIED)		APPROVE BY FRANK	DATE 28/JUN/13	PART NO. FDB1802-MFDBXXXXXB	ITEM NO. FDB1802	 Building Technology Cornerstone
	DESIGN UNITS Inch (metric)	X.±.022(0.30) X.X±.008(0.20) X.XX±.006(0.15) X.XXX±.004(0.10)	X'.±5' X'±2' .XX'±1" .XXX'±0.5'	CHECKED BY JACOB	DATE 28/JUN/13	TITLE D-SUB Connectors 18Circuits 90° Angle Male	
SCALE 5:1	SIZE A4		DRAWN BY CHERRY	DATE 28/JUN/13	THIS DRAWING CONTAINS INFORMATION THAT IS PROPRIETARY TO TXGA INDUSTRIAL ELECTRONICS(S.Z)CO.,LTD AND SHOULD NOT BE USED WITHOUT WRITTEN PERMISSION		REV 2 SHEET NO. 1/1

REV	LOCATIONS	DESCRIPTION	DATE	REVISER	APPD
1		New version	14/NOV/23	MATT	LEO
2		Add marking code	13/Jan/25	NICK	LEO

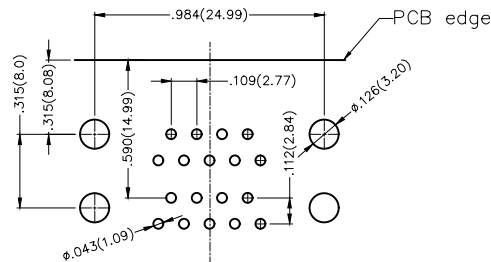
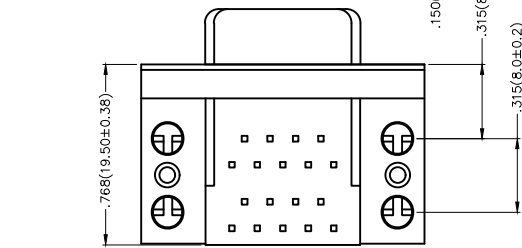
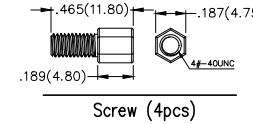
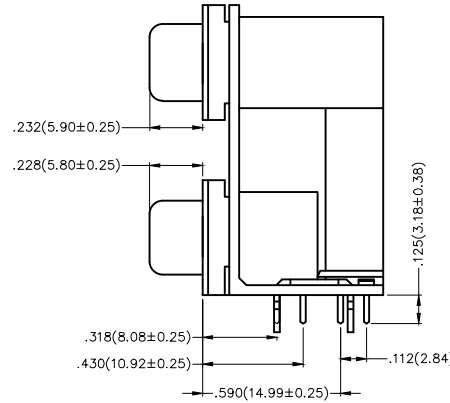
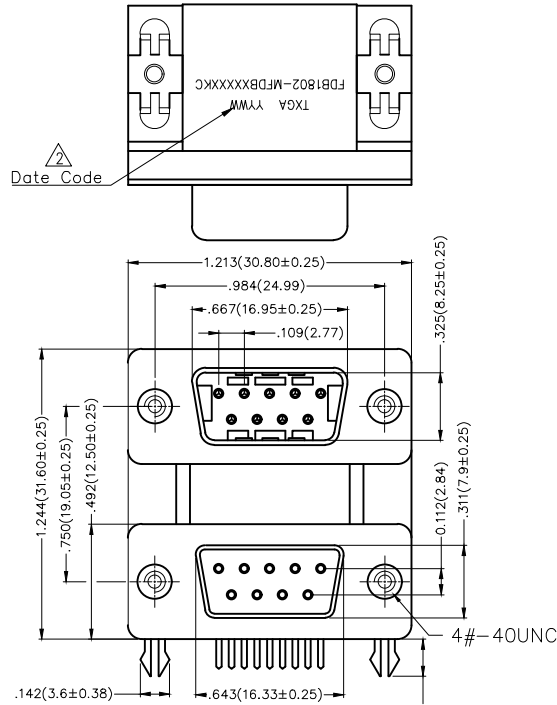
SPECIFICATIONS

Electrical

Current Rating: 3A AC(rms)/DC
Voltage Rating: 250V AC(rms)/DC
Contact Resistance: 25 MΩ Max
Insulation Resistance: 1000 MΩ MIN
Withstanding Voltage: 500V AC r.m.s
Operating Temperature: -55°C~+105°C

Material and Plating

Housing: PBT 30%G.F UL 94V-0
Contact: Copper Alloy/Gold plated/Selective gold on contact area, tin on tail
Shell: Spcc/Nickel Plated Over All
Board Lock: Copper Alloy/Tin Plated Over All
Screws: Copper Alloy/Nickel Plated Over All



Recommended P.C.Board Layout

Ordering Information

FDB 18 02 — MF D B X XX XX K C
1 2 3 4 5 6 7 8 9 10 11

1 Category FDB-D-SUB Connector	2 Circuits 18-18Circuits	3 Distinction No. 02	4 Type MF-Male+Female	5 Assembly Layout D-DIP	6 Entry Angle B-90° Angle
7 Plating 1-Gold Plated 3-Selective gold in contact area, tin on tail	8 Thickness of Plating 00-Gold Flash 03-3μ" Custom plate available	9 Color-Resin K6-Black U1-Blue	10 Packaging K-Tray	11 Distinction Type C-Type C	

	GENERAL TOLERANCES (UNLESS SPECIFIED)		APPROVE BY FRANK	DATE 28/JUN/13	PART NO. FDB1802-MFDBXXXXXXKC	ITEM NO. FDB1802	 Building Technology Cornerstone
	DESIGN UNITS Inch (metric)	X.±.022(0.30) X.X±.008(0.20) X.XX±.006(0.15) X.XXX±.004(0.10)	X'.±5' X'±2' .XX'±1" .XXX'±0.5'	CHECKED BY JACOB	DATE 28/JUN/13	TITLE D-SUB Connectors 18Circuits 90° Angle Male	
SCALE 5:1	SIZE A4		DRAWN BY CHERRY	DATE 28/JUN/13	THIS DRAWING CONTAINS INFORMATION THAT IS PROPRIETARY TO TXGA INDUSTRIAL ELECTRONICS(S.Z)CO.,LTD AND SHOULD NOT BE USED WITHOUT WRITTEN PERMISSION		REV 2 SHEET NO. 1/1

REV	LOCATIONS	DESCRIPTION	DATE	REVISER	APPD
1		New version	14/NOV/23	MATT	LEO
2	⚠	Add marking code	13/Jan/25	NICK	LEO

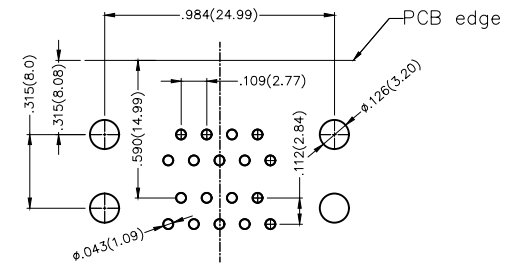
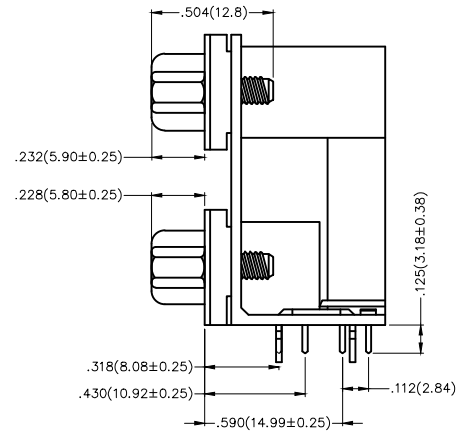
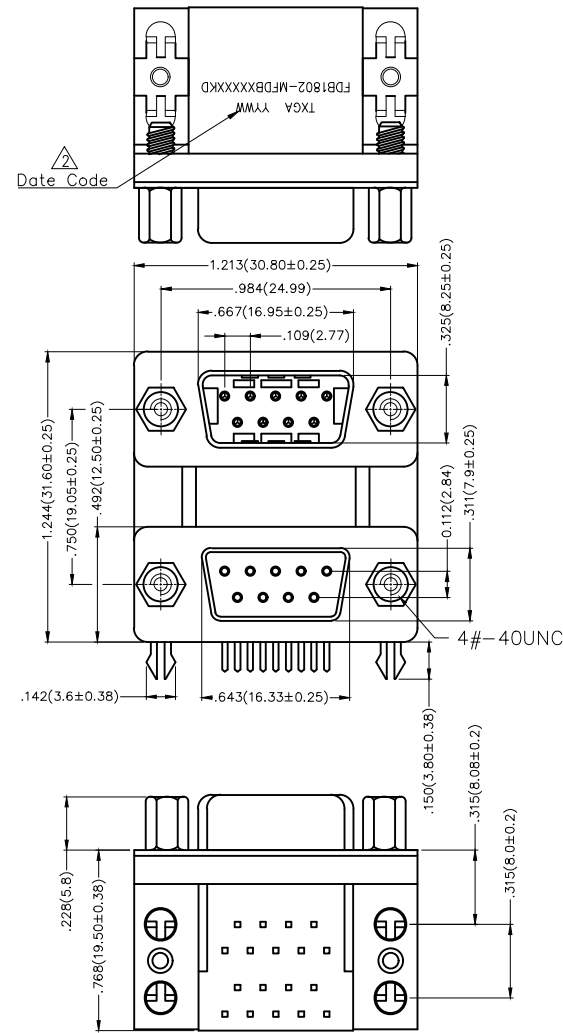
SPECIFICATIONS

Electrical

Current Rating: 3A AC(rms)/DC
Voltage Rating: 250V AC(rms)/DC
Contact Resistance: 25 MΩ Max
Insulation Resistance: 1000 MΩ MIN
Withstanding Voltage: 500V AC r.m.s
Operating Temperature: -55°C~+105°C

Material and Plating

Housing: PBT 30%G.F UL 94V-0
Contact: Copper Alloy/Gold plated/Selective gold on contact area, tin on tail
Shell: Spcc/Nickel Plated Over All
Board Lock: Copper Alloy/Tin Plated Over All
Screws: Copper Alloy/Nickel Plated Over All



Recommended P.C.Board Layout

Ordering Information

FDB 18 02 — MF D B X XX XX K D
1 2 3 4 5 6 7 8 9 10 11

1 Category FDB-D-SUB Connector	2 Circuits 18-18Circuits	3 Distinction No. 02	4 Type MF-Male+Female	5 Assembly Layout D-DIP	6 Entry Angle B-90° Angle
7 Plating 1-Gold Plated 3-Selective gold in contact area, tin on tail	8 Thickness of Plating 00-Gold Flash 03-3μ" Custom plate available	9 Color-Resin K6-Black U1-Blue	10 Packaging K-Tray	11 Distinction Type D-Type D	

THIRD ANGLE PROJECTION	GENERAL TOLERANCES (UNLESS SPECIFIED)		APPROVE BY FRANK	DATE 28/JUN/13	PART NO. FDB1802-MFDBXXXXXKD	ITEM NO. FDB1802	 Building Technology Cornerstone
	DESIGN UNITS Inch (metric)	X.±.022(0.30) X.X±.008(0.20) X.XX±.006(0.15) X.XXX±.004(0.10)	X'.±5' X'X±2' .XX±1" .XXX±0.5"	CHECKED BY JACOB	DATE 28/JUN/13	TITLE D-SUB Connectors 18Circuits 90° Angle Male	
SCALE 5:1	SIZE A4		DRAWN BY CHERRY	DATE 28/JUN/13	THIS DRAWING CONTAINS INFORMATION THAT IS PROPRIETARY TO TXGA INDUSTRIAL ELECTRONICS(S.Z)CO.,LTD AND SHOULD NOT BE USED WITHOUT WRITTEN PERMISSION		REV 2 SHEET NO. 1/1