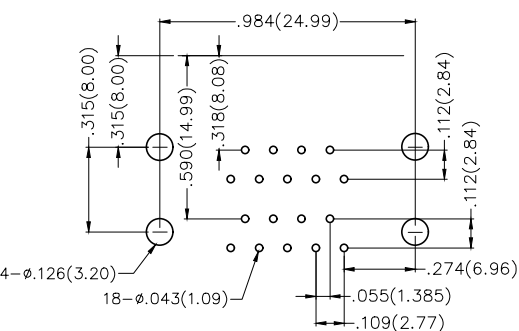
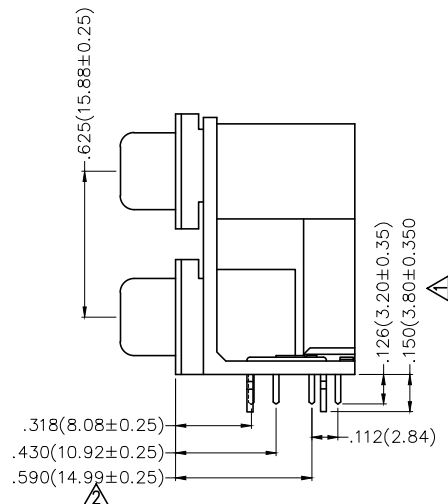
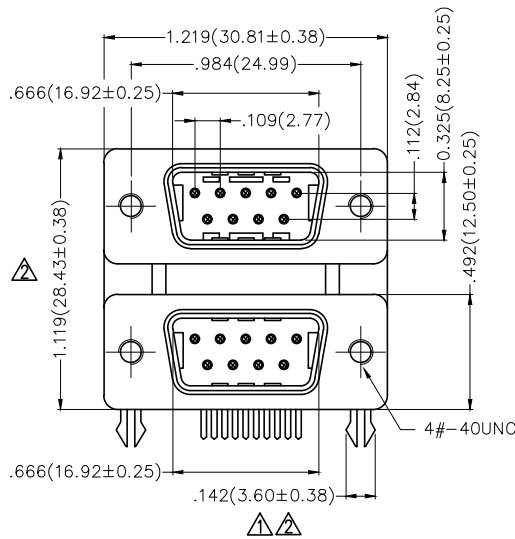
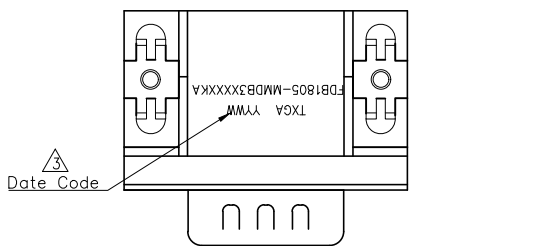


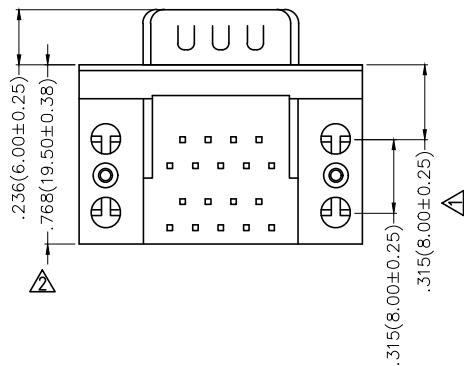
1 2 3 4 5 6 7 8

REV	LOCATIONS	DESCRIPTION	DATE	REVISER	APPD
1		Size changes	26/SEP/21	KATE	CHERRY
2		Size changes	30/AUG/22	MATT	CHERRY
3		Add marking code	13/Jan/25	NICK	LEO

A
B
C
D
E
F



Recommended P.C.Board Layout



SPECIFICATIONS

Electrical

Current Rating: 3A AC(rms)/DC
 Voltage Rating: 250V AC(rms)/DC
 Contact Resistance: 25 mΩ Max
 Insulation Resistance: 1000 MΩ Min
 Withstanding Voltage: 500V AC r.m.s
 Temperature Range—Operating: -55°C~+105°C

Material and Plating

Housing: PBT (UL 94V-0)
 Contact: Copper Alloy/ Selective gold on contact area, tin on tail
 Shell: Spcc/ Nickel Plated
 Board Lock: Copper Alloy/ Tin Plated

Ordering Information

FDB 18 05 — MM D B 3 XX XX K A
 1 2 3 4 5 6 7 8 9 10 11

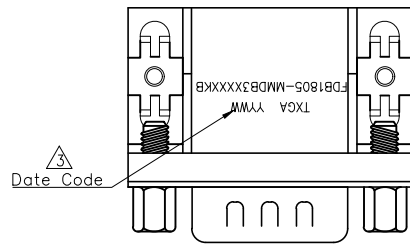
1 Category FDB-D-SUB Connector	2 Circuits 18-18Circuits	3 Distinction No. 05	4 Type MM-Male+Male	5 Assembly Layout D-DIP	6 Entry Angle B-90° Angle
7 Plating 3-Selective gold on contact area, tin on tail	8 Thickness of Plating 00-Gold Flash 03-3μ" Custom plate available	9 Color-Resin K6-Black U1-Blue	10 Packaging K-Tray	11 Distinction Type A-Type A	

 THIRD ANGLE PROJECTION	GENERAL TOLERANCES (UNLESS SPECIFIED)		APPROVE BY FRANK	DATE 28/JUN/13	PART NO. FDB1805-MMDB3XXXXKA	ITEM NO. FDB1805	 Leader Of Industry
	DESIGN UNITS Inch (metric)	X.±.012(0.30)	X.'±5'	CHECKED BY JACOB	DATE 28/JUN/13	TITLE D-SUB Connectors 18Circuits 90° Angle Male+Male	
SCALE 5:1	SIZE A4	X.XX±.006(0.15)	.XX'±1"	DRAWN BY CHERRY	DATE 28/JUN/13	THIS DRAWING CONTAINS INFORMATION THAT IS PROPRIETARY TO TXGA INDUSTRIAL ELECTRONICS(S.Z)CO.,LTD AND SHOULD NOT BE USED WITHOUT WRITTEN PERMISSION	
		X.XXX±.004(0.10)	.XXX'±0.5'			REV 3	SHEET NO. 1/1

1 2 3 4 5 6 7 8

1 2 3 4 5 6 7 8

REV	LOCATIONS	DESCRIPTION	DATE	REVISER	APPD
1		Size changes	26/SEP/21	KATE	CHERRY
2		Size changes	30/AUG/22	MATT	CHERRY
3		Add marking code	13/Jan/25	NICK	LEO



SPECIFICATIONS

Electrical

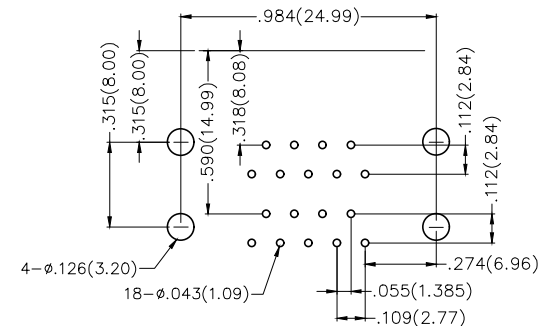
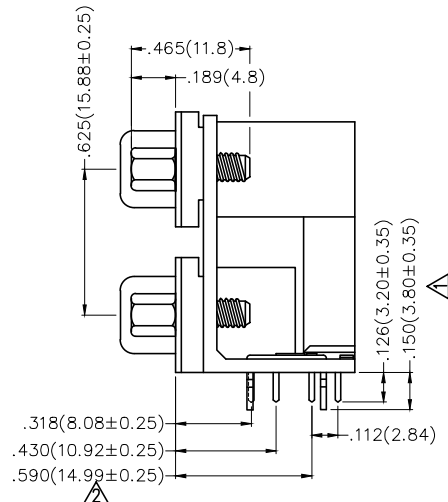
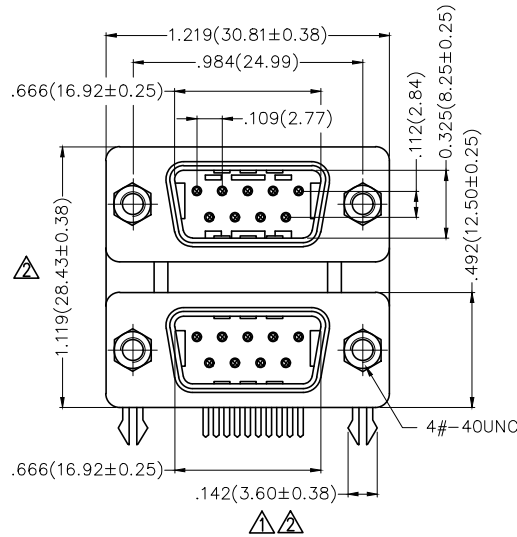
Current Rating: 3A AC(rms)/DC
 Voltage Rating: 250V AC(rms)/DC
 Contact Resistance: 25 mΩ Max
 Insulation Resistance: 1000 MΩ Min
 Withstanding Voltage: 500V AC r.m.s
 Temperature Range-Operating: -55°C~+105°C

Material and Plating

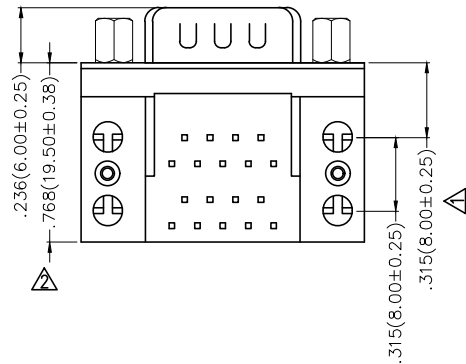
Housing: PBT (UL 94V-0)
 Contact: Copper Alloy/ Selective gold on contact area, tin on tail
 Shell: Spcc/ Nickel Plated
 Board Lock: Copper Alloy/ Tin Plated
 Screws: Copper Alloy/ Nickel Plated

A
B
C
D
E
F

A
B
C
D
E
F



Recommended P.C.Board Layout



Ordering Information

FDB 18 05 — MM D B 3 XX XX K B
 1 2 3 4 5 6 7 8 9 10 11

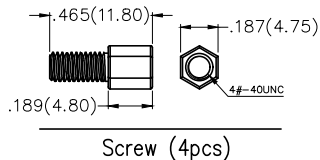
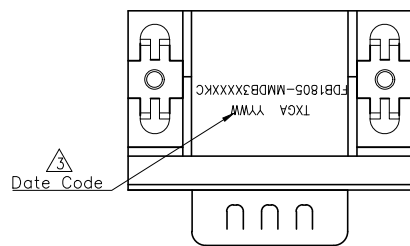
1 Category FDB-D-SUB Connector	2 Circuits 18-18Circuits	3 Distinction No. 05	4 Type MM-Male+Male	5 Assembly Layout D-DIP	6 Entry Angle B-90° Angle
7 Plating 3-Selective gold on contact area, tin on tail	8 Thickness of Plating 00-Gold Flash 03-3μ" Custom plate available	9 Color-Resin K6-Black U1-Blue	10 Packaging K-Tray	11 Distinction Type B-Type B	

 THIRD ANGLE PROJECTION	GENERAL TOLERANCES (UNLESS SPECIFIED) X.±.012(0.30) X.'±5' X.X±.008(0.20) X.'±2' X.XX±.006(0.15) .XX'±1" X.XXX±.004(0.10) .XXX'±0.5'		APPROVE BY FRANK DATE 28/JUN/13	PART NO. FDB1805-MMDB3XXXXKB	ITEM NO. FDB1805	 TXGA Leader Of Industry
	DESIGN UNITS Inch (metric)	CHECKED BY JACOB DATE 28/JUN/13	DRAWN BY CHERRY DATE 28/JUN/13	TITLE D-SUB Connectors 18Circuits 90° Angle Male+Male		
SCALE 5:1	SIZE A4	THIS DRAWING CONTAINS INFORMATION THAT IS PROPRIETARY TO TXGA INDUSTRIAL ELECTRONICS(S.Z)CO.,LTD AND SHOULD NOT BE USED WITHOUT WRITTEN PERMISSION				

1 2 3 4 5 6 7 8

1 2 3 4 5 6 7 8

REV	LOCATIONS	DESCRIPTION	DATE	REVISER	APPD
1		Size changes	26/SEP/21	KATE	CHERRY
2		Size changes	30/AUG/22	MATT	CHERRY
3		Add marking code	13/Jan/25	NICK	LEO



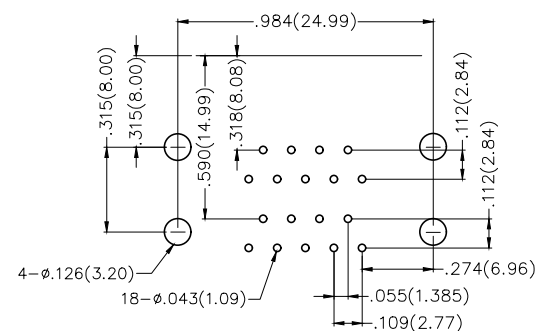
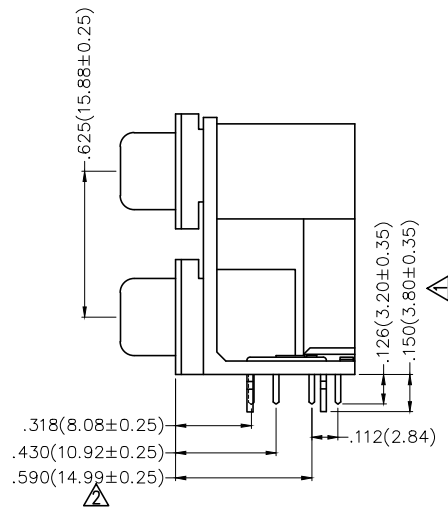
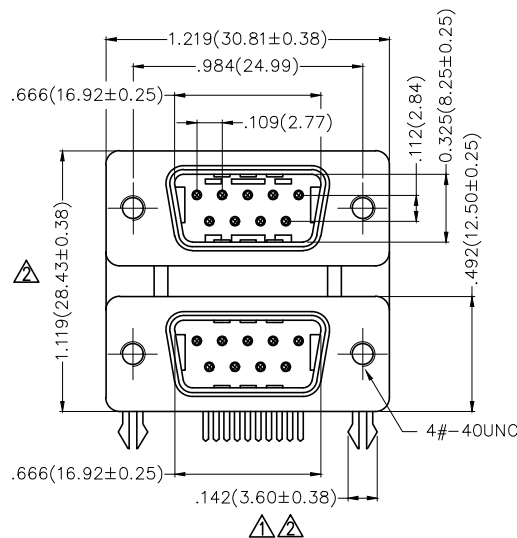
SPECIFICATIONS

Electrical

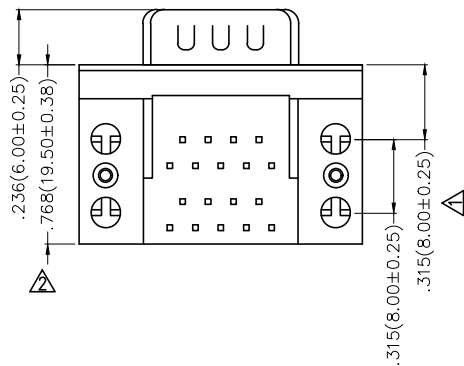
Current Rating: 3A AC(rms)/DC
 Voltage Rating: 250V AC(rms)/DC
 Contact Resistance: 25 mΩ Max
 Insulation Resistance: 1000 MΩ Min
 Withstanding Voltage: 500V AC r.m.s
 Temperature Range-Operating: -55°C~+105°C

Material and Plating

Housing: PBT (UL 94V-0)
 Contact: Copper Alloy/ Selective gold on contact area, tin on tail
 Shell: Spcc/ Nickel Plated
 Board Lock: Copper Alloy/ Tin Plated
 Screws: Copper Alloy/ Nickel Plated



Recommended P.C.Board Layout



Ordering Information

FDB 18 05 — MM D B 3 XX XX K C
 1 2 3 4 5 6 7 8 9 10 11

1 Category FDB-D-SUB Connector	2 Circuits 18-18Circuits	3 Distinction No. 05	4 Type MM-Male+Male	5 Assembly Layout D-DIP	6 Entry Angle B-90° Angle
7 Plating 3-Selective gold on contact area, tin on tail	8 Thickness of Plating 00-Gold Flash 03-3μ" Custom plate available	9 Color-Resin K6-Black U1-Blue	10 Packaging K-Tray	11 Distinction Type C-Type C	

	GENERAL TOLERANCES (UNLESS SPECIFIED)		APPROVE BY FRANK	DATE 28/JUN/13	PART NO. FDB1805-MMDB3XXXXKC	ITEM NO. FDB1805		
	DESIGN UNITS Inch (metric)	X.±.012(0.30) X.X±.008(0.20) X.XX±.006(0.15) X.XXX±.004(0.10)	X.'±5' X.'±2' .XX'±1" .XXX'±0.5'	CHECKED BY JACOB	DATE 28/JUN/13	TITLE D-SUB Connectors 18Circuits 90° Angle Male+Male		Leader Of Industry
SCALE 5:1	SIZE A4		DRAWN BY CHERRY	DATE 28/JUN/13	THIS DRAWING CONTAINS INFORMATION THAT IS PROPRIETARY TO TXGA INDUSTRIAL ELECTRONICS(S.Z)CO.,LTD AND SHOULD NOT BE USED WITHOUT WRITTEN PERMISSION		REV 3	SHEET NO. 1/1

1 2 3 4 5 6 7 8