

REV	LOCATIONS	DESCRIPTION	DATE	REVISER	APPD
1	△	Size changes	28/APR/21	KATE	JOHNNY
2	△	Add spray code	13/Jan/25	NICK	LEO

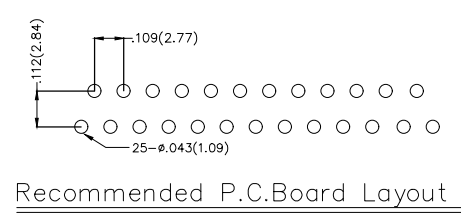
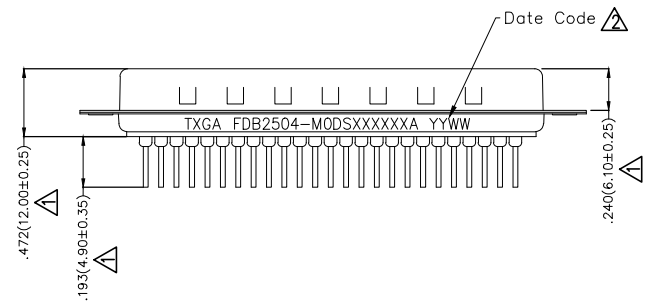
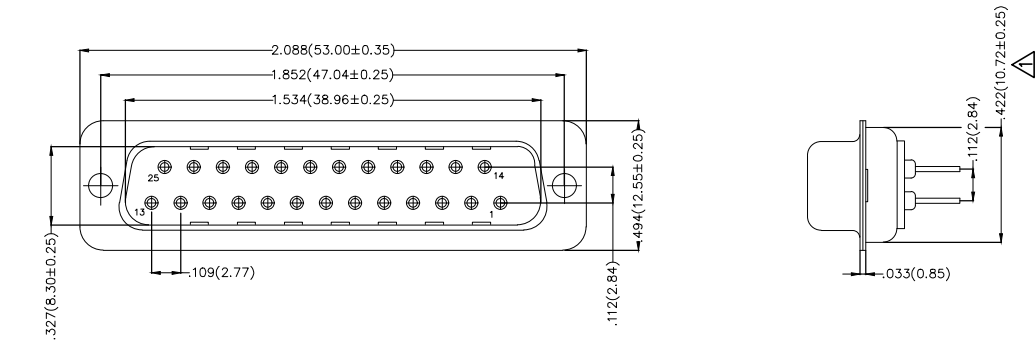
SPECIFICATIONS

Electrical

Current Rating: 3A AC(rms)/DC
Voltage Rating: 250V AC(rms)/DC
Contact Resistance: 25 mΩ Max
Insulation Resistance: 1000 MΩ Min
Withstanding Voltage: 500V AC r.m.s
Temperature Range-Operating: -55°C~+105°C

Material and plating

Housing: PBT UL 94V-0
Contact: Copper Alloy/ Gold plated/
Selective gold in contact area, tin on tail
Shell: SPCC/ Nickel Plated
Screws: Copper Alloy/ Nickel Plated



Ordering Information

FDB 25 04 - M0 D S X XX XX X A
1 2 3 4 5 6 7 8 9 10 11

1	Category FDB- D-SUB Connector	2	Circuits 25-25 Circuits	3	Distinction No. 04	4	Type M0-Male	5	Assembly Layout D-DIP	6	Entry Angle S-180° Vertical
7	Plating 1-Gold Plated 3-Selective gold in contact area, tin on tail	8	Thickness of Plating 00-Gold Flash 03-3μ" Custom Plate Available	9	Color-Resin K6-Black U1-Blue	10	Packaging K-Tray L-Tube	11	Distinction Type A-A Type		

 THIRD ANGLE PROJECTION	GENERAL TOLERANCES (UNLESS SPECIFIED)		APPROVE BY FRANK	DATE 28/JUN/13	PART NO. FDB2504-MODSXXXXXXA	ITEM NO. FDB2504	 Leader Of Industry	
	DESIGN UNITS Inch (metric)	X.±.012(0.30)	X.'±5'	CHECKED BY JACOB	DATE 28/JUN/13	TITLE D-SUB connector 25 Circuits 180° Vertical Male		REV 2
SCALE 5:1	SIZE A4	X.XX±.006(0.15)	.XX'±1'	DRAWN BY CHERRY	DATE 28/JUN/13	THIS DRAWING CONTAINS INFORMATION THAT IS PROPRIETARY TO TXGA INDUSTRIAL ELECTRONICS(S.Z)CO.,LTD AND SHOULD NOT BE USED WITHOUT WRITTEN PERMISSION		

REV	LOCATIONS	DESCRIPTION	DATE	REVISER	APPD
1	△	Size changes	28/APR/21	KATE	JOHNNY
2	△	Add spray code	13/Jan/25	NICK	LEO

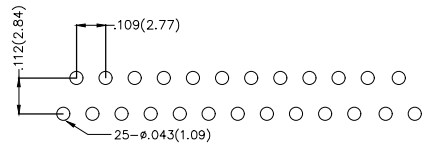
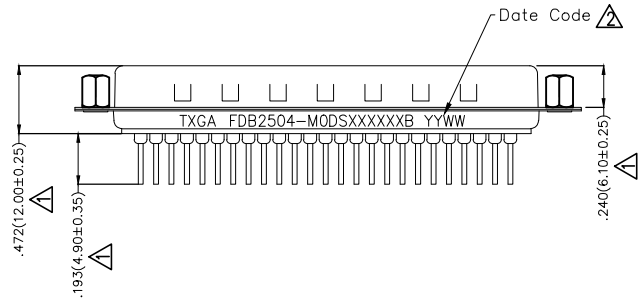
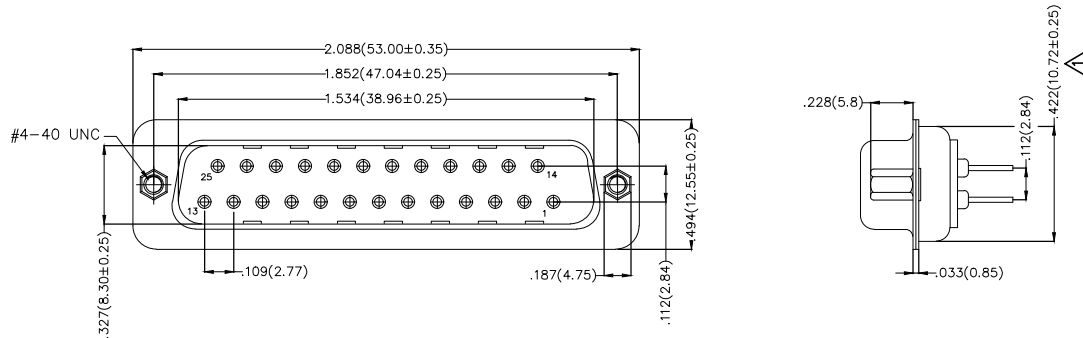
SPECIFICATIONS

Electrical

Current Rating: 3A AC(rms)/DC
Voltage Rating: 250V AC(rms)/DC
Contact Resistance: 25 mΩ Max
Insulation Resistance: 1000 MΩ Min
Withstanding Voltage: 500V AC r.m.s
Temperature Range—Operating: -55°C~+105°C

Material and plating

Housing: PBT UL 94V-0
Contact: Copper Alloy/ Gold plated/
Selective gold in contact area, tin on tail
Shell: SPCC/ Nickel Plated
Screws: Copper Alloy/ Nickel Plated



Recommended P.C.Board Layout

Ordering Information

FDB 25 04 - M0 D S X XX XX X B
1 2 3 4 5 6 7 8 9 10 11

1	Category FDB- D-SUB Connector	2	Circuits 25-25 Circuits	3	Distinction No. 04	4	Type M0-Male	5	Assembly Layout D-DIP	6	Entry Angle S-180° Vertical
7	Plating 1-Gold Plated 3-Selective gold in contact area, tin on tail	8	Thickness of Plating 00-Gold Flash 03-3μ" Custom Plate Available	9	Color-Resin K6-Black U1-Blue	10	Packaging K-Tray L-Tube	11	Distinction Type B-B Type		

 THIRD ANGLE PROJECTION	GENERAL TOLERANCES (UNLESS SPECIFIED)		APPROVE BY FRANK	DATE 28/JUN/13	PART NO. FDB2504-M0DSXXXXXB	ITEM NO. FDB2504	 Leader Of Industry	
	DESIGN UNITS Inch (metric)	X.X±.012(0.30) X.XX±.008(0.20) X.XX±.006(0.15) X.XXX±.004(0.10)	X.'±5' X.'±2' .XX'±1" .XXX'±0.5'	CHECKED BY JACOB	DATE 28/JUN/13	TITLE D-SUB connector 25 Circuits 180° Vertical Male		REV 2
SCALE 5:1	SIZE A4		DRAWN BY CHERRY	DATE 28/JUN/13	THIS DRAWING CONTAINS INFORMATION THAT IS PROPRIETARY TO TXGA INDUSTRIAL ELECTRONICS(S.Z)CO.,LTD AND SHOULD NOT BE USED WITHOUT WRITTEN PERMISSION			

REV	LOCATIONS	DESCRIPTION	DATE	REVISER	APPD
1	△	Size changes	28/APR/21	KATE	JOHNNY
2	△	Add spray code	13/Jan/25	NICK	LEO

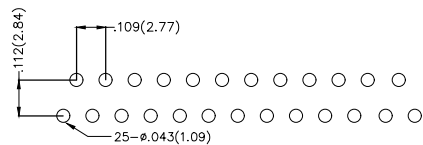
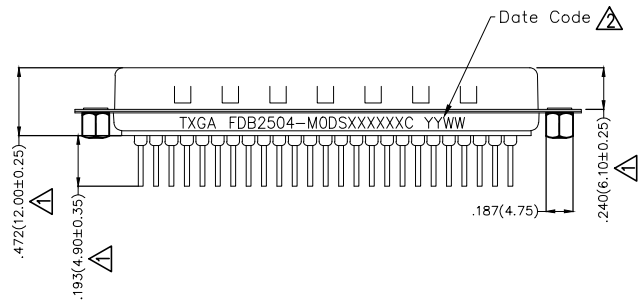
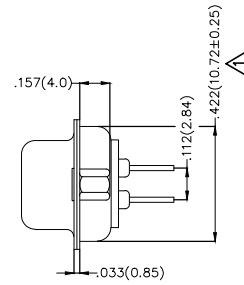
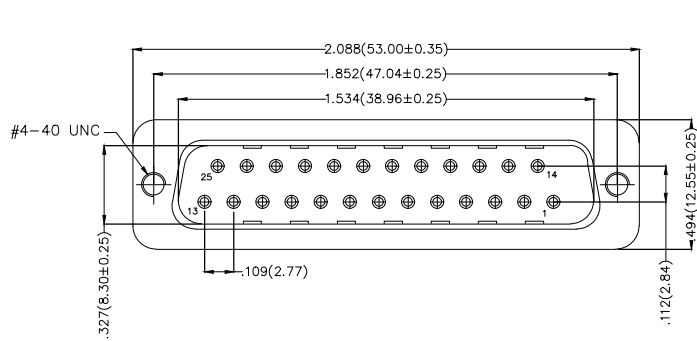
SPECIFICATIONS

Electrical

Current Rating: 3A AC(rms)/DC
Voltage Rating: 250V AC(rms)/DC
Contact Resistance: 25 mΩ Max
Insulation Resistance: 1000 MΩ Min
Withstanding Voltage: 500V AC r.m.s
Temperature Range-Operating: -55°C~+105°C

Material and plating

Housing: PBT UL 94V-0
Contact: Copper Alloy/ Gold plated/
Selective gold in contact area, tin on tail
Shell: SPCC/ Nickel Plated
Screws: Copper Alloy/ Nickel Plated



Recommended P.C. Board Layout

Ordering Information

FDB 25 04 - M0 D S X XX XX X C
1 2 3 4 5 6 7 8 9 10 11

1	Category	2	Circuits	3	Distinction No.	4	Type	5	Assembly Layout	6	Entry Angle
	FDB- D-SUB Connector		25-25 Circuits		04		MO-Male		D-DIP		S-180° Vertical
7	Plating	8	Thickness of Plating	9	Color-Resin	10	Packaging	11	Distinction Type		
	1-Gold Plated 3-Selective gold in contact area, tin on tail		00-Gold Flash 03-3μ" Custom Plate Available		K6-Black U1-Blue		K-Tray L-Tube		C-C Type		

<p>THIRD ANGLE PROJECTION</p>	GENERAL TOLERANCES (UNLESS SPECIFIED)		APPROVE BY	DATE	PART NO.	ITEM NO.	<p>Leader Of Industry</p>	
	X.±.012(0.30)	X.'±5'	FRANK	28/JUN/13	FDB2504-MODSXXXXXXC	FDB2504		
	X.X±.008(0.20)	X.'±2'	CHECKED BY	DATE	TITLE			
DESIGN UNITS Inch (metric)	X.XX±.006(0.15)	.XX'±1"	JACOB	28/JUN/13	D-SUB connector 25 Circuits 180° Vertical Male		REV 2	SHEET NO. 1/1
SCALE	SIZE	X.XXX±.004(0.10)	.XXX'±0.5"	DRAWN BY	DATE	THIS DRAWING CONTAINS INFORMATION THAT IS PROPRIETARY TO TXGA INDUSTRIAL ELECTRONICS(S.Z)CO.,LTD AND SHOULD NOT BE USED WITHOUT WRITTEN PERMISSION		
5:1	A4			CHERRY	28/JUN/13			

REV	LOCATIONS	DESCRIPTION	DATE	REVISER	APPD
1	△	Size changes	28/APR/21	KATE	JOHNNY
2	△	Add spray code	13/Jan/25	NICK	LEO

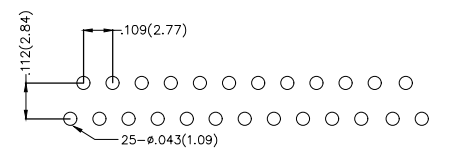
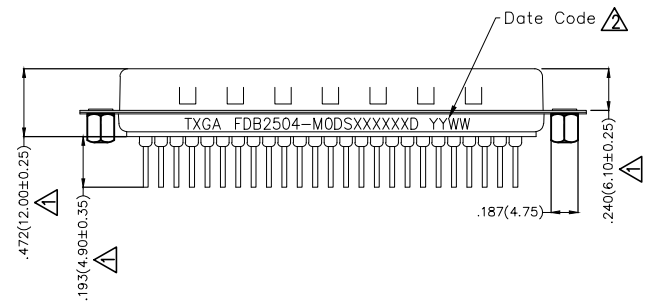
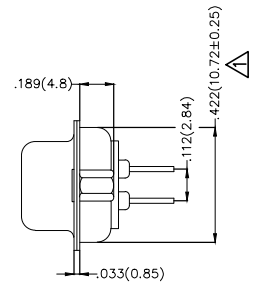
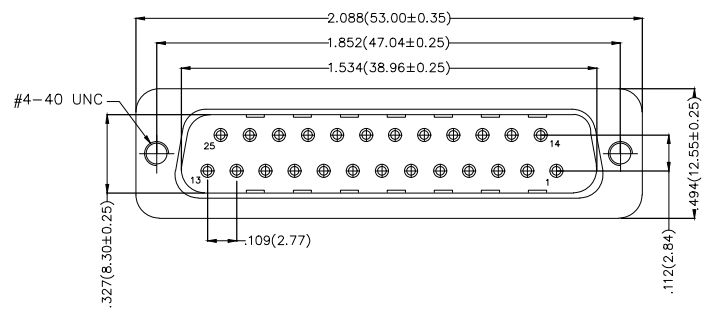
SPECIFICATIONS

Electrical

Current Rating: 3A AC(rms)/DC
Voltage Rating: 250V AC(rms)/DC
Contact Resistance: 25 mΩ Max
Insulation Resistance: 1000 MΩ Min
Withstanding Voltage: 500V AC r.m.s
Temperature Range—Operating: -55°C~+105°C

Material and plating

Housing: PBT UL 94V-0
Contact: Copper Alloy/ Gold plated/
Selective gold in contact area, tin on tail
Shell: SPCC/ Nickel Plated
Screws: Copper Alloy/ Nickel Plated



Recommended P.C.Board Layout

Ordering Information

FDB 25 04 - M0 D S X XX XX X D
1 2 3 4 5 6 7 8 9 10 11

1	Category	2	Circuits	3	Distinction No.	4	Type	5	Assembly Layout	6	Entry Angle
	FDB- D-SUB Connector		25-25 Circuits		04		MO-Male		D-DIP		S-180° Vertical
7	Plating	8	Thickness of Plating	9	Color-Resin	10	Packaging	11	Distinction Type		
	1-Gold Plated 3-Selective gold in contact area, tin on tail		00-Gold Flash 03-3μ" Custom Plate Available		K6-Black U1-Blue		K-Tray L-Tube		D-D Type		

 THIRD ANGLE PROJECTION	GENERAL TOLERANCES (UNLESS SPECIFIED)		APPROVE BY FRANK	DATE 28/JUN/13	PART NO. FDB2504-M0DSXXXXXD	ITEM NO. FDB2504	 Leader Of Industry	
	DESIGN UNITS Inch (metric)	X.±.012(0.30)	X.'±5'	CHECKED BY JACOB	DATE 28/JUN/13	TITLE D-SUB connector 25 Circuits 180° Vertical Male		REV 2
SCALE 5:1	SIZE A4	X.XX±.008(0.20)	X.'±2'	DRAWN BY CHERRY	DATE 28/JUN/13	THIS DRAWING CONTAINS INFORMATION THAT IS PROPRIETARY TO TXGA INDUSTRIAL ELECTRONICS(S.Z)CO.,LTD AND SHOULD NOT BE USED WITHOUT WRITTEN PERMISSION		

REV	LOCATIONS	DESCRIPTION	DATE	REVISER	APPD
1	△	Size changes	28/APR/21	KATE	JOHNNY
2	△	Add spray code	13/Jan/25	NICK	LEO

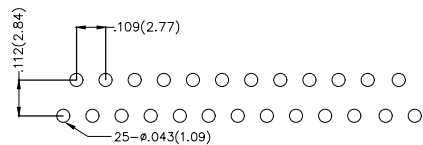
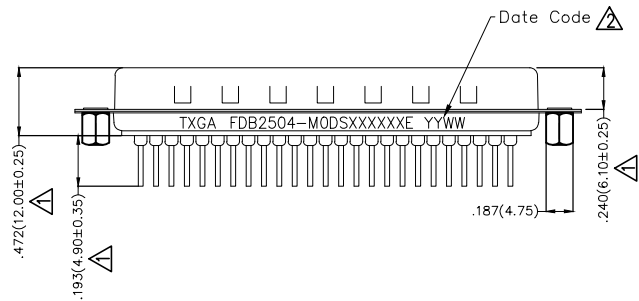
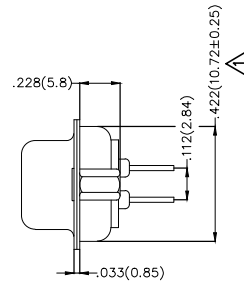
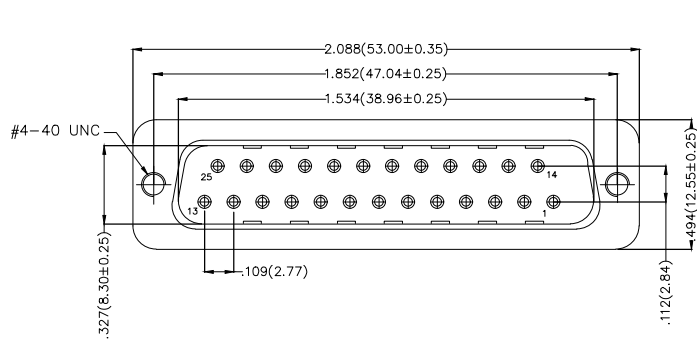
SPECIFICATIONS

Electrical

Current Rating: 3A AC(rms)/DC
Voltage Rating: 250V AC(rms)/DC
Contact Resistance: 25 mΩ Max
Insulation Resistance: 1000 MΩ Min
Withstanding Voltage: 500V AC r.m.s
Temperature Range-Operating: -55°C~+105°C

Material and plating

Housing: PBT UL 94V-0
Contact: Copper Alloy/ Gold plated/
Selective gold in contact area, tin on tail
Shell: SPCC/ Nickel Plated
Screws: Copper Alloy/ Nickel Plated



Recommended P.C. Board Layout

Ordering Information

FDB 25 04 - M0 D S X XX XX X E
1 2 3 4 5 6 7 8 9 10 11

1	Category	2	Circuits	3	Distinction No.	4	Type	5	Assembly Layout	6	Entry Angle
	FDB- D-SUB Connector		25-25 Circuits		04		MO-Male		D-DIP		S-180° Vertical
7	Plating	8	Thickness of Plating	9	Color-Resin	10	Packaging	11	Distinction Type		
	1-Gold Plated 3-Selective gold in contact area, tin on tail		00-Gold Flash 03-3μ" Custom Plate Available		K6-Black U1-Blue		K-Tray L-Tube		E-E Type		

<p>THIRD ANGLE PROJECTION</p>	GENERAL TOLERANCES (UNLESS SPECIFIED)		APPROVE BY	DATE	PART NO.	ITEM NO.	<p>Leader Of Industry</p>
	X.±.012(0.30)	X.±5'	FRANK	28/JUN/13	FDB2504-MODSXXXXXXE	FDB2504	
DESIGN UNITS Inch (metric)	X.X±.008(0.20)	X.±2'	CHECKED BY	DATE	TITLE		<p>REV 2</p> <p>SHEET NO. 1/1</p>
SCALE	X.XX±.006(0.15)	.XX±1'	JACOB	28/JUN/13	D-SUB connector 25 Circuits 180° Vertical Male		
SIZE	X.XXX±.004(0.10)	.XXX±0.5'	DRAWN BY	DATE	THIS DRAWING CONTAINS INFORMATION THAT IS PROPRIETARY TO TXGA INDUSTRIAL ELECTRONICS(S.Z)CO.,LTD AND SHOULD NOT BE USED WITHOUT WRITTEN PERMISSION		
5:1			CHERRY	28/JUN/13			

REV	LOCATIONS	DESCRIPTION	DATE	REVISER	APPD
1	△	Size changes	28/APR/21	KATE	JOHNNY
2	△	Add spray code	13/JAN/25	NICK	LEO

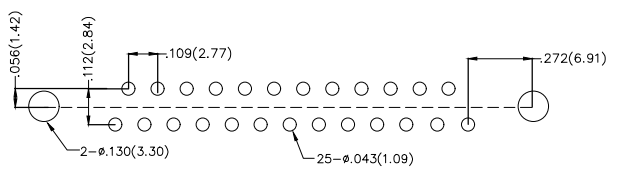
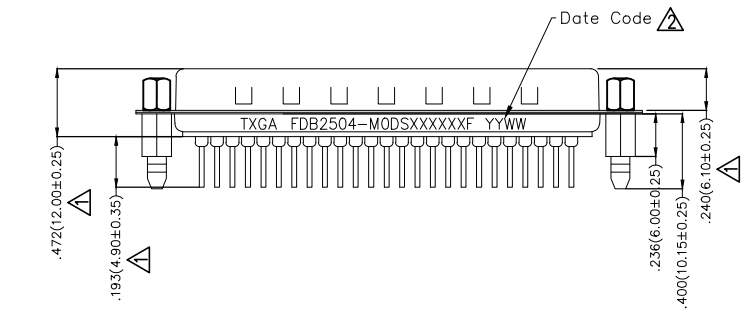
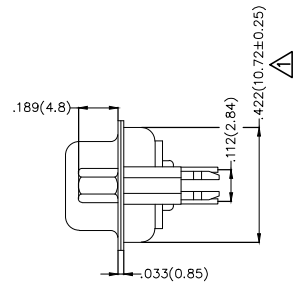
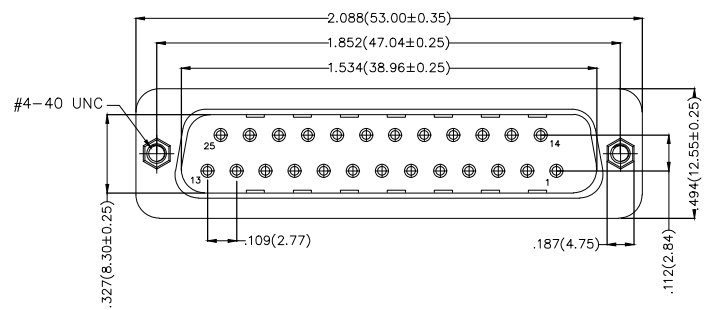
SPECIFICATIONS

Electrical

Current Rating: 3A AC(rms)/DC
Voltage Rating: 250V AC(rms)/DC
Contact Resistance: 25 mΩ Max
Insulation Resistance: 1000 MΩ Min
Withstanding Voltage: 500V AC r.m.s
Temperature Range-Operating: -55°C~+105°C

Material and plating

Housing: PBT UL 94V-0
Contact: Copper Alloy/ Gold plated/
Selective gold in contact area, tin on tail
Shell: SPCC/ Nickel Plated
Board Lock: Copper Alloy/ Tin Plated
Screws: Copper Alloy/ Nickel Plated



Recommended P.C.Board Layout

Ordering Information

FDB 25 04 - M0 D S X XX XX X F
1 2 3 4 5 6 7 8 9 10 11

1	Category	2	Circuits	3	Distinction No.	4	Type	5	Assembly Layout	6	Entry Angle
	FDB- D-SUB Connector		25-25 Circuits		04		M0-Male		D-DIP		S-180° Vertical
7	Plating	8	Thickness of Plating	9	Color-Resin	10	Packaging	11	Distinction Type		
	1-Gold Plated 3-Selective gold in contact area, tin on tail		00-Gold Flash 03-3μ" Custom Plate Available		K6-Black U1-Blue		K-Tray L-Tube		F-F Type		

 THIRD ANGLE PROJECTION	GENERAL TOLERANCES (UNLESS SPECIFIED)		APPROVE BY	DATE	PART NO.	ITEM NO.	 Leader Of Industry
	X.±.012(0.30)	X.±5'	FRANK	28/JUN/13	FDB2504-MODSXXXXXXF	FDB2504	
DESIGN UNITS Inch (metric)	X.X±.008(0.20)	X.±2'	CHECKED BY	DATE	TITLE		REV 2 SHEET NO. 1/1
SCALE	X.XX±.006(0.15)	.XX±1'	JACOB	28/JUN/13	D-SUB connector 25 Circuits 180° Vertical Male		
SIZE	X.XXX±.004(0.10)	.XXX±0.5'	DRAWN BY	DATE	THIS DRAWING CONTAINS INFORMATION THAT IS PROPRIETARY TO TXGA INDUSTRIAL ELECTRONICS(S.Z)CO.,LTD AND SHOULD NOT BE USED WITHOUT WRITTEN PERMISSION		
5:1			CHERRY	28/JUN/13			

REV	LOCATIONS	DESCRIPTION	DATE	REVISER	APPD
1	△	Size changes	28/APR/21	KATE	JOHNNY
2	△	Add spray code	13/Jan/25	NICK	LEO

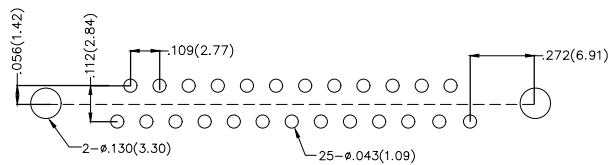
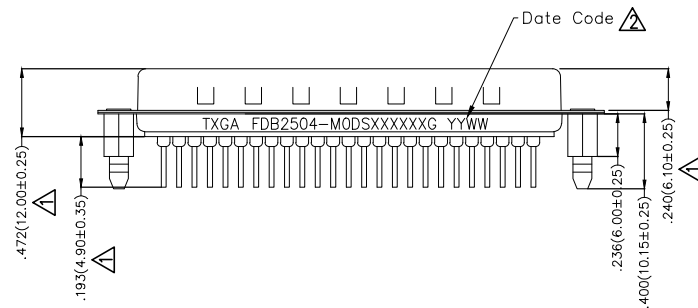
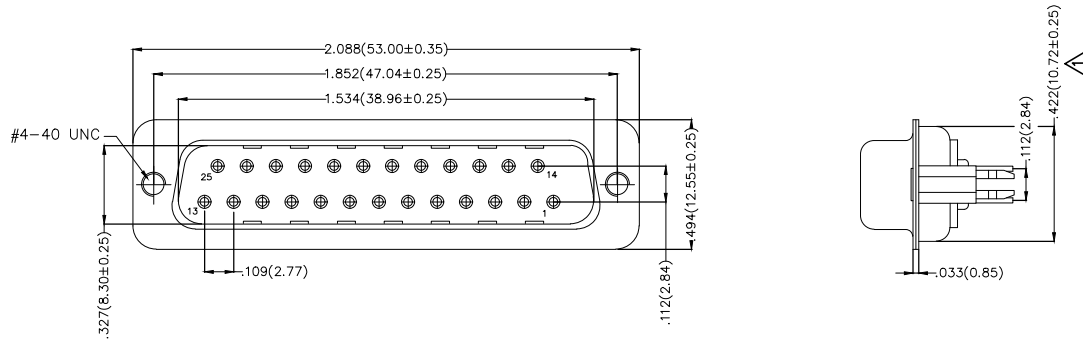
SPECIFICATIONS

Electrical

Current Rating: 3A AC(rms)/DC
Voltage Rating: 250V AC(rms)/DC
Contact Resistance: 25 mΩ Max
Insulation Resistance: 1000 MΩ Min
Withstanding Voltage: 500V AC r.m.s
Temperature Range-Operating: -55°C~+105°C

Material and plating

Housing: PBT UL 94V-0
Contact: Copper Alloy/ Gold plated/
Selective gold in contact area, tin on tail
Shell: SPCC/ Nickel Plated
Board Lock: Copper Alloy/ Tin Plated
Screws: Copper Alloy/ Nickel Plated



Recommended P.C.Board Layout

Ordering Information

FDB 25 04 - M0 D S X XX XX X G
1 2 3 4 5 6 7 8 9 10 11

1	Category	2	Circuits	3	Distinction No.	4	Type	5	Assembly Layout	6	Entry Angle
	FDB- D-SUB Connector		25-25 Circuits		04		MO-Male		D-DIP		S-180° Vertical
7	Plating	8	Thickness of Plating	9	Color-Resin	10	Packaging	11	Distinction Type		
	1-Gold Plated 3-Selective gold in contact area, tin on tail		00-Gold Flash 03-3μ" Custom Plate Available		K6-Black U1-Blue		K-Tray L-Tube		G-G Type		

 THIRD ANGLE PROJECTION	GENERAL TOLERANCES (UNLESS SPECIFIED)		APPROVE BY	DATE	PART NO.	ITEM NO.	 Leader Of Industry
	X.±.012(0.30)	X.'±5'	FRANK	10/MAR/20	FDB2504-MODSXXXXXXG	FDB2504	
DESIGN UNITS Inch (metric)	X.X±.008(0.20)	X.'±2'	CHECKED BY	DATE	TITLE		REV 2 SHEET NO. 1/1
SCALE	X.XX±.006(0.15)	.XX'±1'	CHERRY	10/MAR/20	D-SUB connector 25 Circuits 180° Vertical Male		
SIZE	X.XXX±.004(0.10)	.XXX'±0.5'	DRAWN BY	DATE	THIS DRAWING CONTAINS INFORMATION THAT IS PROPRIETARY TO TXGA INDUSTRIAL ELECTRONICS(S.Z)CO.,LTD AND SHOULD NOT BE USED WITHOUT WRITTEN PERMISSION		
5:1			ZOEY	10/MAR/20			