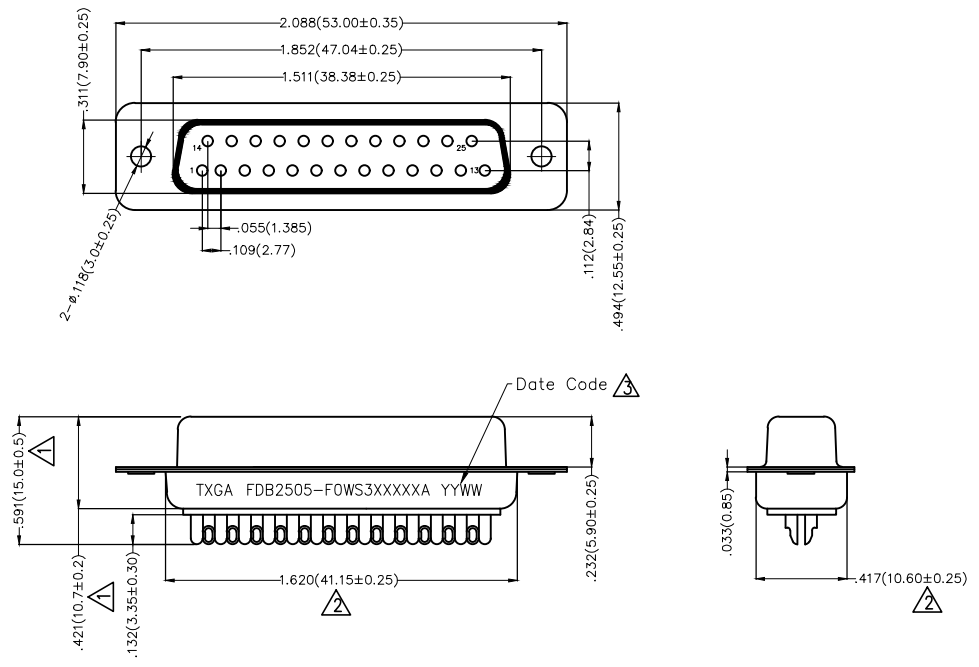


REV	LOCATIONS	DESCRIPTION	DATE	REVISER	APPD
1		Size change	28/JAN/21	KATE	CHERRY
2		Size change	05/JUL/22	MATT	CHERRY
3		Add spray code	13/Jan/25	NICK	LEO



**SPECIFICATIONS**

**Electrical**  
 Current Rating: 3A AC(rms)/DC  
 Voltage Rating: 250V AC(rms)/DC  
 Contact Resistance: 25 mΩ Max  
 Insulation Resistance: 1000 MΩ Min  
 Withstanding Voltage: 500V AC r.m.s  
 Temperature Range-Operating: -55°C~+105°C

**Material and plating**  
 Housing: PBT UL 94V-0  
 Contact: Copper Alloy/  
 Selective gold on contact area, tin on tail  
 Shell: SPCC/ Nickel Plated

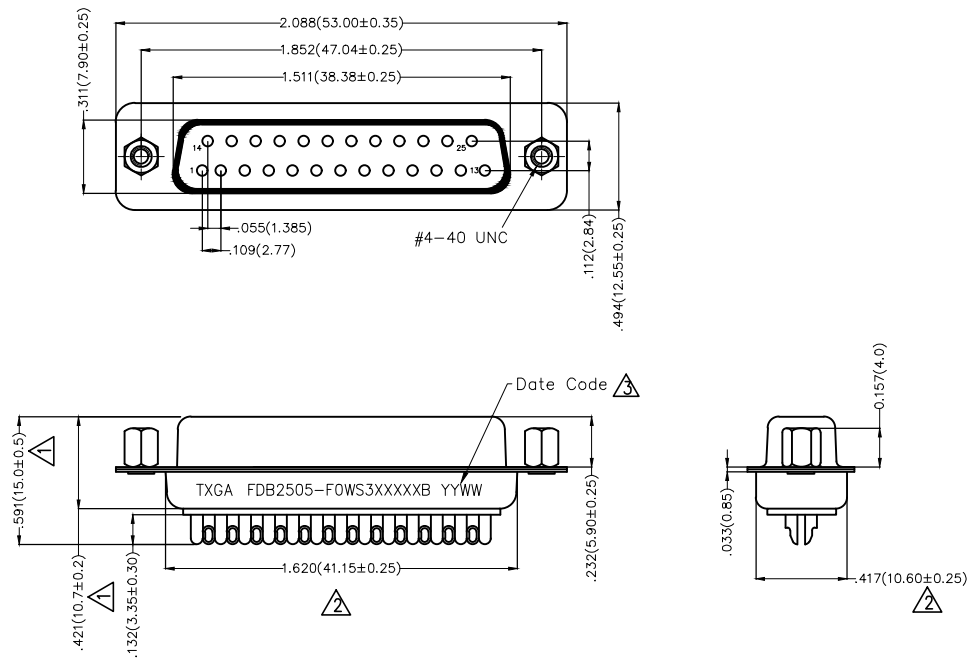
**Ordering Information**

FDB 25 05 - F0 W S 3 XX XX X A  
 1 2 3 4 5 6 7 8 9 10 11

1	Category FDB- D-SUB Connector	2	Circuits 25-25 Circuits	3	Distinction No. 05	4	Type F0-Female	5	Assembly Layout W-Welding Type	6	Entry Angle S-180° Vertical
7	Plating 3-Selective gold on contact area, tin on tail	8	Thickness of Plating 00-Gold Flash 03-3μ" Custom Plate Available	9	Color-Resin K6-Black U1-Blue	10	Packaging K-Tray L-Tube	11	Distinction Type A-A Type		

 <b>THIRD ANGLE PROJECTION</b>	<b>GENERAL TOLERANCES (UNLESS SPECIFIED)</b> X.±.012(0.30) X.±5' X.X±.008(0.20) X.±2' X.XX±.006(0.15) .XX±1" X.XXX±.004(0.10) .XXX±0.5'		<b>APPROVE BY</b> FRANK <b>CHECKED BY</b> JACOB <b>DRAWN BY</b> CHERRY	<b>DATE</b> 28/JUN/13 <b>DATE</b> 28/JUN/13 <b>DATE</b> 28/JUN/13	<b>PART NO.</b> FDB2505-F0WS3XXXXXA <b>TITLE</b> D-SUB Connectors 25 Circuits 180° Vertical Female	<b>ITEM NO.</b> FDB2505	 <b>TXGA</b> Leader Of Industry	<b>REV 3</b>	<b>SHEET NO. 1/1</b>
	<b>DESIGN UNITS</b> Inch (metric)	<b>SCALE</b> 5:1	<b>SIZE</b> A4	THIS DRAWING CONTAINS INFORMATION THAT IS PROPRIETARY TO TXGA INDUSTRIAL ELECTRONICS(S.Z)CO.,LTD AND SHOULD NOT BE USED WITHOUT WRITTEN PERMISSION					

REV	LOCATIONS	DESCRIPTION	DATE	REVISER	APPD
1		Size change	28/JAN/21	KATE	CHERRY
2		Size change	05/JUL/22	MATT	CHERRY
3		Add spray code	13/Jan/25	NICK	LEO



**SPECIFICATIONS**

**Electrical**  
 Current Rating: 3A AC(rms)/DC  
 Voltage Rating: 250V AC(rms)/DC  
 Contact Resistance: 25 mΩ Max  
 Insulation Resistance: 1000 MΩ Min  
 Withstanding Voltage: 500V AC r.m.s  
 Temperature Range-Operating: -55°C~+105°C

**Material and plating**  
 Housing: PBT UL 94V-0  
 Contact: Copper Alloy/  
 Selective gold on contact area, tin on tail  
 Shell: SPCC/ Nickel Plated  
 Nuts: Copper Alloy/ Nickel Plated

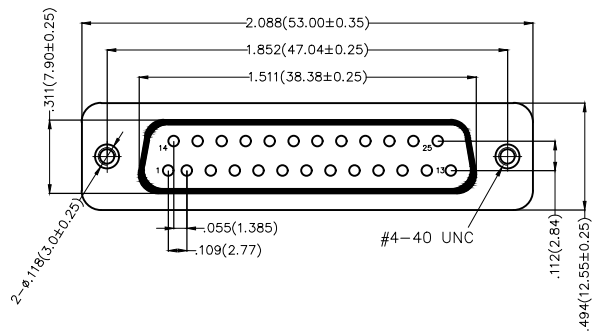
**Ordering Information**

FDB 25 05 - F0 W S 3 XX XX X B  
 1 2 3 4 5 6 7 8 9 10 11

1	Category FDB- D-SUB Connector	2	Circuits 25-25 Circuits	3	Distinction No. 05	4	Type F0-Female	5	Assembly Layout W-Welding Type	6	Entry Angle S-180° Vertical
7	Plating 3-Selective gold on contact area, tin on tail	8	Thickness of Plating 00-Gold Flash 03-3μ" Custom Plate Available	9	Color-Resin K6-Black U1-Blue	10	Packaging K-Tray L-Tube	11	Distinction Type B-B Type		

 <b>THIRD ANGLE PROJECTION</b>	<b>GENERAL TOLERANCES (UNLESS SPECIFIED)</b> X.±.012(0.30) X.±5' X.X±.008(0.20) X.±2' X.XX±.006(0.15) .XX±1" X.XXX±.004(0.10) .XXX±0.5'		<b>APPROVE BY</b> FRANK <b>CHECKED BY</b> JACOB <b>DRAWN BY</b> CHERRY	<b>DATE</b> 28/JUN/13 <b>DATE</b> 28/JUN/13 <b>DATE</b> 28/JUN/13	<b>PART NO.</b> FDB2505-F0WS3XXXXXB <b>TITLE</b> D-SUB Connectors 25 Circuits 180° Vertical Female	<b>ITEM NO.</b> FDB2505 <b>REV</b> 3 <b>SHEET NO.</b> 1/1	 <b>TXGA</b> Leader Of Industry
	<b>DESIGN UNITS</b> Inch (metric) <b>SCALE</b> 5:1 <b>SIZE</b> A4	<b>THIS DRAWING CONTAINS INFORMATION THAT IS PROPRIETARY TO TXGA INDUSTRIAL ELECTRONICS(S.Z)CO.,LTD AND SHOULD NOT BE USED WITHOUT WRITTEN PERMISSION</b>					

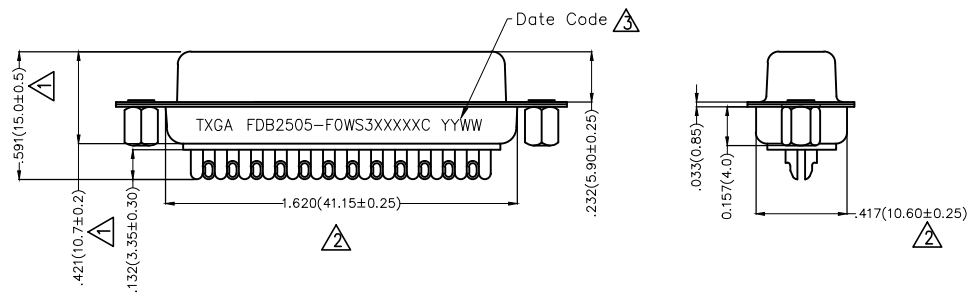
REV	LOCATIONS	DESCRIPTION	DATE	REVISER	APPD
1		Size change	28/JAN/21	KATE	CHERRY
2		Size change	05/JUL/22	MATT	CHERRY
3		Add spray code	13/Jan/25	NICK	LEO



SPECIFICATIONS

Electrical  
 Current Rating: 3A AC(rms)/DC  
 Voltage Rating: 250V AC(rms)/DC  
 Contact Resistance: 25 mΩ Max  
 Insulation Resistance: 1000 MΩ Min  
 Withstanding Voltage: 500V AC r.m.s  
 Temperature Range-Operating: -55°C~+105°C

Material and plating  
 Housing: PBT UL 94V-0  
 Contact: Copper Alloy/  
 Selective gold on contact area, tin on tail  
 Shell: SPCC/ Nickel Plated  
 Nuts: Copper Alloy/ Nickel Plated



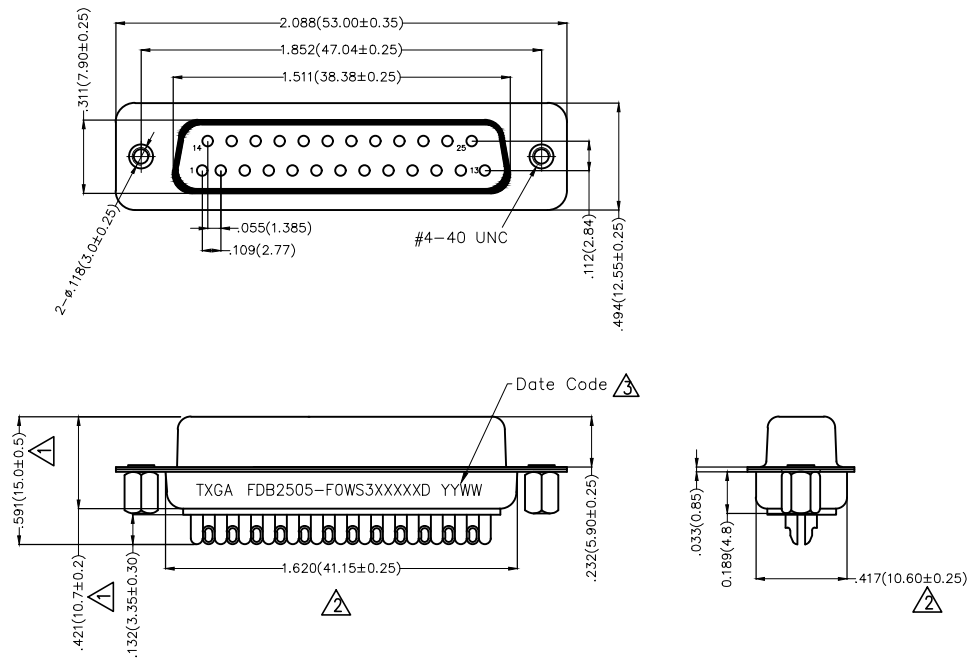
Ordering Information

FDB 25 05 - F0 W S 3 XX XX X C  
 1 2 3 4 5 6 7 8 9 10 11

1	Category FDB- D-SUB Connector	2	Circuits 25-25 Circuits	3	Distinction No. 05	4	Type F0-Female	5	Assembly Layout W-Welding Type	6	Entry Angle S-180° Vertical
7	Plating 3-Selective gold on contact area, tin on tail	8	Thickness of Plating 00-Gold Flash 03-3μ" Custom Plate Available	9	Color-Resin K6-Black U1-Blue	10	Packaging K-Tray L-Tube	11	Distinction Type C-C Type		

 THIRD ANGLE PROJECTION	GENERAL TOLERANCES (UNLESS SPECIFIED)		APPROVE BY FRANK	DATE 28/JUN/13	PART NO. FDB2505-F0WS3XXXXXC	ITEM NO. FDB2505	 Leader Of Industry	
	DESIGN UNITS Inch (metric)	X.±.012(0.30) X.X±.008(0.20) X.XX±.006(0.15) X.XXX±.004(0.10)	X.±5' .X'±2' .XX'±1' .XXX'±0.5'	CHECKED BY JACOB	DATE 28/JUN/13	TITLE D-SUB Connectors 25 Circuits 180° Vertical Female		REV 3
SCALE 5:1	SIZE A4	DRAWN BY CHERRY		DATE 28/JUN/13	THIS DRAWING CONTAINS INFORMATION THAT IS PROPRIETARY TO TXGA INDUSTRIAL ELECTRONICS(S.Z)CO.,LTD AND SHOULD NOT BE USED WITHOUT WRITTEN PERMISSION			

REV	LOCATIONS	DESCRIPTION	DATE	REVISER	APPD
1		Size change	28/JAN/21	KATE	CHERRY
2		Size change	05/JUL/22	MATT	CHERRY
3		Add spray code	13/Jan/25	NICK	LEO



**SPECIFICATIONS**

**Electrical**

Current Rating: 3A AC(rms)/DC  
Voltage Rating: 250V AC(rms)/DC  
Contact Resistance: 25 mΩ Max  
Insulation Resistance: 1000 MΩ Min  
Withstanding Voltage: 500V AC r.m.s  
Temperature Range-Operating: -55°C~+105°C

**Material and plating**

Housing: PBT UL 94V-0  
Contact: Copper Alloy/  
Selective gold on contact area, tin on tail  
Shell: SPCC/ Nickel Plated  
Nuts: Copper Alloy/ Nickel Plated

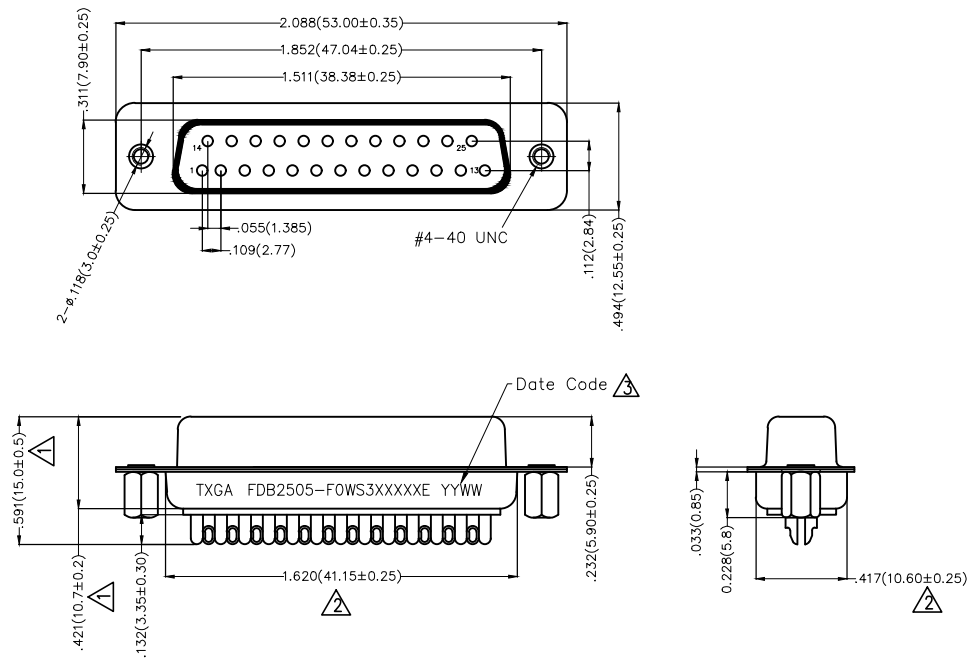
**Ordering Information**

FDB 25 05 - F0 W S 3 XX XX X D  
1 2 3 4 5 6 7 8 9 10 11

1	Category FDB- D-SUB Connector	2	Circuits 25-25 Circuits	3	Distinction No. 05	4	Type F0-Female	5	Assembly Layout W-Welding Type	6	Entry Angle S-180° Vertical
7	Plating 3-Selective gold on contact area, tin on tail	8	Thickness of Plating 00-Gold Flash 03-3μ" Custom Plate Available	9	Color-Resin K6-Black U1-Blue	10	Packaging K-Tray L-Tube	11	Distinction Type D-D Type		

 <b>THIRD ANGLE PROJECTION</b>	<b>GENERAL TOLERANCES (UNLESS SPECIFIED)</b> X.±.012(0.30) X.±5' X.X±.008(0.20) .X'±2' X.XX±.006(0.15) .XX'±1" X.XXX±.004(0.10) .XXX'±0.5'		<b>APPROVE BY</b> FRANK <b>CHECKED BY</b> JACOB <b>DRAWN BY</b> CHERRY	<b>DATE</b> 28/JUN/13 <b>DATE</b> 28/JUN/13 <b>DATE</b> 28/JUN/13	<b>PART NO.</b> FDB2505-F0WS3XXXXX <b>ITEM NO.</b> FDB2505	 <b>TXGA</b> Leader Of Industry
	<b>DESIGN UNITS</b> Inch (metric) <b>SCALE</b> 5:1 <b>SIZE</b> A4	<b>TITLE</b> D-SUB Connectors 25 Circuits 180° Vertical Female THIS DRAWING CONTAINS INFORMATION THAT IS PROPRIETARY TO TXGA INDUSTRIAL ELECTRONICS(S.Z)CO.,LTD AND SHOULD NOT BE USED WITHOUT WRITTEN PERMISSION	<b>REV 3</b> <b>SHEET NO. 1/1</b>			

REV	LOCATIONS	DESCRIPTION	DATE	REVISER	APPD
1		Size change	28/JAN/21	KATE	CHERRY
2		Size change	05/JUL/22	MATT	CHERRY
3		Add spray code	13/Jan/25	NICK	LEO



**SPECIFICATIONS**

**Electrical**  
 Current Rating: 3A AC(rms)/DC  
 Voltage Rating: 250V AC(rms)/DC  
 Contact Resistance: 25 mΩ Max  
 Insulation Resistance: 1000 MΩ Min  
 Withstanding Voltage: 500V AC r.m.s  
 Temperature Range-Operating: -55°C~+105°C

**Material and plating**  
 Housing: PBT UL 94V-0  
 Contact: Copper Alloy/  
 Selective gold on contact area, tin on tail  
 Shell: SPCC/ Nickel Plated  
 Nuts: Copper Alloy/ Nickel Plated

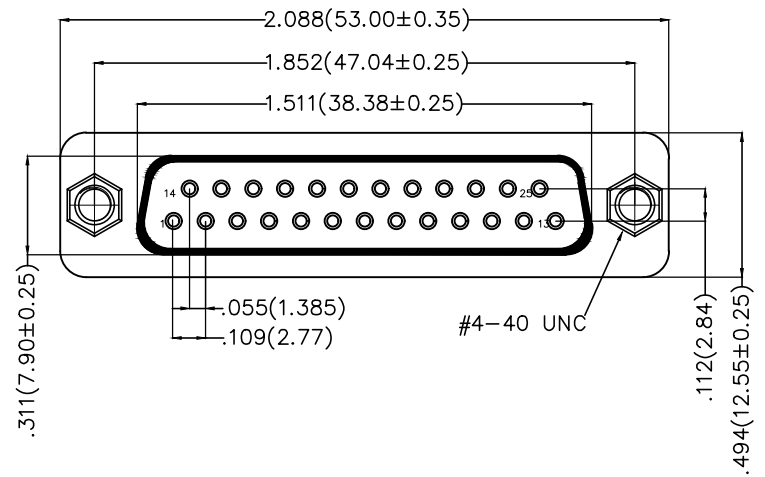
**Ordering Information**

FDB 25 05 - F0 W S 3 XX XX X E  
 1 2 3 4 5 6 7 8 9 10 11

1	Category FDB- D-SUB Connector	2	Circuits 25-25 Circuits	3	Distinction No. 05	4	Type F0-Female	5	Assembly Layout W-Welding Type	6	Entry Angle S-180° Vertical
7	Plating 3-Selective gold on contact area, tin on tail	8	Thickness of Plating 00-Gold Flash 03-3μ" Custom Plate Available	9	Color-Resin K6-Black U1-Blue	10	Packaging K-Tray L-Tube	11	Distinction Type E-E Type		

 <b>THIRD ANGLE PROJECTION</b>	<b>GENERAL TOLERANCES (UNLESS SPECIFIED)</b> X.±.012(0.30) X.±5' X.X±.008(0.20) X.±2' X.XX±.006(0.15) .XX±1" X.XXX±.004(0.10) .XXX±0.5'		<b>APPROVE BY</b> FRANK <b>CHECKED BY</b> JACOB <b>DRAWN BY</b> CHERRY	<b>DATE</b> 28/JUN/13 <b>DATE</b> 28/JUN/13 <b>DATE</b> 28/JUN/13	<b>PART NO.</b> FDB2505-FOWS3XXXXXE <b>TITLE</b> D-SUB Connectors 25 Circuits 180° Vertical Female	<b>ITEM NO.</b> FDB2505 <b>REV</b> 3 <b>SHEET NO.</b> 1/1	 <b>TXGA</b> Leader Of Industry
	<b>DESIGN UNITS</b> Inch (metric) <b>SCALE</b> 5:1 <b>SIZE</b> A4	<b>THIS DRAWING CONTAINS INFORMATION THAT IS PROPRIETARY TO TXGA INDUSTRIAL ELECTRONICS(S.Z)CO.,LTD AND SHOULD NOT BE USED WITHOUT WRITTEN PERMISSION</b>					

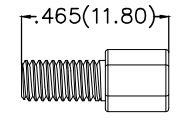
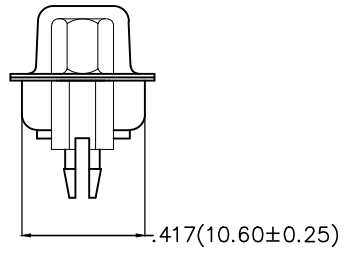
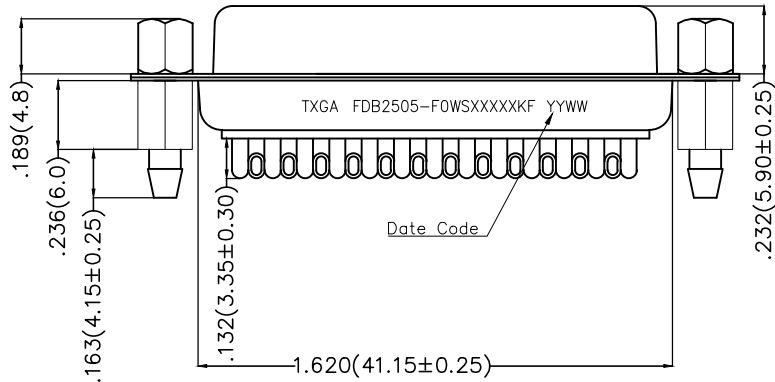
REV	LOCATIONS	DESCRIPTION	DATE	REVISER	APPD
1	△	Change screw material	12/May/25	NICK	LEO



**SPECIFICATIONS**

**Electrical**  
 Current Rating: 3A AC(rms)/DC  
 Voltage Rating: 250V AC(rms)/DC  
 Contact Resistance: 25 mΩ Max  
 Insulation Resistance: 1000 MΩ Min  
 Withstanding Voltage: 500V AC r.m.s  
 Temperature Range—Operating: -55°C~+105°C

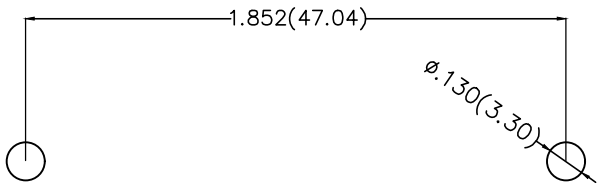
**Material and plating**  
 Housing: PBT UL 94V-0  
 Contact: Copper Alloy/  
 Selective gold on contact area, tin on tail  
 Shell: SPCC/ Front Nickel Plated; Back Tin Plated  
 △ Screws: Carbon steel/ Nickel Plated  
 Board Lock: Copper Alloy /Tin Plated



Screw length

**Ordering Information**

FDB 25 05 - F0 W S 3 XX XX X F  
 1 2 3 4 5 6 7 8 9 10 11



Recommended P.C.Board Layout

1 Category FDB- D-SUB Connector	2 Circuits 25-25 Circuits	3 Distinction No. 05	4 Type F0-Female	5 Assembly Layout W-Welding Type	6 Entry Angle S-180° Vertical
7 Plating 3-Selective gold on contact area, tin on tail	8 Thickness of Plating 00-Gold Flash 03-3μ" Custom Plate Available	9 Color-Resin K6-Black U1-Blue	10 Packaging K-Tray	11 Distinction Type F-F Type	

 THIRD ANGLE PROJECTION	GENERAL TOLERANCES (UNLESS SPECIFIED)		APPROVE BY FRANK	DATE 28/JUN/13	PART NO. FDB2505-F0WS3XXXXKF	ITEM NO. FDB2505	 Building Technology Cornerstone	
	DESIGN UNITS Inch (metric)	X.±.012(0.30) X.X±.008(0.20) X.XX±.006(0.15) X.XXX±.004(0.10)	X.±5" .X±2" .XX±1" .XXX±0.5"	CHECKED BY JACOB	DATE 28/JUN/13	TITLE D-SUB Connectors 25 Circuits 180° Vertical Female		REV 1
SCALE 5:1	SIZE A4		DRAWN BY CHERRY	DATE 28/JUN/13	THIS DRAWING CONTAINS INFORMATION THAT IS PROPRIETARY TO TXGA INDUSTRIAL ELECTRONICS(S.Z)CO.,LTD AND SHOULD NOT BE USED WITHOUT WRITTEN PERMISSION			