

REV	LOCATIONS	DESCRIPTION	DATE	REVISER	APPD
1	△	Size changes	23/APR/21	KATE	JOHNNY
2	△	Add spray code	13/Jan/25	NICK	LEO

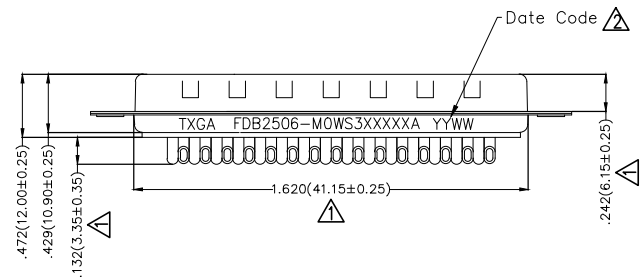
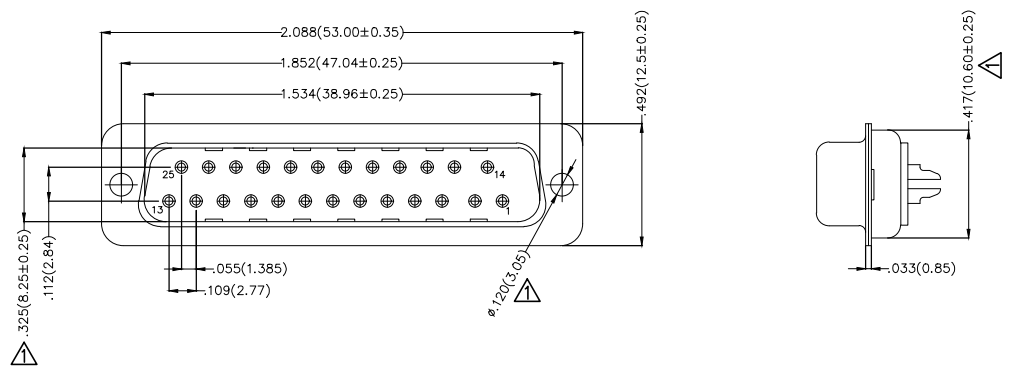
SPECIFICATIONS

Electrical

Current Rating: 3A AC(rms)/DC
Voltage Rating: 250V AC(rms)/DC
Contact Resistance: 25 mΩ Max
Insulation Resistance: 1000 MΩ Min
Withstanding Voltage: 500V AC r.m.s
Temperature Range-Operating: -55°C~+105°C

Material and plating

Housing: PBT UL 94V-0
Contact: Copper Alloy/
Selective gold in contact area, tin on tail
Shell: SPCC/ Nickel Plated



Ordering Information

FDB 25 06 - M0 W S 3 XX XX X A
1 2 3 4 5 6 7 8 9 10 11

1	Category FDB- D-SUB Connector	2	Circuits 25-25 Circuits	3	Distinction No. 06	4	Type MO-Male	5	Assembly Layout W-Welding Type	6	Entry Angle S-180° Vertical
7	Plating 3-Selective gold in contact area, tin on tail	8	Thickness of Plating 00-Gold Flash 03-3μ" Custom Plate Available	9	Color-Resin K6-Black U1-Blue WH-White	10	Packaging K-Tray L-Tube	11	Distinction Type A-A Type		

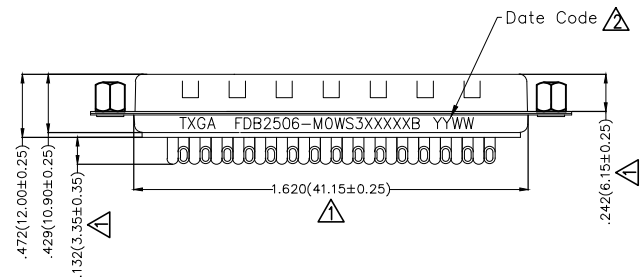
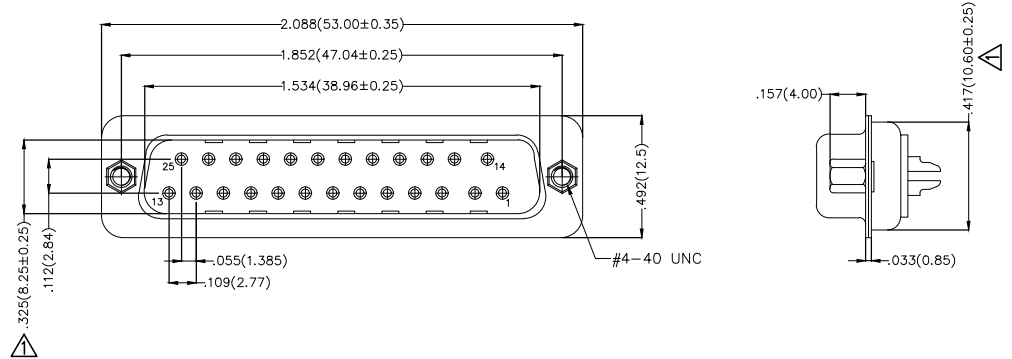
<p>THIRD ANGLE PROJECTION</p>	GENERAL TOLERANCES (UNLESS SPECIFIED)		APPROVE BY FRANK	DATE 28/JUN/13	PART NO. FDB2506-MOWS3XXXXXA	ITEM NO. FDB2506	<p>Leader Of Industry</p>	
	DESIGN UNITS Inch (metric)	X.±.012(0.30) X.X±.008(0.20) X.XX±.006(0.15) X.XXX±.004(0.10)	X.±5' .X'±2' .XX'±1' .XXX'±0.5'	CHECKED BY JACOB	DATE 28/JUN/13	TITLE D-SUB connector 25 Circuits 180° Vertical Male		REV 2
SCALE 5:1	SIZE A4	DRAWN BY CHERRY		DATE 28/JUN/13	THIS DRAWING CONTAINS INFORMATION THAT IS PROPRIETARY TO TXGA INDUSTRIAL ELECTRONICS(S.Z)CO.,LTD AND SHOULD NOT BE USED WITHOUT WRITTEN PERMISSION			

REV	LOCATIONS	DESCRIPTION	DATE	REVISER	APPD
1	△	Size changes	23/APR/21	KATE	JOHNNY
2	△	Add spray code	13/Jan/25	NICK	LEO

SPECIFICATIONS

Electrical
 Current Rating: 3A AC(rms)/DC
 Voltage Rating: 250V AC(rms)/DC
 Contact Resistance: 25 mΩ Max
 Insulation Resistance: 1000 MΩ Min
 Withstanding Voltage: 500V AC r.m.s
 Temperature Range-Operating: -55°C~+105°C

Material and plating
 Housing: PBT UL 94V-0
 Contact: Copper Alloy/
 Selective gold in contact area, tin on tail
 Shell: SPCC/ Nickel Plated
 Screws: Copper Alloy/ Nickel Plated



Ordering Information

FDB 25 06 - M0 W S 3 XX XX X B
 1 2 3 4 5 6 7 8 9 10 11

1	Category FDB- D-SUB Connector	2	Circuits 25-25 Circuits	3	Distinction No. 06	4	Type MO-Male	5	Assembly Layout W-Welding Type	6	Entry Angle S-180° Vertical
7	Plating 3-Selective gold in contact area, tin on tail	8	Thickness of Plating 00-Gold Flash 03-3μ" Custom Plate Available	9	Color-Resin K6-Black U1-Blue	10	Packaging K-Tray L-Tube	11	Distinction Type B-B Type		

 THIRD ANGLE PROJECTION	GENERAL TOLERANCES (UNLESS SPECIFIED)		APPROVE BY FRANK	DATE 28/JUN/13	PART NO. FDB2506-MOWS3XXXXXB	ITEM NO. FDB2506	 Leader Of Industry	
	DESIGN UNITS Inch (metric)	X.±.012(0.30)	X.±5'	CHECKED BY JACOB	DATE 28/JUN/13	TITLE D-SUB connector 25 Circuits 180° Vertical Male		REV 2
SCALE 5:1	SIZE A4	X.XX±.008(0.20)	X'±2'	DRAWN BY CHERRY	DATE 28/JUN/13	THIS DRAWING CONTAINS INFORMATION THAT IS PROPRIETARY TO TXGA INDUSTRIAL ELECTRONICS(S.Z)CO.,LTD AND SHOULD NOT BE USED WITHOUT WRITTEN PERMISSION		

REV	LOCATIONS	DESCRIPTION	DATE	REVISER	APPD
1	△	Size changes	23/APR/21	KATE	JOHNNY
2	△	Add spray code	13/Jan/25	NICK	LEO

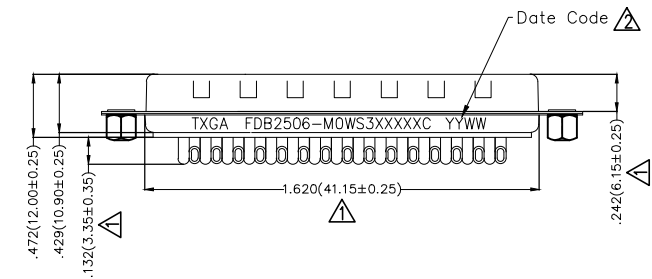
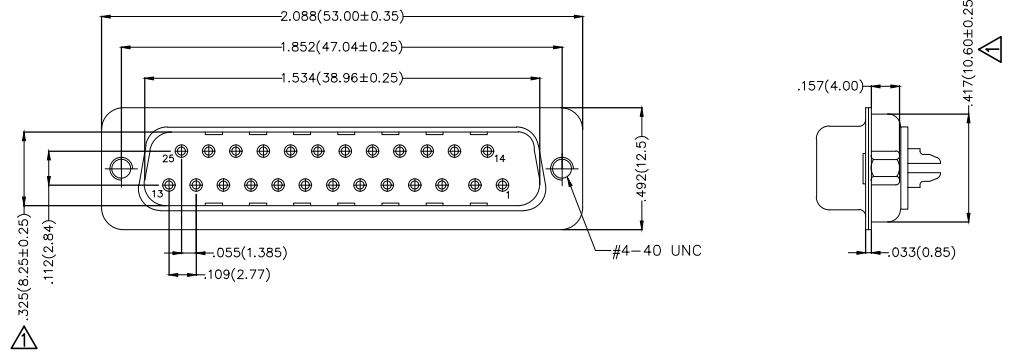
SPECIFICATIONS

Electrical

Current Rating: 3A AC(rms)/DC
Voltage Rating: 250V AC(rms)/DC
Contact Resistance: 25 mΩ Max
Insulation Resistance: 1000 MΩ Min
Withstanding Voltage: 500V AC r.m.s
Temperature Range-Operating: -55°C~+105°C

Material and plating


Housing: PBT UL 94V-0
Contact: Copper Alloy/
Selective gold in contact area, tin on tail
Shell: SPCC/ Nickel Plated
Screws: Copper Alloy/ Nickel Plated



Ordering Information

FDB 25 06 - M0 W S 3 XX XX X C
1 2 3 4 5 6 7 8 9 10 11

1	Category FDB- D-SUB Connector	2	Circuits 25-25 Circuits	3	Distinction No. 06	4	Type MO-Male	5	Assembly Layout W-Welding Type	6	Entry Angle S-180° Vertical
7	Plating 3-Selective gold in contact area, tin on tail	8	Thickness of Plating 00-Gold Flash 03-3μ" Custom Plate Available	9	Color-Resin K6-Black U1-Blue	10	Packaging K-Tray L-Tube	11	Distinction Type C-C Type		

THIRD ANGLE PROJECTION	GENERAL TOLERANCES (UNLESS SPECIFIED)		APPROVE BY FRANK	DATE 28/JUN/13	PART NO. FDB2506-MOWS3XXXXXC	ITEM NO. FDB2506	 Leader Of Industry	
	DESIGN UNITS Inch (metric)	X.±.012(0.30) X.X±.008(0.20) X.XX±.006(0.15) X.XXX±.004(0.10)	X.±5' X.±2' .XX±1" .XXX±0.5'	CHECKED BY JACOB	DATE 28/JUN/13	TITLE D-SUB connector 25 Circuits 180° Vertical Male		REV 2
SCALE 5:1	SIZE A4		DRAWN BY CHERRY	DATE 28/JUN/13	THIS DRAWING CONTAINS INFORMATION THAT IS PROPRIETARY TO TXGA INDUSTRIAL ELECTRONICS(S.Z)CO.,LTD AND SHOULD NOT BE USED WITHOUT WRITTEN PERMISSION			

REV	LOCATIONS	DESCRIPTION	DATE	REVISER	APPD
1	△	Size changes	23/APR/21	KATE	JOHNNY
2	△	Add spray code	13/Jan/25	NICK	LEO

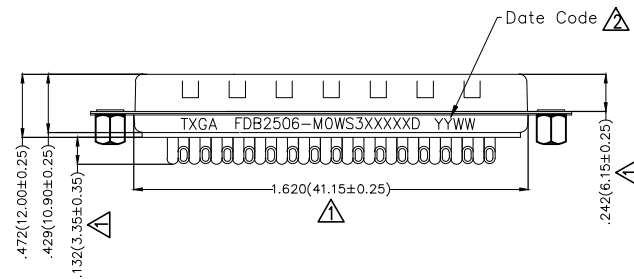
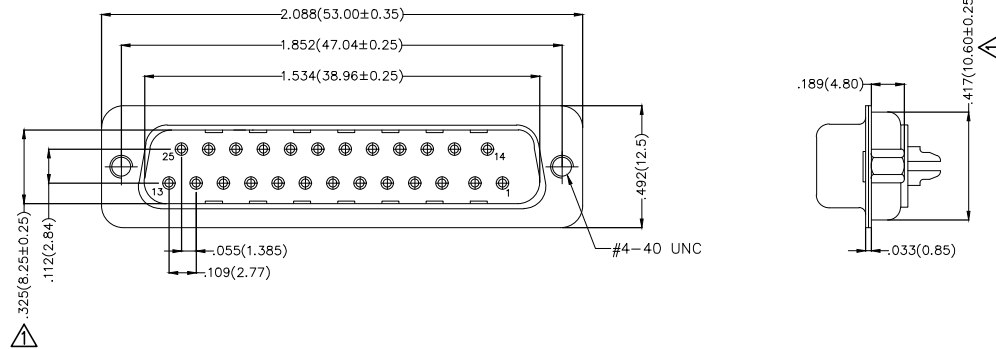
SPECIFICATIONS

Electrical

Current Rating: 3A AC(rms)/DC
Voltage Rating: 250V AC(rms)/DC
Contact Resistance: 25 mΩ Max
Insulation Resistance: 1000 MΩ Min
Withstanding Voltage: 500V AC r.m.s
Temperature Range-Operating: -55°C~+105°C

Material and plating

Housing: PBT UL 94V-0
Contact: Copper Alloy/
Selective gold in contact area, tin on tail
Shell: SPCC/ Nickel Plated
Screws: Copper Alloy/ Nickel Plated



Ordering Information

FDB 25 06 - MOWS 3 XX XX X D
1 2 3 4 5 6 7 8 9 10 11

1	Category FDB- D-SUB Connector	2	Circuits 25-25 Circuits	3	Distinction No. 06	4	Type MO-Male	5	Assembly Layout W-Welding Type	6	Entry Angle S-180° Vertical
7	Plating 3-Selective gold in contact area, tin on tail	8	Thickness of Plating 00-Gold Flash 03-3μ" Custom Plate Available	9	Color-Resin K6-Black U1-Blue	10	Packaging K-Tray L-Tube	11	Distinction Type D-D Type		

 THIRD ANGLE PROJECTION	GENERAL TOLERANCES (UNLESS SPECIFIED)		APPROVE BY FRANK	DATE 28/JUN/13	PART NO. FDB2506-MOWS3XXXXD	ITEM NO. FDB2506	 Leader Of Industry	
	DESIGN UNITS Inch (metric)	X.±.012(0.30) X.X±.008(0.20) X.XX±.006(0.15) X.XXX±.004(0.10)	X.±5' X.±2' .XX±1" .XXX±0.5'	CHECKED BY JACOB	DATE 28/JUN/13	TITLE D-SUB connector 25 Circuits 180° Vertical Male		REV 2
SCALE 5:1	SIZE A4		DRAWN BY CHERRY	DATE 28/JUN/13	THIS DRAWING CONTAINS INFORMATION THAT IS PROPRIETARY TO TXGA INDUSTRIAL ELECTRONICS(S.Z)CO.,LTD AND SHOULD NOT BE USED WITHOUT WRITTEN PERMISSION			

REV	LOCATIONS	DESCRIPTION	DATE	REVISER	APPD
1	△	Size changes	23/APR/21	KATE	JOHNNY
2	△	Add spray code	13/Jan/25	NICK	LEO

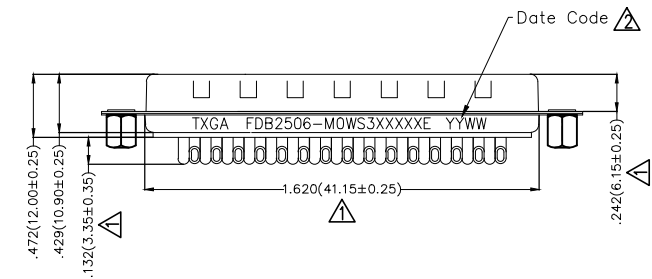
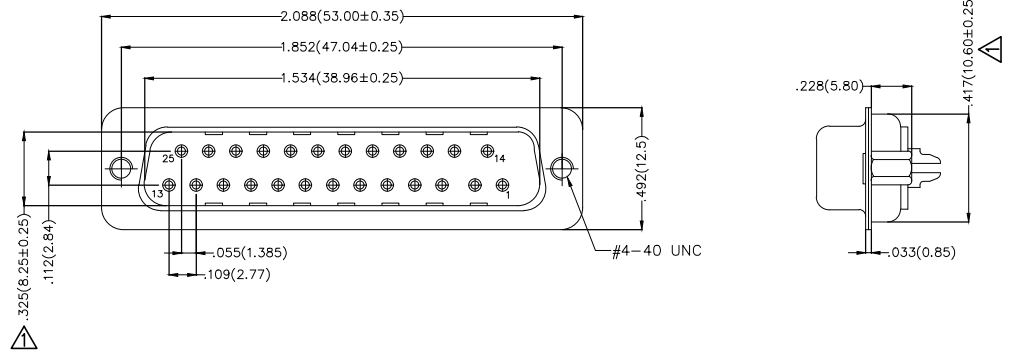
SPECIFICATIONS

Electrical

Current Rating: 3A AC(rms)/DC
Voltage Rating: 250V AC(rms)/DC
Contact Resistance: 25 mΩ Max
Insulation Resistance: 1000 MΩ Min
Withstanding Voltage: 500V AC r.m.s
Temperature Range-Operating: -55°C~+105°C

Material and plating


Housing: PBT UL 94V-0
Contact: Copper Alloy/
Selective gold in contact area, tin on tail
Shell: SPCC/ Nickel Plated
Screws: Copper Alloy/ Nickel Plated



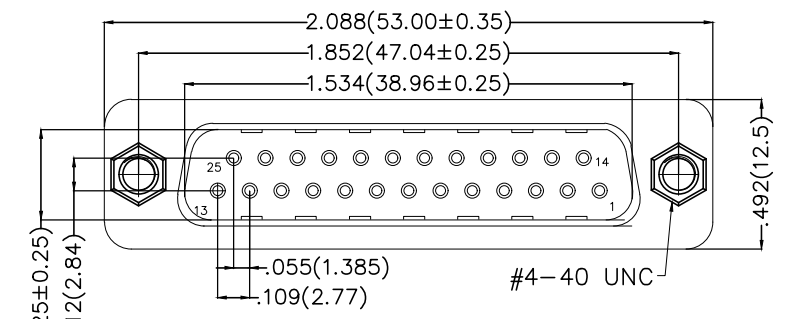
Ordering Information

FDB 25 06 - MOWS 3 XX XX X E
1 2 3 4 5 6 7 8 9 10 11

1	Category FDB- D-SUB Connector	2	Circuits 25-25 Circuits	3	Distinction No. 06	4	Type MO-Male	5	Assembly Layout W-Welding Type	6	Entry Angle S-180° Vertical
7	Plating 3-Selective gold in contact area, tin on tail	8	Thickness of Plating 00-Gold Flash 03-3μ" Custom Plate Available	9	Color-Resin K6-Black U1-Blue	10	Packaging K-Tray L-Tube	11	Distinction Type E-E Type		

THIRD ANGLE PROJECTION	GENERAL TOLERANCES (UNLESS SPECIFIED)		APPROVE BY FRANK	DATE 28/JUN/13	PART NO. FDB2506-MOWS3XXXXXE	ITEM NO. FDB2506	 Leader Of Industry	
	DESIGN UNITS Inch (metric)	X.±.012(0.30) X.X±.008(0.20) X.XX±.006(0.15) X.XXX±.004(0.10)	X.±5' X'±2' .XX'±1" .XXX'±0.5'	CHECKED BY JACOB	DATE 28/JUN/13	TITLE D-SUB connector 25 Circuits 180° Vertical Male		REV 2
SCALE 5:1	SIZE A4	DRAWN BY CHERRY		DATE 28/JUN/13	THIS DRAWING CONTAINS INFORMATION THAT IS PROPRIETARY TO TXGA INDUSTRIAL ELECTRONICS(S.Z)CO.,LTD AND SHOULD NOT BE USED WITHOUT WRITTEN PERMISSION			

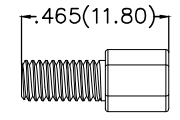
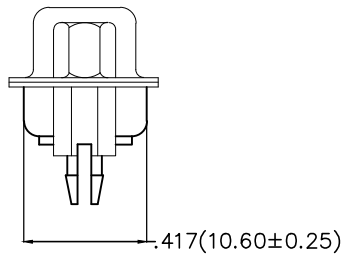
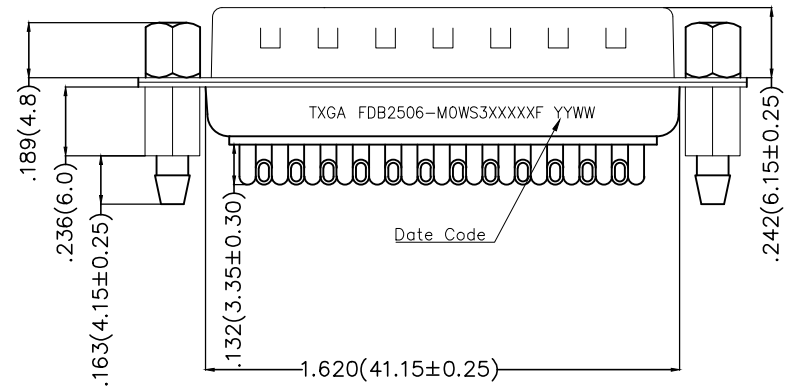
REV	LOCATIONS	DESCRIPTION	DATE	REVISER	APPD
1	△	Change screw material	12/May/25	NICK	LEO



SPECIFICATIONS

Electrical
 Current Rating: 3A AC(rms)/DC
 Voltage Rating: 250V AC(rms)/DC
 Contact Resistance: 25 mΩ Max
 Insulation Resistance: 1000 MΩ Min
 Withstanding Voltage: 500V AC r.m.s
 Temperature Range-Operating: -55°C~+105°C

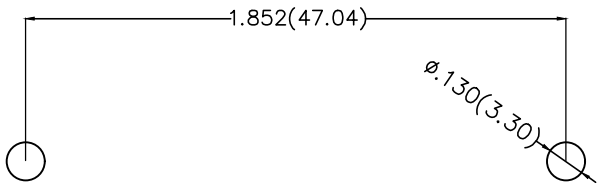
Material and plating
 Housing: PBT UL 94V-0
 Contact: Copper Alloy/
 Selective gold in contact area, tin on tail
 Shell: SPCC/ Front Nickel Plated; Back Tin Plated
 △ Screws: Carbon steel/ Nickel Plated
 Board Lock: Copper Alloy /Tin Plated



Screw length

Ordering Information

FDB 25 06 - M0 W S 3 XX XX K F
 1 2 3 4 5 6 7 8 9 10 11



Recommended P.C.Board Layout

1 Category FDB- D-SUB Connector	2 Circuits 25-25 Circuits	3 Distinction No. 06	4 Type M0-Male	5 Assembly Layout W-Welding Type	6 Entry Angle S-180° Vertical
7 Plating 3-Selective gold in contact area, tin on tail	8 Thickness of Plating 00-Gold Flash 03-3μ" Custom Plate Available	9 Color-Resin K6-Black U1-Blue	10 Packaging K-Tray	11 Distinction Type F-F Type	

 THIRD ANGLE PROJECTION	GENERAL TOLERANCES (UNLESS SPECIFIED)		APPROVE BY FRANK	DATE 28/JUN/13	PART NO. FDB2506-M0WS3XXXXKF	ITEM NO. FDB2506	 Building Technology Cornerstone
	DESIGN UNITS Inch (metric)	X.±.012(0.30)	X.±5'	CHECKED BY JACOB	DATE 28/JUN/13	TITLE D-SUB connector 25 Circuits 180° Vertical Male	
SCALE 5:1	SIZE A4	X.XX±.006(0.15)	.XX±1'	DRAWN BY CHERRY	DATE 28/JUN/13	THIS DRAWING CONTAINS INFORMATION THAT IS PROPRIETARY TO TXGA INDUSTRIAL ELECTRONICS(S.Z)CO.,LTD AND SHOULD NOT BE USED WITHOUT WRITTEN PERMISSION	
		X.XXX±.004(0.10)	.XXX±0.5'			REV 1	SHEET NO. 1/1