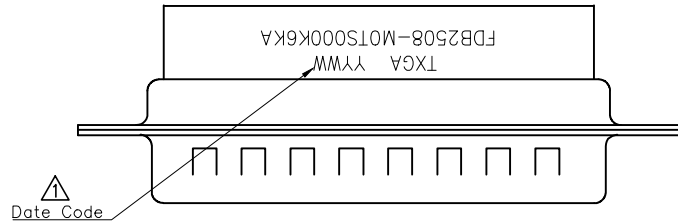


REV	LOCATIONS	DESCRIPTION	DATE	REVISER	APPD
1	▲	Add marking code	13/Jan/25	NICK	LEO



SPECIFICATIONS

Electrical

Insulation Resistance: 3000 MΩ MIN

Withstanding Voltage: 250V AC r.m.s

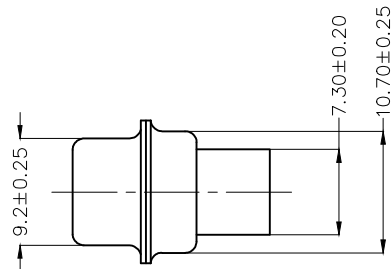
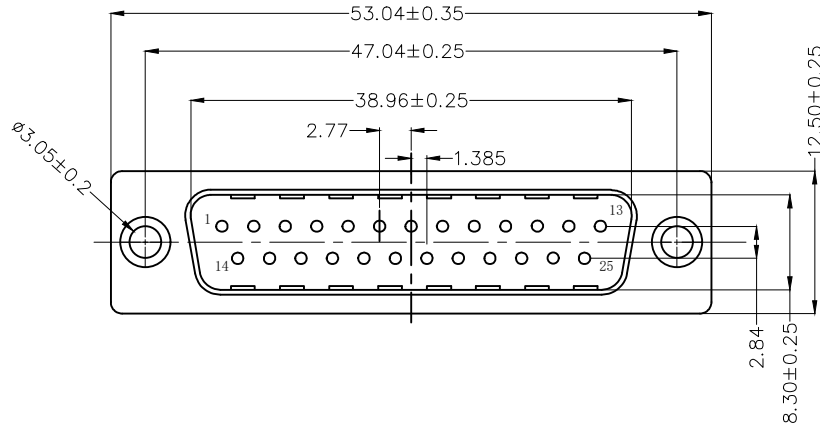
Temperature Range—Operating: -45°C~+85°C

Material and Plating

Housing: PBT (UL 94V-0) Black

Front Shell: Spcc/ Nickel plated

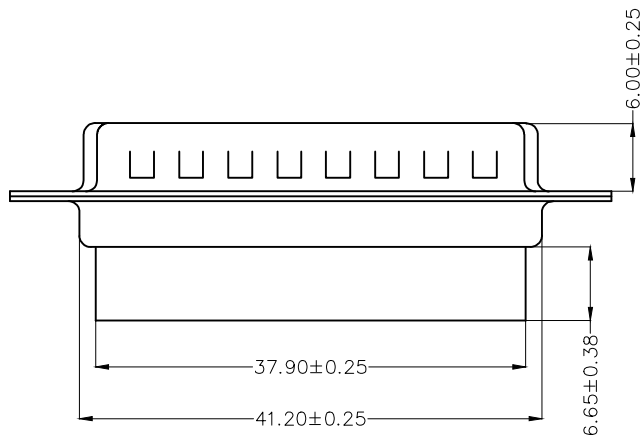
Back Shell: Spcc/ Tin plated



Ordering Information

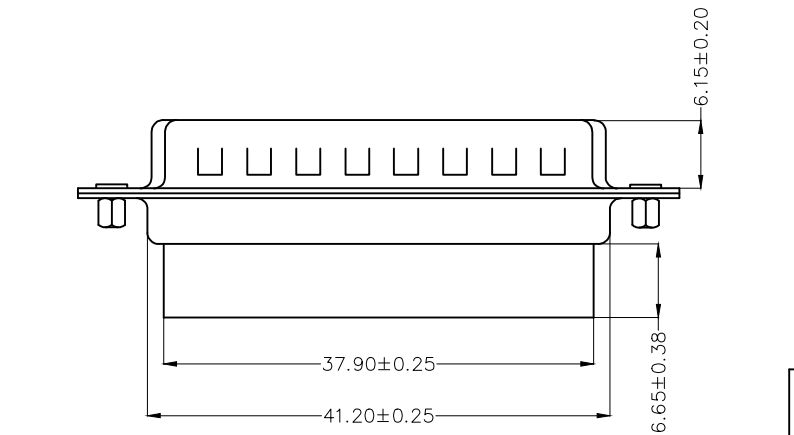
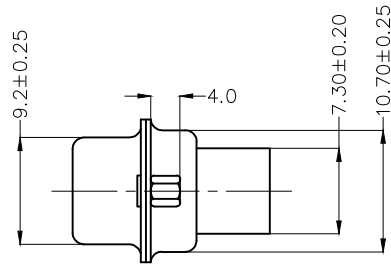
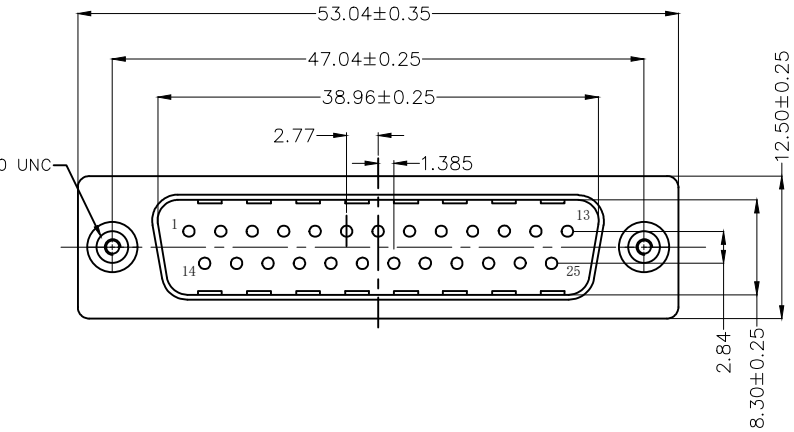
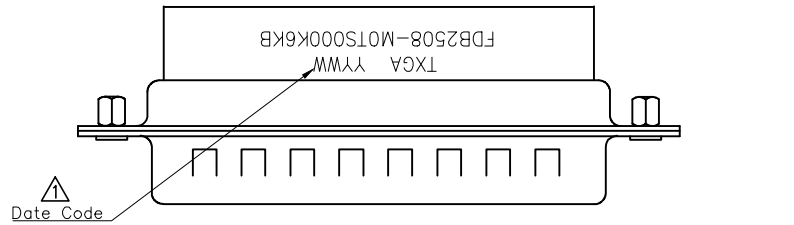
FDB 25 08 - M0 T S 0 00 K6 K A
 1 2 3 4 5 6 7 8 9

1	Category FDB- D-SUB	2	Circuits 25	3	Distinction No. 08	4	Type M0-Male	5	Assembly Layout T-Terminal type
6	Entry Angle S-180° Vertical	7	Color-Resin K6-Black	8	Packaging K-Tray	9	Distinction Type A-A Type		



 THIRD ANGLE PROJECTION	GENERAL TOLERANCES (UNLESS SPECIFIED)		APPROVE BY FRANK	DATE 14/JUN/22	PART NO. FDB2508-MOTS000K6KA	ITEM NO. FDB2508	 Building Technology Cornerstone	
	DESIGN UNITS Metric(mm)	X.±0.30	X.'±5'	CHECKED BY CHERRY	DATE 14/JUN/22	TITLE D-SUB Connector 25Circuits Terminal type Male		REV 1
SCALE 5:1	SIZE A4	X.XX±0.15	.XX'±1'	DRAWN BY MATT	DATE 14/JUN/22	THIS DRAWING CONTAINS INFORMATION THAT IS PROPRIETARY TO TXGA INDUSTRIAL ELECTRONICS(S.Z)CO.,LTD AND SHOULD NOT BE USED WITHOUT WRITTEN PERMISSION		

REV	LOCATIONS	DESCRIPTION	DATE	REVISER	APPD
1	▲	Add marking code	13/Jan/25	NICK	LEO



SPECIFICATIONS

Electrical
 Insulation Resistance: 3000 MΩ MIN
 Withstanding Voltage: 250V AC r.m.s
 Temperature Range—Operating: -45°C~+85°C
 Material and Plating
 Housing: PBT (UL 94V-0) Black
 Front Shell: Spcc/ Nickel plated
 Back Shell: Spcc/ Tin plated

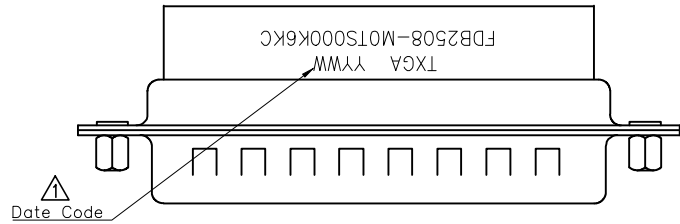
Ordering Information

FDB 25 08 — M0 T S 0 00 K6 K B
 1 2 3 4 5 6 7 8 9

1	Category FDB- D-SUB	2	Circuits 25	3	Distinction No. 08	4	Type M0-Male	5	Assembly Layout T-Terminal type
6	Entry Angle S-180° Vertical	7	Color-Resin K6-Black	8	Packaging K-Tray	9	Distinction Type B-B Type		

THIRD ANGLE PROJECTION	GENERAL TOLERANCES (UNLESS SPECIFIED)		APPROVE BY FRANK	DATE 14/JUN/22	PART NO. FDB2508-M0TS000K6KB	ITEM NO. FDB2508	 Building Technology Cornerstone
	DESIGN UNITS Metric(mm)	X.±0.30	X.'±5'	CHECKED BY CHERRY	DATE 14/JUN/22	TITLE D-SUB Connector 25Circuits Terminal type Male	
SCALE 5:1	SIZE A4	X.XX±0.15	.XX'±1'	DRAWN BY MATT	DATE 14/JUN/22	THIS DRAWING CONTAINS INFORMATION THAT IS PROPRIETARY TO TXGA INDUSTRIAL ELECTRONICS(S.Z)CO.,LTD AND SHOULD NOT BE USED WITHOUT WRITTEN PERMISSION	
						REV 1	SHEET NO. 1/1

REV	LOCATIONS	DESCRIPTION	DATE	REVISER	APPD
1	△	Add marking code	13/Jan/25	NICK	LEO



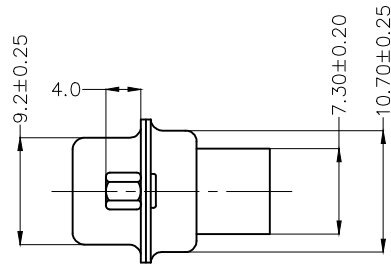
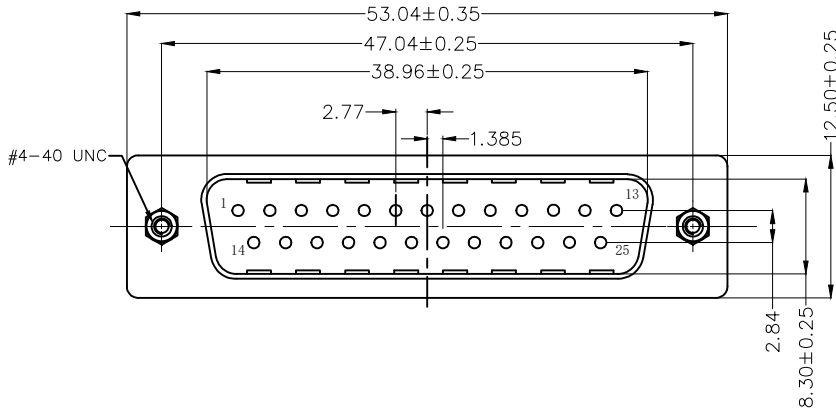
SPECIFICATIONS

Electrical

Insulation Resistance: 3000 MΩ MIN
 Withstanding Voltage: 250V AC r.m.s
 Temperature Range—Operating: -45°C~+85°C

Material and Plating

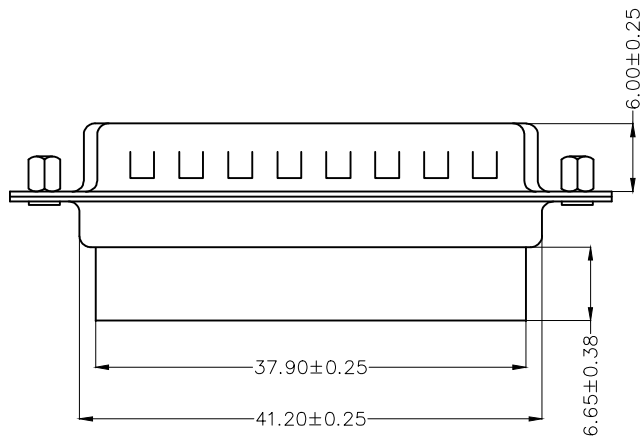
Housing: PBT (UL 94V-0) Black
 Front Shell: Spcc/ Nickel plated
 Back Shell: Spcc/ Tin plated



Ordering Information

FDB 25 08 - M0 T S 0 00 K6 K C
 1 2 3 4 5 6 7 8 9

1	Category FDB- D-SUB	2	Circuits 25	3	Distinction No. 08	4	Type M0-Male	5	Assembly Layout T-Terminal type
6	Entry Angle S-180° Vertical	7	Color-Resin K6-Black	8	Packaging K-Tray	9	Distinction Type C-C Type		



 THIRD ANGLE PROJECTION	GENERAL TOLERANCES (UNLESS SPECIFIED)		APPROVE BY FRANK	DATE 14/JUN/22	PART NO. FDB2508-M0TS000K6KC	ITEM NO. FDB2508	 Building Technology Cornerstone
	DESIGN UNITS Metric(mm)	X.±0.30	X.'±5'	CHECKED BY CHERRY	DATE 14/JUN/22	TITLE D-SUB Connector 25Circuits Terminal type Male	
SCALE 5:1	SIZE A4	X.XX±0.15	.XX'±1'	DRAWN BY MATT	DATE 14/JUN/22	THIS DRAWING CONTAINS INFORMATION THAT IS PROPRIETARY TO TXGA INDUSTRIAL ELECTRONICS(S.Z)CO.,LTD AND SHOULD NOT BE USED WITHOUT WRITTEN PERMISSION	
		X.XXX±0.10	.XXX'±0.5'			REV 1	SHEET NO. 1/1