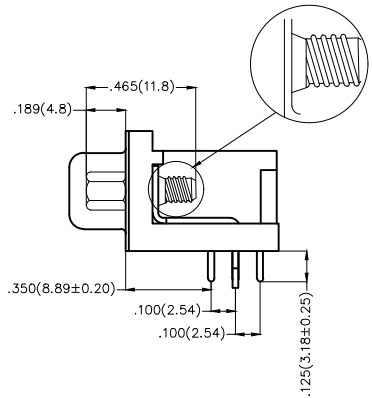
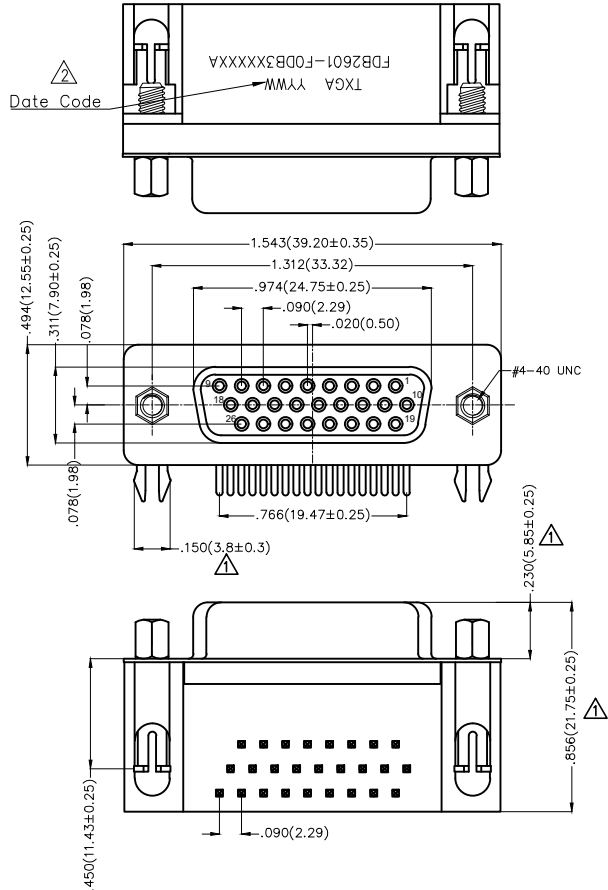


REV	LOCATIONS	DESCRIPTION	DATE	REVISER	APPD
1		Update dimensions	14/JAN/25	MATT	LEO
2		Add marking code	15/Jan/25	NICK	LEO



SPECIFICATIONS

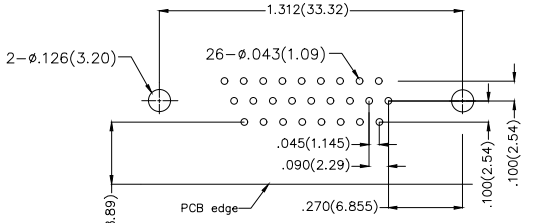
Electrical
 Current Rating: 3A AC(rms)/DC
 Voltage Rating: 250V AC(rms)/DC
 Contact Resistance: 25 mΩ Max
 Insulation Resistance: 1000 MΩ Min
 Withstanding Voltage: 500V AC r.m.s
 Temperature Range—Operating: -55°C~+105°C

Material and plating
 Housing: PBT UL 94V-0
 Contact: Copper Alloy/
 Selective gold in contact area, tin on tail
 Shell: SPCC/ Nickel Plated
 Board Lock: Copper Alloy/ Tin Plated
 Screws: Copper Alloy/ Nickel Plated

Ordering Information

FDB 26 01 - F0 D B 3 XX XX X A
 1 2 3 4 5 6 7 8 9 10 11

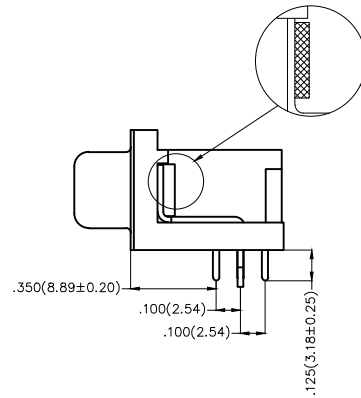
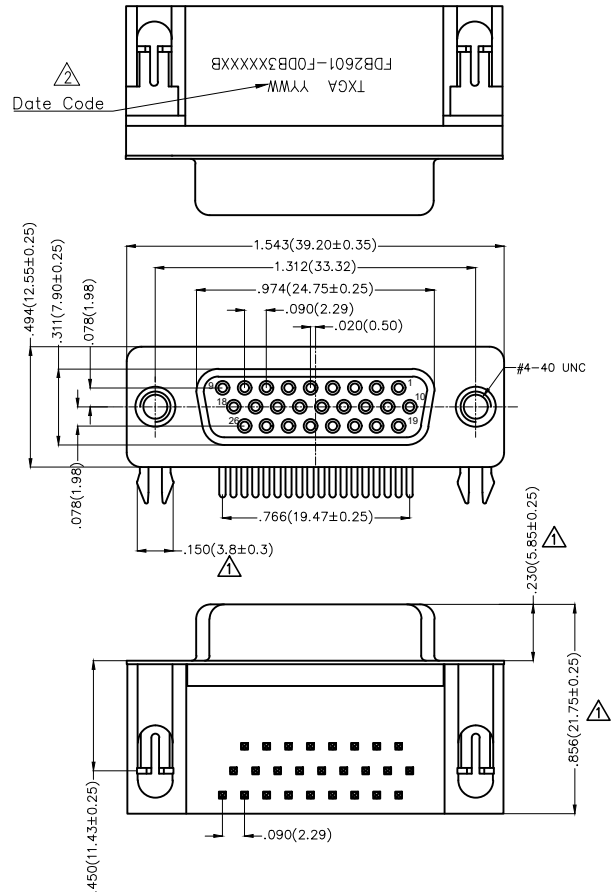
1	Category FDB- D-SUB Connector	2	Circuits 26-26 Circuits	3	Distinction No. 01	4	Type F0-Female	5	Assembly Layout D-DIP	6	Entry Angle B-90° Angle
7	Plating 3-Selective gold in contact area, tin on tail	8	Thickness of Plating 00-Gold Flash 03-3μ" Custom Plate Available	9	Color-Resin K6-Black U1-Blue	10	Packaging K-Tray	11	Distinction Type A-A Type		



Recommended P.C.Board Layout

	GENERAL TOLERANCES (UNLESS SPECIFIED)		APPROVE BY FRANK	DATE 28/JUN/13	PART NO. FDB2601-F0DB3XXXXXA	ITEM NO. FDB2601	
	DESIGN UNITS Inch (metric)	X.±.012(0.30) X.X±.008(0.20) X.XX±.006(0.15) X.XXX±.004(0.10)	X.±5° .X±2° .XX±1° .XXX±0.5°	CHECKED BY JACOB	DATE 28/JUN/13	TITLE D-SUB connector 26 Circuits 90° Angle Female	
SCALE 5:1	SIZE A4		DRAWN BY CHERRY	DATE 28/JUN/13	THIS DRAWING CONTAINS INFORMATION THAT IS PROPRIETARY TO TXGA INDUSTRIAL ELECTRONICS(S.Z)CO.,LTD AND SHOULD NOT BE USED WITHOUT WRITTEN PERMISSION		

REV	LOCATIONS	DESCRIPTION	DATE	REVISER	APPD
1	△	Update dimensions	14/JAN/25	MATT	LEO
2	△	Add marking code	15/Jan/25	NICK	LEO



SPECIFICATIONS

Electrical

Current Rating: 3A AC(rms)/DC
Voltage Rating: 250V AC(rms)/DC
Contact Resistance: 25 mΩ Max
Insulation Resistance: 1000 MΩ Min
Withstanding Voltage: 500V AC r.m.s
Temperature Range—Operating: -55°C~+105°C

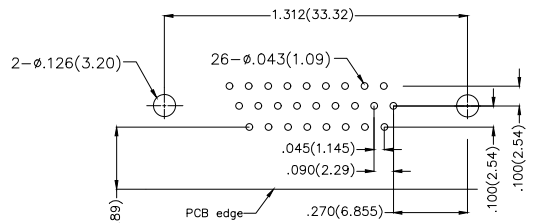
Material and plating

Housing: PBT UL 94V-0
Contact: Copper Alloy/
Selective gold in contact area, tin on tail
Shell: SPCC/ Nickel Plated
Board Lock: Copper Alloy/ Tin Plated

Ordering Information

FDB 26 01 - F0 D B 3 XX XX X B
1 2 3 4 5 6 7 8 9 10 11

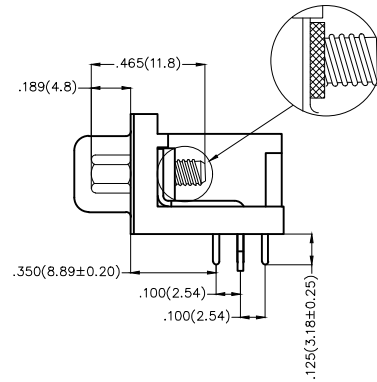
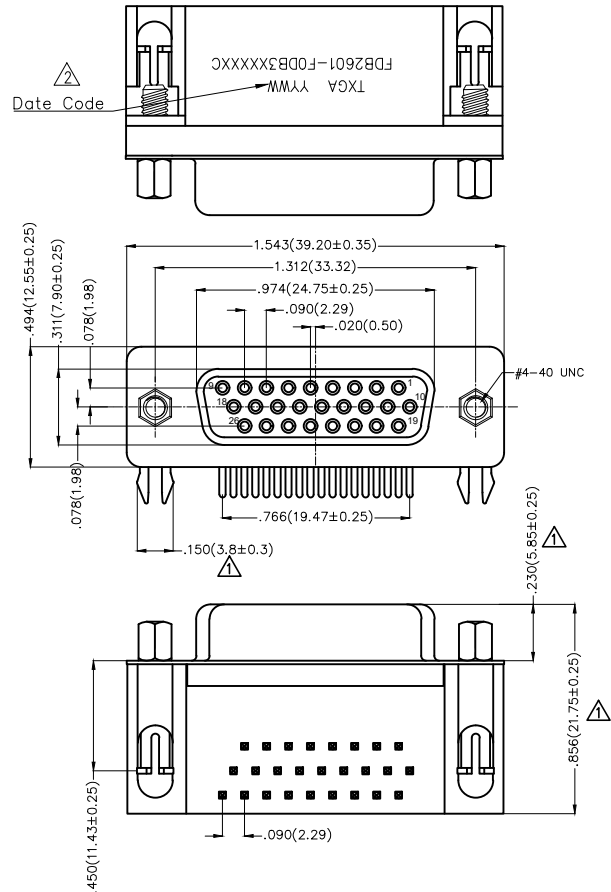
1	Category FDB- D-SUB Connector	2	Circuits 26-26 Circuits	3	Distinction No. 01	4	Type F0-Female	5	Assembly Layout D-DIP	6	Entry Angle B-90° Angle
7	Plating 3-Selective gold in contact area, tin on tail	8	Thickness of Plating 00-Gold Flash 03-3μ" Custom Plate Available	9	Color-Resin K6-Black U1-Blue	10	Packaging K-Tray	11	Distinction Type B-B Type		



Recommended P.C.Board Layout

 THIRD ANGLE PROJECTION	GENERAL TOLERANCES (UNLESS SPECIFIED)		APPROVE BY FRANK	DATE 28/JUN/13	PART NO. FDB2601-F0DB3XXXXXB	ITEM NO. FDB2601	 Building Technology Cornerstone	
	DESIGN UNITS Inch (metric)	X.±.012(0.30) X.X±.008(0.20) X.XX±.006(0.15) X.XXX±.004(0.10)	X.±5" .X±2" .XX±1" .XXX±0.5"	CHECKED BY JACOB	DATE 28/JUN/13	TITLE D-SUB connector 26 Circuits 90° Angle Female		
SCALE 5:1	SIZE A4		DRAWN BY CHERRY	DATE 28/JUN/13	THIS DRAWING CONTAINS INFORMATION THAT IS PROPRIETARY TO TXGA INDUSTRIAL ELECTRONICS(S.Z)CO.,LTD AND SHOULD NOT BE USED WITHOUT WRITTEN PERMISSION		REV 2	SHEET NO. 1/1

REV	LOCATIONS	DESCRIPTION	DATE	REVISER	APPD
1	△	Size changes	04/JUN/21	KATE	CHERRY
2	△	Add marking code	15/Jan/25	NICK	LEO



SPECIFICATIONS

Electrical

Current Rating: 3A AC(rms)/DC
Voltage Rating: 250V AC(rms)/DC
Contact Resistance: 25 mΩ Max
Insulation Resistance: 1000 MΩ Min
Withstanding Voltage: 500V AC r.m.s
Temperature Range—Operating: -55°C~+105°C

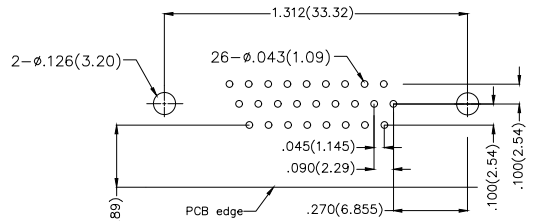
Material and plating

Housing: PBT UL 94V-0
Contact: Copper Alloy/
Selective gold in contact area, tin on tail
Shell: SPCC/ Nickel Plated
Board Lock: Copper Alloy/ Tin Plated
Screws: Copper Alloy/ Nickel Plated

Ordering Information

FDB 26 01 - F0 D B 3 XX XX X C
1 2 3 4 5 6 7 8 9 10 11

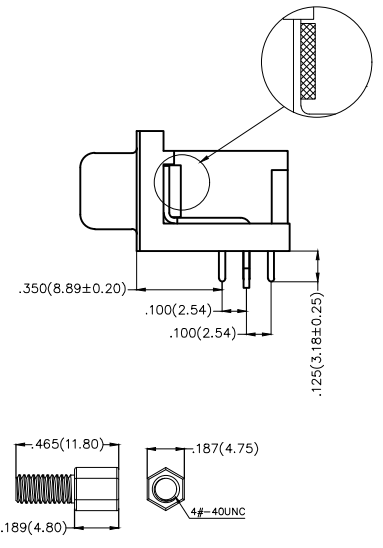
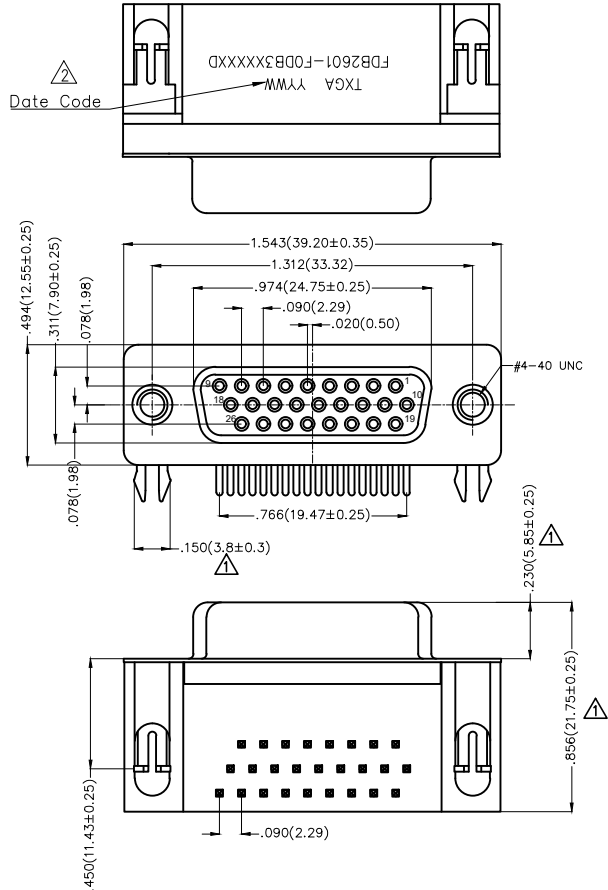
1	Category FDB- D-SUB Connector	2	Circuits 26-26 Circuits	3	Distinction No. 01	4	Type F0-Female	5	Assembly Layout D-DIP	6	Entry Angle B-90° Angle
7	Plating 3-Selective gold in contact area, tin on tail	8	Thickness of Plating 00-Gold Flash 03-3μ" Custom Plate Available	9	Color-Resin K6-Black U1-Blue	10	Packaging K-Tray	11	Distinction Type C-C Type		



Recommended P.C.Board Layout

 THIRD ANGLE PROJECTION	GENERAL TOLERANCES (UNLESS SPECIFIED)		APPROVE BY FRANK	DATE 28/JUN/13	PART NO. FDB2601-F0DB3XXXXXC	ITEM NO. FDB2601	 Building Technology Cornerstone	
	DESIGN UNITS Inch (metric)	X.±.012(0.30) X.X±.008(0.20) X.XX±.006(0.15) X.XXX±.004(0.10)	X.±5' .X±2' .XX±1' .XXX±0.5'	CHECKED BY JACOB	DATE 28/JUN/13	TITLE D-SUB connector 26 Circuits 90° Angle Female		REV 2
SCALE 5:1	SIZE A4		DRAWN BY CHERRY	DATE 28/JUN/13	THIS DRAWING CONTAINS INFORMATION THAT IS PROPRIETARY TO TXGA INDUSTRIAL ELECTRONICS(S.Z)CO.,LTD AND SHOULD NOT BE USED WITHOUT WRITTEN PERMISSION			

REV	LOCATIONS	DESCRIPTION	DATE	REVISER	APPD
1		Update dimensions	14/JAN/25	MATT	LEO
2		Add marking code	15/Jan/25	NICK	LEO



Screw (2pcs)

SPECIFICATIONS

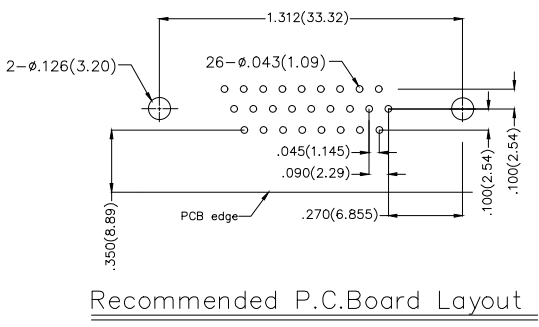
Electrical
 Current Rating: 3A AC(rms)/DC
 Voltage Rating: 250V AC(rms)/DC
 Contact Resistance: 25 mΩ Max
 Insulation Resistance: 1000 MΩ Min
 Withstanding Voltage: 500V AC r.m.s
 Temperature Range—Operating: -55°C~+105°C

Material and plating
 Housing: PBT UL 94V-0
 Contact: Copper Alloy/
 Selective gold in contact area, tin on tail
 Shell: SPCC/ Nickel Plated
 Board Lock: Copper Alloy/ Tin Plated
 Screws: Copper Alloy/ Nickel Plated

Ordering Information

FDB 26 01 - F0 D B 3 XX XX X D
 1 2 3 4 5 6 7 8 9 10 11

1	Category FDB- D-SUB Connector	2	Circuits 26-26 Circuits	3	Distinction No. 01	4	Type F0-Female	5	Assembly Layout D-DIP	6	Entry Angle B-90° Angle
7	Plating 3-Selective gold in contact area, tin on tail	8	Thickness of Plating 00-Gold Flash 03-3μ" Custom Plate Available	9	Color-Resin K6-Black U1-Blue	10	Packaging K-Tray	11	Distinction Type D-D Type		



Recommended P.C.Board Layout

	GENERAL TOLERANCES (UNLESS SPECIFIED)		APPROVE BY FRANK	DATE 28/JUN/13	PART NO. FDB2601-F0DB3XXXXX	ITEM NO. FDB2601		
	DESIGN UNITS Inch (metric)	X.±.012(0.30) X.X±.008(0.20) X.XX±.006(0.15) X.XXX±.004(0.10)	X.±5' .X±2' .XX±1' .XXX±0.5'	CHECKED BY JACOB	DATE 28/JUN/13	TITLE D-SUB connector 26 Circuits 90° Angle Female		Building Technology Cornerstone
SCALE 5:1	SIZE A4		DRAWN BY CHERRY	DATE 28/JUN/13	THIS DRAWING CONTAINS INFORMATION THAT IS PROPRIETARY TO TXGA INDUSTRIAL ELECTRONICS(S.Z)CO.,LTD AND SHOULD NOT BE USED WITHOUT WRITTEN PERMISSION		REV 2	SHEET NO. 1/1