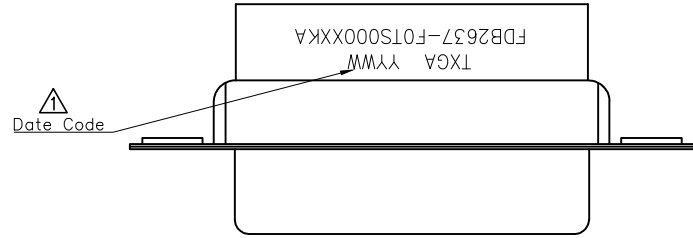


REV	LOCATIONS	DESCRIPTION	DATE	REVISER	APPD
1	△	Add marking code	13/Jan/25	NICK	LEO



### SPECIFICATIONS

#### Electrical

Current Rating: 3A AC(rms)/DC  
Voltage Rating: 250V AC(rms)/DC  
Contact Resistance: 30 mΩ Max  
Insulation Resistance: 1000 MΩ MIN  
Withstanding Voltage: 500V AC r.m.s  
Temperature Range-Operating: -55°C~+105°C

#### Material and Plating

Housing: PBT (UL 94V-0)  
Front Shell: Spcc/ Nickel plated  
Back Shell: Spcc/ Tin plated

A

A

B

B

C

C

D

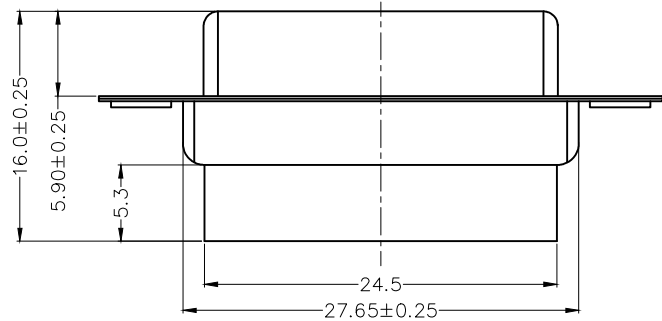
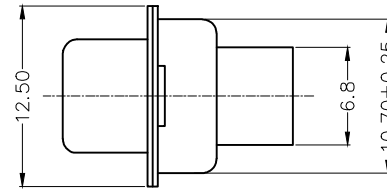
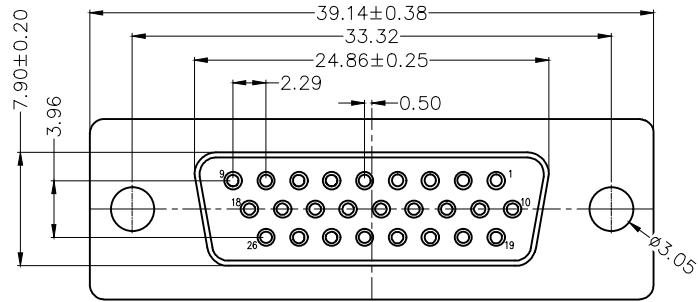
D

E

E

F

F



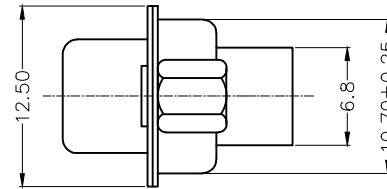
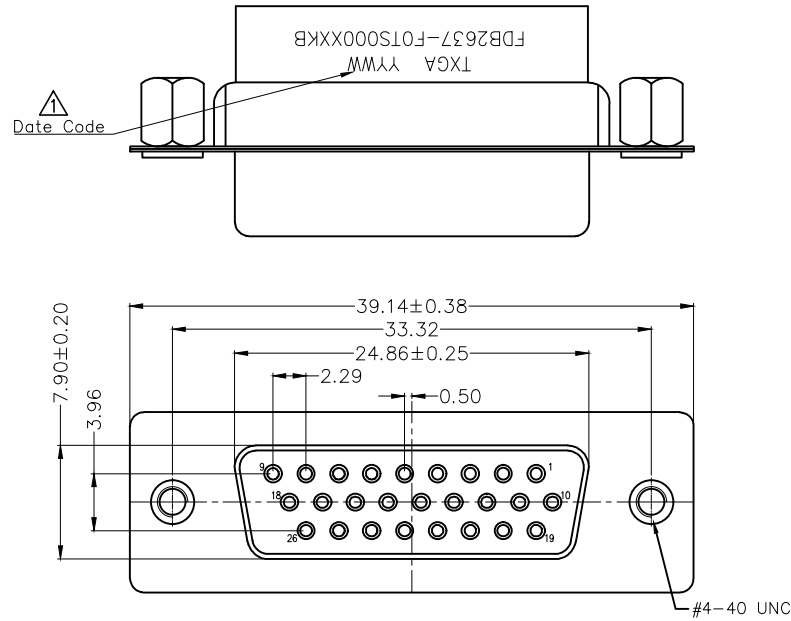
### Ordering Information

FDB 26 37 - F0 T S 0 00 XX K A  
1 2 3 4 5 6 7 8 9

1	Category FDB- D-SUB	2	Circuits 26	3	Distinction No. 37	4	Type F0-Female	5	Assembly Layout T-Terminal type
6	Entry Angle S-180° Vertical	7	Color-Resin K6-Black U1-Blue	8	Packaging K-Tray	9	Distinction Type A-A Type		

 THIRD ANGLE PROJECTION	GENERAL TOLERANCES (UNLESS SPECIFIED)		APPROVE BY LEO	DATE 29/JAN/24	PART NO. FDB2637-F0TS000XXKA	ITEM NO. FDB2637	 Building Technology Cornerstone
	DESIGN UNITS METRIC	X. ±0.30	X.' ±5'	CHECKED BY GISELLE	DATE 29/JAN/24	TITLE D-SUB Connector 26Circuits Terminal type Female	
SCALE 5:1	SIZE A4	X.XX ±0.15	X.XX' ±1'	DRAWN BY FAY	DATE 29/JAN/24	THIS DRAWING CONTAINS INFORMATION THAT IS PROPRIETARY TO TXGA INDUSTRIAL ELECTRONICS(S.Z)CO.,LTD AND SHOULD NOT BE USED WITHOUT WRITTEN PERMISSION	
		X.XXX ±0.10	X.XXX' ±0.5'			REV 1	SHEET NO. 1/1

REV	LOCATIONS	DESCRIPTION	DATE	REVSER	APPD
1	△	Add marking code	13/Jan/25	NICK	LEO



### SPECIFICATIONS

#### Electrical

Current Rating: 3A AC(rms)/DC  
Voltage Rating: 250V AC(rms)/DC  
Contact Resistance: 30 mΩ Max  
Insulation Resistance: 1000 MΩ MIN  
Withstanding Voltage: 500V AC r.m.s  
Temperature Range—Operating: -55°C~+105°C

#### Material and Plating

Housing: PBT (UL 94V-0)  
Front Shell: Spcc/ Nickel plated  
Back Shell: Spcc/ Tin plated  
Nut: Copper alloy/ Nickel plated

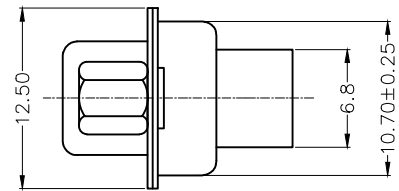
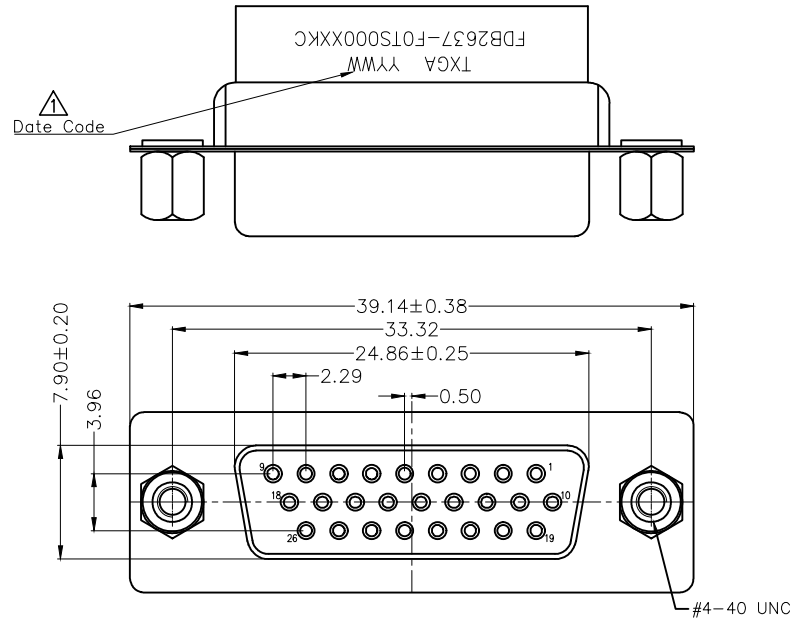
### Ordering Information

FDB 26 37 - F0 T S 0 00 XX K B  
1 2 3 4 5 6 7 8 9

1	Category FDB- D-SUB	2	Circuits 26	3	Distinction No. 37	4	Type F0-Female	5	Assembly Layout T-Terminal type
6	Entry Angle S-180° Vertical	7	Color-Resin K6-Black U1-Blue	8	Packaging K-Tray	9	Distinction Type B-B Type		

 THIRD ANGLE PROJECTION	GENERAL TOLERANCES (UNLESS SPECIFIED)		APPROVE BY LEO	DATE 29/JAN/24	PART NO. FDB2637-F0TS000XXKB	ITEM NO. FDB2637	 Building Technology Cornerstone
	DESIGN UNITS METRIC	X. ±0.30	X.' ±5'	CHECKED BY GISELLE	DATE 29/JAN/24	TITLE D-SUB Connector 26Circuits Terminal type Female	
SCALE 5:1	SIZE A4	X.XX ±0.15	X.XX' ±1'	DRAWN BY FAY	DATE 29/JAN/24	THIS DRAWING CONTAINS INFORMATION THAT IS PROPRIETARY TO TXGA INDUSTRIAL ELECTRONICS(S.Z)CO.,LTD AND SHOULD NOT BE USED WITHOUT WRITTEN PERMISSION	
		X.XXX ±0.10	X.XXX' ±0.5'			REV 1	SHEET NO. 1/1

REV	LOCATIONS	DESCRIPTION	DATE	REVSER	APPD
1	△	Add marking code	13/Jan/25	NICK	LEO



**SPECIFICATIONS**

**Electrical**

Current Rating: 3A AC(rms)/DC  
Voltage Rating: 250V AC(rms)/DC  
Contact Resistance: 30 mΩ Max  
Insulation Resistance: 1000 MΩ MIN  
Withstanding Voltage: 500V AC r.m.s  
Temperature Range—Operating: -55°C~+105°C

**Material and Plating**

Housing: PBT (UL 94V-0)  
Front Shell: Spcc/ Nickel plated  
Back Shell: Spcc/ Tin plated  
Nut: Copper alloy/ Nickel plated

**Ordering Information**

FDB 26 37 - F0 T S 0 00 XX K C  
1 2 3 4 5 6 7 8 9

1	Category FDB- D-SUB	2	Circuits 26	3	Distinction No. 37	4	Type F0-Female	5	Assembly Layout T-Terminal type
6	Entry Angle S-180° Vertical	7	Color-Resin K6-Black U1-Blue	8	Packaging K-Tray	9	Distinction Type C-C Type		

 THIRD ANGLE PROJECTION	GENERAL TOLERANCES (UNLESS SPECIFIED)		APPROVE BY LEO	DATE 29/JAN/24	PART NO. FDB2637-F0TS000XXKC	ITEM NO. FDB2637	 Building Technology Cornerstone
	DESIGN UNITS METRIC	X. ±0.30	X.' ±5'	CHECKED BY GISELLE	DATE 29/JAN/24	TITLE D-SUB Connector 26Circuits Terminal type Female	
SCALE 5:1	SIZE A4	X.XX ±0.15	X.XX' ±1'	DRAWN BY FAY	DATE 29/JAN/24	THIS DRAWING CONTAINS INFORMATION THAT IS PROPRIETARY TO TXGA INDUSTRIAL ELECTRONICS(S.Z)CO.,LTD AND SHOULD NOT BE USED WITHOUT WRITTEN PERMISSION	
		X.XXX ±0.10	X.XXX' ±0.5'			REV 1	SHEET NO. 1/1