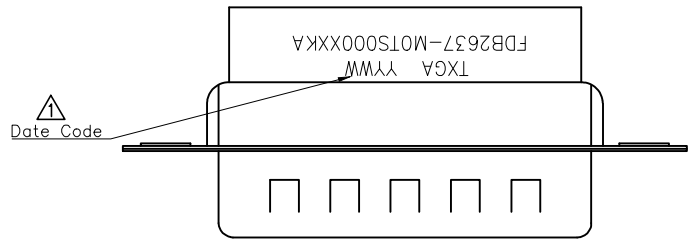


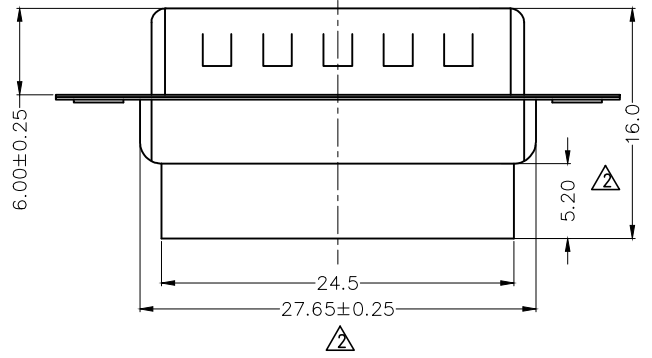
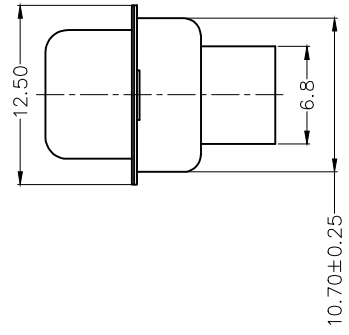
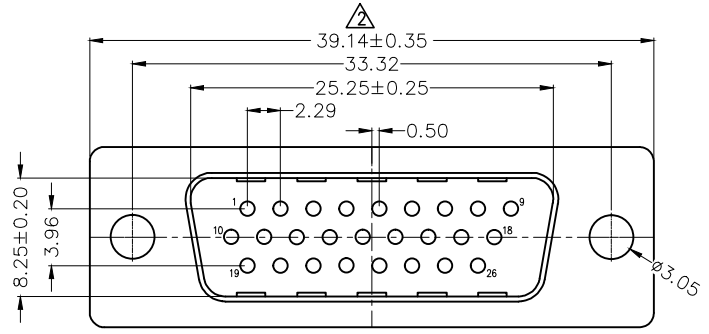
REV	LOCATIONS	DESCRIPTION	DATE	REVISER	APPD
1	△	Add marking code	13/Jan/25	NICK	LEO
2	△	Update dimensions and tolerances	12/Mar/25	NICK	LEO



SPECIFICATIONS

Electrical
 Current Rating: 3A AC(rms)/DC
 Voltage Rating: 250V AC(rms)/DC
 Contact Resistance: 30 mΩ Max
 Insulation Resistance: 1000 MΩ MIN
 Withstanding Voltage: 500V AC r.m.s
 Temperature Range—Operating: -55°C~+105°C

Material and Plating
 Housing: PBT (UL 94V-0)
 Front Shell: Spcc/ Nickel plated
 Back Shell: Spcc/ Tin plated



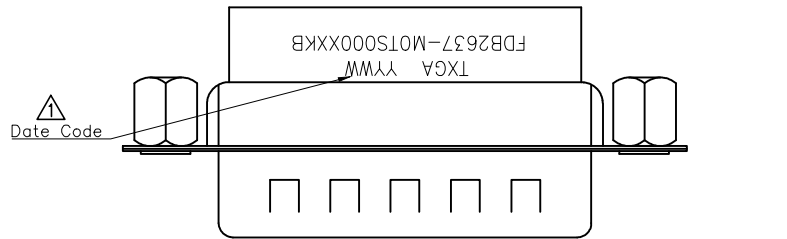
Ordering Information

FDB 26 37 - M0 T S 0 00 XX K A
 1 2 3 4 5 6 7 8 9

1	Category FDB- D-SUB	2	Circuits 26	3	Distinction No. 37	4	Type M0-Male	5	Assembly Layout T-Terminal type
6	Entry Angle S-180° Vertical	7	Color-Resin K6-Black U1-Blue	8	Packaging K-Tray	9	Distinction Type A-A Type		

 THIRD ANGLE PROJECTION	GENERAL TOLERANCES (UNLESS SPECIFIED)		APPROVE BY LEO	DATE 29/JAN/24	PART NO. FDB2637-MOTS000XXKA	ITEM NO. FDB2637	 Building Technology Cornerstone
	DESIGN UNITS METRIC	X. ±0.30	X.' ±5'	CHECKED BY GISELLE	DATE 29/JAN/24	TITLE D-SUB Connector 26Circuits Terminal type Male	
SCALE 5:1	SIZE A4	X.XX ±0.15	X.XX' ±1'	DRAWN BY FAY	DATE 29/JAN/24	THIS DRAWING CONTAINS INFORMATION THAT IS PROPRIETARY TO TXGA INDUSTRIAL ELECTRONICS(S.Z)CO.,LTD AND SHOULD NOT BE USED WITHOUT WRITTEN PERMISSION	
		X.XXX ±0.10	X.XXX' ±0.5'			REV 2	SHEET NO. 1/1

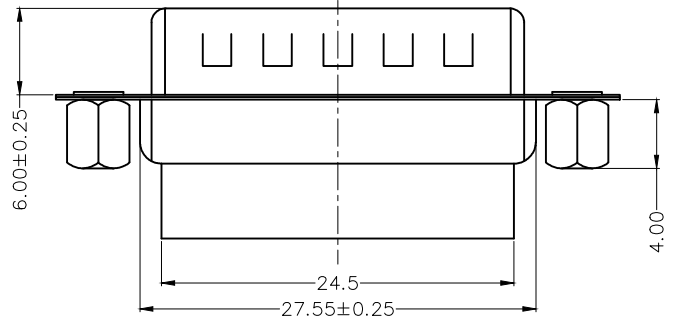
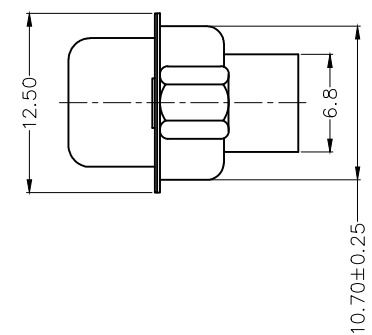
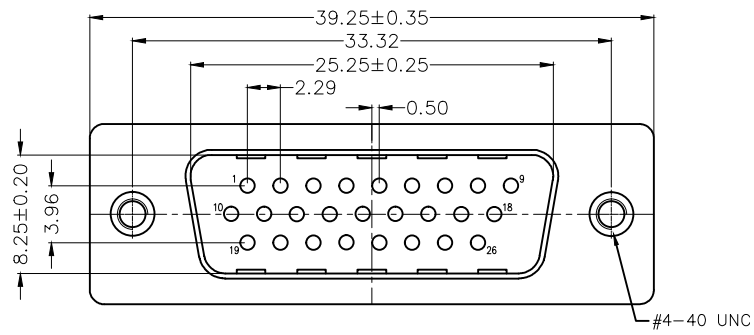
REV	LOCATIONS	DESCRIPTION	DATE	REVISED	APPD
1	△	Add marking code	13/Jan/25	NICK	LEO



SPECIFICATIONS

Electrical
 Current Rating: 3A AC(rms)/DC
 Voltage Rating: 250V AC(rms)/DC
 Contact Resistance: 30 mΩ Max
 Insulation Resistance: 1000 MΩ MIN
 Withstanding Voltage: 500V AC r.m.s
 Temperature Range—Operating: -55°C~+105°C

Material and Plating
 Housing: PBT (UL 94V-0)
 Front Shell: Spcc/ Nickel plated
 Back Shell: Spcc/ Tin plated
 Nut: Copper alloy/ Nickel plated



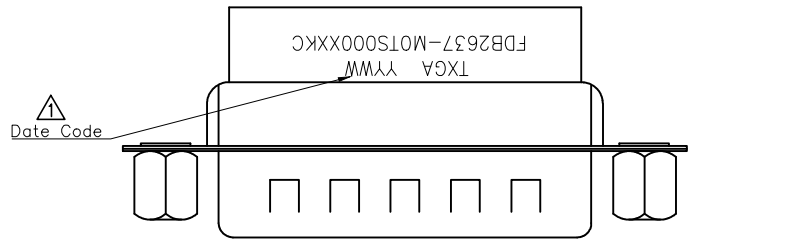
Ordering Information

FDB 26 37 - M0 T S 0 00 XX K B
 1 2 3 4 5 6 7 8 9

1	Category FDB- D-SUB	2	Circuits 26	3	Distinction No. 37	4	Type M0-Male	5	Assembly Layout T-Terminal type
6	Entry Angle S-180° Vertical	7	Color-Resin K6-Black U1-Blue	8	Packaging K-Tray	9	Distinction Type B-B Type		

 THIRD ANGLE PROJECTION DESIGN UNITS METRIC SCALE 5:1 SIZE A4	GENERAL TOLERANCES (UNLESS SPECIFIED)		APPROVE BY LEO	DATE 29/JAN/24	PART NO. FDB2637-MOTS000XXKB	ITEM NO. FDB2637	 Building Technology Cornerstone	
	X. ±0.30	X.' ±5'	CHECKED BY GISELLE	DATE 29/JAN/24	TITLE D-SUB Connector 26Circuits Terminal type Male			REV 1
	X.X ±0.20	X.X' ±2'	DRAWN BY FAY	DATE 29/JAN/24	THIS DRAWING CONTAINS INFORMATION THAT IS PROPRIETARY TO TXGA INDUSTRIAL ELECTRONICS(S.Z)CO.,LTD AND SHOULD NOT BE USED WITHOUT WRITTEN PERMISSION			
	X.XX ±0.15	X.XX' ±1'						
X.XXX ±0.10	X.XXX' ±0.5'							

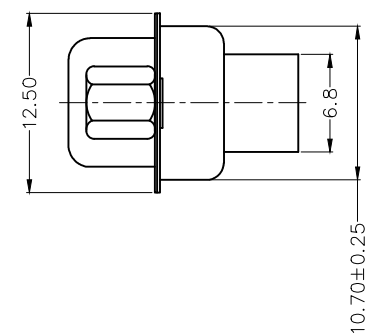
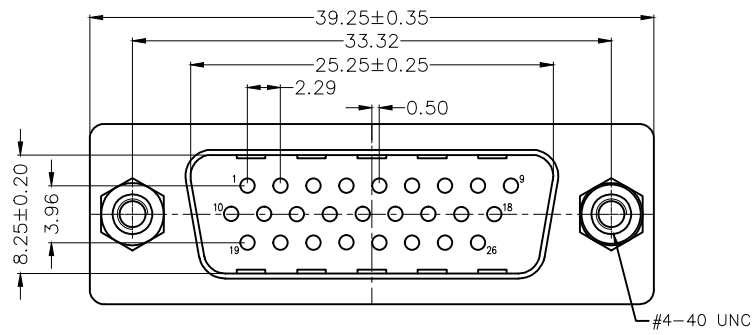
REV	LOCATIONS	DESCRIPTION	DATE	REVSER	APPD
1	△	Add marking code	13/Jan/25	NICK	LEO



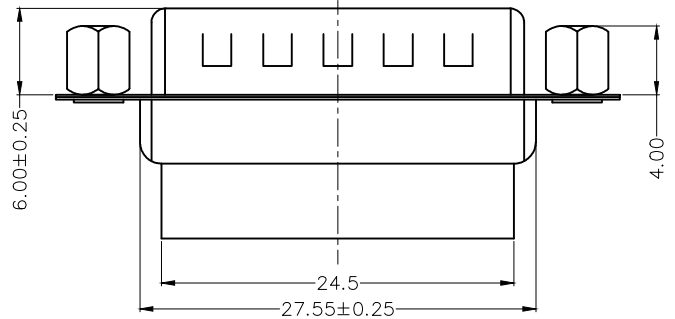
SPECIFICATIONS

Electrical
 Current Rating: 3A AC(rms)/DC
 Voltage Rating: 250V AC(rms)/DC
 Contact Resistance: 30 mΩ Max
 Insulation Resistance: 1000 MΩ MIN
 Withstanding Voltage: 500V AC r.m.s
 Temperature Range—Operating: -55°C~+105°C

Material and Plating
 Housing: PBT (UL 94V-0)
 Front Shell: Spcc/ Nickel plated
 Back Shell: Spcc/ Tin plated
 Nut: Copper alloy/ Nickel plated



10.70±0.25



Ordering Information

FDB 26 37 - M0 T S 0 00 XX K C
 1 2 3 4 5 6 7 8 9

1	Category FDB- D-SUB	2	Circuits 26	3	Distinction No. 37	4	Type M0-Male	5	Assembly Layout T-Terminal type
6	Entry Angle S-180° Vertical	7	Color-Resin K6-Black U1-Blue	8	Packaging K-Tray	9	Distinction Type C-C Type		

<p>THIRD ANGLE PROJECTION</p>	GENERAL TOLERANCES (UNLESS SPECIFIED)		APPROVE BY LEO	DATE 29/JAN/24	PART NO. FDB2637-M0TS000XXKC	ITEM NO. FDB2637	<p>Building Technology Cornerstone</p>	
	DESIGN UNITS METRIC	X. ±0.30	X.' ±5'	CHECKED BY GISELLE	DATE 29/JAN/24	TITLE D-SUB Connector 26Circuits Terminal type Male		REV 1
	SCALE 5:1	X.X ±0.20	X.X' ±2'	DRAWN BY FAY	DATE 29/JAN/24	THIS DRAWING CONTAINS INFORMATION THAT IS PROPRIETARY TO TXGA INDUSTRIAL ELECTRONICS(S.Z)CO.,LTD AND SHOULD NOT BE USED WITHOUT WRITTEN PERMISSION		
	SIZE A4	X.XX ±0.15	X.XX' ±1'					
	X.XXX ±0.10	X.XXX' ±0.5'						