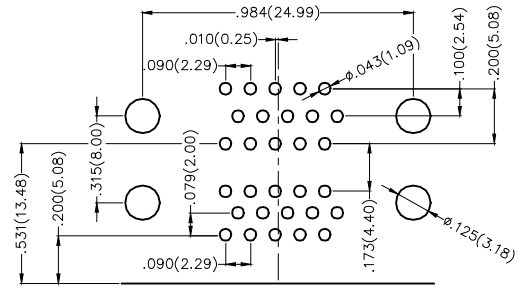
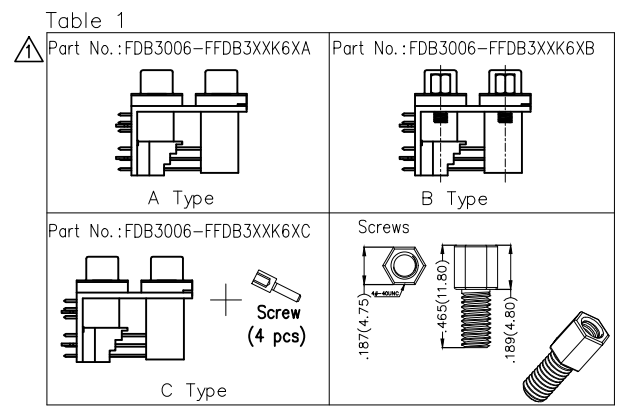
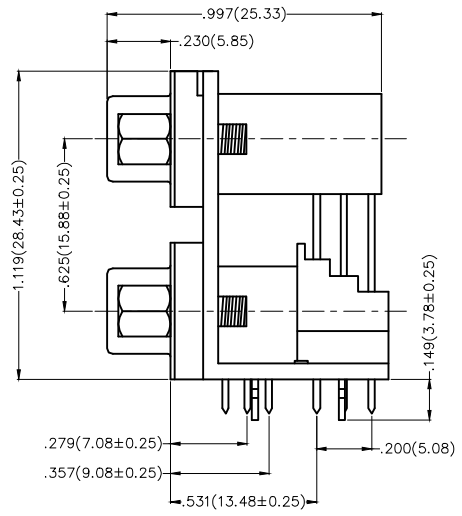
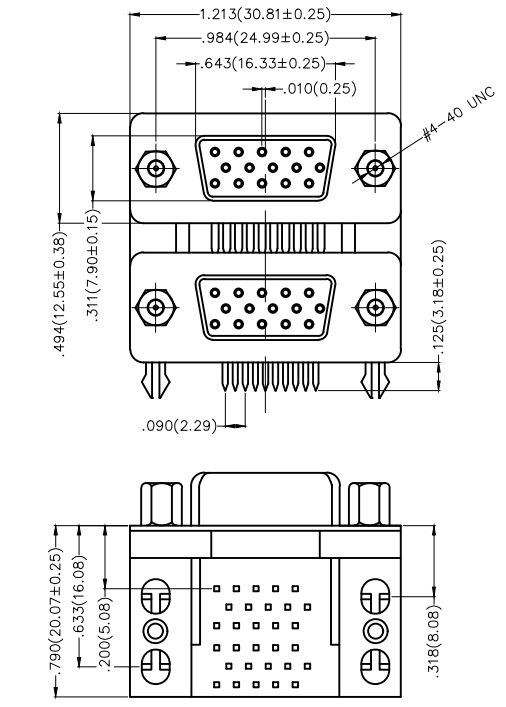
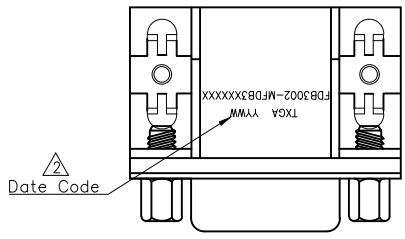


REV	LOCATIONS	DESCRIPTION	DATE	REVISER	APPD
1	⚠	update Table 1	13/AUG/24	MATT	LEO
2	⚠	Add marking code	13/Jan/25	NICK	LEO



Recommended P.C.Board Layout

Ordering Information

FDB 30 06 - FF D B 3 XX K6 X X
 1 2 3 4 5 6 7 8 9 10 11

SPECIFICATIONS

- Electrical
- Current Rating: 3A AC(rms)/DC
 - Voltage Rating: 250V AC(rms)/DC
 - Contact Resistance: 25 mΩ Max
 - Insulation Resistance: 1000 MΩ MIN
 - Withstanding Voltage: 500V AC r.m.s
 - Temperature Range-Operating: -55°C~+105°C
- Material and Finish
- Housing: LCP OR PBT+30% UL 94V-0
 - Contact: Copper Alloy/Gold Flash Plated On Contact Area Tin Plated On Solder tails, Nickel Under Plated Over All/Gold Plated Options
 - Shell: Spcc/Nickel Plated Over All
 - Board Lock: Copper Alloy/Tin Plated Over All
 - Screws: Copper Alloy/Nickel Plated Over All

1	Category FDB- D-SUB	2	Circuits 30	3	Distinction No. 06	4	Type FF- Female+Female	5	Assembly Layout D-DIP	6	Entry Angle B-90° Angle
7	Plating 3-Half Gold/Tin	8	Thickness of Gold Plating 00-Gold Flash 03-3u Custom Plate Available	9	Color-Resin K6-Black	10	Packaging K-Tray L-Tube	11	Products Categories A-A Type B-B Type C-C Type		

THIRD ANGLE PROJECTION	GENERAL TOLERANCES (UNLESS SPECIFIED)		APPROVE BY FRANK	DATE 28/JUN/13	PART NO. FDB3006-FFDB3XXK6XX	ITEM NO. FDB3006	<p>Leader Of Industry</p>
	DESIGN UNITS Inch (metric)	X.±.012(0.30) X.X±.008(0.20) X.XX±.006(0.15) X.XXX±.004(0.10)	X'.±5' .X'±2' .XX'±1' .XXX'±0.5'	CHECKED BY JACOB	DATE 28/JUN/13	TITLE D-SUB 15PIN FEMALE+15PIN FEMALE CONN	
SCALE 5:1	SIZE A4	DRAWN BY CHERRY		DATE 28/JUN/13	THIS DRAWING CONTAINS INFORMATION THAT IS PROPRIETARY TO TXGA INDUSTRIAL ELECTRONICS(S.2)CO.,LTD AND SHOULD NOT BE USED WITHOUT WRITTEN PERMISSION		