

REV	LOCATIONS	DESCRIPTION	DATE	REVISER	APPD
1		Add marking code	13/Jan/25	NICK	LEO

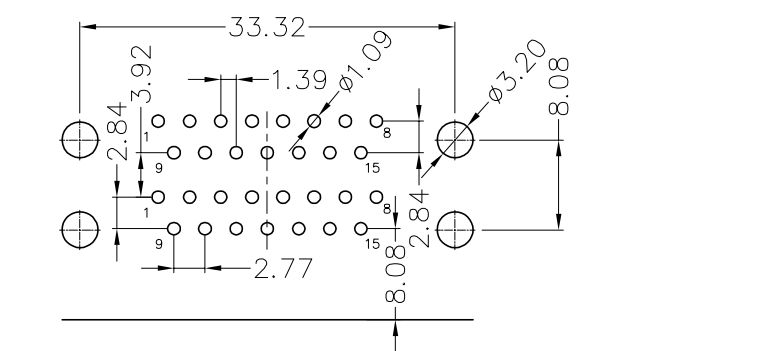
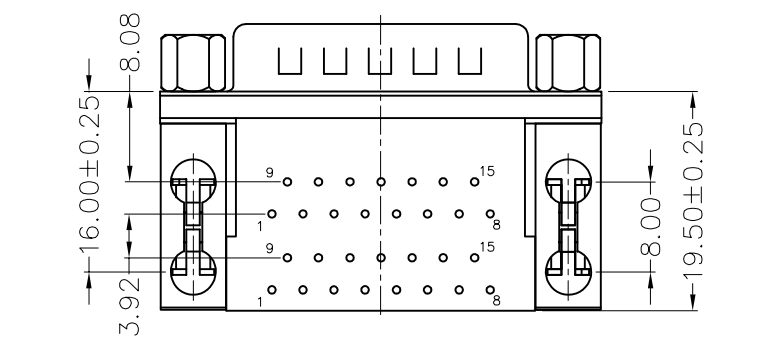
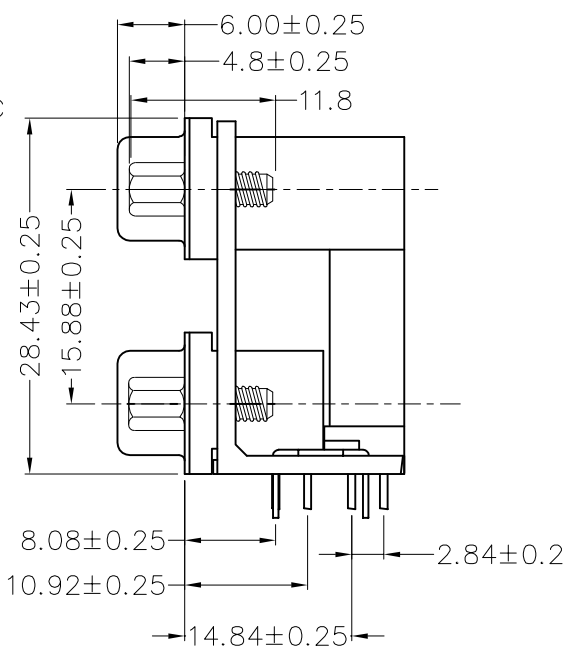
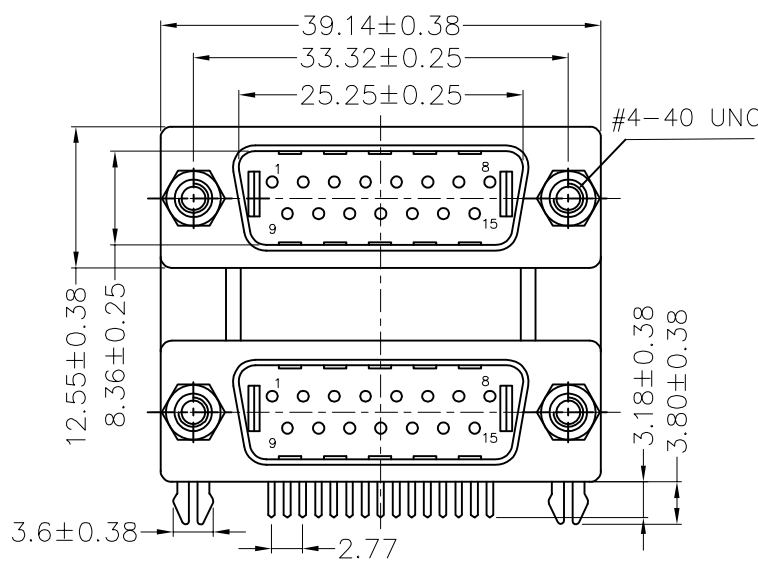
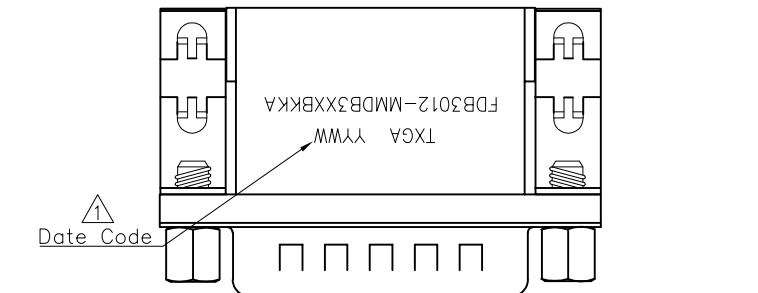
SPECIFICATIONS

Electrical

Current Rating: 3A AC(rms)/DC
Voltage Rating: 250V AC(rms)/DC
Contact Resistance: 20 mΩ Max
Insulation Resistance: 5000 MΩ MIN
Withstanding Voltage: 500V AC r.m.s
Temperature Range-Operating: -55°C~+85°C

Material And Finished

Housing: PBT (UL 94V-0), Color: Black
Contacts: Brass/ Gold flash on contact area
and tin plated on tails area
Shell: Steel/Nickel Plated
Board lock: Brass/Tin Plated
Screws: Carbon steel/Nickel Plated



Recommended P.C.Board Layout
General tolerances: ±0.05

Ordering Information

FDB 30 12 — MM D B 3 XX BK K A
1 2 3 4 5 6 7 8 9 10 11

1 Category FDB- D-SUB	2 Circuits 30	3 Distinction No. 12	4 Type MM-Male+Male	5 Assembly Layout D-DIP	6 Entry Angle B-90° Angle
7 Plating 3-Selective gold plated on contact area and bright tin plated on tails area	8 Thickness of Plating 00-Gold flash 03-3u"..... Custom Plate Available	9 Color-Resin BK-Black	10 Packaging K-Tray	11 Distinction Type A-A Type	

 THIRD ANGLE PROJECTION	GENERAL TOLERANCES (UNLESS SPECIFIED) X. ±0.30 X.* ±5' X.X ±0.20 X.X* ±2' X.XX ±0.15 X.XX* ±1' X.XXX ±0.10 X.XXX* ±0.5'		APPROVE BY FRANK	DATE 24/APR/22	PART NO. FDB3012-MMDB3XXBKKA	ITEM NO. FDB3012	 TXGA Leader Of Industry
	DESIGN UNITS Metric	CHECKED BY CHERRY	DATE 24/APR/22	TITLE D-SUB Connector 15+15Circuits 90° Angle		REV 1	
SCALE 1:1	SIZE A4	DRAWN BY MATT	DATE 24/APR/22	THIS DRAWING CONTAINS INFORMATION THAT IS PROPRIETARY TO TXGA INDUSTRIAL ELECTRONICS(S.Z)CO.,LTD AND SHOULD NOT BE USED WITHOUT WRITTEN PERMISSION			