

REV	LOCATIONS	DESCRIPTION	DATE	REVISER	APPD
1	△	Size changes	23/APR/21	KATE	CHERRY
2	△	Add marking code	13/Jan/25	NICK	LEO

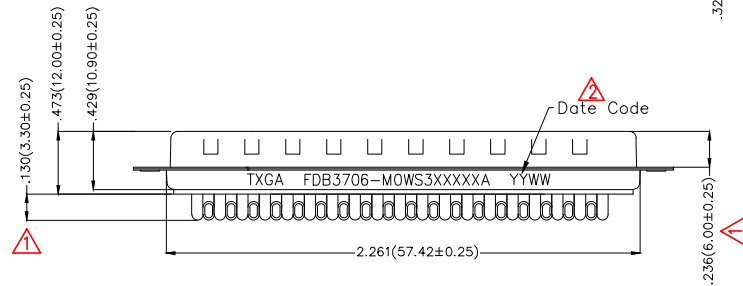
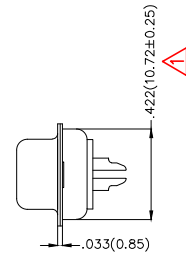
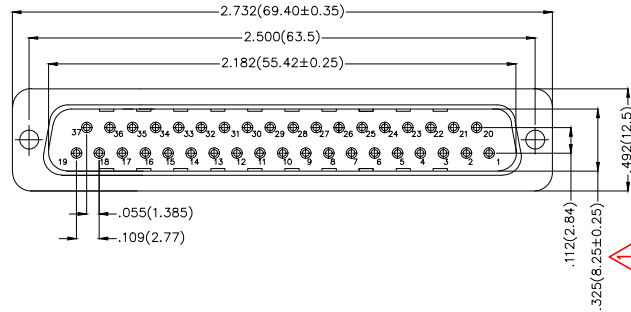
SPECIFICATIONS

Electrical

Current Rating: 3A AC(rms)/DC
Voltage Rating: 250V AC(rms)/DC
Contact Resistance: 25 mΩ Max
Insulation Resistance: 1000 MΩ Min
Withstanding Voltage: 500V AC r.m.s
Temperature Range—Operating: -55°C~+105°C

Material and plating


Housing: PBT UL 94V-0
Contact: Copper Alloy/
Selective gold in contact area, tin on tail
Shell: SPCC/ Nickel Plated



Ordering Information

FDB 37 06 — M0 W S 3 XX XX X A
1 2 3 4 5 6 7 8 9 10 11

1	Category FDB- D-SUB Connector	2	Circuits 37-37 Circuits	3	Distinction No. 06	4	Type M0-Male	5	Assembly Layout W-Welding Type	6	Entry Angle S-180° Vertical
7	Plating 3-Selective gold in contact area, tin on tail	8	Thickness of Plating 00-Gold Flash 03-3μ" Custom Plate Available	9	Color-Resin K6-Black U1-Blue WH-White	10	Packaging K-Tray L-Tube	11	Distinction Type A-A Type		

THIRD ANGLE PROJECTION	GENERAL TOLERANCES (UNLESS SPECIFIED)		APPROVE BY FRANK	DATE 28/JUN/13	PART NO. FDB3706-MOWS3XXXXXA	ITEM NO. FDB3706	 Leader Of Industry	
	DESIGN UNITS Inch (metric)	X.±.012(0.30) X.X±.008(0.20) X.XX±.006(0.15) X.XXX±.004(0.10)	X.±5° .X±2° .XX±1° .XXX±0.5°	CHECKED BY JACOB	DATE 28/JUN/13	TITLE D-SUB connector 37 Circuits 180° Vertical Male		REV 2
SCALE 5:1	SIZE A4		DRAWN BY CHERRY	DATE 28/JUN/13	THIS DRAWING CONTAINS INFORMATION THAT IS PROPRIETARY TO TXGA INDUSTRIAL ELECTRONICS(S.Z)CO.,LTD AND SHOULD NOT BE USED WITHOUT WRITTEN PERMISSION			

REV	LOCATIONS	DESCRIPTION	DATE	REVISER	APPD
1	△	Size changes	23/APR/21	KATE	CHERRY
2	△	Add marking code	13/Jan/25	NICK	LEO

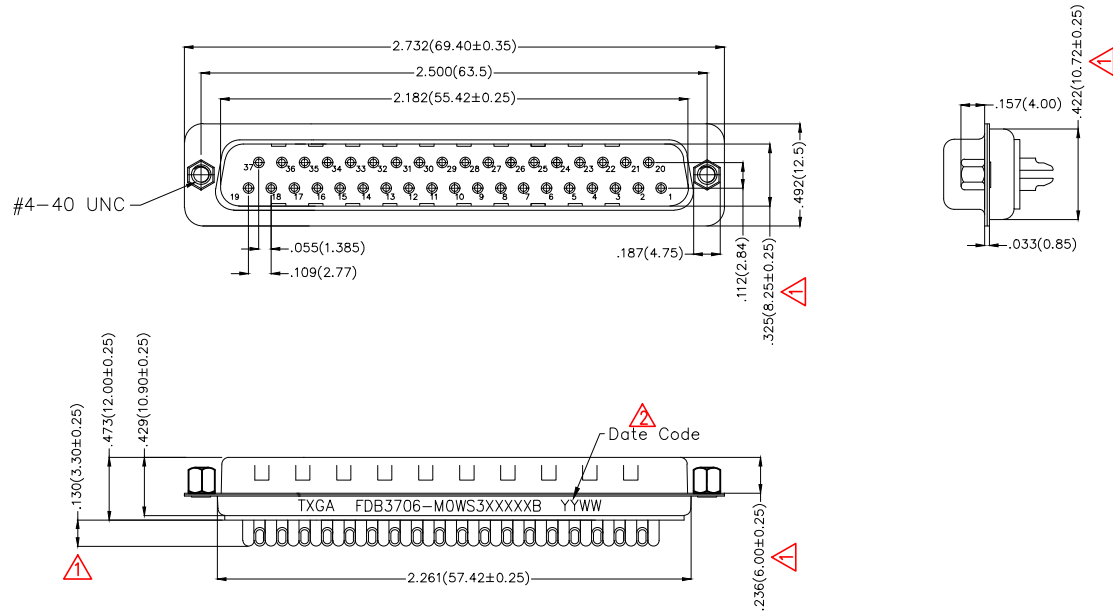
SPECIFICATIONS

Electrical

Current Rating: 3A AC(rms)/DC
Voltage Rating: 250V AC(rms)/DC
Contact Resistance: 25 mΩ Max
Insulation Resistance: 1000 MΩ Min
Withstanding Voltage: 500V AC r.m.s
Temperature Range—Operating: -55°C~+105°C

Material and plating


Housing: PBT UL 94V-0
Contact: Copper Alloy/
Selective gold in contact area, tin on tail
Shell: SPCC/ Nickel Plated
Screws: Copper Alloy/ Nickel Plated



Ordering Information

FDB 37 06 — M0 W S 3 XX XX X B
1 2 3 4 5 6 7 8 9 10 11

1	Category FDB- D-SUB Connector	2	Circuits 37-37 Circuits	3	Distinction No. 06	4	Type M0-Male	5	Assembly Layout W-Welding Type	6	Entry Angle S-180° Vertical
7	Plating 3-Selective gold in contact area, tin on tail	8	Thickness of Plating 00-Gold Flash 03-3μ" Custom Plate Available	9	Color-Resin K6-Black U1-Blue	10	Packaging K-Tray L-Tube	11	Distinction Type B-B Type		

THIRD ANGLE PROJECTION	GENERAL TOLERANCES (UNLESS SPECIFIED)		APPROVE BY FRANK	DATE 28/JUN/13	PART NO. FDB3706-M0WS3XXXXXB	ITEM NO. FDB3706	 Leader Of Industry
	DESIGN UNITS Inch (metric)	X.±.012(0.30) X.X±.008(0.20) X.XX±.006(0.15) X.XXX±.004(0.10)	X.±5° .X±2° .XX±1° .XXX±0.5°	CHECKED BY JACOB	DATE 28/JUN/13	TITLE D-SUB connector 37 Circuits 180° Vertical Male	
SCALE 5:1	SIZE A4	DRAWN BY CHERRY		DATE 28/JUN/13	THIS DRAWING CONTAINS INFORMATION THAT IS PROPRIETARY TO TXGA INDUSTRIAL ELECTRONICS(S.Z)CO.,LTD AND SHOULD NOT BE USED WITHOUT WRITTEN PERMISSION		

REV	LOCATIONS	DESCRIPTION	DATE	REVISER	APPD
1	△	Size changes	23/APR/21	KATE	CHERRY
2	△	Add marking code	13/Jan/25	NICK	LEO

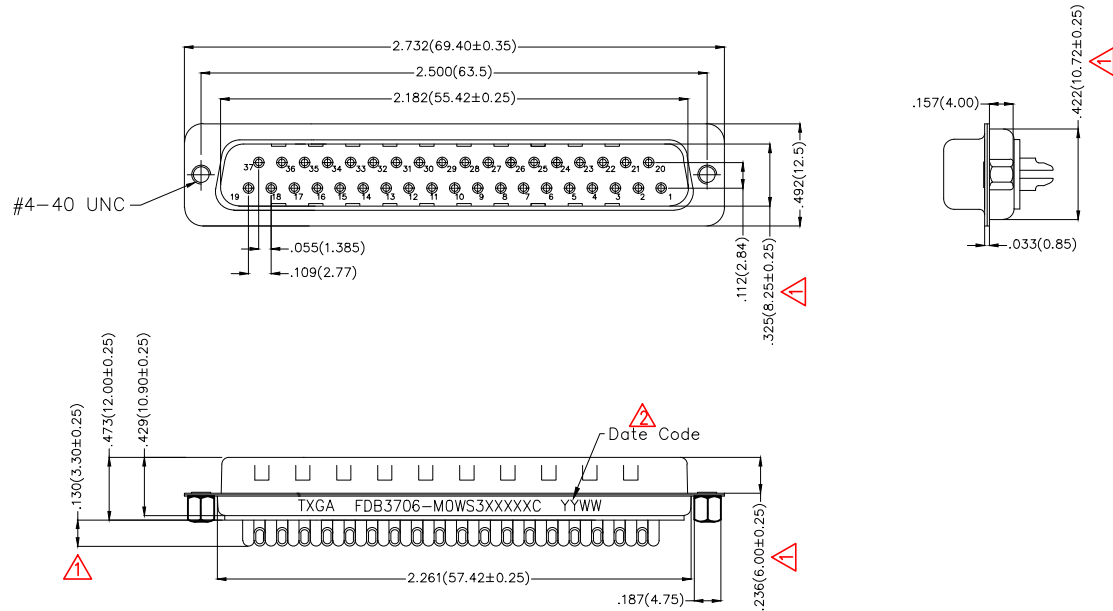
SPECIFICATIONS

Electrical

Current Rating: 3A AC(rms)/DC
Voltage Rating: 250V AC(rms)/DC
Contact Resistance: 25 mΩ Max
Insulation Resistance: 1000 MΩ Min
Withstanding Voltage: 500V AC r.m.s
Temperature Range—Operating: -55°C~+105°C

Material and plating


Housing: PBT UL 94V-0
Contact: Copper Alloy/
Selective gold in contact area, tin on tail
Shell: SPCC/ Nickel Plated
Screws: Copper Alloy/ Nickel Plated



Ordering Information

FDB 37 06 - M0 W S 3 XX XX X C
1 2 3 4 5 6 7 8 9 10 11

1	Category FDB- D-SUB Connector	2	Circuits 37-37 Circuits	3	Distinction No. 06	4	Type M0-Male	5	Assembly Layout W-Welding Type	6	Entry Angle S-180° Vertical
7	Plating 3-Selective gold in contact area, tin on tail	8	Thickness of Plating 00-Gold Flash 03-3μ" Custom Plate Available	9	Color-Resin K6-Black U1-Blue	10	Packaging K-Tray L-Tube	11	Distinction Type C-C Type		

THIRD ANGLE PROJECTION	GENERAL TOLERANCES (UNLESS SPECIFIED)		APPROVE BY FRANK	DATE 28/JUN/13	PART NO. FDB3706-MOWS3XXXXXC	ITEM NO. FDB3706	 Leader Of Industry	
	DESIGN UNITS Inch (metric)	X.±.012(0.30) X.X±.008(0.20) X.XX±.006(0.15) X.XXX±.004(0.10)	X.±5° .X±2° .XX±1° .XXX±0.5°	CHECKED BY JACOB	DATE 28/JUN/13	TITLE D-SUB connector 37 Circuits 180° Vertical Male		
SCALE 5:1	SIZE A4		DRAWN BY CHERRY	DATE 28/JUN/13	THIS DRAWING CONTAINS INFORMATION THAT IS PROPRIETARY TO TXGA INDUSTRIAL ELECTRONICS(S.Z)CO.,LTD AND SHOULD NOT BE USED WITHOUT WRITTEN PERMISSION		REV 2	SHEET NO. 1/1

REV	LOCATIONS	DESCRIPTION	DATE	REVISER	APPD
1		Size changes	23/APR/21	KATE	CHERRY
2		Add marking code	13/Jan/25	NICK	LEO

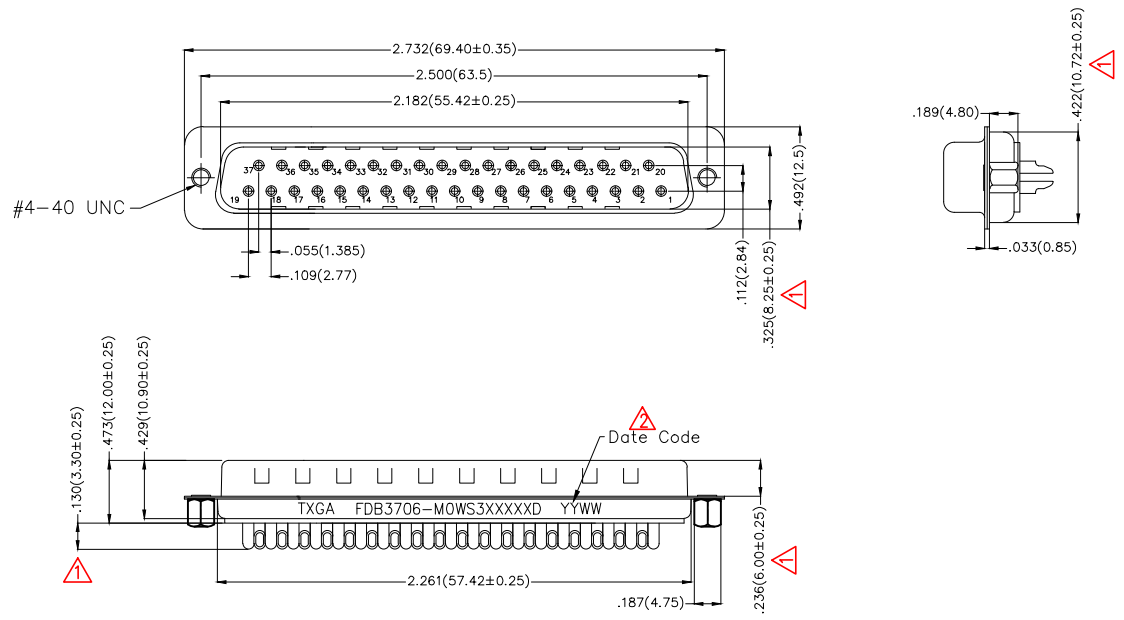
SPECIFICATIONS

Electrical

Current Rating: 3A AC(rms)/DC
Voltage Rating: 250V AC(rms)/DC
Contact Resistance: 25 mΩ Max
Insulation Resistance: 1000 MΩ Min
Withstanding Voltage: 500V AC r.m.s
Temperature Range—Operating: -55°C~+105°C

Material and plating

Housing: PBT UL 94V-0
Contact: Copper Alloy/
Selective gold in contact area, tin on tail
Shell: SPCC/ Nickel Plated
Screws: Copper Alloy/ Nickel Plated



Ordering Information

FDB 37 06 - M0 W S 3 XX XX X D
1 2 3 4 5 6 7 8 9 10 11

1	Category FDB- D-SUB Connector	2	Circuits 37-37 Circuits	3	Distinction No. 06	4	Type M0-Male	5	Assembly Layout W-Welding Type	6	Entry Angle S-180° Vertical
7	Plating 3-Selective gold in contact area, tin on tail	8	Thickness of Plating 00-Gold Flash 03-3μ" Custom Plate Available	9	Color-Resin K6-Black U1-Blue	10	Packaging K-Tray L-Tube	11	Distinction Type D-D Type		

 THIRD ANGLE PROJECTION	GENERAL TOLERANCES (UNLESS SPECIFIED) X.±.012(0.30) X.±5' X.X±.008(0.20) .X±2' X.XX±.006(0.15) .XX±1" X.XXX±.004(0.10) .XXX±0.5"		APPROVE BY FRANK DATE 28/JUN/13	PART NO. FDB3706-M0WS3XXXXXD	ITEM NO. FDB3706	 TXGA Leader Of Industry	
	DESIGN UNITS Inch (metric)	SCALE 5:1	SIZE A4	CHECKED BY JACOB DATE 28/JUN/13	DATE 28/JUN/13		TITLE D-SUB connector 37 Circuits 180° Vertical Male
THIS DRAWING CONTAINS INFORMATION THAT IS PROPRIETARY TO TXGA INDUSTRIAL ELECTRONICS(S.Z)CO.,LTD AND SHOULD NOT BE USED WITHOUT WRITTEN PERMISSION							

REV	LOCATIONS	DESCRIPTION	DATE	REVISER	APPD
1	△	Size changes	23/APR/21	KATE	CHERRY
2	△	Add marking code	13/Jan/25	NICK	LEO

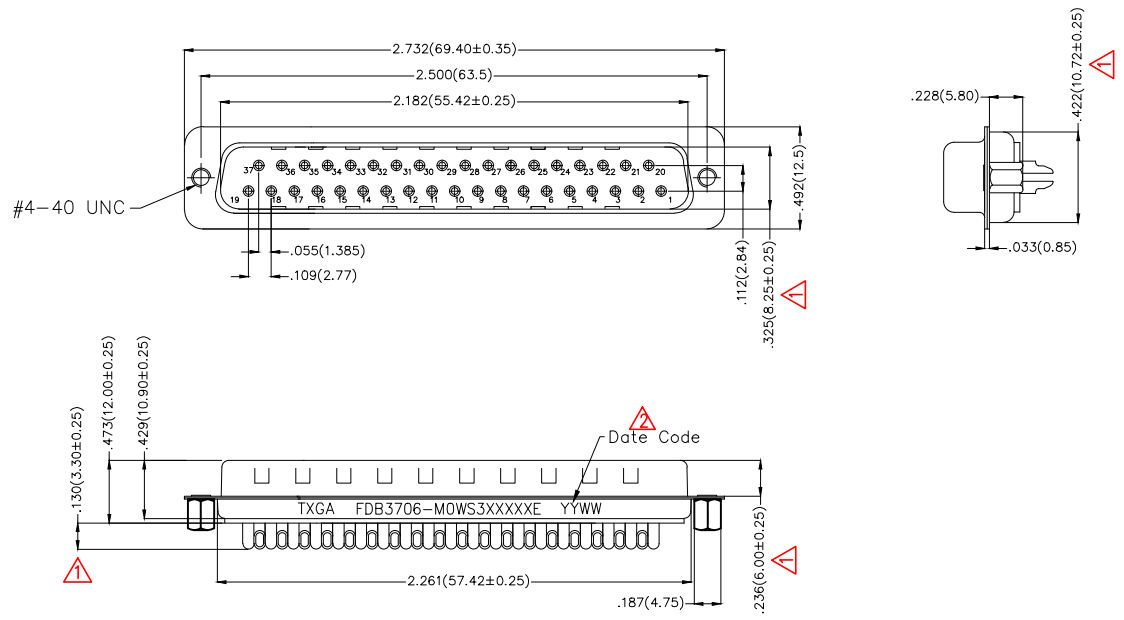
SPECIFICATIONS

Electrical

Current Rating: 3A AC(rms)/DC
Voltage Rating: 250V AC(rms)/DC
Contact Resistance: 25 mΩ Max
Insulation Resistance: 1000 MΩ Min
Withstanding Voltage: 500V AC r.m.s
Temperature Range—Operating: -55°C~+105°C

Material and plating

Housing: PBT UL 94V-0
Contact: Copper Alloy/
Selective gold in contact area, tin on tail
Shell: SPCC/ Nickel Plated
Screws: Copper Alloy/ Nickel Plated



Ordering Information

FDB	37	06	-	M0	W	S	3	XX	XX	X	E
1	2	3	4	5	6	7	8	9	10	11	

1	Category	2	Circuits	3	Distinction No.	4	Type	5	Assembly Layout	6	Entry Angle
	FDB- D-SUB Connector		37-37 Circuits		06		M0-Male		W-Welding Type		S-180° Vertical
7	Plating	8	Thickness of Plating	9	Color-Resin	10	Packaging	11	Distinction Type		
	3-Selective gold in contact area, tin on tail		00-Gold Flash 03-3μ" Custom Plate Available		K6-Black U1-Blue		K-Tray L-Tube		E-E Type		

THIRD ANGLE PROJECTION	GENERAL TOLERANCES (UNLESS SPECIFIED)		APPROVE BY	DATE	PART NO.	ITEM NO.	TXGA Leader Of Industry
	X.±.012(0.30)	X.±5'	FRANK	28/JUN/13	FDB3706-MOWS3XXXXXE	FDB3706	
DESIGN UNITS Inch (metric)	X.X±.008(0.20)	.X±2'	CHECKED BY	DATE	TITLE		REV 2
SCALE	X.XX±.006(0.15)	.XX±1'	JACOB	28/JUN/13	D-SUB connector 37 Circuits 180° Vertical Male		
SIZE	X.XXX±.004(0.10)	.XXX±0.5'	DRAWN BY	DATE	THIS DRAWING CONTAINS INFORMATION THAT IS PROPRIETARY TO TXGA INDUSTRIAL ELECTRONICS(S.Z)CO.,LTD AND SHOULD NOT BE USED WITHOUT WRITTEN PERMISSION		
5:1			CHERRY	28/JUN/13			