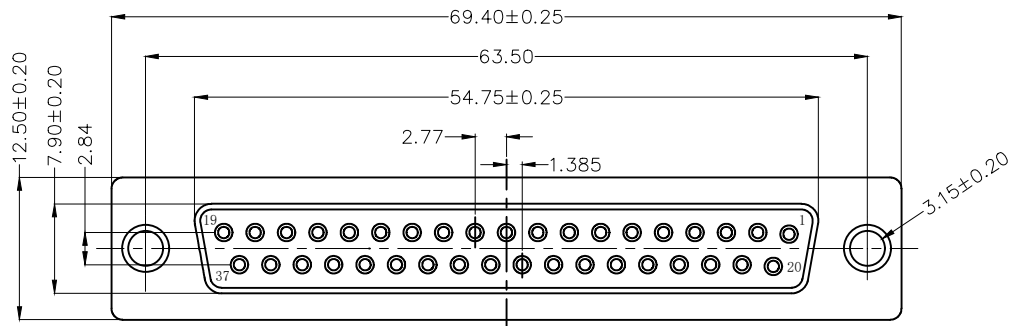


REV	LOCATIONS	DESCRIPTION	DATE	REVISER	APPD
1	△	Add marking code	13/Jan/25	NICK	LEO



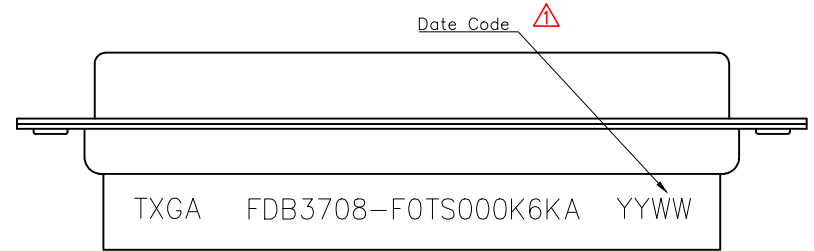
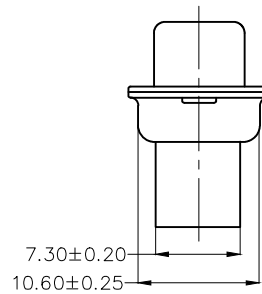
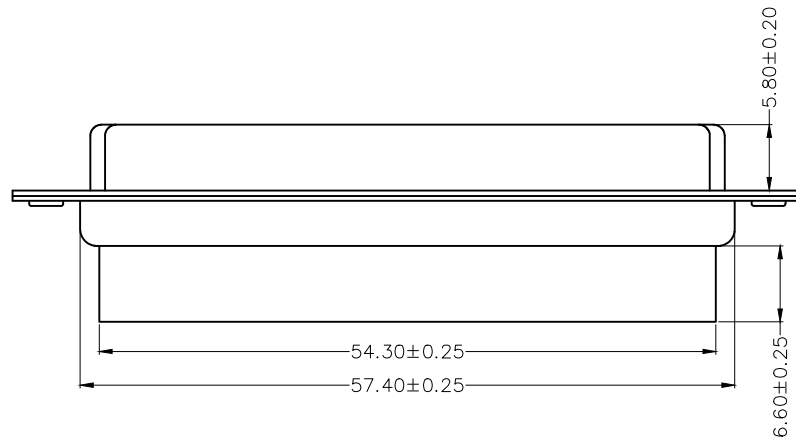
### SPECIFICATIONS

#### Electrical

Insulation Resistance: 3000 MΩ MIN  
 Withstanding Voltage: 250V AC r.m.s  
 Temperature Range—Operating: -45°C~+85°C

#### Material and Plating

Housing: PBT (UL 94V-0) Black  
 Front Shell: Spcc/ Nickel plated  
 Back Shell: Spcc/ Tin plated



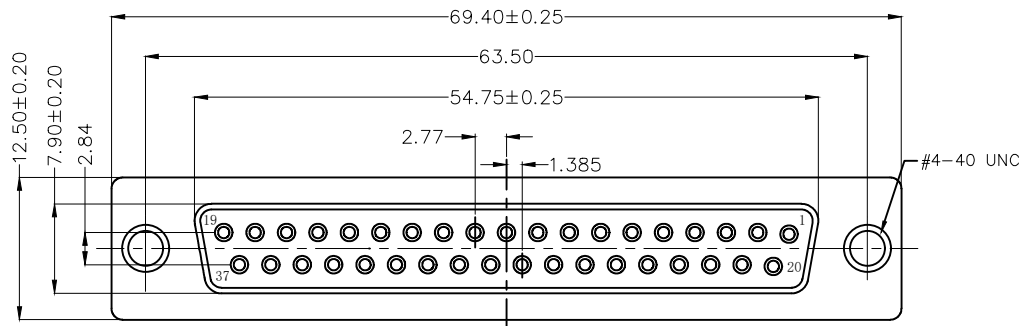
### Ordering Information

FDB 37 08 - F0 T S 0 00 K6 K A  
 1 2 3 4 5 6 7 8 9

1	Category FDB- D-SUB	2	Circuits 37	3	Distinction No. 08	4	Type F0-Female	5	Assembly Layout T-Terminal type
6	Entry Angle S-180° Vertical	7	Color-Resin K6-Black	8	Packaging K-Tray	9	Distinction Type A-A Type		

 THIRD ANGLE PROJECTION	GENERAL TOLERANCES (UNLESS SPECIFIED)		APPROVE BY FRANK	DATE 14/JUN/22	PART NO. FDB3708-F0TS000K6KA	ITEM NO. FDB3708	 Leader Of Industry
	DESIGN UNITS Metric	X.±0.30	X.±5'	CHECKED BY CHERRY	DATE 14/JUN/22	TITLE D-SUB Connector 37Circuits Terminal type Female	
SCALE 5:1	SIZE A4	X.XX±0.15	.XX±1'	DRAWN BY MATT	DATE 14/JUN/22	THIS DRAWING CONTAINS INFORMATION THAT IS PROPRIETARY TO TXGA INDUSTRIAL ELECTRONICS(S.Z)CO.,LTD AND SHOULD NOT BE USED WITHOUT WRITTEN PERMISSION	
		X.XXX±0.10	.XXX±0.5'			REV 1	SHEET NO. 1/1

REV	LOCATIONS	DESCRIPTION	DATE	REVISER	APPD
1	△	Add marking code	13/Jan/25	NICK	LEO



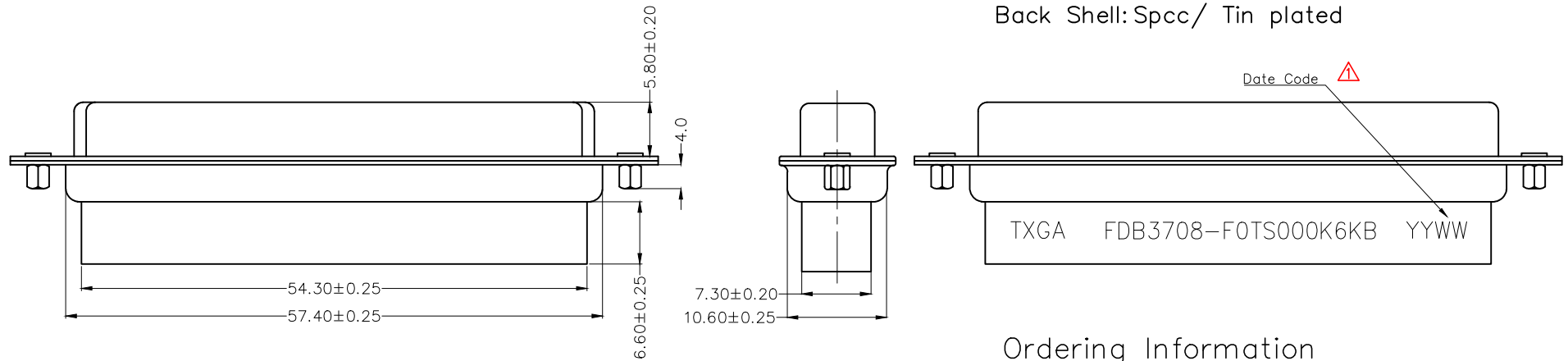
### SPECIFICATIONS

#### Electrical

Insulation Resistance: 3000 MΩ MIN  
 Withstanding Voltage: 250V AC r.m.s  
 Temperature Range—Operating: -45°C~+85°C

#### Material and Plating

Housing: PBT (UL 94V-0) Black  
 Front Shell: Spcc/ Nickel plated  
 Back Shell: Spcc/ Tin plated



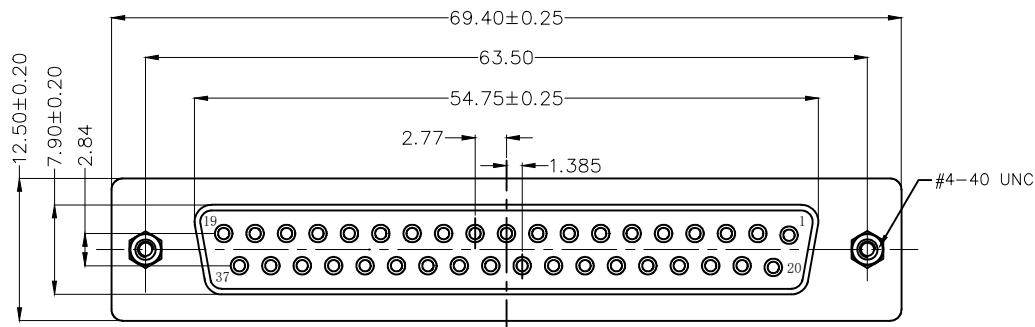
### Ordering Information

FDB 37 08 - F0 T S 0 00 K6 K B  
 1 2 3 4 5 6 7 8 9

1	Category FDB- D-SUB	2	Circuits 37	3	Distinction No. 08	4	Type F0-Female	5	Assembly Layout T-Terminal type
6	Entry Angle S-180° Vertical	7	Color-Resin K6-Black	8	Packaging K-Tray	9	Distinction Type B-B Type		

 THIRD ANGLE PROJECTION	GENERAL TOLERANCES (UNLESS SPECIFIED)		APPROVE BY FRANK	DATE 14/JUN/22	PART NO. FDB3708-F0TS000K6KB	ITEM NO. FDB3708	 Leader Of Industry
	DESIGN UNITS Metric	X.±0.30	X.±5'	CHECKED BY CHERRY	DATE 14/JUN/22	TITLE D-SUB Connector 37Circuits Terminal type Female	
SCALE 5:1	SIZE A4	X.XX±0.15	.XX±1'	DRAWN BY MATT	DATE 14/JUN/22	THIS DRAWING CONTAINS INFORMATION THAT IS PROPRIETARY TO TXGA INDUSTRIAL ELECTRONICS(S.Z)CO.,LTD AND SHOULD NOT BE USED WITHOUT WRITTEN PERMISSION	

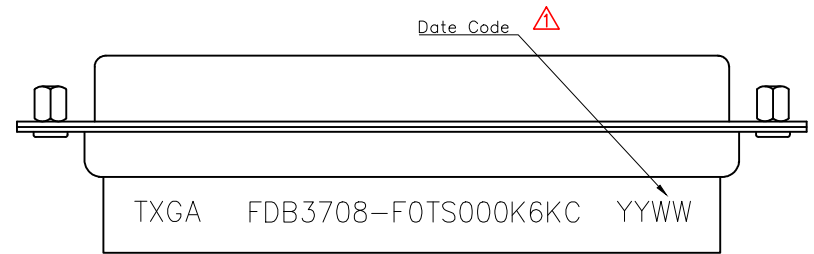
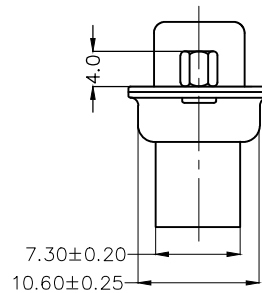
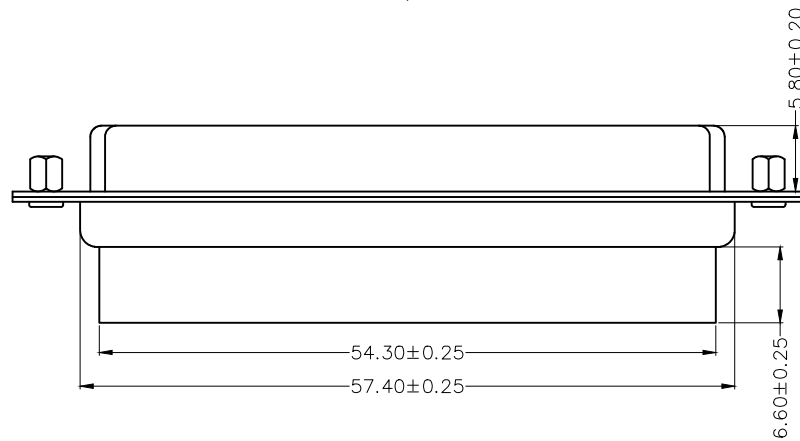
REV	LOCATIONS	DESCRIPTION	DATE	REVISER	APPD
1	△	Add marking code	13/Jan/25	NICK	LEO



### SPECIFICATIONS

Electrical  
 Insulation Resistance: 3000 MΩ MIN  
 Withstanding Voltage: 250V AC r.m.s  
 Temperature Range—Operating: -45°C~+85°C

Material and Plating  
 Housing: PBT (UL 94V-0) Black  
 Front Shell: Spcc/ Nickel plated  
 Back Shell: Spcc/ Tin plated



### Ordering Information

FDB 37 08 - F0 T S 0 00 K6 K C  
 1 2 3 4 5 6 7 8 9

1	Category FDB- D-SUB	2	Circuits 37	3	Distinction No. 08	4	Type F0-Female	5	Assembly Layout T-Terminal type
6	Entry Angle S-180° Vertical	7	Color-Resin K6-Black	8	Packaging K-Tray	9	Distinction Type C-C Type		

 THIRD ANGLE PROJECTION	GENERAL TOLERANCES (UNLESS SPECIFIED)		APPROVE BY FRANK	DATE 14/JUN/22	PART NO. FDB3708-F0TS000K6KC	ITEM NO. FDB3708	 Leader Of Industry
	DESIGN UNITS Metric	X.±0.30	X.±5'	CHECKED BY CHERRY	DATE 14/JUN/22	TITLE D-SUB Connector 37Circuits Terminal type Female	
SCALE 5:1	SIZE A4	X.XX±0.15	.XX±1'	DRAWN BY MATT	DATE 14/JUN/22	THIS DRAWING CONTAINS INFORMATION THAT IS PROPRIETARY TO TXGA INDUSTRIAL ELECTRONICS(S.Z)CO.,LTD AND SHOULD NOT BE USED WITHOUT WRITTEN PERMISSION	
		X.XXX±0.10	.XXX±0.5'			REV 1	SHEET NO. 1/1