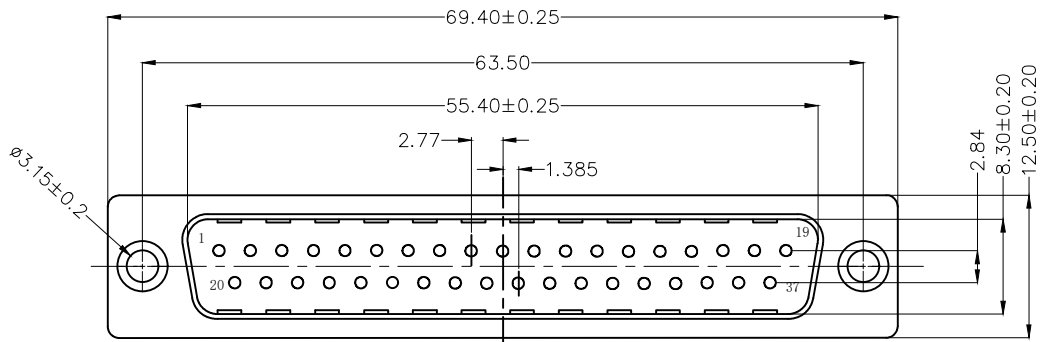


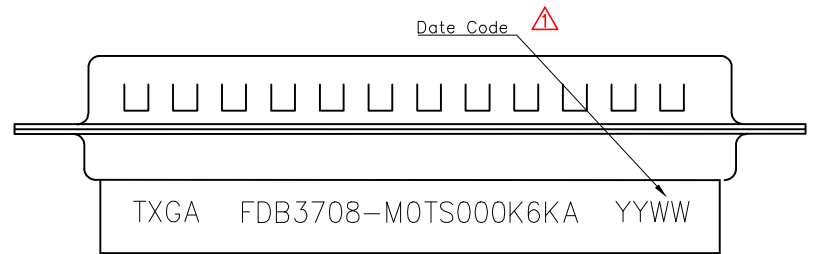
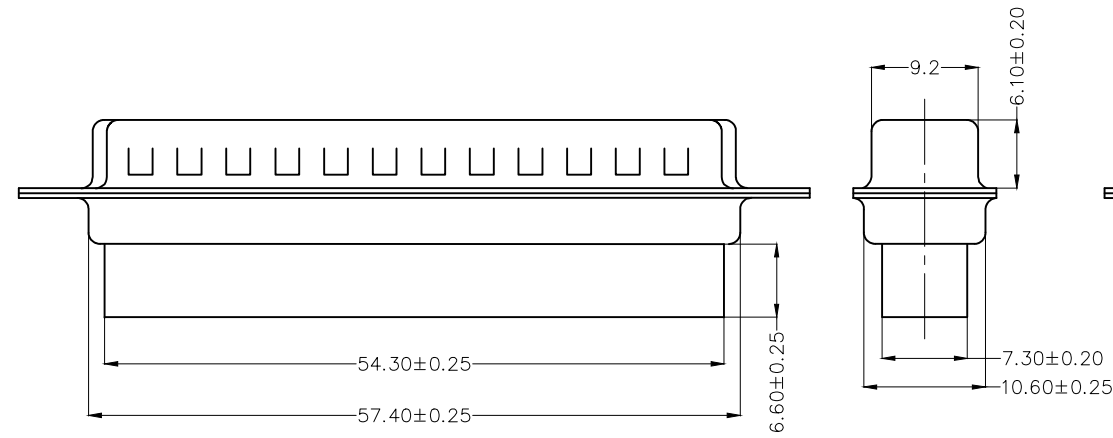
REV	LOCATIONS	DESCRIPTION	DATE	REVISER	APPD
1	△	Add marking code	13/Jan/25	NICK	LEO



**SPECIFICATIONS**

**Electrical**  
 Insulation Resistance: 3000 MΩ MIN  
 Withstanding Voltage: 250V AC r.m.s  
 Temperature Range—Operating: -45°C~+85°C

**Material and Plating**  
 Housing: PBT (UL 94V-0) Black  
 Front Shell: Spcc/ Nickel plated  
 Back Shell: Spcc/ Tin plated



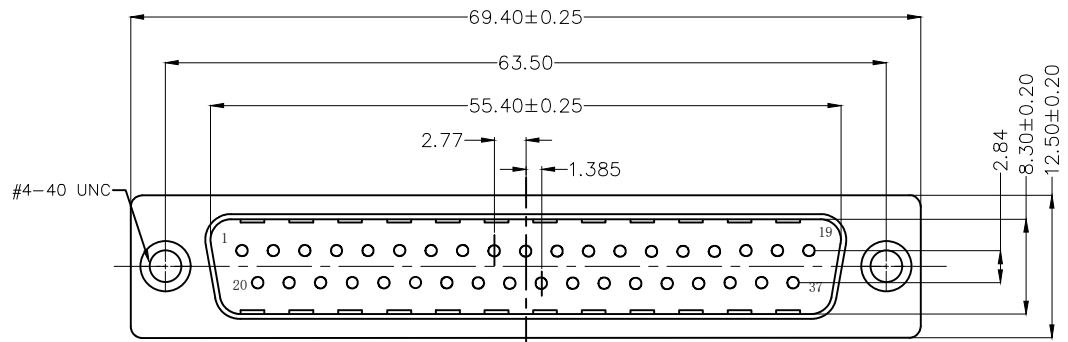
**Ordering Information**

FDB 37 08 — M0 T S 0 00 K6 K A  
 1 2 3 4 5 6 7 8 9

1   Category FDB- D-SUB	2   Circuits 37	3   Distinction No. 08	4   Type M0—Male	5   Assembly Layout T—Terminal type
6   Entry Angle S—180° Vertical	7   Color—Resin K6—Black	8   Packaging K—Tray	9   Distinction Type A—A Type	

<p>THIRD ANGLE PROJECTION</p>	GENERAL TOLERANCES (UNLESS SPECIFIED)		APPROVE BY FRANK	DATE 14/JUN/22	PART NO. FDB3708-M0TS000K6KA	ITEM NO. FDB3708	<p>Leader Of Industry</p>	
	DESIGN UNITS Metric	X.±0.30	X.±5'	CHECKED BY CHERRY	DATE 14/JUN/22	TITLE D-SUB Connector 37Circuits Terminal type Male		REV 1
	SCALE 5:1	X.XX±0.15	.XX±1'	DRAWN BY MATT	DATE 14/JUN/22	THIS DRAWING CONTAINS INFORMATION THAT IS PROPRIETARY TO TXGA INDUSTRIAL ELECTRONICS(S.Z)CO.,LTD AND SHOULD NOT BE USED WITHOUT WRITTEN PERMISSION		
	SIZE A4	X.XXX±0.10	.XXX±0.5'					

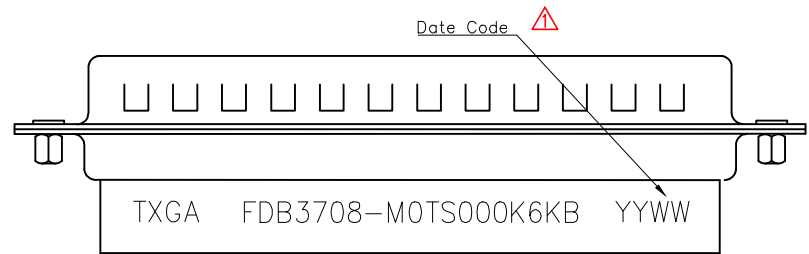
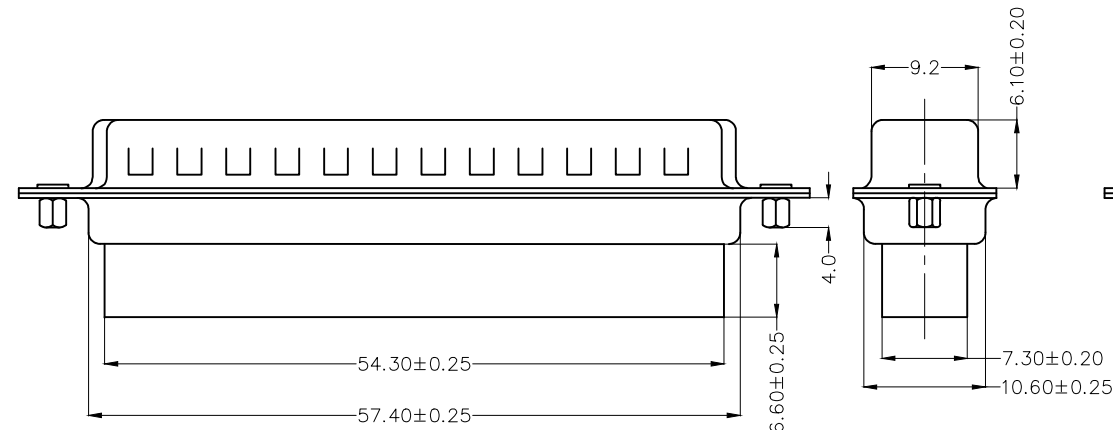
REV	LOCATIONS	DESCRIPTION	DATE	REVISER	APPD
1	△	Add marking code	13/Jan/25	NICK	LEO



**SPECIFICATIONS**

**Electrical**  
 Insulation Resistance: 3000 MΩ MIN  
 Withstanding Voltage: 250V AC r.m.s  
 Temperature Range—Operating: -45°C~+85°C

**Material and Plating**  
 Housing: PBT (UL 94V-0) Black  
 Front Shell: Spcc/ Nickel plated  
 Back Shell: Spcc/ Tin plated



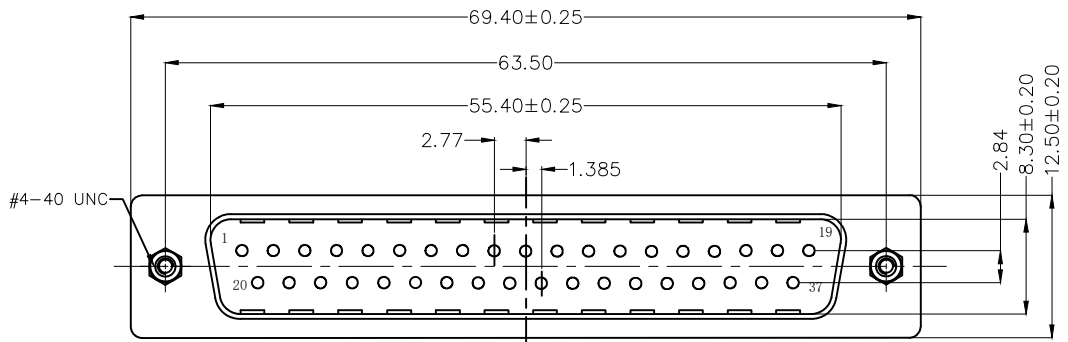
**Ordering Information**

FDB 37 08 — M0 T S 0 00 K6 K B  
 1 2 3 4 5 6 7 8 9

1   Category FDB- D-SUB	2   Circuits 37	3   Distinction No. 08	4   Type M0—Male	5   Assembly Layout T—Terminal type
6   Entry Angle S—180° Vertical	7   Color—Resin K6—Black	8   Packaging K—Tray	9   Distinction Type B—B Type	

 THIRD ANGLE PROJECTION	GENERAL TOLERANCES (UNLESS SPECIFIED)		APPROVE BY FRANK	DATE 14/JUN/22	PART NO. FDB3708-M0TS000K6KB	ITEM NO. FDB3708	 Leader Of Industry
	DESIGN UNITS Metric	X.±0.30	X.±5'	CHECKED BY CHERRY	DATE 14/JUN/22	TITLE D-SUB Connector 37Circuits Terminal type Male	
SCALE 5:1	SIZE A4	X.XX±0.15	.XX±1'	DRAWN BY MATT	DATE 14/JUN/22	THIS DRAWING CONTAINS INFORMATION THAT IS PROPRIETARY TO TXGA INDUSTRIAL ELECTRONICS(S.Z)CO.,LTD AND SHOULD NOT BE USED WITHOUT WRITTEN PERMISSION	
		X.XXX±0.10	.XXX±0.5'			REV 1	SHEET NO. 1/1

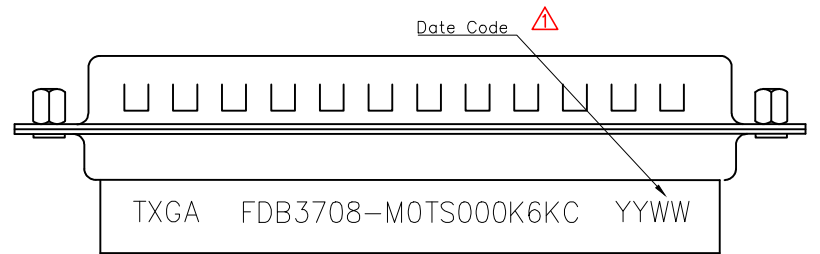
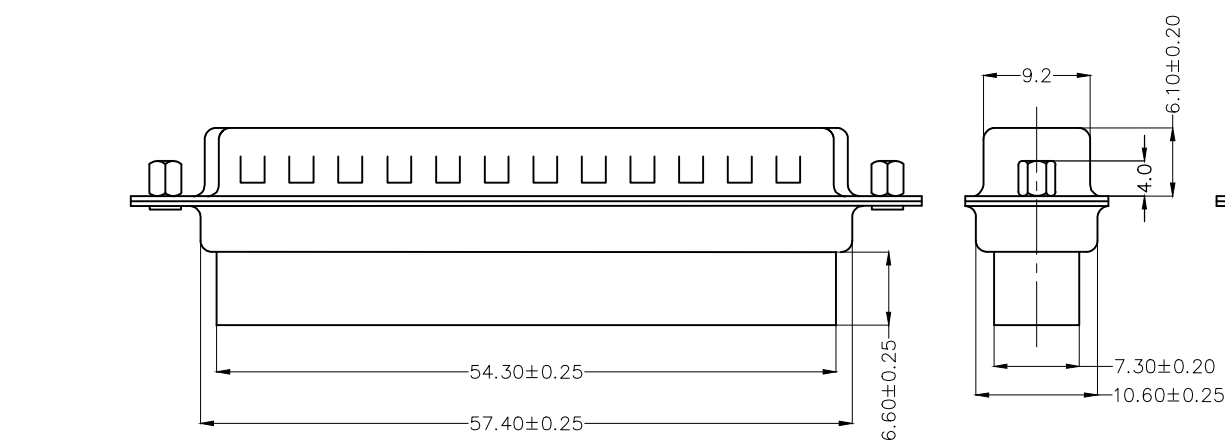
REV	LOCATIONS	DESCRIPTION	DATE	REVISER	APPD
1		Add marking code	13/Jan/25	NICK	LEO



**SPECIFICATIONS**

**Electrical**  
 Insulation Resistance: 3000 MΩ MIN  
 Withstanding Voltage: 250V AC r.m.s  
 Temperature Range—Operating: -45°C~+85°C

**Material and Plating**  
 Housing: PBT (UL 94V-0) Black  
 Front Shell: Spcc/ Nickel plated  
 Back Shell: Spcc/ Tin plated



**Ordering Information**

FDB 37 08 — M0 T S 0 00 K6 K C  
 1 2 3 4 5 6 7 8 9

1   Category FDB- D-SUB	2   Circuits 37	3   Distinction No. 08	4   Type M0—Male	5   Assembly Layout T—Terminal type
6   Entry Angle S—180° Vertical	7   Color—Resin K6—Black	8   Packaging K—Tray	9   Distinction Type C—C Type	

 THIRD ANGLE PROJECTION  DESIGN UNITS Metric  SCALE 5:1 SIZE A4	GENERAL TOLERANCES (UNLESS SPECIFIED)		APPROVE BY FRANK	DATE 14/JUN/22	PART NO. FDB3708-M0TS000K6KC	ITEM NO. FDB3708	 Leader Of Industry
	X.±0.30	X.±5'	CHECKED BY CHERRY	DATE 14/JUN/22	TITLE D-SUB Connector 37Circuits Terminal type Male		
	X.X±0.15	.XX±1'	DRAWN BY MATT	DATE 14/JUN/22	THIS DRAWING CONTAINS INFORMATION THAT IS PROPRIETARY TO TXGA INDUSTRIAL ELECTRONICS(S.Z)CO.,LTD AND SHOULD NOT BE USED WITHOUT WRITTEN PERMISSION		
	X.XXX±0.10	.XXX±0.5'					