

REV	LOCATIONS	DESCRIPTION	DATE	REVISER	APPD
1	△	Add the "TXGA" logo	11/JUL/18	CHERRY	ANDY
2	△	Size changes	16/JUN/21	KATE	CHERRY
3	△	Material changes	16/NOV/23	MATT	LEO
4	△	Add spray code	13/Jan/25	NICK	LEO

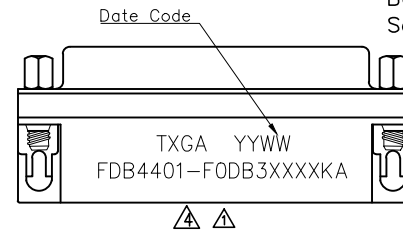
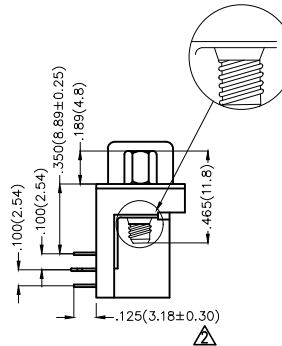
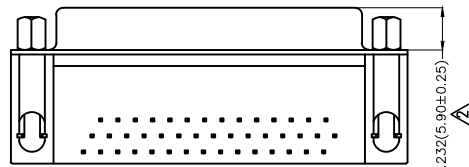
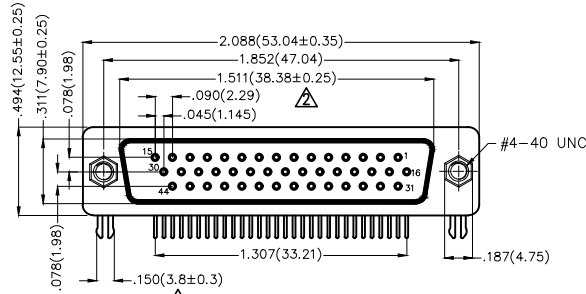
SPECIFICATIONS

Electrical

Current Rating: 3A AC(rms)/DC
Voltage Rating: 250V AC(rms)/DC
Contact Resistance: 30 mΩ Max
Insulation Resistance: 1000 MΩ Min
Withstanding Voltage: 500V AC r.m.s
Temperature Range—Operating: -55°C~+105°C

Material and plating

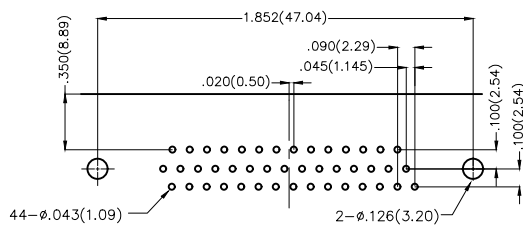
Housing: PBT UL 94V-0
Contact: Copper Alloy/
Selective gold on contact area, tin on tail
Shell: SPCC/ Nickel Plated
Board Lock: SPCC/ Tin Plated △
Screws: Steel/ Nickel Plated △



Ordering Information

FDB 44 01 - F0 D B 3 XX XX K A
1 2 3 4 5 6 7 8 9 10 11

1	Category FDB- D-SUB Connector	2	Circuits 44-44 Circuits	3	Distinction No. 01	4	Type F0-Female	5	Assembly Layout D-DIP	6	Entry Angle B-90° Angle
7	Plating 3-Selective gold on contact area, tin on tail	8	Thickness of Plating 00-Gold Flash 03-3μ" Custom Plate Available	9	Color-Resin K6-Black U1-Blue	10	Packaging K-Tray	11	Distinction Type A-A Type		



Recommended P.C.Board Layout

 THIRD ANGLE PROJECTION	GENERAL TOLERANCES (UNLESS SPECIFIED)		APPROVE BY FRANK	DATE 28/JUN/13	PART NO. FDB4401-F0DB3XXXXKA	ITEM NO. FDB4401	 TXGA Building Technology Cornerstone	
	X.±.012(0.30)	X.'±5'	CHECKED BY JACOB	DATE 28/JUN/13	TITLE D-SUB connector 44 Circuits 90° Angle Female			REV 4
	DESIGN UNITS Inch (metric)	X.X±.008(0.20)	X.'±2'	DRAWN BY CHERRY	DATE 28/JUN/13	THIS DRAWING CONTAINS INFORMATION THAT IS PROPRIETARY TO TXGA INDUSTRIAL ELECTRONICS(S.Z)CO.,LTD AND SHOULD NOT BE USED WITHOUT WRITTEN PERMISSION		
	SCALE 5:1	SIZE A4	X.XX±.006(0.15)	X.'±1'				

REV	LOCATIONS	DESCRIPTION	DATE	REVISER	APPD
1	△	1. Size changes 2. Add the "TXGA" logo	10/MAR/22	KATE	CHERRY
2	△	Add spray code	13/Jan/25	NICK	LEO

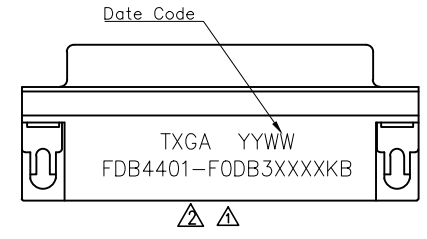
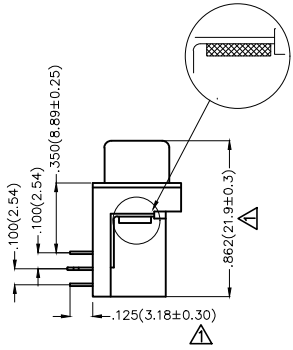
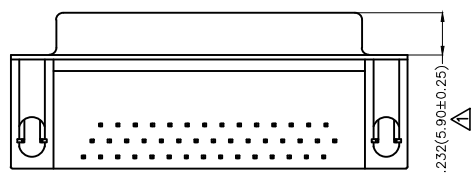
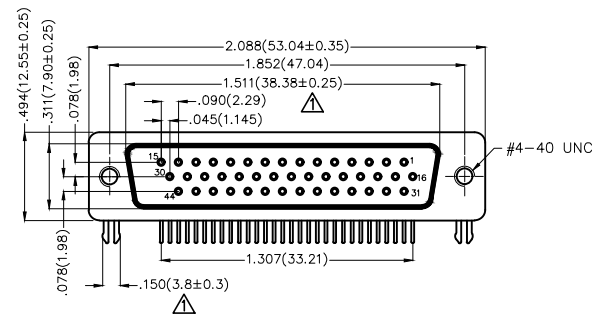
SPECIFICATIONS

Electrical

Current Rating: 3A AC(rms)/DC
Voltage Rating: 250V AC(rms)/DC
Contact Resistance: 30 mΩ Max
Insulation Resistance: 1000 MΩ Min
Withstanding Voltage: 500V AC r.m.s
Temperature Range—Operating: -55°C~+105°C

Material and plating

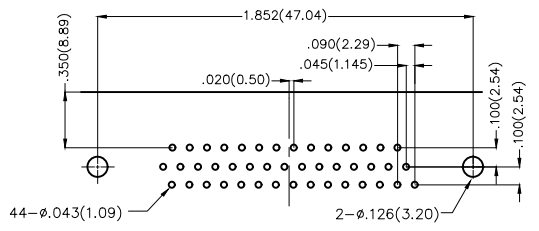
Housing: PBT UL 94V-0
Contact: Copper Alloy/
Selective gold on contact area, tin on tail
Shell: SPCC/ Nickel Plated
Board Lock: Copper Alloy/ Tin Plated



Ordering Information

FDB 44 01 - F0 D B 3 XX XX K B
1 2 3 4 5 6 7 8 9 10 11

1 Category FDB- D-SUB Connector	2 Circuits 44-44 Circuits	3 Distinction No. 01	4 Type F0-Female	5 Assembly Layout D-DIP	6 Entry Angle B-90° Angle
7 Plating 3-Selective gold on contact area, tin on tail	8 Thickness of Plating 00-Gold Flash 03-3μ" Custom Plate Available	9 Color-Resin K6-Black U1-Blue	10 Packaging K-Tray	11 Distinction Type B-B Type	



Recommended P.C.Board Layout

THIRD ANGLE PROJECTION	GENERAL TOLERANCES (UNLESS SPECIFIED)		APPROVE BY FRANK	DATE 28/JUN/13	PART NO. FDB4401-F0DB3XXXXKB	ITEM NO. FDB4401	 Building Technology Cornerstone
	DESIGN UNITS Inch (metric)	X.±.012(0.30) X.X±.008(0.20) X.XX±.006(0.15) X.XXX±.004(0.10)	X.'±5' .X'±2' .XX'±1' .XXX'±0.5'	CHECKED BY JACOB	DATE 28/JUN/13	TITLE D-SUB connector 44 Circuits 90° Angle Female	
SCALE 5:1	SIZE A4		DRAWN BY CHERRY	DATE 28/JUN/13	THIS DRAWING CONTAINS INFORMATION THAT IS PROPRIETARY TO TXGA INDUSTRIAL ELECTRONICS(S.Z)CO.,LTD AND SHOULD NOT BE USED WITHOUT WRITTEN PERMISSION		

REV 2 SHEET NO. 1/1

REV	LOCATIONS	DESCRIPTION	DATE	REVISER	APPD
1	△	Size changes	01/JUL/21	KATE	CHERRY
2	△	Add the "TXGA" logo	10/MAR/22	KATE	CHERRY
3	△	Add spray code	13/Jan/25	NICK	LEO

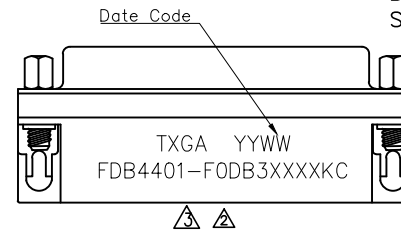
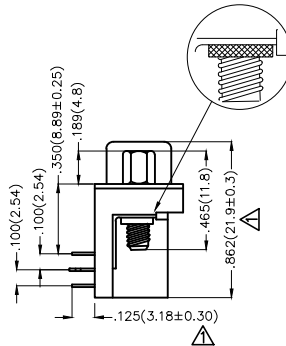
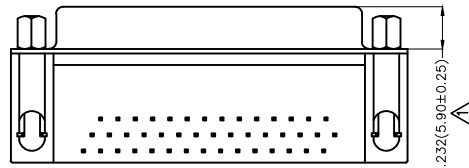
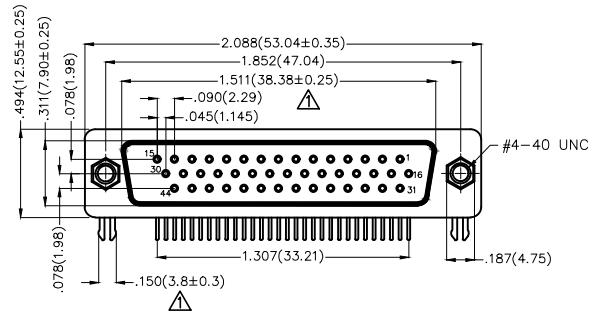
SPECIFICATIONS

Electrical

Current Rating: 3A AC(rms)/DC
Voltage Rating: 250V AC(rms)/DC
Contact Resistance: 30 mΩ Max
Insulation Resistance: 1000 MΩ Min
Withstanding Voltage: 500V AC r.m.s
Temperature Range—Operating: -55°C~+105°C

Material and plating

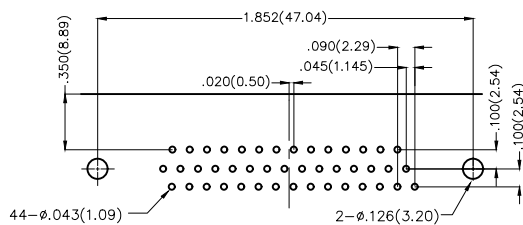
Housing: PBT UL 94V-0
Contact: Copper Alloy/
Selective gold on contact area, tin on tail
Shell: SPCC/ Nickel Plated
Board Lock: Copper Alloy/ Tin Plated
Screws: Copper Alloy/ Nickel Plated



Ordering Information

FDB 44 01 - F0 D B 3 XX XX K C
1 2 3 4 5 6 7 8 9 10 11

1	Category FDB- D-SUB Connector	2	Circuits 44-44 Circuits	3	Distinction No. 01	4	Type F0-Female	5	Assembly Layout D-DIP	6	Entry Angle B-90° Angle
7	Plating 3-Selective gold in contact area, tin on tail	8	Thickness of Plating 00-Gold Flash 03-3μ" Custom Plate Available	9	Color-Resin K6-Black U1-Blue	10	Packaging K-Tray	11	Distinction Type C-C Type		



Recommended P.C.Board Layout

 THIRD ANGLE PROJECTION	GENERAL TOLERANCES (UNLESS SPECIFIED)		APPROVE BY FRANK	DATE 28/JUN/13	PART NO. FDB4401-F0DB3XXXXKC	ITEM NO. FDB4401	 Building Technology Cornerstone
	X.±.012(0.30)	X'.±5'	CHECKED BY JACOB	DATE 28/JUN/13	TITLE D-SUB connector 44 Circuits 90° Angle Female		
DESIGN UNITS Inch (metric)	X.XX±.008(0.20)	.X'±2'	DRAWN BY CHERRY	DATE 28/JUN/13	THIS DRAWING CONTAINS INFORMATION THAT IS PROPRIETARY TO TXGA INDUSTRIAL ELECTRONICS(S.Z)CO.,LTD AND SHOULD NOT BE USED WITHOUT WRITTEN PERMISSION		
SCALE 5:1	SIZE A4	X.XXX±.004(0.10)	.XXX'±0.5'				

REV	LOCATIONS	DESCRIPTION	DATE	REVISER	APPD
1	△	1. Size changes 2. Add the "TXGA" logo	10/MAR/22	KATE	CHERRY
2	△	Add spray code	13/Jan/25	NICK	LEO

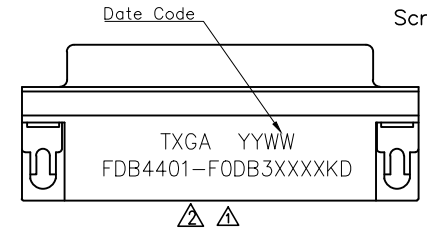
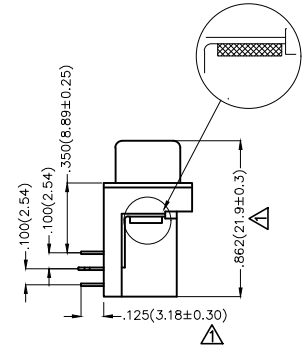
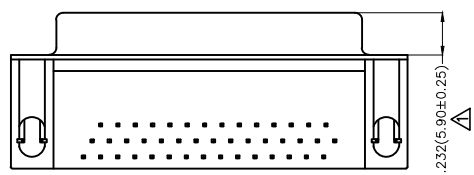
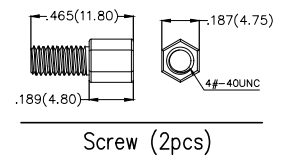
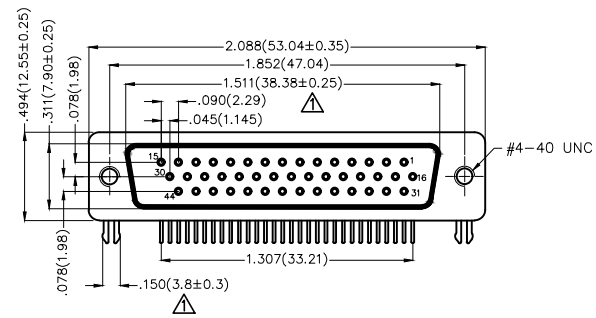
SPECIFICATIONS

Electrical

Current Rating: 3A AC(rms)/DC
Voltage Rating: 250V AC(rms)/DC
Contact Resistance: 30 mΩ Max
Insulation Resistance: 1000 MΩ Min
Withstanding Voltage: 500V AC r.m.s
Temperature Range—Operating: -55°C~+105°C

Material and plating

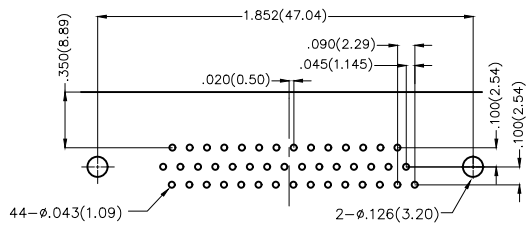
Housing: PBT UL 94V-0
Contact: Copper Alloy/
Selective gold on contact area, tin on tail
Shell: SPCC/ Nickel Plated
Board Lock: Copper Alloy/ Tin Plated
Screws: Copper Alloy/ Nickel Plated



Ordering Information

FDB 44 01 - F0 D B 3 XX XX K D
1 2 3 4 5 6 7 8 9 10 11

1 Category FDB- D-SUB Connector	2 Circuits 44-44 Circuits	3 Distinction No. 01	4 Type F0-Female	5 Assembly Layout D-DIP	6 Entry Angle B-90° Angle
7 Plating 3-Selective gold on contact area, tin on tail	8 Thickness of Plating 00-Gold Flash 03-3μ" Custom Plate Available	9 Color-Resin K6-Black U1-Blue	10 Packaging K-Tray	11 Distinction Type D-D Type	



Recommended P.C.Board Layout

THIRD ANGLE PROJECTION	GENERAL TOLERANCES (UNLESS SPECIFIED)		APPROVE BY FRANK	DATE 28/JUN/13	PART NO. FDB4401-F0DB3XXXXKD	ITEM NO. FDB4401	 Building Technology Cornerstone	
	DESIGN UNITS Inch (metric)	X.±.012(0.30) X.X±.008(0.20) X.XX±.006(0.15) X.XXX±.004(0.10)	X'.±5' .X'±2' .XX'±1' .XXX'±0.5'	CHECKED BY JACOB	DATE 28/JUN/13	TITLE D-SUB connector 44 Circuits 90° Angle Female		REV 2
SCALE 5:1	SIZE A4	DRAWN BY CHERRY		DATE 28/JUN/13	THIS DRAWING CONTAINS INFORMATION THAT IS PROPRIETARY TO TXGA INDUSTRIAL ELECTRONICS(S.Z)CO.,LTD AND SHOULD NOT BE USED WITHOUT WRITTEN PERMISSION			

REV	LOCATIONS	DESCRIPTION	DATE	REVISER	APPD
1	△	Material changes	16/NOV/23	MATT	LEO
2	△	Add spray code	13/Jan/25	NICK	LEO

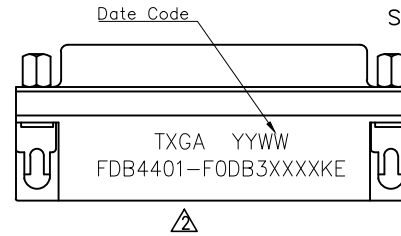
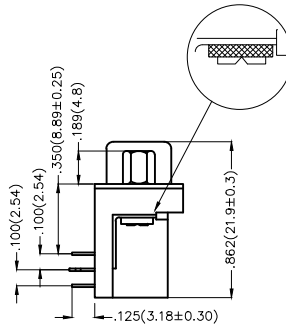
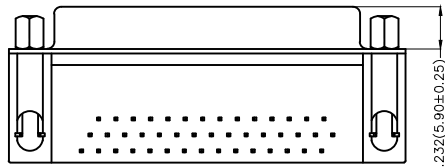
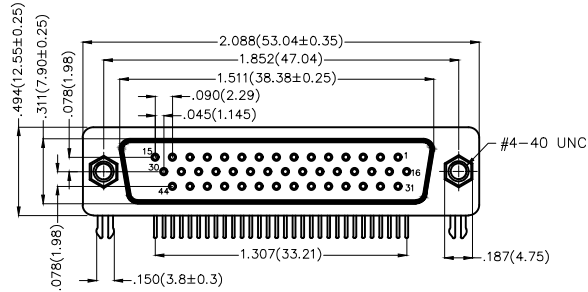
SPECIFICATIONS

Electrical

Current Rating: 3A AC(rms)/DC
Voltage Rating: 250V AC(rms)/DC
Contact Resistance: 30 mΩ Max
Insulation Resistance: 1000 MΩ Min
Withstanding Voltage: 500V AC r.m.s
Temperature Range—Operating: -55°C~+105°C

Material and plating

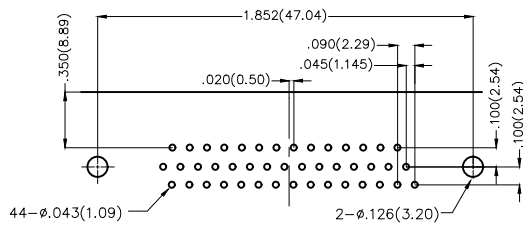
Housing: PBT UL 94V-0
Contact: Copper Alloy/
Selective gold on contact area, tin on tail
Shell: SPCC/ Nickel Plated
Board Lock: SPCC/ Tin Plated △
Screws: Steel/ Nickel Plated △



Ordering Information

FDB 44 01 - F0 D B 3 XX XX K E
1 2 3 4 5 6 7 8 9 10 11

1	Category FDB- D-SUB Connector	2	Circuits 44-44 Circuits	3	Distinction No. 01	4	Type F0-Female	5	Assembly Layout D-DIP	6	Entry Angle B-90° Angle
7	Plating 3-Selective gold in contact area, tin on tail	8	Thickness of Plating 00-Gold Flash 03-3μ" Custom Plate Available	9	Color-Resin K6-Black U1-Blue	10	Packaging K-Tray	11	Distinction Type E-E Type		



Recommended P.C.Board Layout

THIRD ANGLE PROJECTION	GENERAL TOLERANCES (UNLESS SPECIFIED)		APPROVE BY FRANK	DATE 28/JUN/13	PART NO. FDB4401-F0DB3XXXXKE	ITEM NO. FDB4401	 Building Technology Cornerstone	
	DESIGN UNITS Inch (metric)	X.±.012(0.30) X.X±.008(0.20) X.XX±.006(0.15) X.XXX±.004(0.10)	X.'±5' .X'±2' .XX'±1' .XXX'±0.5'	CHECKED BY JACOB	DATE 28/JUN/13	TITLE D-SUB connector 44 Circuits 90° Angle Female		REV 2
SCALE 5:1	SIZE A4	DRAWN BY CHERRY		DATE 28/JUN/13	THIS DRAWING CONTAINS INFORMATION THAT IS PROPRIETARY TO TXGA INDUSTRIAL ELECTRONICS(S.Z)CO.,LTD AND SHOULD NOT BE USED WITHOUT WRITTEN PERMISSION			

REV	LOCATIONS	DESCRIPTION	DATE	REVISER	APPD
1	△	Material changes	16/NOV/23	MATT	LEO
2	△	Add spray code	13/Jan/25	NICK	LEO

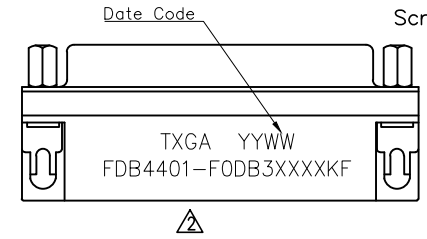
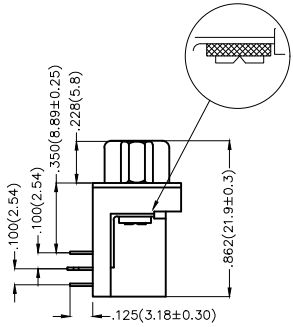
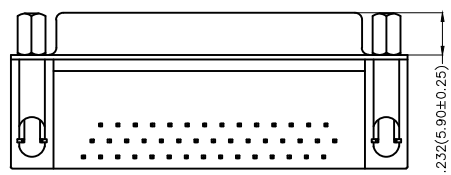
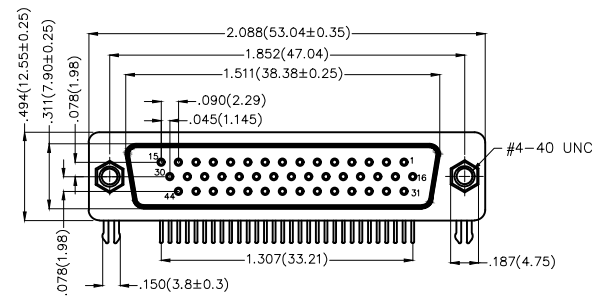
SPECIFICATIONS

Electrical

Current Rating: 3A AC(rms)/DC
Voltage Rating: 250V AC(rms)/DC
Contact Resistance: 30 mΩ Max
Insulation Resistance: 1000 MΩ Min
Withstanding Voltage: 500V AC r.m.s
Temperature Range—Operating: -55°C~+105°C

Material and plating

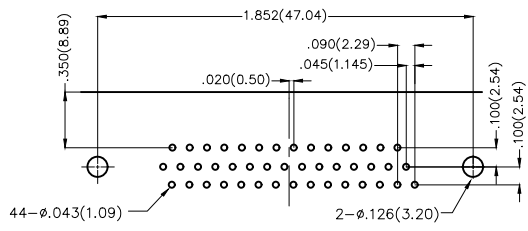
Housing: PBT UL 94V-0
Contact: Copper Alloy/
Selective gold on contact area, tin on tail
Shell: SPCC/ Nickel Plated
Board Lock: SPCC/ Tin Plated △
Screws: Steel/ Nickel Plated △



Ordering Information

FDB 44 01 - F0 D B 3 XX XX K F
1 2 3 4 5 6 7 8 9 10 11

1	Category FDB- D-SUB Connector	2	Circuits 44-44 Circuits	3	Distinction No. 01	4	Type F0-Female	5	Assembly Layout D-DIP	6	Entry Angle B-90° Angle
7	Plating 3-Selective gold in contact area, tin on tail	8	Thickness of Plating 00-Gold Flash 03-3μ" Custom Plate Available	9	Color-Resin K6-Black U1-Blue	10	Packaging K-Tray	11	Distinction Type F-F Type		



Recommended P.C.Board Layout

THIRD ANGLE PROJECTION	GENERAL TOLERANCES (UNLESS SPECIFIED)		APPROVE BY FRANK	DATE 28/JUN/13	PART NO. FDB4401-F0DB3XXXXKF	ITEM NO. FDB4401	 Building Technology Cornerstone	
	DESIGN UNITS Inch (metric)	X.±.012(0.30) X.X±.008(0.20) X.XX±.006(0.15) X.XXX±.004(0.10)	X.'±5' .X'±2' .XX'±1' .XXX'±0.5'	CHECKED BY JACOB	DATE 28/JUN/13	TITLE D-SUB connector 44 Circuits 90° Angle Female		REV 2
SCALE 5:1	SIZE A4	DRAWN BY CHERRY		DATE 28/JUN/13	THIS DRAWING CONTAINS INFORMATION THAT IS PROPRIETARY TO TXGA INDUSTRIAL ELECTRONICS(S.Z)CO.,LTD AND SHOULD NOT BE USED WITHOUT WRITTEN PERMISSION			

REV	LOCATIONS	DESCRIPTION	DATE	REVISER	APPD

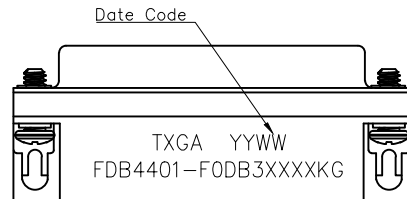
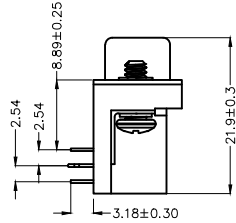
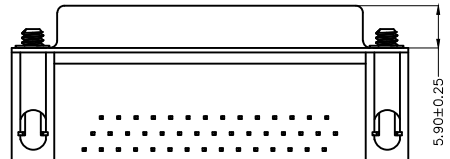
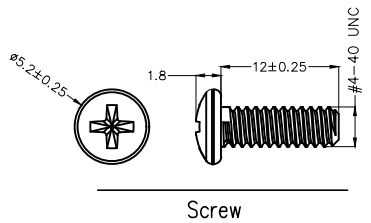
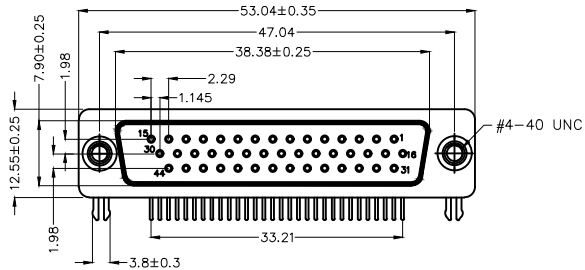
SPECIFICATIONS

Electrical

Current Rating: 3A AC(rms)/DC
 Voltage Rating: 250V AC(rms)/DC
 Contact Resistance: 30 mΩ Max
 Insulation Resistance: 1000 MΩ Min
 Withstanding Voltage: 500V AC r.m.s
 Temperature Range-Operating: -55°C~+105°C

Material and plating

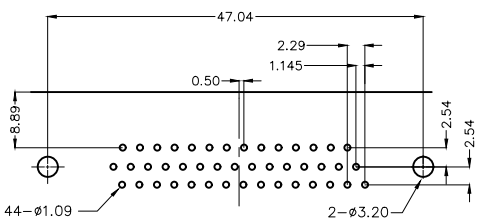
Housing: PBT UL 94V-0
 Contact: Copper Alloy/
 Selective gold on contact area, tin on tail
 Shell: SPCC/ Nickel Plated
 Board Lock: SPCC/ Tin Plated
 Screws: Steel/ Nickel Plated



Ordering Information

FDB 44 01 - F0 D B 3 XX XX K G
 1 2 3 4 5 6 7 8 9 10 11

1 Category FDB- D-SUB Connector	2 Circuits 44-44 Circuits	3 Distinction No. 01	4 Type FO-Female	5 Assembly Layout D-DIP	6 Entry Angle B-90° Angle
7 Plating 3-Selective gold in contact area, tin on tail	8 Thickness of Plating 00-Gold Flash 03-3μ" Custom Plate Available	9 Color-Resin K6-Black U1-Blue	10 Packaging K-Tray	11 Distinction Type G-G Type	



Recommended P.C.Board Layout

<p>THIRD ANGLE PROJECTION</p>	GENERAL TOLERANCES (UNLESS SPECIFIED) X. ±0.30 X.* ±5° X.X ±0.20 X.X* ±2° X.XX ±0.15 X.XX* ±1° X.XXX ±0.10 X.XXX* ±0.5°		APPROVE BY LEO DATE 19/NOV/24	PART NO. FDB4401-F0DB3XXXXKG ITEM NO. FDB4401	<p>Building Technology Cornerstone</p>
	DESIGN UNITS Metric(mm)	CHECKED BY GISELLE DATE 19/NOV/24	TITLE D-SUB connector 44 Circuits 90° Angle Female	REV 0 SHEET NO. 1/1	
SCALE 5:1	SIZE A4	DRAWN BY MATT DATE 19/NOV/24	THIS DRAWING CONTAINS INFORMATION THAT IS PROPRIETARY TO TXGA INDUSTRIAL ELECTRONICS(S.Z)CO.,LTD AND SHOULD NOT BE USED WITHOUT WRITTEN PERMISSION		

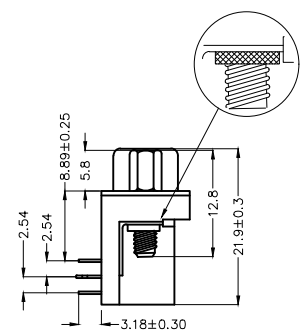
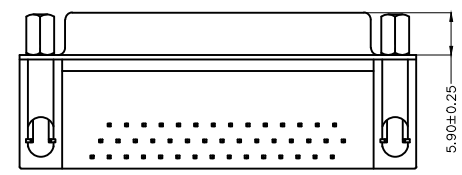
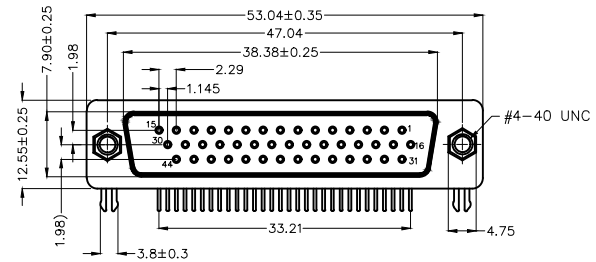
1 2 3 4 5 6 7 8

REV	LOCATIONS	DESCRIPTION	DATE	REVISER	APPD

SPECIFICATIONS

Electrical
 Current Rating: 3A AC(rms)/DC
 Voltage Rating: 250V AC(rms)/DC
 Contact Resistance: 30 mΩ Max
 Insulation Resistance: 1000 MΩ Min
 Withstanding Voltage: 500V AC r.m.s
 Temperature Range—Operating: -55°C~+105°C

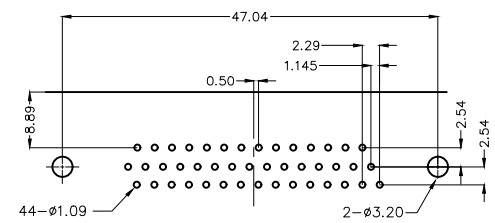
Material and plating
 Housing: PBT UL 94V-0
 Contact: Copper Alloy/
 Selective gold on contact area, tin on tail
 Shell: SPCC/ Nickel Plated
 Board Lock: Copper Alloy/ Tin Plated
 Screws: Copper Alloy/ Nickel Plated
 Salt spray : 48H



Ordering Information

FDB 44 01 - F0 D B 3 XX XX K H
 1 2 3 4 5 6 7 8 9 10 11

1 Category FDB- D-SUB Connector	2 Circuits 44-44 Circuits	3 Distinction No. 01	4 Type F0-Female	5 Assembly Layout D-DIP	6 Entry Angle B-90° Angle
7 Plating 3-Selective gold in contact area, tin on tail	8 Thickness of Plating 00-Gold Flash 03-3μ" Custom Plate Available	9 Color-Resin K6-Black U1-Blue	10 Packaging K-Tray	11 Distinction Type H-H Type	



Recommended P.C.Board Layout

 THIRD ANGLE PROJECTION	GENERAL TOLERANCES (UNLESS SPECIFIED)		APPROVE BY LEO	DATE 28/NOV/24	PART NO. FDB4401-F0DB3XXXXKH	ITEM NO. FDB4401	 Building Technology Cornerstone	
	X.X ±0.30	X.' ±5'	CHECKED BY GISELLE	DATE 28/NOV/24	TITLE D-SUB connector 44 Circuits 90° Angle Female			REV 0
	DESIGN UNITS Inch (metric)	X.XX ±0.15	X.XX' ±1'	DRAWN BY NICK	DATE 28/NOV/24	THIS DRAWING CONTAINS INFORMATION THAT IS PROPRIETARY TO TXGA INDUSTRIAL ELECTRONICS(S.Z)CO.,LTD AND SHOULD NOT BE USED WITHOUT WRITTEN PERMISSION		

1 2 3 4 5 6 7 8