

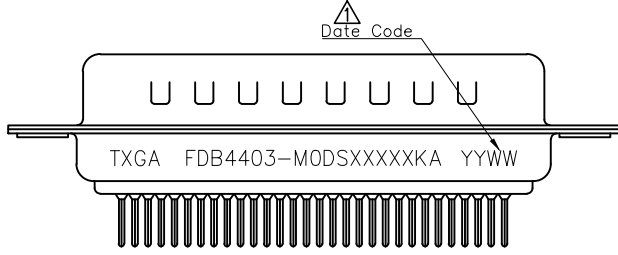
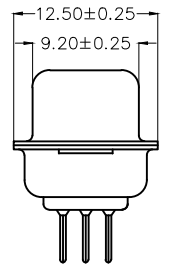
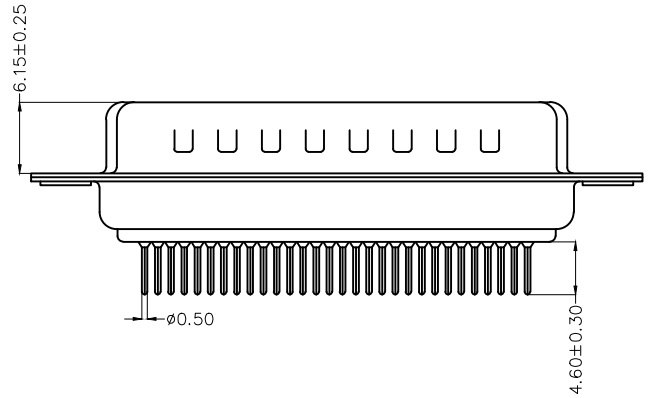
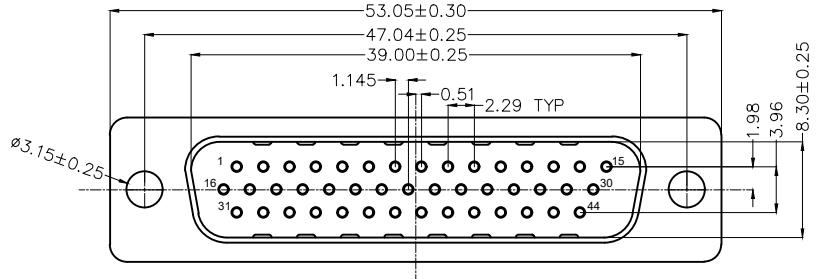
1 2 3 4 5 6 7 8

REV	LOCATIONS	DESCRIPTION	DATE	REVISER	APPD
1	△	Add spray code	13/Jan/25	NICK	LEO

**SPECIFICATIONS**

**Electrical**  
 Current Rating: 3A AC(rms)/DC  
 Voltage Rating: 250V AC(rms)/DC  
 Contact Resistance: 30 mΩ Max  
 Insulation Resistance: 1000 MΩ Min  
 Withstanding Voltage: 500V AC r.m.s  
 Temperature Range-Operating: -55°C~+105°C

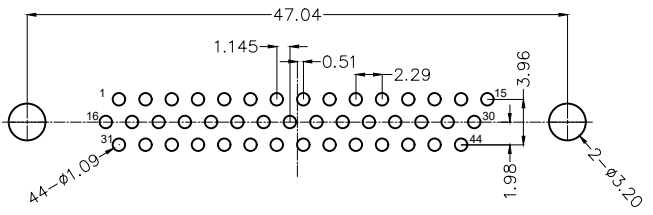
**Material and plating**  
 Housing: PBT UL 94V-0  
 Contact: Copper Alloy/ Gold plating or Selective gold in contact area, tin on tail  
 Shell: SPCC/ Nickel plating on the front shell and tin plating on the back shell



**Ordering Information**

FDB 44 03 - M0 D S X XX XX K A  
 1 2 3 4 5 6 7 8 9 10 11

1 Category FDB- D-SUB Connector	2 Circuits 44-44 Circuits	3 Distinction No. 03	4 Type M0-Male	5 Assembly Layout D-DIP	6 Entry Angle S-180° Vertical
7 Plating 1-Gold plated 3-Selective gold in contact area, tin on tail	8 Thickness of Plating 00-Gold Flash 03-3μ" Custom Plate Available	9 Color-Resin BK-Black BU-Blue	10 Packaging K-Tray	11 Distinction Type A-A Type	



Recommended P.C.Board Layout

THIRD ANGLE PROJECTION	GENERAL TOLERANCES (UNLESS SPECIFIED)		APPROVE BY LEO	DATE 19/NOV/24	PART NO. FDB4403-MODSXXXXXKA	ITEM NO. FDB4403	 Building Technology Cornerstone
	X. ±0.30	X.' ±5'	CHECKED BY GISELLE	DATE 19/NOV/24	TITLE D-SUB connector 44 Circuits 180° Vertical Male(DIP)		
DESIGN UNITS Metric(mm)	X.X ±0.20	X.X' ±2'	DRAWN BY MATT	DATE 19/NOV/24	THIS DRAWING CONTAINS INFORMATION THAT IS PROPRIETARY TO TXGA INDUSTRIAL ELECTRONICS(S.Z)CO.,LTD AND SHOULD NOT BE USED WITHOUT WRITTEN PERMISSION		
SCALE 5:1	SIZE A4	X.XX ±0.15 X.XXX ±0.10					

1 2 3 4 5 6 7 8

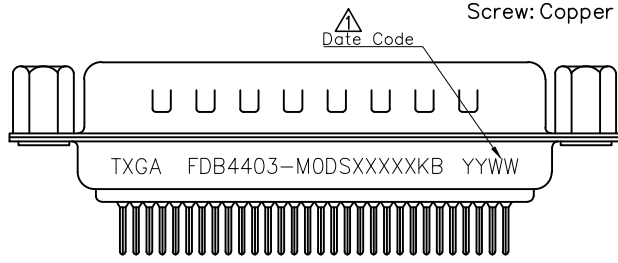
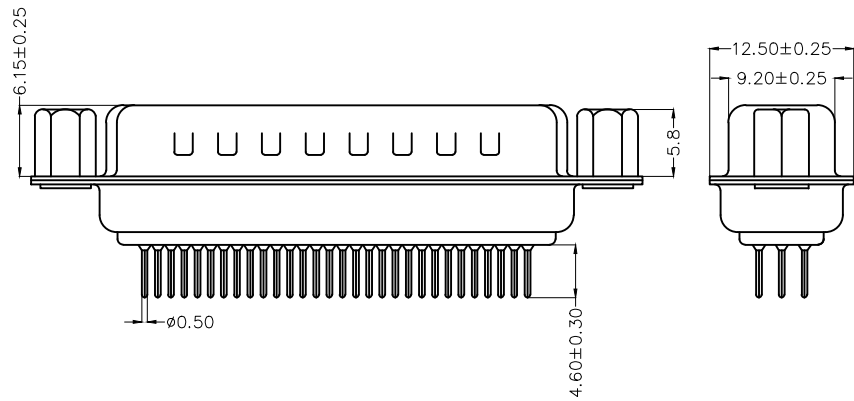
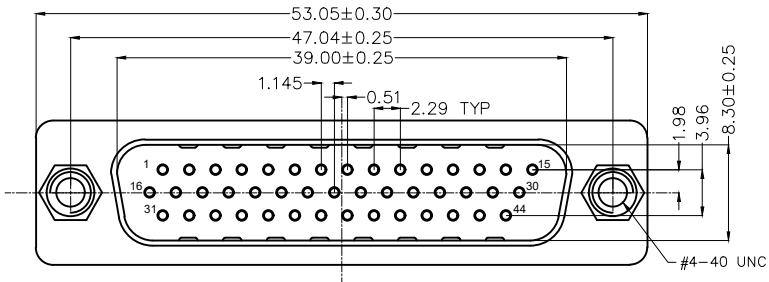
1 2 3 4 5 6 7 8

REV	LOCATIONS	DESCRIPTION	DATE	REVISOR	APPD
1	△	Add spray code	13/Jan/25	NICK	LEO

**SPECIFICATIONS**

**Electrical**  
 Current Rating: 3A AC(rms)/DC  
 Voltage Rating: 250V AC(rms)/DC  
 Contact Resistance: 30 mΩ Max  
 Insulation Resistance: 1000 MΩ Min  
 Withstanding Voltage: 500V AC r.m.s  
 Temperature Range-Operating: -55°C~+105°C

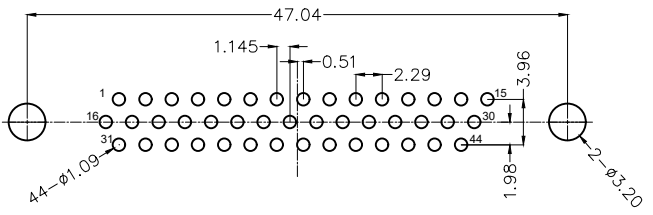
**Material and plating**  
 Housing: PBT UL 94V-0  
 Contact: Copper Alloy/ Gold plating or Selective gold in contact area, tin on tail  
 Shell: SPCC/ Nickel plating on the front shell and tin plating on the back shell  
 Screw: Copper Alloy/ Nickel Plated



**Ordering Information**

FDB 44 03 - M0 D S X XX XX K B  
 1 2 3 4 5 6 7 8 9 10 11

1 Category FDB- D-SUB Connector	2 Circuits 44-44 Circuits	3 Distinction No. 03	4 Type M0-Male	5 Assembly Layout D-DIP	6 Entry Angle S-180° Vertical
7 Plating 1-Gold plated 3-Selective gold in contact area, tin on tail	8 Thickness of Plating 00-Gold Flash 03-3μ" Custom Plate Available	9 Color-Resin BK-Black BU-Blue	10 Packaging K-Tray	11 Distinction Type B-B Type	



Recommended P.C.Board Layout

<p>THIRD ANGLE PROJECTION</p>	GENERAL TOLERANCES (UNLESS SPECIFIED) X. ±0.30 X.' ±5' X.X ±0.20 X.X' ±2' X.XX ±0.15 X.XX' ±1' X.XXX ±0.10 X.XXX' ±0.5'		APPROVE BY LEO DATE 19/NOV/24	PART NO. FDB4403-MODSXXXXXXKB ITEM NO. FDB4403	<p>Building Technology Cornerstone</p>
	DESIGN UNITS Metric(mm)	CHECKED BY GISELLE DATE 19/NOV/24	TITLE D-SUB connector 44 Circuits 180° Vertical Male(DIP)	REV 1 SHEET NO. 1/1	
SCALE 5:1	SIZE A4	DRAWN BY MATT DATE 19/NOV/24	THIS DRAWING CONTAINS INFORMATION THAT IS PROPRIETARY TO TXGA INDUSTRIAL ELECTRONICS(S.Z)CO.,LTD AND SHOULD NOT BE USED WITHOUT WRITTEN PERMISSION		

1 2 3 4 5 6 7 8

1 2 3 4 5 6 7 8

REV	LOCATIONS	DESCRIPTION	DATE	REVISOR	APPD
1	△	Add spray code	13/Jan/25	NICK	LEO

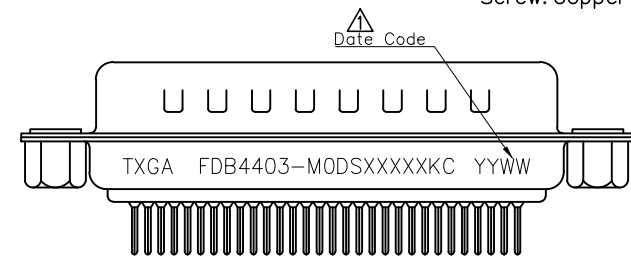
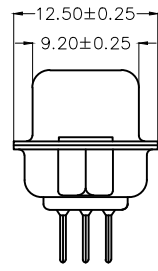
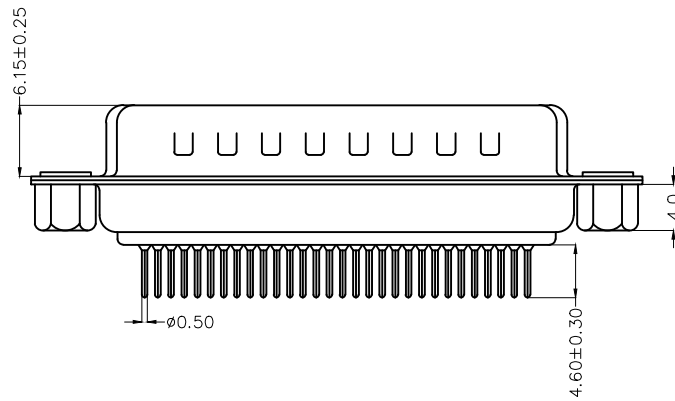
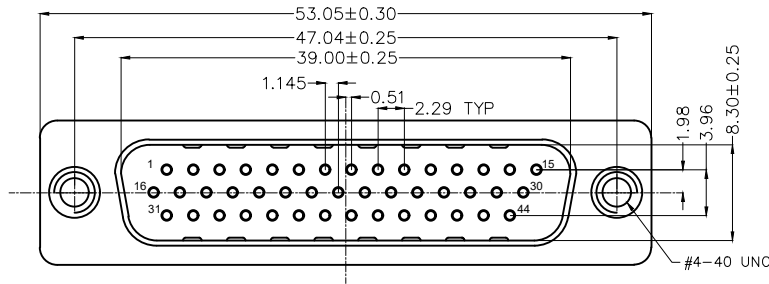
SPECIFICATIONS

Electrical

Current Rating: 3A AC(rms)/DC  
 Voltage Rating: 250V AC(rms)/DC  
 Contact Resistance: 30 mΩ Max  
 Insulation Resistance: 1000 MΩ Min  
 Withstanding Voltage: 500V AC r.m.s  
 Temperature Range-Operating: -55°C~+105°C

Material and plating

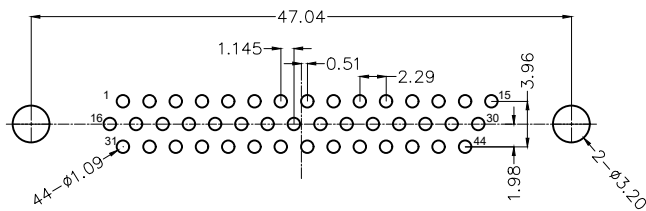
Housing: PBT UL 94V-0  
 Contact: Copper Alloy/ Gold plating or Selective gold in contact area, tin on tail  
 Shell: SPCC/ Nickel plating on the front shell and tin plating on the back shell  
 Screw: Copper Alloy/ Nickel Plated



Ordering Information

FDB 44 03 - M0 D S X XX XX K C  
 1 2 3 4 5 6 7 8 9 10 11

1 Category FDB- D-SUB Connector	2 Circuits 44-44 Circuits	3 Distinction No. 03	4 Type M0-Male	5 Assembly Layout D-DIP	6 Entry Angle S-180° Vertical
7 Plating 1-Gold plated 3-Selective gold in contact area, tin on tail	8 Thickness of Plating 00-Gold Flash 03-3μ" Custom Plate Available	9 Color-Resin BK-Black BU-Blue	10 Packaging K-Tray	11 Distinction Type C-C Type	



Recommended P.C.Board Layout

<p>THIRD ANGLE PROJECTION</p>	GENERAL TOLERANCES (UNLESS SPECIFIED) X. ±0.30 X.' ±5' X.X ±0.20 X.X' ±2' X.XX ±0.15 X.XX' ±1' X.XXX ±0.10 X.XXX' ±0.5'		APPROVE BY LEO DATE 19/NOV/24	PART NO. FDB4403-MODSXXXXXKC ITEM NO. FDB4403	<p>Building Technology Cornerstone</p>
	DESIGN UNITS Metric(mm)	CHECKED BY GISELLE DATE 19/NOV/24	TITLE D-SUB connector 44 Circuits 180° Vertical Male(DIP)	REV 1 SHEET NO. 1/1	
SCALE 5:1	SIZE A4	DRAWN BY MATT DATE 19/NOV/24	THIS DRAWING CONTAINS INFORMATION THAT IS PROPRIETARY TO TXGA INDUSTRIAL ELECTRONICS(S.Z)CO.,LTD AND SHOULD NOT BE USED WITHOUT WRITTEN PERMISSION		

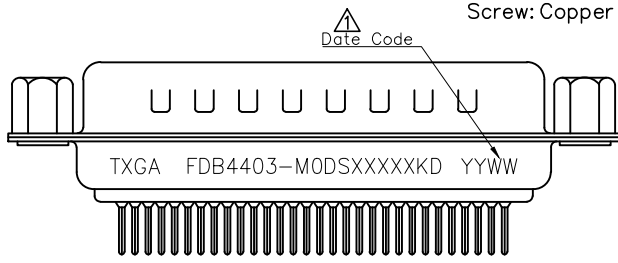
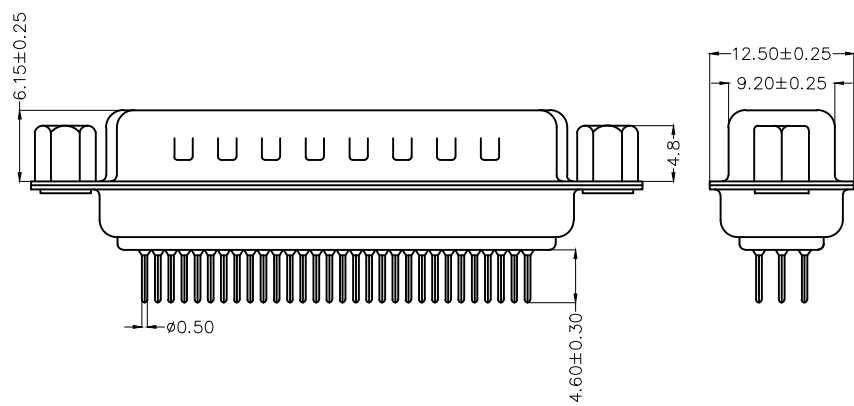
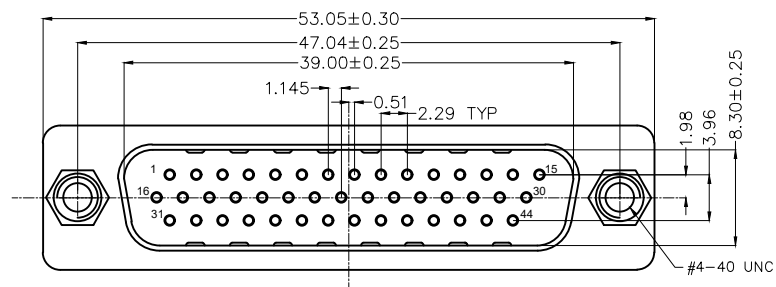
1 2 3 4 5 6 7 8

REV	LOCATIONS	DESCRIPTION	DATE	REVISOR	APPD
1	△	Add spray code	13/Jan/25	NICK	LEO

**SPECIFICATIONS**

**Electrical**  
 Current Rating: 3A AC(rms)/DC  
 Voltage Rating: 250V AC(rms)/DC  
 Contact Resistance: 30 mΩ Max  
 Insulation Resistance: 1000 MΩ Min  
 Withstanding Voltage: 500V AC r.m.s  
 Temperature Range-Operating: -55°C~+105°C

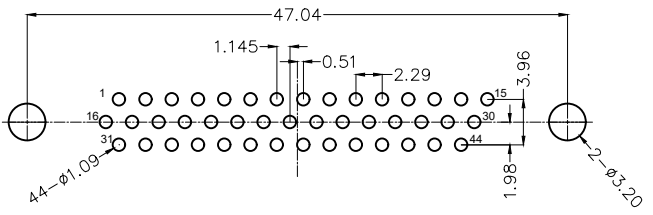
**Material and plating**  
 Housing: PBT UL 94V-0  
 Contact: Copper Alloy/ Gold plating or Selective gold in contact area, tin on tail  
 Shell: SPCC/ Nickel plating on the front shell and tin plating on the back shell  
 Screw: Copper Alloy/ Nickel Plated



**Ordering Information**

FDB 44 03 - M0 D S X XX XX K D  
 1 2 3 4 5 6 7 8 9 10 11

1 Category FDB- D-SUB Connector	2 Circuits 44-44 Circuits	3 Distinction No. 03	4 Type M0-Male	5 Assembly Layout D-DIP	6 Entry Angle S-180° Vertical
7 Plating 1-Gold plated 3-Selective gold in contact area, tin on tail	8 Thickness of Plating 00-Gold Flash 03-3μ" Custom Plate Available	9 Color-Resin BK-Black BU-Blue	10 Packaging K-Tray	11 Distinction Type D-D Type	



Recommended P.C.Board Layout

THIRD ANGLE PROJECTION	GENERAL TOLERANCES (UNLESS SPECIFIED)		APPROVE BY LEO	DATE 19/NOV/24	PART NO. FDB4403-MODSXXXXXKD	ITEM NO. FDB4403	
	X. ±0.30	X.' ±5'	CHECKED BY GISELLE	DATE 19/NOV/24	TITLE D-SUB connector 44 Circuits 180° Vertical Male(DIP)		
DESIGN UNITS Metric(mm)	X.X ±0.20	X.X' ±2'	DRAWN BY MATT	DATE 19/NOV/24	THIS DRAWING CONTAINS INFORMATION THAT IS PROPRIETARY TO TXGA INDUSTRIAL ELECTRONICS(S.Z)CO.,LTD AND SHOULD NOT BE USED WITHOUT WRITTEN PERMISSION		
SCALE 5:1	SIZE A4	X.XX ±0.15 X.XXX ±0.10	X.XX' ±1' X.XXX' ±0.5'				

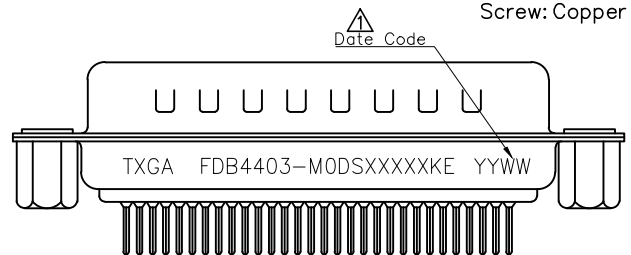
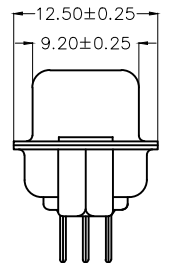
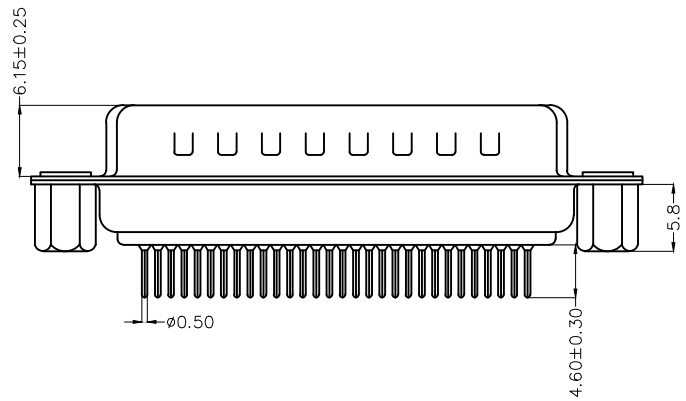
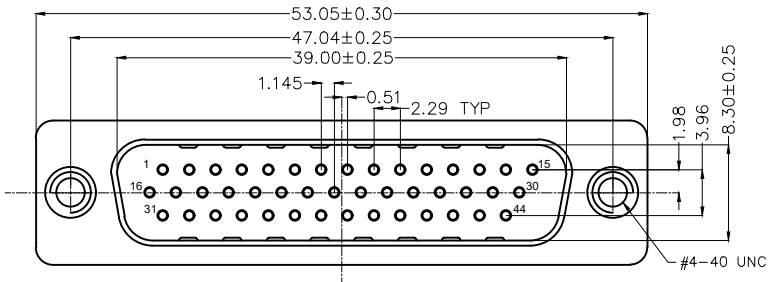
1 2 3 4 5 6 7 8

REV	LOCATIONS	DESCRIPTION	DATE	REVISOR	APPD
1	△	Add spray code	13/Jan/25	NICK	LEO

**SPECIFICATIONS**

**Electrical**  
 Current Rating: 3A AC(rms)/DC  
 Voltage Rating: 250V AC(rms)/DC  
 Contact Resistance: 30 mΩ Max  
 Insulation Resistance: 1000 MΩ Min  
 Withstanding Voltage: 500V AC r.m.s  
 Temperature Range-Operating: -55°C~+105°C

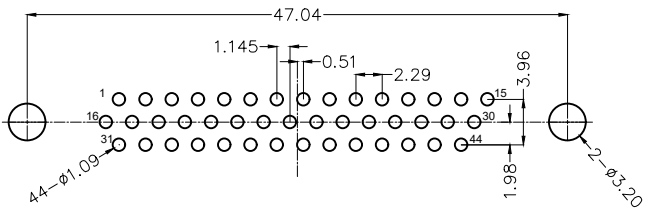
**Material and plating**  
 Housing: PBT UL 94V-0  
 Contact: Copper Alloy/ Gold plating or Selective gold in contact area, tin on tail  
 Shell: SPCC/ Nickel plating on the front shell and tin plating on the back shell  
 Screw: Copper Alloy/ Nickel Plated



**Ordering Information**

FDB 44 03 - M0 D S X XX XX K E  
 1 2 3 4 5 6 7 8 9 10 11

1 Category FDB- D-SUB Connector	2 Circuits 44-44 Circuits	3 Distinction No. 03	4 Type M0-Male	5 Assembly Layout D-DIP	6 Entry Angle S-180° Vertical
7 Plating 1-Gold plated 3-Selective gold in contact area, tin on tail	8 Thickness of Plating 00-Gold Flash 03-3μ" Custom Plate Available	9 Color-Resin BK-Black BU-Blue	10 Packaging K-Tray	11 Distinction Type E-E Type	



Recommended P.C.Board Layout

THIRD ANGLE PROJECTION	GENERAL TOLERANCES (UNLESS SPECIFIED)		APPROVE BY LEO	DATE 19/NOV/24	PART NO. FDB4403-MODSXXXXXXKE	ITEM NO. FDB4403	
	X. ±0.30	X.' ±5'	CHECKED BY GISELLE	DATE 19/NOV/24	TITLE D-SUB connector 44 Circuits 180° Vertical Male(DIP)		
DESIGN UNITS Metric(mm)	X.X ±0.20	X.X' ±2'	DRAWN BY MATT	DATE 19/NOV/24	THIS DRAWING CONTAINS INFORMATION THAT IS PROPRIETARY TO TXGA INDUSTRIAL ELECTRONICS(S.Z)CO.,LTD AND SHOULD NOT BE USED WITHOUT WRITTEN PERMISSION		
SCALE 5:1	SIZE A4	X.XX ±0.15 X.XXX ±0.10					

1 2 3 4 5 6 7 8

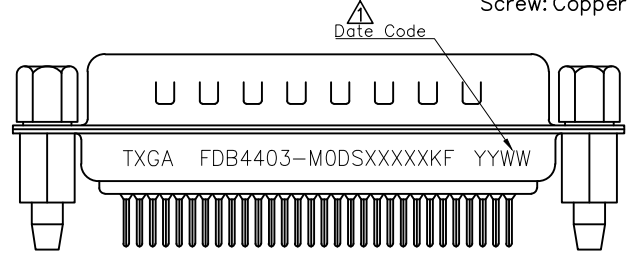
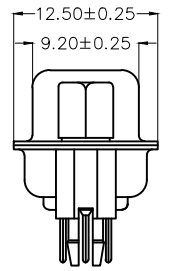
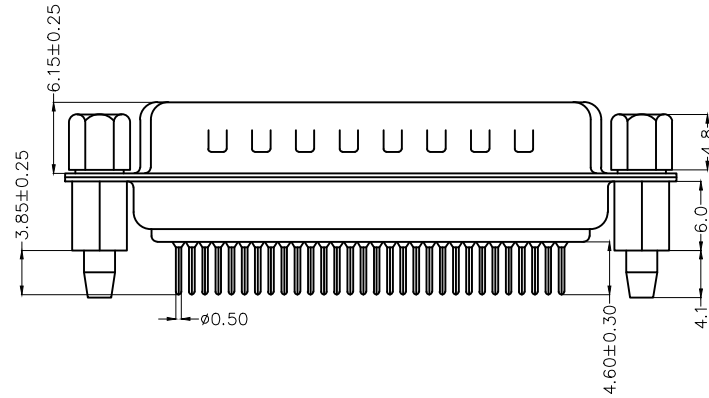
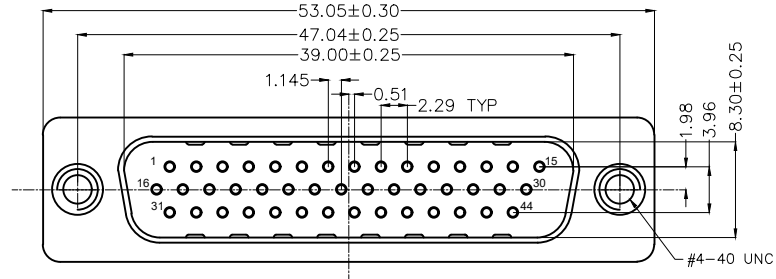
1 2 3 4 5 6 7 8

REV	LOCATIONS	DESCRIPTION	DATE	REVISOR	APPD
1	△	Add spray code	13/Jan/25	NICK	LEO

**SPECIFICATIONS**

**Electrical**  
 Current Rating: 3A AC(rms)/DC  
 Voltage Rating: 250V AC(rms)/DC  
 Contact Resistance: 30 mΩ Max  
 Insulation Resistance: 1000 MΩ Min  
 Withstanding Voltage: 500V AC r.m.s  
 Temperature Range-Operating: -55°C~+105°C

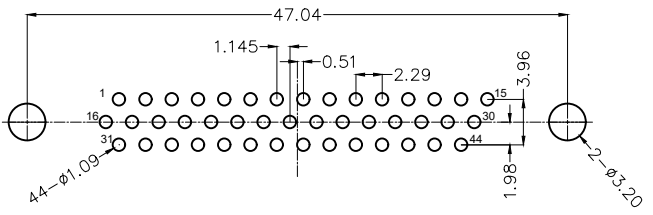
**Material and plating**  
 Housing: PBT UL 94V-0  
 Contact: Copper Alloy/ Gold plating or Selective gold in contact area, tin on tail  
 Shell: SPCC/ Nickel plating on the front shell and tin plating on the back shell  
 Screw: Copper Alloy/ Nickel Plated



**Ordering Information**

FDB 44 03 - M0 D S X XX XX K F  
 1 2 3 4 5 6 7 8 9 10 11

1 Category FDB- D-SUB Connector	2 Circuits 44-44 Circuits	3 Distinction No. 03	4 Type M0-Male	5 Assembly Layout D-DIP	6 Entry Angle S-180° Vertical
7 Plating 1-Gold plated 3-Selective gold in contact area, tin on tail	8 Thickness of Plating 00-Gold Flash 03-3µ" Custom Plate Available	9 Color-Resin BK-Black BU-Blue	10 Packaging K-Tray	11 Distinction Type F-F Type	



Recommended P.C.Board Layout

 THIRD ANGLE PROJECTION	GENERAL TOLERANCES (UNLESS SPECIFIED)		APPROVE BY LEO	DATE 19/NOV/24	PART NO. FDB4403-MODSXXXXXKF	ITEM NO. FDB4403	 Building Technology Cornerstone
	X. ±0.30	X.' ±5'	CHECKED BY GISELLE	DATE 19/NOV/24	TITLE D-SUB connector 44 Circuits 180° Vertical Male(DIP)		
DESIGN UNITS Metric(mm)	X.X ±0.20	X.X' ±2'	DRAWN BY MATT	DATE 19/NOV/24	THIS DRAWING CONTAINS INFORMATION THAT IS PROPRIETARY TO TXGA INDUSTRIAL ELECTRONICS(S.Z)CO.,LTD AND SHOULD NOT BE USED WITHOUT WRITTEN PERMISSION		
SCALE 5:1	SIZE A4	X.XX ±0.15	X.XX' ±1'				
		X.XXX ±0.10	X.XXX' ±0.5'				

1 2 3 4 5 6 7 8