

REV	LOCATIONS	DESCRIPTION	DATE	REVISOR	APPD
1	△	Add spray code	13/Jan/25	NICK	LEO

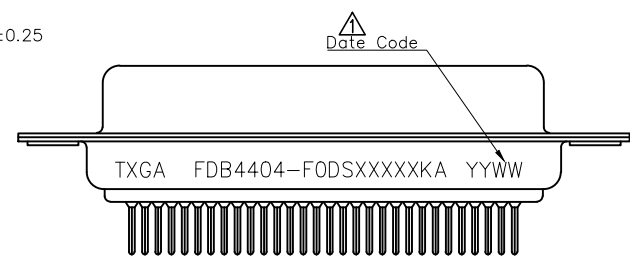
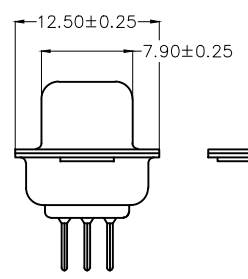
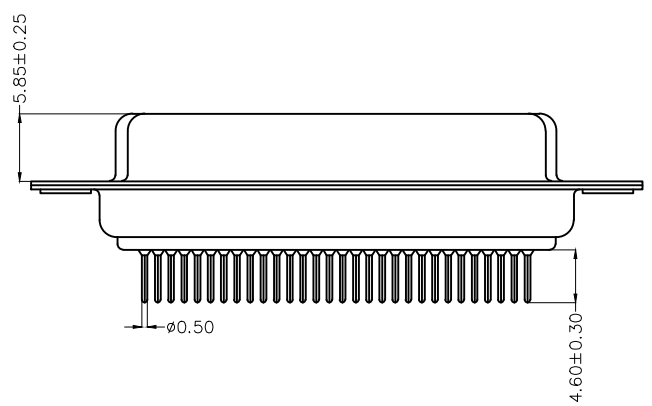
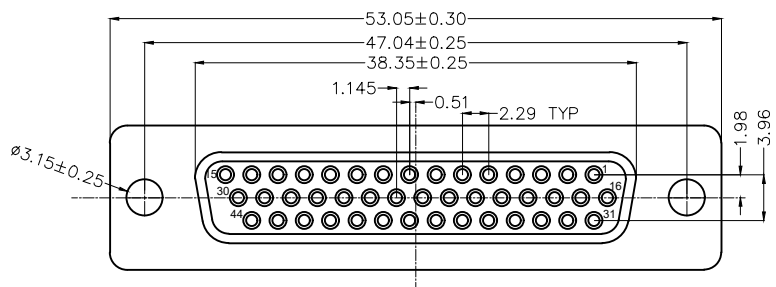
SPECIFICATIONS

Electrical

Current Rating: 3A AC(rms)/DC
Voltage Rating: 250V AC(rms)/DC
Contact Resistance: 25 mΩ Max
Insulation Resistance: 1000 MΩ Min
Withstanding Voltage: 500V AC r.m.s
Temperature Range-Operating: -55°C~+105°C

Material and plating

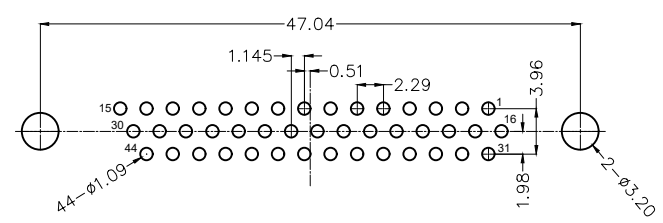
Housing: PBT UL 94V-0
Contact: Copper Alloy/ Gold plating or Selective gold in contact area, tin on tail
Shell: SPCC/ Nickel plating on the front shell and tin plating on the back shell



Ordering Information

FDB 44 04 - F0 D S X XX XX K A
1 2 3 4 5 6 7 8 9 10 11

1 Category FDB- D-SUB Connector	2 Circuits 44-44 Circuits	3 Distinction No. 04	4 Type F0-Female	5 Assembly Layout D-DIP	6 Entry Angle S-180° Vertical
7 Plating 1-Gold plated 3-Selective gold in contact area, tin on tail	8 Thickness of Plating 00-Gold Flash 03-3μ" Custom Plate Available	9 Color-Resin K6-Black U1-Blue	10 Packaging K-Tray	11 Distinction Type A-A Type	



Recommended P.C.Board Layout

<p>THIRD ANGLE PROJECTION</p>	GENERAL TOLERANCES (UNLESS SPECIFIED)		APPROVE BY LEO	DATE 19/NOV/24	PART NO. FDB4404-F0DSXXXXXKA	ITEM NO. FDB4404	<p>Building Technology Cornerstone</p>
	X. ±0.30	X.' ±5'	CHECKED BY GISELLE	DATE 19/NOV/24	TITLE D-SUB connector 44 Circuits 180° Vertical Female(DIP)		
DESIGN UNITS Metric(mm)	X.X ±0.20	X.X' ±2'	DRAWN BY MATT	DATE 19/NOV/24	THIS DRAWING CONTAINS INFORMATION THAT IS PROPRIETARY TO TXGA INDUSTRIAL ELECTRONICS(S.Z)CO.,LTD AND SHOULD NOT BE USED WITHOUT WRITTEN PERMISSION		
SCALE 5:1	SIZE A4	X.XX ±0.15	X.XX' ±1'				
		X.XXX ±0.10	X.XXX' ±0.5'				

1 2 3 4 5 6 7 8

REV	LOCATIONS	DESCRIPTION	DATE	REVISOR	APPD
1	△	Add spray code	13/Jan/25	NICK	LEO

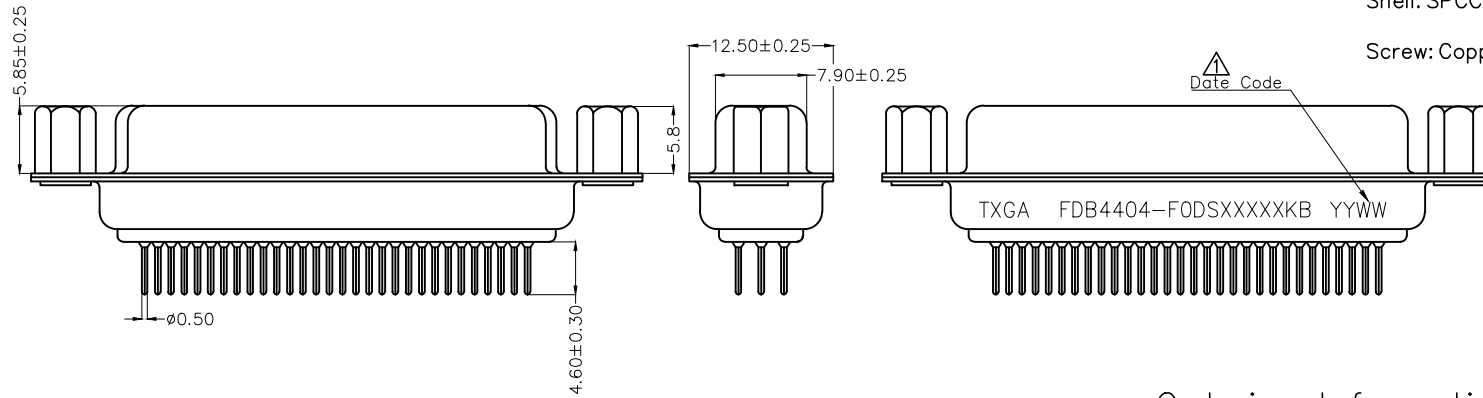
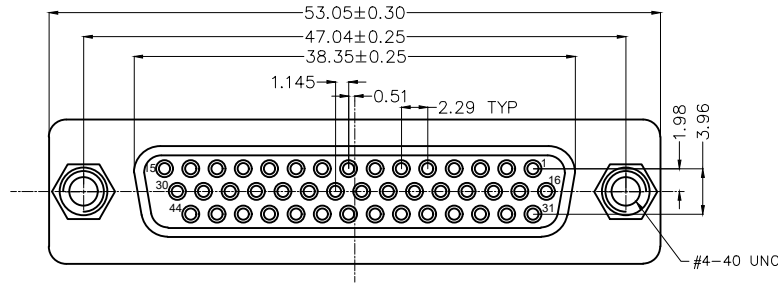
SPECIFICATIONS

Electrical

Current Rating: 3A AC(rms)/DC
 Voltage Rating: 250V AC(rms)/DC
 Contact Resistance: 25 mΩ Max
 Insulation Resistance: 1000 MΩ Min
 Withstanding Voltage: 500V AC r.m.s
 Temperature Range-Operating: -55°C~+105°C

Material and plating

Housing: PBT UL 94V-0
 Contact: Copper Alloy/ Gold plating or Selective gold in contact area, tin on tail
 Shell: SPCC/ Nickel plating on the front shell and tin plating on the back shell
 Screw: Copper Alloy/ Nickel Plated

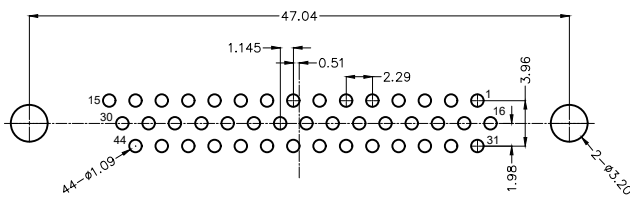


TXGA FDB4404-F0DSXXXXXB YYWW

Ordering Information

FDB 44 04 - F0 D S X XX XX K B
 1 2 3 4 5 6 7 8 9 10 11

1 Category FDB- D-SUB Connector	2 Circuits 44-44 Circuits	3 Distinction No. 04	4 Type F0-Female	5 Assembly Layout D-DIP	6 Entry Angle S-180° Vertical
7 Plating 1-Gold plated 3-Selective gold in contact area, tin on tail	8 Thickness of Plating 00-Gold Flash 03-3μ" Custom Plate Available	9 Color-Resin K6-Black U1-Blue	10 Packaging K-Tray	11 Distinction Type B-B Type	



Recommended P.C.Board Layout

<p>THIRD ANGLE PROJECTION</p>	GENERAL TOLERANCES (UNLESS SPECIFIED)		APPROVE BY LEO	DATE 19/NOV/24	PART NO. FDB4404-F0DSXXXXXB	ITEM NO. FDB4404	<p>Building Technology Cornerstone</p>
	X. ±0.30	X.' ±5'	CHECKED BY GISELLE	DATE 19/NOV/24	TITLE D-SUB connector 44 Circuits 180° Vertical Female(DIP)		
DESIGN UNITS Metric(mm)	X.X ±0.20	X.X' ±2'	DRAWN BY MATT	DATE 19/NOV/24	THIS DRAWING CONTAINS INFORMATION THAT IS PROPRIETARY TO TXGA INDUSTRIAL ELECTRONICS(S.Z)CO.,LTD AND SHOULD NOT BE USED WITHOUT WRITTEN PERMISSION		
SCALE 5:1	SIZE A4	X.XX ±0.15	X.XX' ±1'				
		X.XXX ±0.10	X.XXX' ±0.5'				

1 2 3 4 5 6 7 8

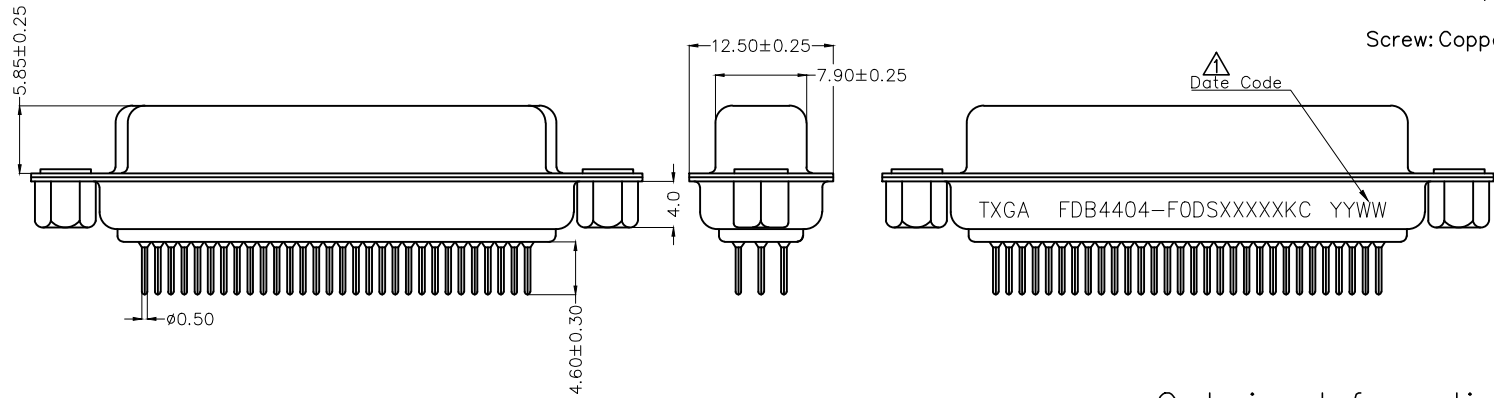
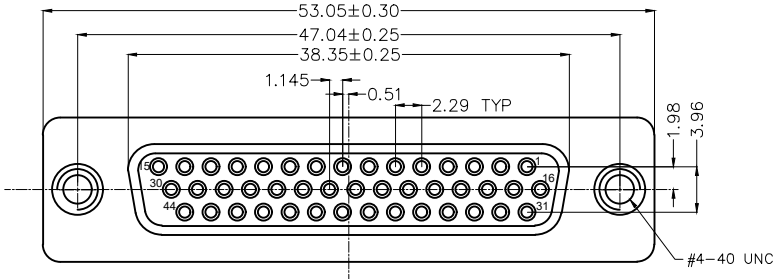
1 2 3 4 5 6 7 8

REV	LOCATIONS	DESCRIPTION	DATE	REVISOR	APPD
1	△	Add spray code	13/Jan/25	NICK	LEO

SPECIFICATIONS

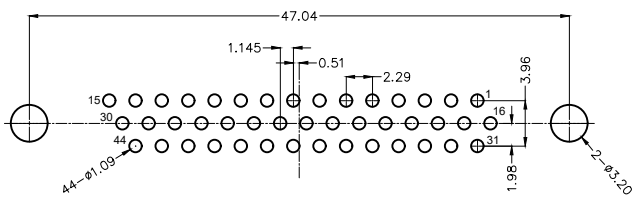
Electrical
 Current Rating: 3A AC(rms)/DC
 Voltage Rating: 250V AC(rms)/DC
 Contact Resistance: 25 mΩ Max
 Insulation Resistance: 1000 MΩ Min
 Withstanding Voltage: 500V AC r.m.s
 Temperature Range-Operating: -55°C~+105°C

Material and plating
 Housing: PBT UL 94V-0
 Contact: Copper Alloy/ Gold plating or Selective gold in contact area, tin on tail
 Shell: SPCC/ Nickel plating on the front shell and tin plating on the back shell
 Screw: Copper Alloy/ Nickel Plated



Ordering Information

FDB 44 04 - F0 D S X XX XX K C
 1 2 3 4 5 6 7 8 9 10 11



Recommended P.C.Board Layout

1 Category FDB- D-SUB Connector	2 Circuits 44-44 Circuits	3 Distinction No. 04	4 Type F0-Female	5 Assembly Layout D-DIP	6 Entry Angle S-180° Vertical
7 Plating 1-Gold plated 3-Selective gold in contact area,tin on tail	8 Thickness of Plating 00-Gold Flash 03-3µ" Custom Plate Available	9 Color-Resin K6-Black U1-Blue	10 Packaging K-Tray	11 Distinction Type C-C Type	

<p>THIRD ANGLE PROJECTION</p>	GENERAL TOLERANCES (UNLESS SPECIFIED) X. ±0.30 X.' ±5' X.X ±0.20 X.X' ±2' X.XX ±0.15 X.XX' ±1' X.XXX ±0.10 X.XXX' ±0.5'		APPROVE BY LEO	DATE 19/NOV/24	PART NO. FDB4404-F0DSXXXXXKC	ITEM NO. FDB4404	<p>Building Technology Cornerstone</p>
	DESIGN UNITS Metric(mm)	SCALE 5:1	SIZE A4	CHECKED BY GISELLE	DATE 19/NOV/24	TITLE D-SUB connector 44 Circuits 180° Vertical Female(DIP)	
DRAWN BY MATT					DATE 19/NOV/24	THIS DRAWING CONTAINS INFORMATION THAT IS PROPRIETARY TO TXGA INDUSTRIAL ELECTRONICS(S.Z)CO.,LTD AND SHOULD NOT BE USED WITHOUT WRITTEN PERMISSION	

1 2 3 4 5 6 7 8

1 2 3 4 5 6 7 8

REV	LOCATIONS	DESCRIPTION	DATE	REVISOR	APPD
1	△	Add spray code	13/Jan/25	NICK	LEO

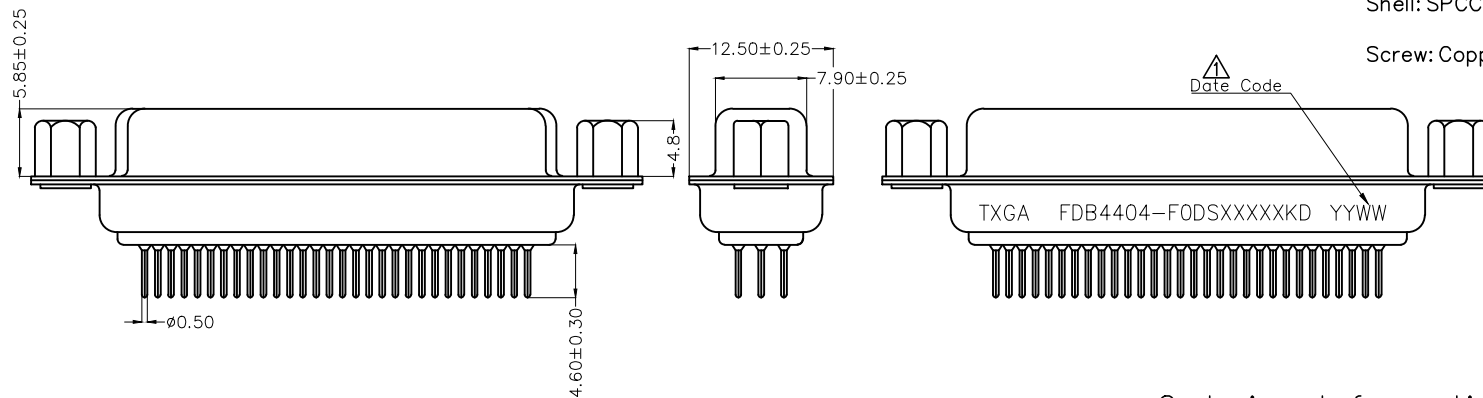
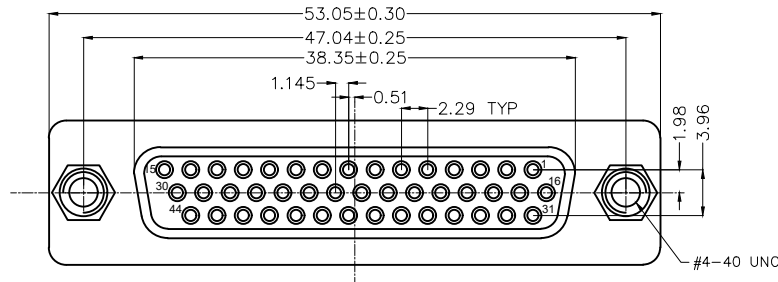
SPECIFICATIONS

Electrical

Current Rating: 3A AC(rms)/DC
 Voltage Rating: 250V AC(rms)/DC
 Contact Resistance: 25 mΩ Max
 Insulation Resistance: 1000 MΩ Min
 Withstanding Voltage: 500V AC r.m.s
 Temperature Range-Operating: -55°C~+105°C

Material and plating

Housing: PBT UL 94V-0
 Contact: Copper Alloy/ Gold plating or Selective gold in contact area, tin on tail
 Shell: SPCC/ Nickel plating on the front shell and tin plating on the back shell
 Screw: Copper Alloy/ Nickel Plated

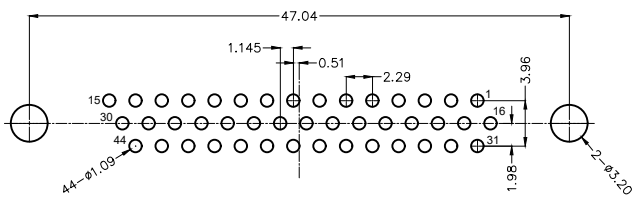


TXGA FDB4404-F0DSXXXXXKD YYWW

Ordering Information

FDB 44 04 - F0 D S X XX XX K D
 1 2 3 4 5 6 7 8 9 10 11

1 Category FDB- D-SUB Connector	2 Circuits 44-44 Circuits	3 Distinction No. 04	4 Type F0-Female	5 Assembly Layout D-DIP	6 Entry Angle S-180° Vertical
7 Plating 1-Gold plated 3-Selective gold in contact area, tin on tail	8 Thickness of Plating 00-Gold Flash 03-3µ" Custom Plate Available	9 Color-Resin K6-Black U1-Blue	10 Packaging K-Tray	11 Distinction Type D-D Type	



Recommended P.C.Board Layout

<p>THIRD ANGLE PROJECTION</p>	<p>GENERAL TOLERANCES (UNLESS SPECIFIED)</p>		<p>APPROVE BY LEO</p>	<p>DATE 19/NOV/24</p>	<p>PART NO. FDB4404-F0DSXXXXXKD</p>	<p>ITEM NO. FDB4404</p>	<p>Building Technology Cornerstone</p>
	X. ±0.30	X.' ±5'	CHECKED BY GISELLE	DATE 19/NOV/24	<p>TITLE D-SUB connector 44 Circuits 180° Vertical Female(DIP)</p>		
<p>DESIGN UNITS Metric(mm)</p>	X.X ±0.20	X.X' ±2'	DRAWN BY MATT	DATE 19/NOV/24	<p>THIS DRAWING CONTAINS INFORMATION THAT IS PROPRIETARY TO TXGA INDUSTRIAL ELECTRONICS(S.Z)CO.,LTD AND SHOULD NOT BE USED WITHOUT WRITTEN PERMISSION</p>		
<p>SCALE 5:1</p>	<p>SIZE A4</p>	X.XXX ±0.10	X.XXX' ±0.5'				

1 2 3 4 5 6 7 8

1 2 3 4 5 6 7 8

REV	LOCATIONS	DESCRIPTION	DATE	REVISOR	APPD
1	△	Add spray code	13/Jan/25	NICK	LEO

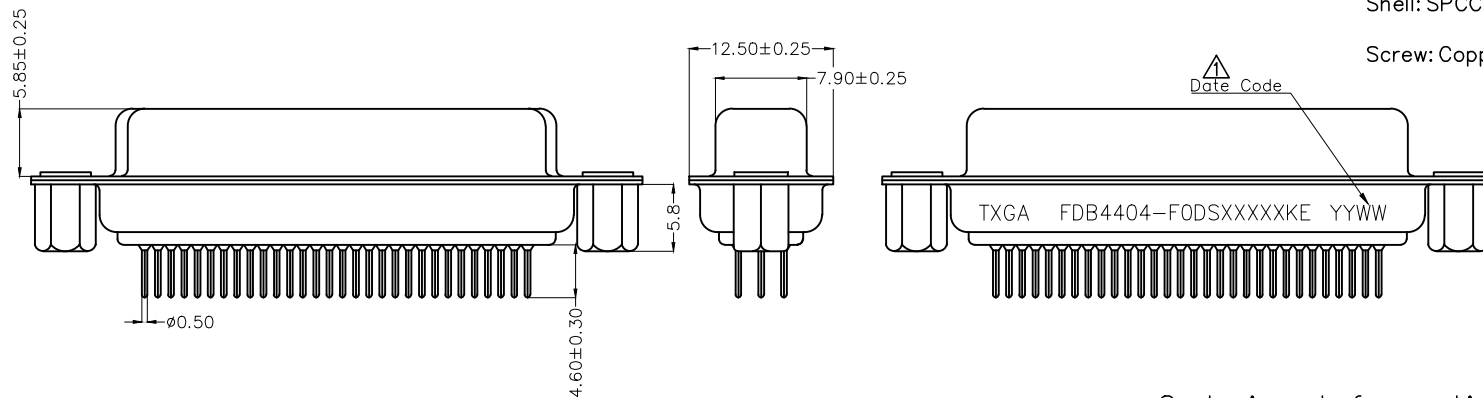
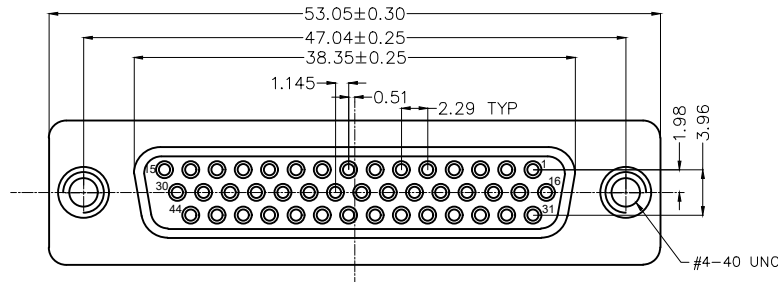
SPECIFICATIONS

Electrical

Current Rating: 3A AC(rms)/DC
 Voltage Rating: 250V AC(rms)/DC
 Contact Resistance: 25 mΩ Max
 Insulation Resistance: 1000 MΩ Min
 Withstanding Voltage: 500V AC r.m.s
 Temperature Range-Operating: -55°C~+105°C

Material and plating

Housing: PBT UL 94V-0
 Contact: Copper Alloy/ Gold plating or Selective gold in contact area, tin on tail
 Shell: SPCC/ Nickel plating on the front shell and tin plating on the back shell
 Screw: Copper Alloy/ Nickel Plated

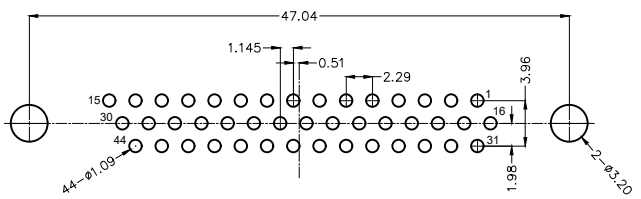


TXGA FDB4404-F0DSXXXXXKE YYWW

Ordering Information

FDB 44 04 - F0 D S X XX XX K E
 1 2 3 4 5 6 7 8 9 10 11

1 Category FDB- D-SUB Connector	2 Circuits 44-44 Circuits	3 Distinction No. 04	4 Type F0-Female	5 Assembly Layout D-DIP	6 Entry Angle S-180° Vertical
7 Plating 1-Gold plated 3-Selective gold in contact area, tin on tail	8 Thickness of Plating 00-Gold Flash 03-3μ" Custom Plate Available	9 Color-Resin K6-Black U1-Blue	10 Packaging K-Tray	11 Distinction Type E-E Type	



Recommended P.C.Board Layout

<p>THIRD ANGLE PROJECTION</p>	GENERAL TOLERANCES (UNLESS SPECIFIED)		APPROVE BY LEO	DATE 19/NOV/24	PART NO. FDB4404-F0DSXXXXXKE	ITEM NO. FDB4404	<p>Building Technology Cornerstone</p>
	X. ±0.30	X.' ±5'	CHECKED BY GISELLE	DATE 19/NOV/24	TITLE D-SUB connector 44 Circuits 180° Vertical Female(DIP)		
DESIGN UNITS Metric(mm)	X.X ±0.20	X.X' ±2'	DRAWN BY MATT	DATE 19/NOV/24	THIS DRAWING CONTAINS INFORMATION THAT IS PROPRIETARY TO TXGA INDUSTRIAL ELECTRONICS(S.Z)CO.,LTD AND SHOULD NOT BE USED WITHOUT WRITTEN PERMISSION		
SCALE 5:1	SIZE A4	X.XX ±0.15	X.XX' ±1'				
		X.XXX ±0.10	X.XXX' ±0.5'				

1 2 3 4 5 6 7 8

1 2 3 4 5 6 7 8

REV	LOCATIONS	DESCRIPTION	DATE	REVISOR	APPD
1	△	Add spray code	13/Jan/25	NICK	LEO

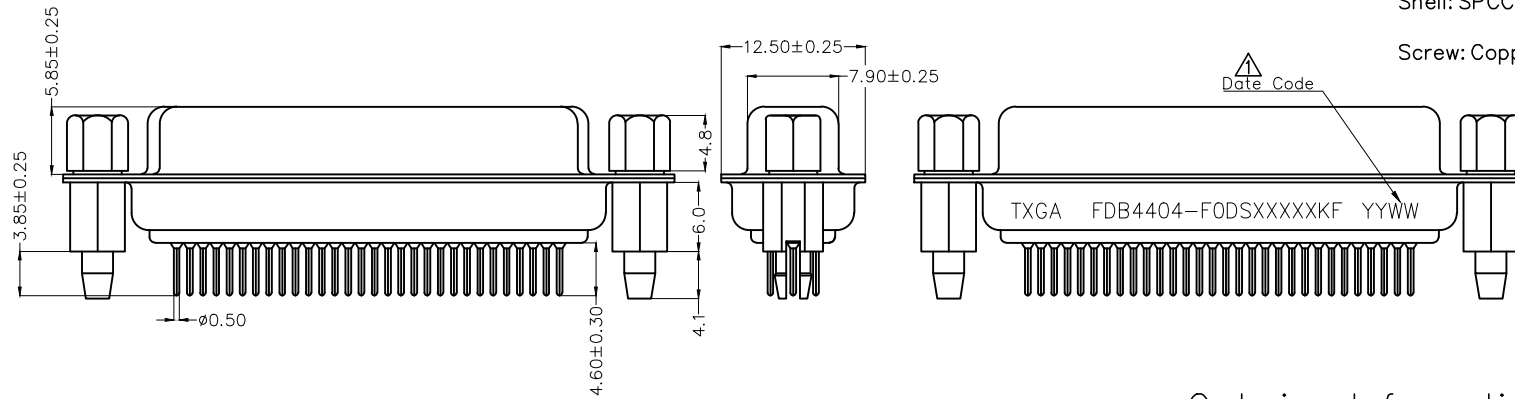
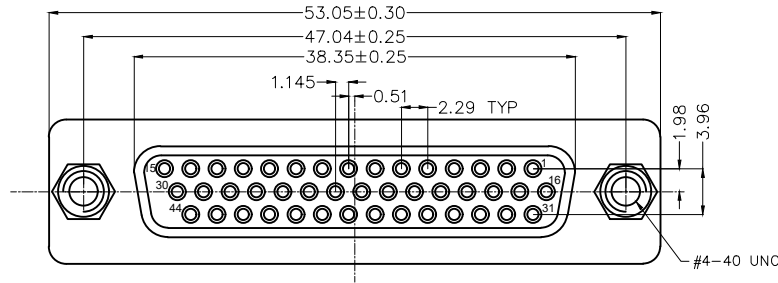
SPECIFICATIONS

Electrical

Current Rating: 3A AC(rms)/DC
 Voltage Rating: 250V AC(rms)/DC
 Contact Resistance: 25 mΩ Max
 Insulation Resistance: 1000 MΩ Min
 Withstanding Voltage: 500V AC r.m.s
 Temperature Range-Operating: -55°C~+105°C

Material and plating

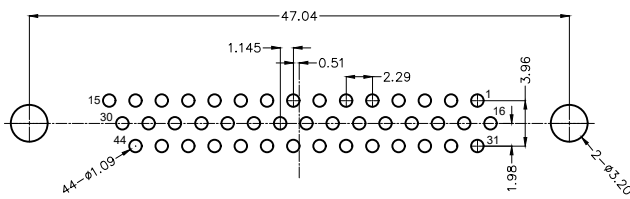
Housing: PBT UL 94V-0
 Contact: Copper Alloy/ Gold plating or Selective gold in contact area, tin on tail
 Shell: SPCC/ Nickel plating on the front shell and tin plating on the back shell
 Screw: Copper Alloy/ Nickel Plated



Ordering Information

FDB 44 04 - F0 D S X XX XX K F
 1 2 3 4 5 6 7 8 9 10 11

1 Category FDB- D-SUB Connector	2 Circuits 44-44 Circuits	3 Distinction No. 04	4 Type F0-Female	5 Assembly Layout D-DIP	6 Entry Angle S-180° Vertical
7 Plating 1-Gold plated 3-Selective gold in contact area, tin on tail	8 Thickness of Plating 00-Gold Flash 03-3μ" Custom Plate Available	9 Color-Resin K6-Black U1-Blue	10 Packaging K-Tray	11 Distinction Type F-F Type	



Recommended P.C.Board Layout

<p>THIRD ANGLE PROJECTION</p>	GENERAL TOLERANCES (UNLESS SPECIFIED) X. ±0.30 X.' ±5' X.X ±0.20 X.X' ±2' X.XX ±0.15 X.XX' ±1' X.XXX ±0.10 X.XXX' ±0.5'		APPROVE BY LEO	DATE 19/NOV/24	PART NO. FDB4404-F0DSXXXXXKF	ITEM NO. FDB4404	<p>Building Technology Cornerstone</p>
	DESIGN UNITS Metric(mm)	SCALE 5:1	SIZE A4	CHECKED BY GISELLE	DATE 19/NOV/24	TITLE D-SUB connector 44 Circuits 180° Vertical Female(DIP)	
THIS DRAWING CONTAINS INFORMATION THAT IS PROPRIETARY TO TXGA INDUSTRIAL ELECTRONICS(S.Z)CO.,LTD AND SHOULD NOT BE USED WITHOUT WRITTEN PERMISSION							

1 2 3 4 5 6 7 8