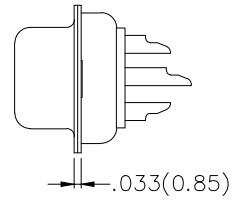
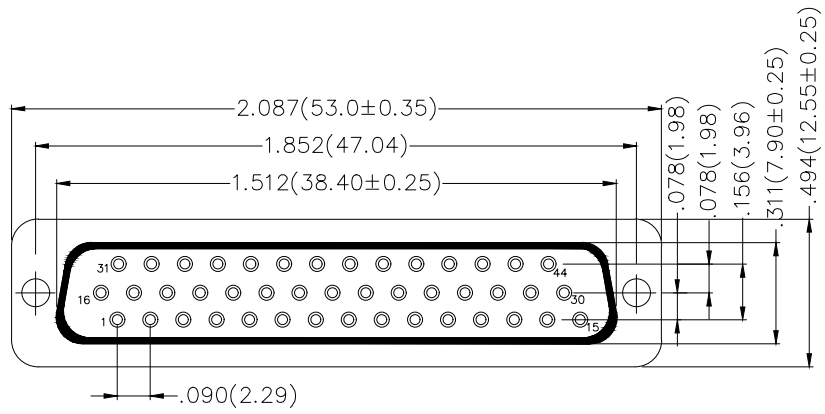


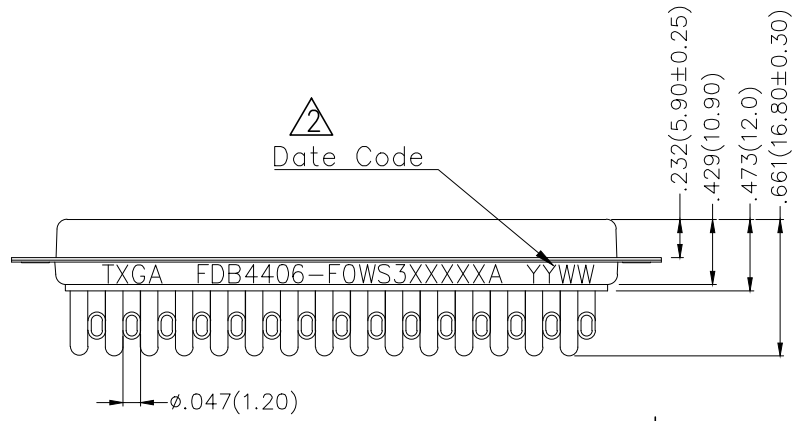
REV	LOCATIONS	DESCRIPTION	DATE	REVISER	APPD
1	△	Tolerance changes	12/AUG/22	MATT	CHERRY
2	△	Add marking code	13/Jan/25	NICK	LEO



SPECIFICATIONS

Electrical
 Current Rating: 3A AC(rms)/DC
 Voltage Rating: 250V AC(rms)/DC
 Contact Resistance: 25 mΩ Max
 Insulation Resistance: 1000 MΩ Min
 Withstanding Voltage: 500V AC r.m.s
 Temperature Range-Operating: -55°C~+105°C

Material and plating
 Housing: PBT UL 94V-0
 Contact: Copper Alloy/
 Selective gold in contact area, tin on tail
 Shell: SPCC/ Nickel Plated



Ordering Information

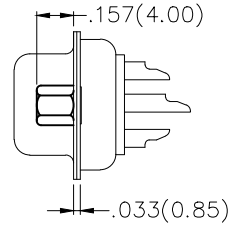
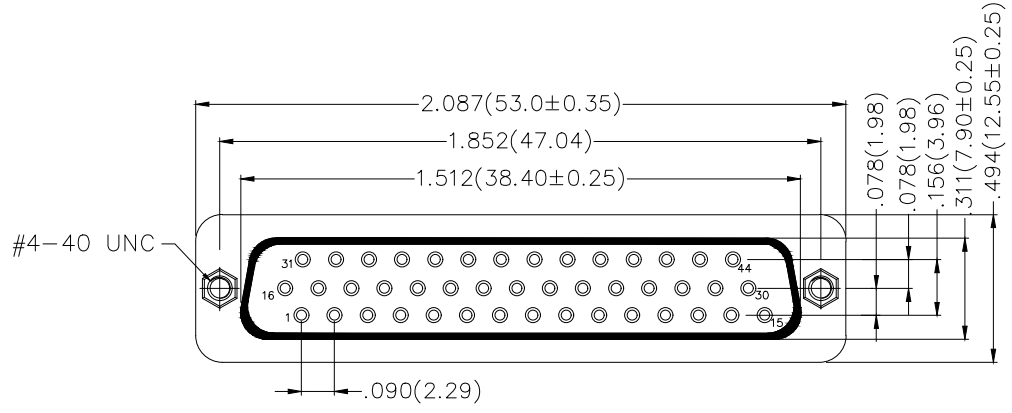
FDB 44 06 - F0 W S 3 XX XX X A
 1 2 3 4 5 6 7 8 9 10 11

1 Category FDB- D-SUB Connector	2 Circuits 44-44 Circuits	3 Distinction No. 06	4 Type F0-Female	5 Assembly Layout W-Welding Type	6 Entry Angle S-180° Vertical
7 Plating 3-Selective gold in contact area, tin on tail	8 Thickness of Plating 00-Gold Flash 03-3μ" Custom Plate Available	9 Color-Resin K6-Black U1-Blue	10 Packaging K-Tray L-Tube	11 Distinction Type A-A Type	

THIRD ANGLE PROJECTION	GENERAL TOLERANCES (UNLESS SPECIFIED)		APPROVE BY FRANK	DATE 28/JUN/13	PART NO. FDB4406-FOWS3XXXXXA	ITEM NO. FDB4406	 Leader Of Industry
	DESIGN UNITS Inch (metric)	X.±.012(0.30) X.X±.008(0.20) X.XX±.006(0.15) X.XXX±.004(0.10)	X.±5" .X±2" .XX±1" .XXX±0.5"	CHECKED BY JACOB	DATE 28/JUN/13	TITLE D-SUB connector 44 Circuits 180° Vertical Female	
SCALE 5:1	SIZE A4		DRAWN BY CHERRY	DATE 28/JUN/13	THIS DRAWING CONTAINS INFORMATION THAT IS PROPRIETARY TO TXGA INDUSTRIAL ELECTRONICS(S.Z)CO.,LTD AND SHOULD NOT BE USED WITHOUT WRITTEN PERMISSION		

REV 2 SHEET NO. 1/1

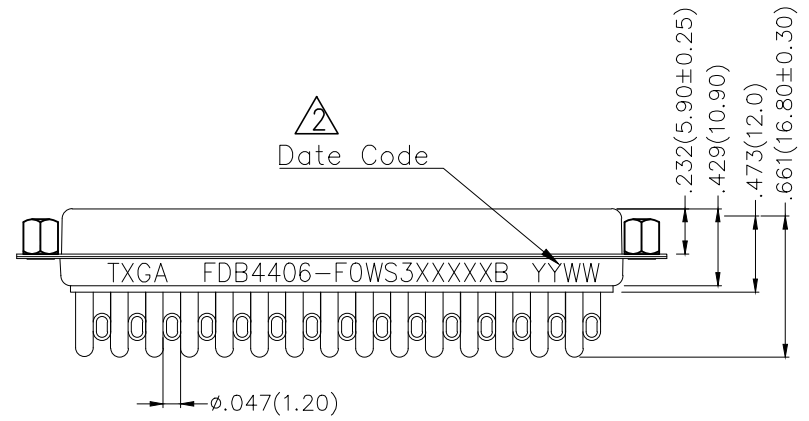
REV	LOCATIONS	DESCRIPTION	DATE	REVISER	APPD
1	△	Tolerance changes	12/AUG/22	MATT	CHERRY
2	△	Add marking code	13/Jan/25	NICK	LEO



SPECIFICATIONS

Electrical
 Current Rating: 3A AC(rms)/DC
 Voltage Rating: 250V AC(rms)/DC
 Contact Resistance: 25 mΩ Max
 Insulation Resistance: 1000 MΩ Min
 Withstanding Voltage: 500V AC r.m.s
 Temperature Range-Operating: -55°C~+105°C


Material and plating
 Housing: PBT UL 94V-0
 Contact: Copper Alloy/
 Selective gold in contact area, tin on tail
 Shell: SPCC/ Nickel Plated
 Screws: Copper Alloy/ Nickel Plated



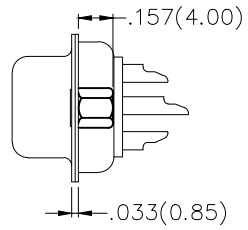
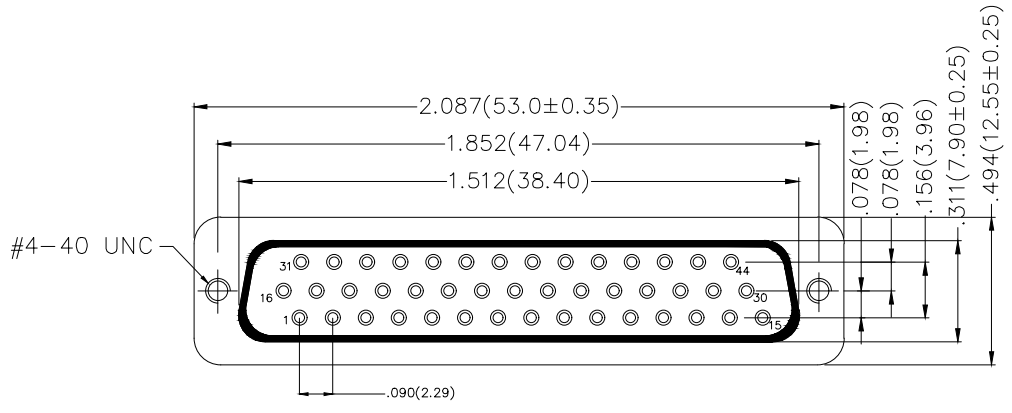
Ordering Information

FDB	44	06	-	F0	W	S	3	XX	XX	X	B
1	2	3	4	5	6	7	8	9	10	11	

1 Category FDB- D-SUB Connector	2 Circuits 44-44 Circuits	3 Distinction No. 06	4 Type F0-Female	5 Assembly Layout W-Welding Type	6 Entry Angle S-180° Vertical
7 Plating 3-Selective gold in contact area, tin on tail	8 Thickness of Plating 00-Gold Flash 03-3μ" Custom Plate Available	9 Color-Resin K6-Black U1-Blue	10 Packaging K-Tray L-Tube	11 Distinction Type B-B Type	

THIRD ANGLE PROJECTION	GENERAL TOLERANCES (UNLESS SPECIFIED)		APPROVE BY FRANK	DATE 28/JUN/13	PART NO. FDB4406-FOWS3XXXXXB	ITEM NO. FDB4406	 Leader Of Industry
	DESIGN UNITS Inch (metric)	X.±.012(0.30) X.X±.008(0.20) X.XX±.006(0.15) X.XXX±.004(0.10)	X.±5" .X±2" .XX±1" .XXX±0.5"	CHECKED BY JACOB	DATE 28/JUN/13	TITLE D-SUB connector 44 Circuits 180° Vertical Female	
SCALE 5:1	SIZE A4		DRAWN BY CHERRY	DATE 28/JUN/13	THIS DRAWING CONTAINS INFORMATION THAT IS PROPRIETARY TO TXGA INDUSTRIAL ELECTRONICS(S.2)CO.,LTD AND SHOULD NOT BE USED WITHOUT WRITTEN PERMISSION		

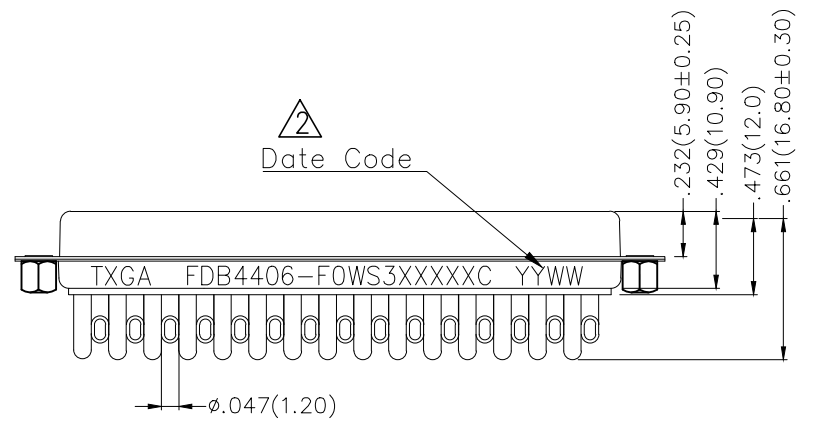
REV	LOCATIONS	DESCRIPTION	DATE	REVISER	APPD
1	△	Tolerance changes	12/AUG/22	MATT	CHERRY
2	△	Add marking code	13/Jan/25	NICK	LEO



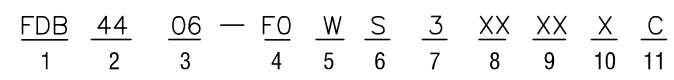
SPECIFICATIONS

Electrical
 Current Rating: 3A AC(rms)/DC
 Voltage Rating: 250V AC(rms)/DC
 Contact Resistance: 25 mΩ Max
 Insulation Resistance: 1000 MΩ Min
 Withstanding Voltage: 500V AC r.m.s
 Temperature Range-Operating: -55°C~+105°C

Material and plating
 Housing: PBT UL 94V-0
 Contact: Copper Alloy/
 Selective gold in contact area, tin on tail
 Shell: SPCC/ Nickel Plated
 Screws: Copper Alloy/ Nickel Plated



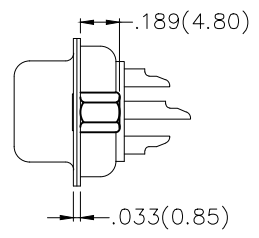
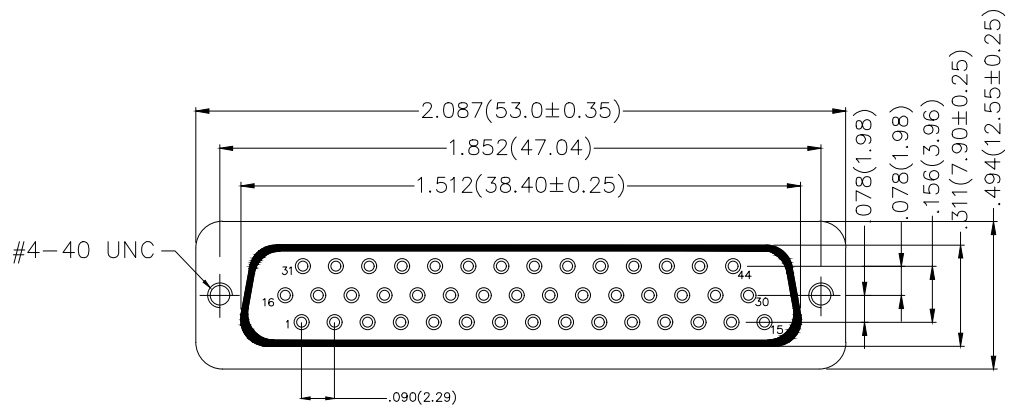
Ordering Information



1	Category FDB- D-SUB Connector	2	Circuits 44-44 Circuits	3	Distinction No. 06	4	Type F0-Female	5	Assembly Layout W-Welding Type	6	Entry Angle S-180° Vertical
7	Plating 3-Selective gold in contact area, tin on tail	8	Thickness of Plating 00-Gold Flash 03-3µ" Custom Plate Available	9	Color-Resin K6-Black U1-Blue	10	Packaging K-Tray L-Tube	11	Distinction Type C-C Type		

 THIRD ANGLE PROJECTION	GENERAL TOLERANCES (UNLESS SPECIFIED)		APPROVE BY FRANK	DATE 28/JUN/13	PART NO. FDB4406-FOWS3XXXXXC	ITEM NO. FDB4406	 Leader Of Industry	
	X.±.012(0.30)	X.±5'	CHECKED BY JACOB	DATE 28/JUN/13	TITLE D-SUB connector 44 Circuits 180° Vertical Female			REV 2
	DESIGN UNITS Inch (metric)	X.X±.008(0.20)	.X'±2'	DRAWN BY CHERRY	DATE 28/JUN/13	THIS DRAWING CONTAINS INFORMATION THAT IS PROPRIETARY TO TXGA INDUSTRIAL ELECTRONICS(S.Z)CO.,LTD AND SHOULD NOT BE USED WITHOUT WRITTEN PERMISSION		

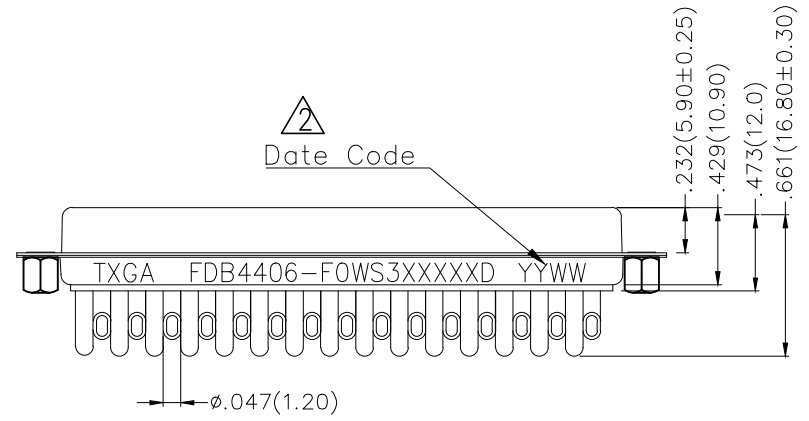
REV	LOCATIONS	DESCRIPTION	DATE	REVISER	APPD
1	△	Tolerance changes	12/AUG/22	MATT	CHERRY
2	△	Add marking code	13/Jan/25	NICK	LEO



SPECIFICATIONS

Electrical
 Current Rating: 3A AC(rms)/DC
 Voltage Rating: 250V AC(rms)/DC
 Contact Resistance: 25 mΩ Max
 Insulation Resistance: 1000 MΩ Min
 Withstanding Voltage: 500V AC r.m.s
 Temperature Range-Operating: -55°C~+105°C


Material and plating
 Housing: PBT UL 94V-0
 Contact: Copper Alloy/
 Selective gold in contact area, tin on tail
 Shell: SPCC/ Nickel Plated
 Screws: Copper Alloy/ Nickel Plated



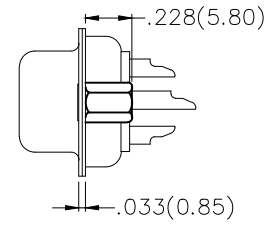
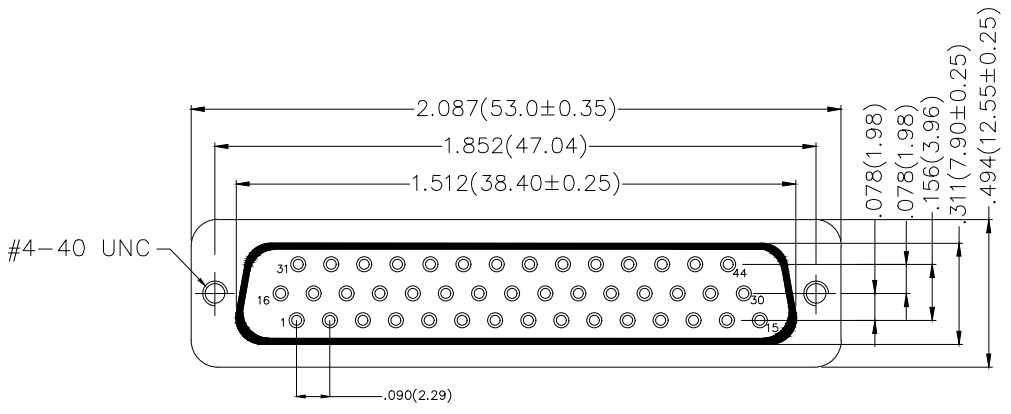
Ordering Information

FDB	44	06	-	F0	W	S	3	XX	XX	X	D
1	2	3	4	5	6	7	8	9	10	11	

1 Category FDB- D-SUB Connector	2 Circuits 44-44 Circuits	3 Distinction No. 06	4 Type F0-Female	5 Assembly Layout W-Welding Type	6 Entry Angle S-180° Vertical
7 Plating 3-Selective gold in contact area, tin on tail	8 Thickness of Plating 00-Gold Flash 03-3μ" Custom Plate Available	9 Color-Resin K6-Black U1-Blue	10 Packaging K-Tray L-Tube	11 Distinction Type D-D Type	

THIRD ANGLE PROJECTION	GENERAL TOLERANCES (UNLESS SPECIFIED)		APPROVE BY FRANK	DATE 28/JUN/13	PART NO. FDB4406-FOWS3XXXXXD	ITEM NO. FDB4406	 Leader Of Industry
	DESIGN UNITS Inch (metric)	X.±.012(0.30) X.X±.008(0.20) X.XX±.006(0.15) X.XXX±.004(0.10)	X.±5" .X±2" .XX±1" .XXX±0.5"	CHECKED BY JACOB	DATE 28/JUN/13	TITLE D-SUB connector 44 Circuits 180° Vertical Female	
SCALE 5:1	SIZE A4		DRAWN BY CHERRY	DATE 28/JUN/13	THIS DRAWING CONTAINS INFORMATION THAT IS PROPRIETARY TO TXGA INDUSTRIAL ELECTRONICS(S.2)CO.,LTD AND SHOULD NOT BE USED WITHOUT WRITTEN PERMISSION		

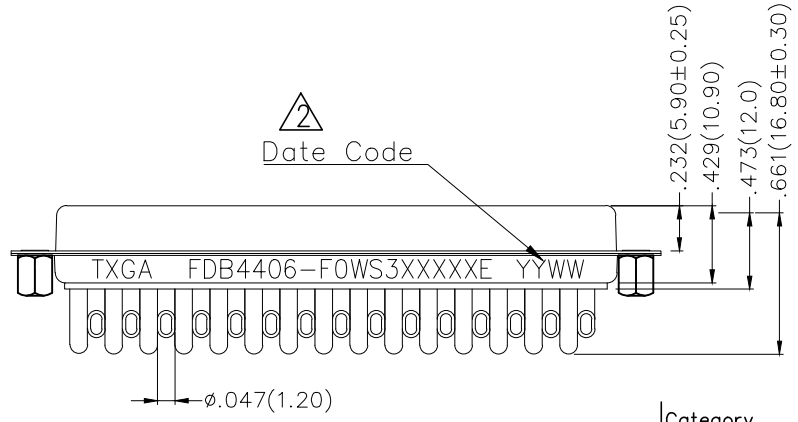
REV	LOCATIONS	DESCRIPTION	DATE	REVISER	APPD
1		Tolerance changes	12/AUG/22	MATT	CHERRY
2		Add marking code	13/Jan/25	NICK	LEO



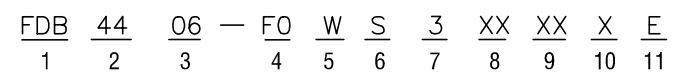
SPECIFICATIONS

Electrical
 Current Rating: 3A AC(rms)/DC
 Voltage Rating: 250V AC(rms)/DC
 Contact Resistance: 25 mΩ Max
 Insulation Resistance: 1000 MΩ Min
 Withstanding Voltage: 500V AC r.m.s
 Temperature Range-Operating: -55°C~+105°C

Material and plating
 Housing: PBT UL 94V-0
 Contact: Copper Alloy/
 Selective gold in contact area, tin on tail
 Shell: SPCC/ Nickel Plated
 Screws: Copper Alloy/ Nickel Plated



Ordering Information



1 Category FDB- D-SUB Connector	2 Circuits 44-44 Circuits	3 Distinction No. 06	4 Type FO-Female	5 Assembly Layout W-Welding Type	6 Entry Angle S-180° Vertical
7 Plating 3-Selective gold in contact area, tin on tail	8 Thickness of Plating 00-Gold Flash 03-3μ" Custom Plate Available	9 Color-Resin K6-Black U1-Blue	10 Packaging K-Tray L-Tube	11 Distinction Type E-E Type	

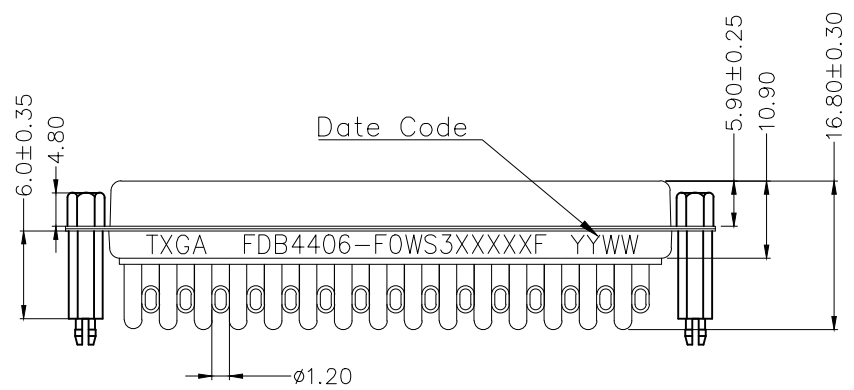
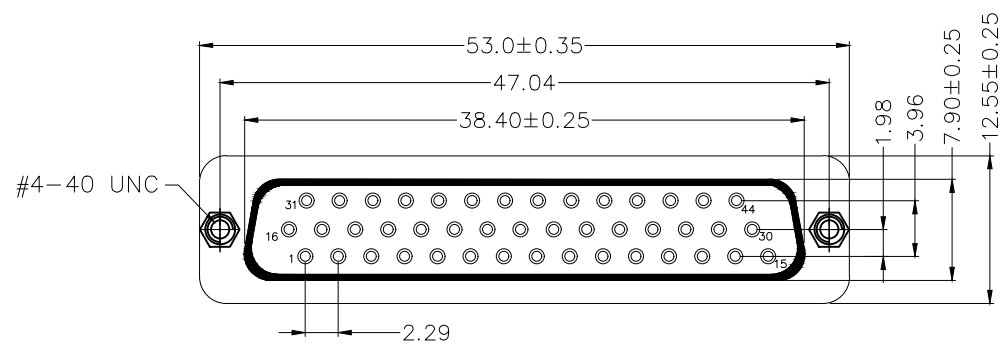
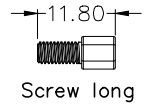
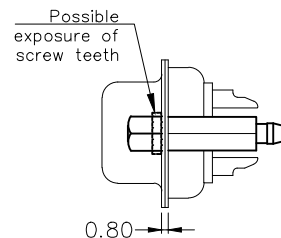
THIRD ANGLE PROJECTION	GENERAL TOLERANCES (UNLESS SPECIFIED)		APPROVE BY FRANK	DATE 28/JUN/13	PART NO. FDB4406-FOWS3XXXXXE	ITEM NO. FDB4406	 Leader Of Industry
	DESIGN UNITS Inch (metric)	X.±.012(0.30) X.X±.008(0.20)	X'.±5' .X'±2'	CHECKED BY JACOB	DATE 28/JUN/13	TITLE D-SUB connector 44 Circuits 180° Vertical Female	
SCALE 5:1	SIZE A4	X.XX±.006(0.15) X.XXX±.004(0.10)	.XX±1' .XXX±0.5'	DRAWN BY CHERRY	DATE 28/JUN/13	THIS DRAWING CONTAINS INFORMATION THAT IS PROPRIETARY TO TXGA INDUSTRIAL ELECTRONICS(S.2)CO.,LTD AND SHOULD NOT BE USED WITHOUT WRITTEN PERMISSION	

REV 2 SHEET NO. 1/1

REV	LOCATIONS	DESCRIPTION	DATE	REVISER	APPD

SPECIFICATIONS

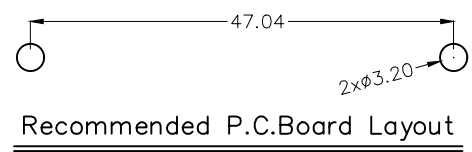
Electrical
 Current Rating: 3A AC(rms)/DC
 Voltage Rating: 250V AC(rms)/DC
 Contact Resistance: 25 mΩ Max
 Insulation Resistance: 1000 MΩ Min
 Withstanding Voltage: 500V AC r.m.s
 Temperature Range—Operating: -55°C~+105°C
 MaHousing: PBT UL 94V-0
 Contact: Copper Alloy/
 Selective gold in contact area, tin on tail
 Shell: SPCC/ Nickel Plated
 Board Lock: Copper Alloy/ Tin Plated
 Screws: Steel/ Nickel Plated
 Salt spray :24H Min.



Ordering Information

FDB 44 06 — FO W S 3 XX XX X F
 1 2 3 4 5 6 7 8 9 10 11

1 Category FDB- D-SUB Connector	2 Circuits 44-44 Circuits	3 Distinction No. 06	4 Type FO-Female	5 Assembly Layout W-Welding Type	6 Entry Angle S-180° Vertical
7 Plating 3-Selective gold in contact area, tin on tail	8 Thickness of Plating 00-Gold Flash 03-3μ" Custom Plate Available	9 Color-Resin K6-Black U1-Blue	10 Packaging K-Tray	11 Distinction Type F-F Type	



 THIRD ANGLE PROJECTION	GENERAL TOLERANCES (UNLESS SPECIFIED)		APPROVE BY LEO	DATE 25/JAN/25	PART NO. FDB4406-FOWS3XXXXXF	ITEM NO. FDB4406	 Building Technology Cornerstone
	X. ±0.30	X.* ±5°	CHECKED BY GISELLE	DATE 25/JAN/25	TITLE D-SUB connector 44 Circuits 180° Vertical Female		
DESIGN UNITS METRIC	X.X ±0.20	X.X* ±2°	DRAWN BY NICK	DATE 25/JAN/25	THIS DRAWING CONTAINS INFORMATION THAT IS PROPRIETARY TO TXGA INDUSTRIAL ELECTRONICS(S.Z)CO.,LTD AND SHOULD NOT BE USED WITHOUT WRITTEN PERMISSION		
SCALE 5:1	SIZE A4	X.XX ±0.15	X.XX* ±1°				
		X.XXX ±0.10	X.XXX* ±0.5°				