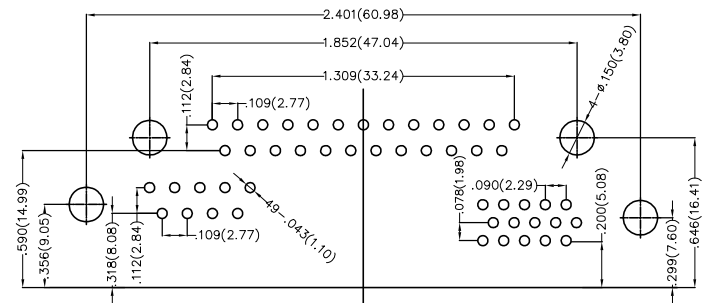
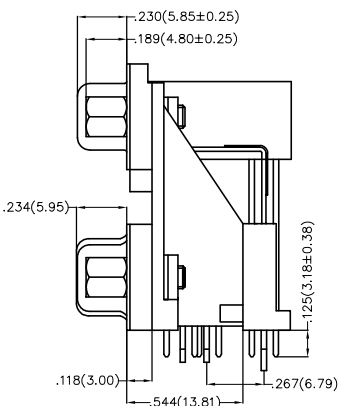
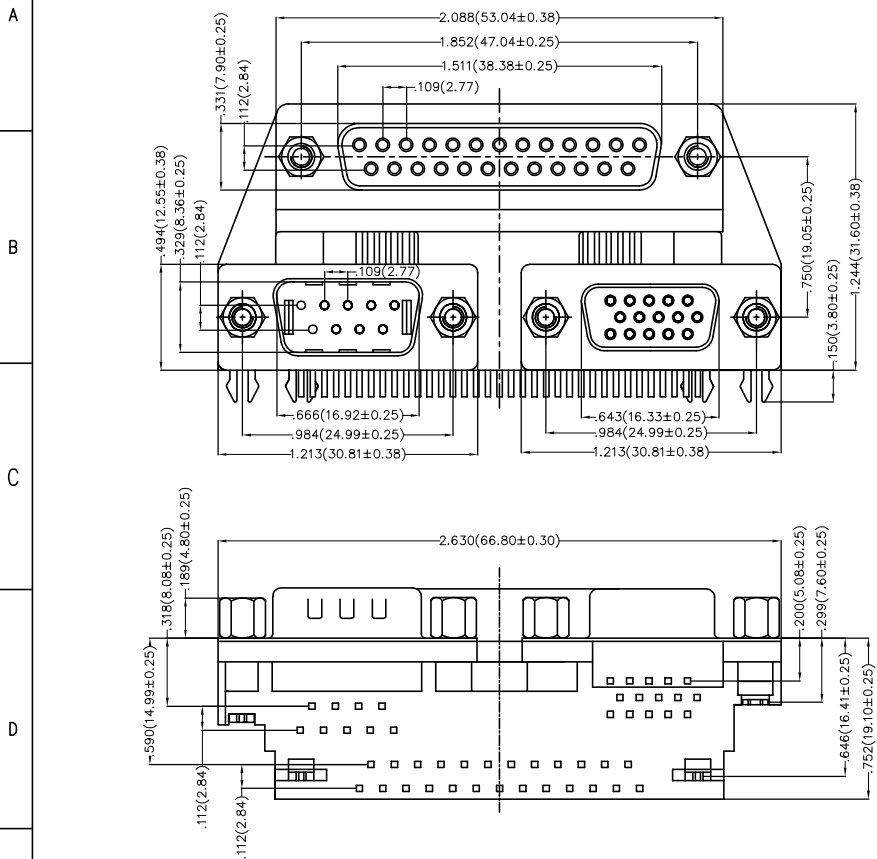


| REV | LOCATIONS | DESCRIPTION | DATE | REVISER | APPD |
|-----|-----------|-------------|------|---------|------|
| | | | | | |



Recommended P.C. Board Layout

Ordering Information

FDB 49 01 — FMF D B 3 XX RGB K
 1 2 3 4 5 6 7 8 9 10

| | | | | | | | | | |
|---|---------------------------------|---|----------------------------|---|---|---|--------------------------------------|----|--------------------------|
| 1 | Series Name FDB- D-SUB | 2 | Circuits 49 | 3 | Distinction No. 01 | 4 | Type FMF-Female+Male+Female | 5 | Assembly Layout D-DIP |
| 6 | Entry Type B-Side entry type | 7 | Plating 3-Half Gold/Tin | 8 | Thickness of Plating 00-Gold Flash 03-3u" Custom Plate Available | 9 | Plastic Colour RGB-Red+Green+Blue | 10 | Packaging K-PE Tray |

SPECIFICATIONS

Electrical

- 1.Current Rating:1A AC(rms)/DC
- 2.Voltage Rating:300V AC(rms)/DC
- 3.Contact Resistance:20 mΩ Max
- 4.Insulation Resistance:1000 MΩ MIN
- 5.Withstanding Voltage:500V AC r.m.s
- 6.Temperature Range-Operating:-55°C~+105°C

Material and Finish

- 1.Housing: PBT±30% GF UL 94V-0
- 2.Contact: Brass/Gold Flash Plated
Plated On Soldertails, Nickel Under Plated Over All/Gold Plated Options
- 3.Shell: Spcc/Nickel Plated Over All
- 4.Screws: Copper Alloy/Nickel Plated Over All

| | | | | | | | | |
|---|---------------------------------------|------------|---------------------|-------------------|--|---------------------|------------------------|-------|
| THIRD ANGLE PROJECTION DESIGN UNITS Inch (metric) SCALE 5:1 SIZE A4 | GENERAL TOLERANCES (UNLESS SPECIFIED) | | APPROVE BY FRANK | DATE 28/JUN/13 | PART NO. FDB4901-FMFDB3XXRGBK | ITEM NO. FDB4901 | Leader Of Industry | |
| | X.±.012(0.30) | X.±5° | CHECKED BY JACOB | DATE 28/JUN/13 | TITLE D-SUB 49 PIN FEMALE 25PIN+ MALE 9PIN+FEMALE 15PIN CONN | | | REV 0 |
| | X.XX±.008(0.20) | .X'±2' | DRAWN BY CHERRY | DATE 28/JUN/13 | THIS DRAWING CONTAINS INFORMATION THAT IS PROPRIETARY TO TXGA INDUSTRIAL ELECTRONICS(S.Z)CO.,LTD AND SHOULD NOT BE USED WITHOUT WRITTEN PERMISSION | | | |
| | X.XX±.006(0.15) | .XX'±1' | | | | | | |
| | X.XXX±.004(0.10) | .XXX'±0.5° | | | | | | |