

REV	LOCATIONS	DESCRIPTION	DATE	REVISER	APPD
1	△	Add marking code Update version	13/Jan/25	NICK	LEO

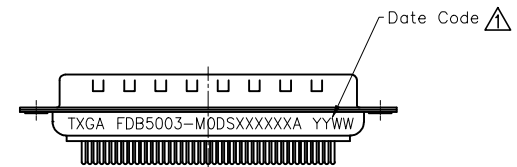
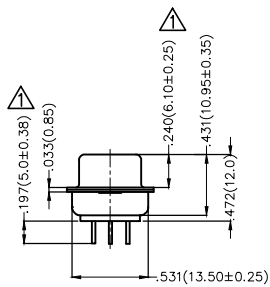
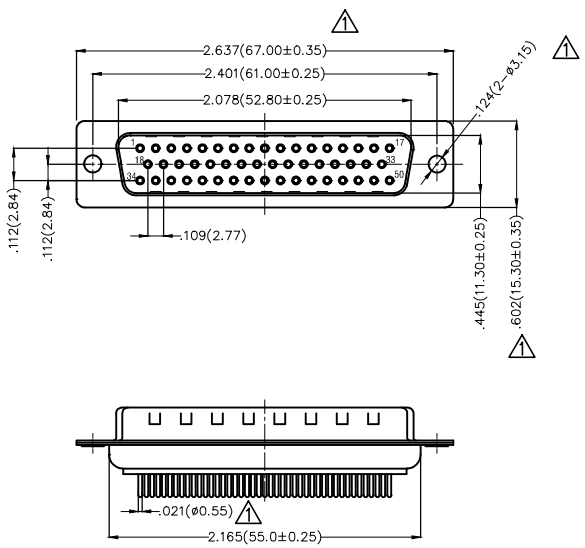
**SPECIFICATIONS**

**Electrical**

Current Rating: 3A AC(rms)/DC  
Voltage Rating: 250V AC(rms)/DC  
Contact Resistance: 25 mΩ Max  
Insulation Resistance: 1000 MΩ Min  
Withstanding Voltage: 500V AC r.m.s  
Temperature Range-Operating: -55°C~+105°C

**Material and plating**

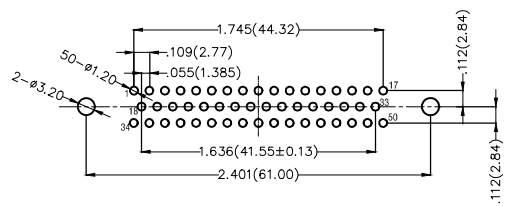
Housing: PBT UL 94V-0  
Contact: Copper Alloy/ Gold Plated/  
Selective gold in contact area, tin on tail  
Shell: SPCC/ Nickel Plated




**Ordering Information**

FDB 50 03 - M0 D S X XX XX X A  
1 2 3 4 5 6 7 8 9 10 11

1 Category FDB- D-SUB Connector	2 Circuits 50-50 Circuits	3 Distinction No. 03	4 Type M0-Male	5 Assembly Layout D-DIP	6 Entry Angle S-180° Vertical
7 Plating 1-Gold Plated 3-Selective gold in contact area, tin on tail	8 Thickness of Plating 00-Gold Flash 03-3μ" Custom Plate Available	9 Color-Resin K6-Black U1-Blue	10 Packaging K-Tray L-Tube	11 Distinction Type A-A Type	



Recommended P.C.Board Layout

THIRD ANGLE PROJECTION	GENERAL TOLERANCES (UNLESS SPECIFIED)		APPROVE BY FRANK	DATE 28/JUN/13	PART NO. FDB5003-M0DSXXXXXX	ITEM NO. FDB5003	 Leader Of Industry	
	DESIGN UNITS Inch (metric)	X.±.012(0.30) X.X±.008(0.20) X.XX±.006(0.15) X.XXX±.004(0.10)	X.±5" .X'±2" .XX'±1" .XXX'±0.5"	CHECKED BY JACOB	DATE 28/JUN/13	TITLE D-SUB connector 50 Circuits 180° Vertical Male		REV 1
SCALE 5:1	SIZE A4	DRAWN BY CHERRY		DATE 28/JUN/13	THIS DRAWING CONTAINS INFORMATION THAT IS PROPRIETARY TO TXGA INDUSTRIAL ELECTRONICS(S.Z)CO.,LTD AND SHOULD NOT BE USED WITHOUT WRITTEN PERMISSION			

REV	LOCATIONS	DESCRIPTION	DATE	REVISER	APPD
1	△	Add marking code	13/Jan/25	NICK	LEO

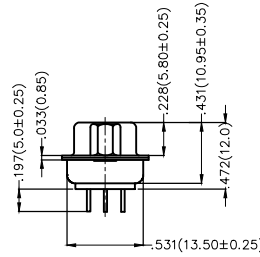
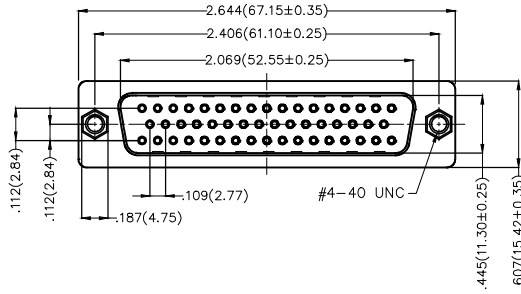
**SPECIFICATIONS**

**Electrical**

Current Rating: 3A AC(rms)/DC  
Voltage Rating: 250V AC(rms)/DC  
Contact Resistance: 25 mΩ Max  
Insulation Resistance: 1000 MΩ Min  
Withstanding Voltage: 500V AC r.m.s  
Temperature Range-Operating: -55°C~+105°C

**Material and plating**

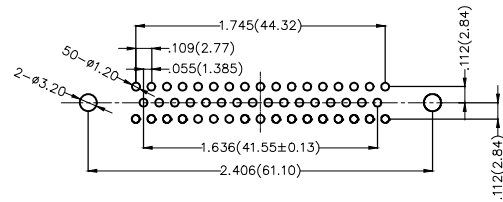
Housing: PBT UL 94V-0  
Contact: Copper Alloy/ Gold Plated/  
Selective gold in contact area, tin on tail  
Shell: SPCC/ Nickel Plated  
Screws: Copper Alloy/ Nickel Plated




**Ordering Information**

FDB 50 03 - M0 D S X XX XX X B  
1 2 3 4 5 6 7 8 9 10 11

1 Category FDB- D-SUB Connector	2 Circuits 50-50 Circuits	3 Distinction No. 03	4 Type M0-Male	5 Assembly Layout D-DIP	6 Entry Angle S-180° Vertical
7 Plating 1-Gold Plated 3-Selective gold in contact area, tin on tail	8 Thickness of Plating 00-Gold Flash 03-3μ" Custom Plate Available	9 Color-Resin K6-Black U1-Blue	10 Packaging K-Tray L-Tube	11 Distinction Type B-B Type	



Recommended P.C.Board Layout

THIRD ANGLE PROJECTION	GENERAL TOLERANCES (UNLESS SPECIFIED)		APPROVE BY FRANK	DATE 28/JUN/13	PART NO. FDB5003-M0DSXXXXXXB	ITEM NO. FDB5003	 Leader Of Industry	
	DESIGN UNITS Inch (metric)	X.±.012(0.30) X.X±.008(0.20) X.XX±.006(0.15) X.XXX±.004(0.10)	X.±5" .X±2" .XX±1" .XXX±0.5"	CHECKED BY JACOB	DATE 28/JUN/13	TITLE D-SUB connector 50 Circuits 180° Vertical Male		REV 1
SCALE 5:1	SIZE A4	DRAWN BY CHERRY		DATE 28/JUN/13	THIS DRAWING CONTAINS INFORMATION THAT IS PROPRIETARY TO TXGA INDUSTRIAL ELECTRONICS(S.Z)CO.,LTD AND SHOULD NOT BE USED WITHOUT WRITTEN PERMISSION			

REV	LOCATIONS	DESCRIPTION	DATE	REVISER	APPD
1	△	Add marking code	13/Jan/25	NICK	LEO

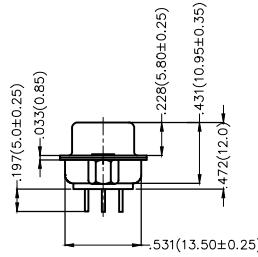
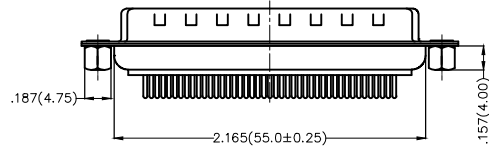
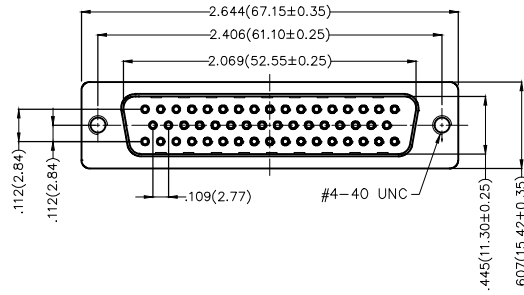
**SPECIFICATIONS**

**Electrical**

Current Rating: 3A AC(rms)/DC  
Voltage Rating: 250V AC(rms)/DC  
Contact Resistance: 25 mΩ Max  
Insulation Resistance: 1000 MΩ Min  
Withstanding Voltage: 500V AC r.m.s  
Temperature Range—Operating: -55°C~+105°C

**Material and plating**

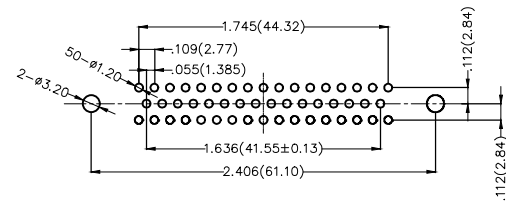
Housing: PBT UL 94V-0  
Contact: Copper Alloy/ Gold Plated/  
Selective gold in contact area, tin on tail  
Shell: SPCC/ Nickel Plated  
Screws: Copper Alloy/ Nickel Plated




**Ordering Information**

FDB 50 03 - M0 D S X XX XX X C  
1 2 3 4 5 6 7 8 9 10 11

1 Category FDB- D-SUB Connector	2 Circuits 50-50 Circuits	3 Distinction No. 03	4 Type M0-Male	5 Assembly Layout D-DIP	6 Entry Angle S-180° Vertical
7 Plating 1-Gold Plated 3-Selective gold in contact area, tin on tail	8 Thickness of Plating 00-Gold Flash 03-3μ" Custom Plate Available	9 Color-Resin K6-Black U1-Blue	10 Packaging K-Tray L-Tube	11 Distinction Type C-C Type	



Recommended P.C.Board Layout

THIRD ANGLE PROJECTION	GENERAL TOLERANCES (UNLESS SPECIFIED)		APPROVE BY FRANK	DATE 28/JUN/13	PART NO. FDB5003-M0DSXXXXXXC	ITEM NO. FDB5003	 Leader Of Industry	
	DESIGN UNITS Inch (metric)	X.±.012(0.30) X.X±.008(0.20) X.XX±.006(0.15) X.XXX±.004(0.10)	X.±5" .X±2" .XX±1" .XXX±0.5"	CHECKED BY JACOB	DATE 28/JUN/13	TITLE D-SUB connector 50 Circuits 180° Vertical Male		REV 1
SCALE 5:1	SIZE A4		DRAWN BY CHERRY	DATE 28/JUN/13	THIS DRAWING CONTAINS INFORMATION THAT IS PROPRIETARY TO TXGA INDUSTRIAL ELECTRONICS(S.2)CO.,LTD AND SHOULD NOT BE USED WITHOUT WRITTEN PERMISSION			

REV	LOCATIONS	DESCRIPTION	DATE	REVISED	APPD
1	△	Add marking code	13/Jan/25	NICK	LEO

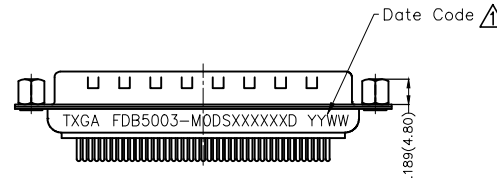
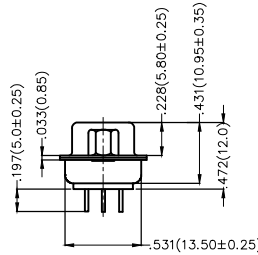
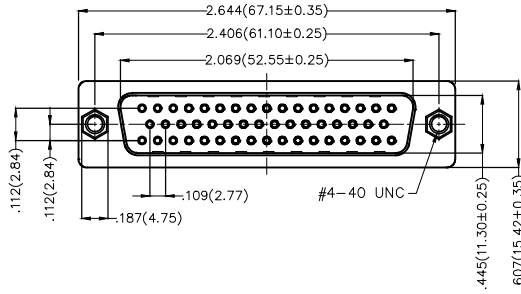
SPECIFICATIONS

Electrical

Current Rating: 3A AC(rms)/DC  
Voltage Rating: 250V AC(rms)/DC  
Contact Resistance: 25 mΩ Max  
Insulation Resistance: 1000 MΩ Min  
Withstanding Voltage: 500V AC r.m.s  
Temperature Range-Operating: -55°C~+105°C

Material and plating

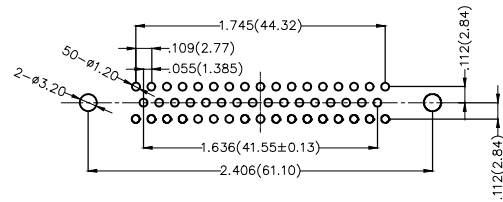
Housing: PBT UL 94V-0  
Contact: Copper Alloy/ Gold Plated/  
Selective gold in contact area, tin on tail  
Shell: SPCC/ Nickel Plated  
Screws: Copper Alloy/ Nickel Plated




Ordering Information

FDB 50 03 - M0 D S X XX XX X D  
1 2 3 4 5 6 7 8 9 10 11

1 Category FDB- D-SUB Connector	2 Circuits 50-50 Circuits	3 Distinction No. 03	4 Type M0-Male	5 Assembly Layout D-DIP	6 Entry Angle S-180° Vertical
7 Plating 1-Gold Plated 3-Selective gold in contact area, tin on tail	8 Thickness of Plating 00-Gold Flash 03-3μ" Custom Plate Available	9 Color-Resin K6-Black U1-Blue	10 Packaging K-Tray L-Tube	11 Distinction Type D-D Type	



Recommended P.C.Board Layout

THIRD ANGLE PROJECTION	GENERAL TOLERANCES (UNLESS SPECIFIED)		APPROVE BY FRANK	DATE 28/JUN/13	PART NO. FDB5003-M0DSXXXXXXD	ITEM NO. FDB5003	 Leader Of Industry	
	DESIGN UNITS Inch (metric)	X.±.012(0.30) X.X±.008(0.20) X.XX±.006(0.15) X.XXX±.004(0.10)	X'.±5" .X'±2" .XX'±1" .XXX'±0.5"	CHECKED BY JACOB	DATE 28/JUN/13	TITLE D-SUB connector 50 Circuits 180° Vertical Male		REV 1
SCALE 5:1	SIZE A4		DRAWN BY CHERRY	DATE 28/JUN/13	THIS DRAWING CONTAINS INFORMATION THAT IS PROPRIETARY TO TXGA INDUSTRIAL ELECTRONICS(S.Z)CO.,LTD AND SHOULD NOT BE USED WITHOUT WRITTEN PERMISSION			

REV	LOCATIONS	DESCRIPTION	DATE	REVISER	APPD
1	△	Add marking code	13/Jan/25	NICK	LEO

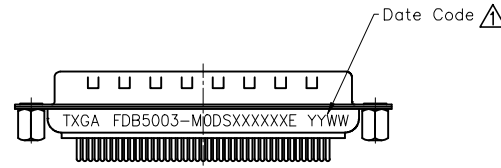
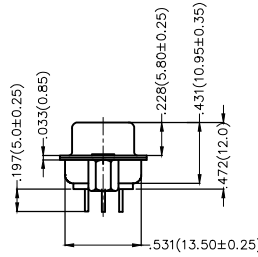
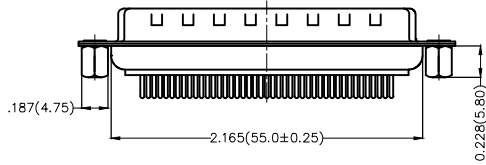
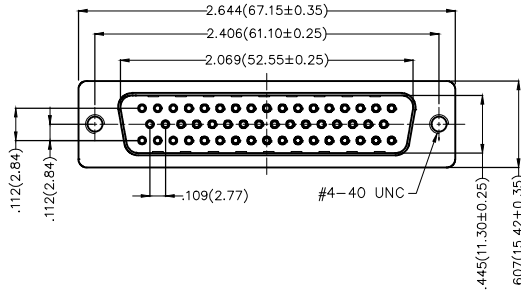
SPECIFICATIONS

Electrical

Current Rating: 3A AC(rms)/DC  
Voltage Rating: 250V AC(rms)/DC  
Contact Resistance: 25 mΩ Max  
Insulation Resistance: 1000 MΩ Min  
Withstanding Voltage: 500V AC r.m.s  
Temperature Range—Operating: -55°C~+105°C

Material and plating

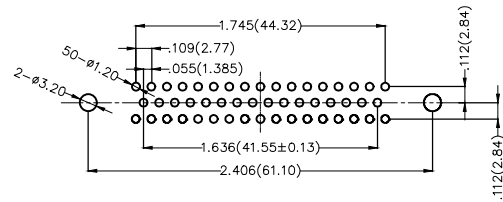
Housing: PBT UL 94V-0  
Contact: Copper Alloy/ Gold Plated/  
Selective gold in contact area, tin on tail  
Shell: SPCC/ Nickel Plated  
Screws: Copper Alloy/ Nickel Plated




Ordering Information

FDB 50 03 - M0 D S X XX XX X E  
1 2 3 4 5 6 7 8 9 10 11

1 Category FDB- D-SUB Connector	2 Circuits 50-50 Circuits	3 Distinction No. 03	4 Type M0-Male	5 Assembly Layout D-DIP	6 Entry Angle S-180° Vertical
7 Plating 1-Gold Plated 3-Selective gold in contact area, tin on tail	8 Thickness of Plating 00-Gold Flash 03-3μ" Custom Plate Available	9 Color-Resin K6-Black U1-Blue	10 Packaging K-Tray L-Tube	11 Distinction Type E-E Type	



Recommended P.C.Board Layout

THIRD ANGLE PROJECTION	GENERAL TOLERANCES (UNLESS SPECIFIED)		APPROVE BY FRANK	DATE 28/JUN/13	PART NO. FDB5003-M0DSXXXXXE	ITEM NO. FDB5003	 Leader Of Industry
	DESIGN UNITS Inch (metric)	X.±.012(0.30) X.X±.008(0.20) X.XX±.006(0.15) X.XXX±.004(0.10)	X.±5" .X±2" .XX±1" .XXX±0.5"	CHECKED BY JACOB	DATE 28/JUN/13	TITLE D-SUB connector 50 Circuits 180° Vertical Male	
SCALE 5:1	SIZE A4		DRAWN BY CHERRY	DATE 28/JUN/13	THIS DRAWING CONTAINS INFORMATION THAT IS PROPRIETARY TO TXGA INDUSTRIAL ELECTRONICS(S.Z)CO.,LTD AND SHOULD NOT BE USED WITHOUT WRITTEN PERMISSION		

REV 1 SHEET NO. 1/1

REV	LOCATIONS	DESCRIPTION	DATE	REVISER	APPD
1	△	Size changes	15/NOV/21	MATT	CHERRY
2	△	Add marking code	13/Jan/25	NICK	LEO

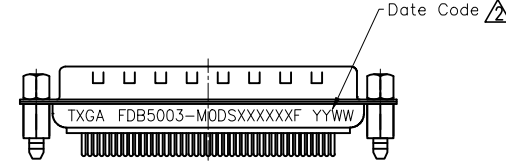
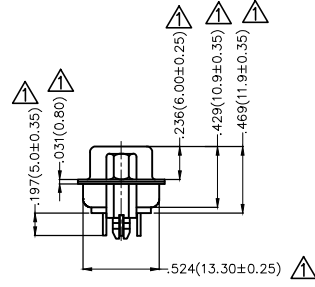
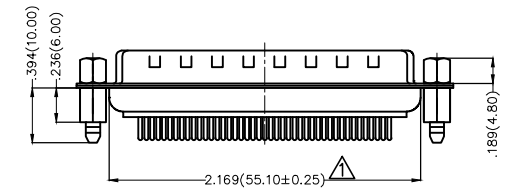
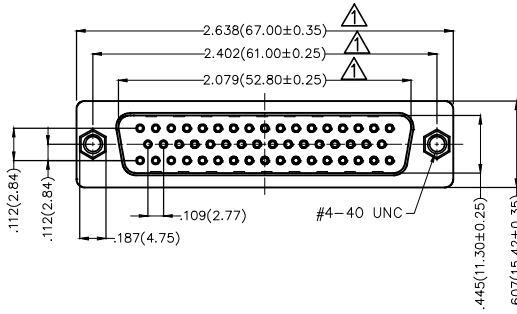
SPECIFICATIONS

Electrical

Current Rating: 3A AC(rms)/DC  
Voltage Rating: 250V AC(rms)/DC  
Contact Resistance: 30 mΩ Max  
Insulation Resistance: 1000 MΩ Min  
Withstanding Voltage: 500V AC r.m.s  
Temperature Range—Operating: -55°C~+105°C

Material and plating

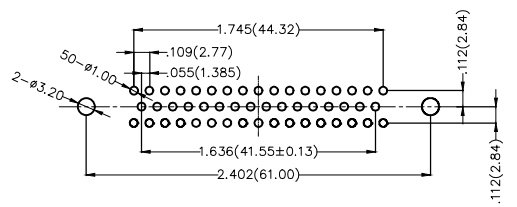
Housing: PBT UL 94V-0  
Contact: Copper Alloy/ Gold Plated/  
Selective gold in contact area, tin on tail  
Shell: SPCC/ Nickel Plated  
Screws: Copper Alloy/ Nickel Plated  
Board Lock: Copper Alloy/ Tin Plated



Ordering Information

FDB 50 03 - M0 D S X XX XX X F  
1 2 3 4 5 6 7 8 9 10 11

1 Category FDB- D-SUB Connector	2 Circuits 50-50 Circuits	3 Distinction No. 03	4 Type M0-Male	5 Assembly Layout D-DIP	6 Entry Angle S-180° Vertical
7 Plating 1-Gold Plated 3-Selective gold in contact area, tin on tail	8 Thickness of Plating 00-Gold Flash 03-3μ" Custom Plate Available	9 Color-Resin K6-Black U1-Blue	10 Packaging K-Tray L-Tube	11 Distinction Type F-F Type	



Recommended P.C.Board Layout

THIRD ANGLE PROJECTION	GENERAL TOLERANCES (UNLESS SPECIFIED)		APPROVE BY FRANK	DATE 28/JUN/13	PART NO. FDB5003-M0DSXXXXXF	ITEM NO. FDB5003	 Leader Of Industry	
	DESIGN UNITS Inch (metric)	X.±.012(0.30) X.X±.008(0.20) X.XX±.006(0.15) X.XXX±.004(0.10)	X.±5" .X'±2" .XX'±1" .XXX'±0.5"	CHECKED BY JACOB	DATE 28/JUN/13	TITLE D-SUB connector 50 Circuits 180° Vertical Male		REV 2
SCALE 5:1	SIZE A4		DRAWN BY CHERRY	DATE 28/JUN/13	THIS DRAWING CONTAINS INFORMATION THAT IS PROPRIETARY TO TXGA INDUSTRIAL ELECTRONICS(S.Z)CO.,LTD AND SHOULD NOT BE USED WITHOUT WRITTEN PERMISSION			

REV	LOCATIONS	DESCRIPTION	DATE	REVISER	APPD
1	△	Add marking code	13/Jan/25	NICK	LEO

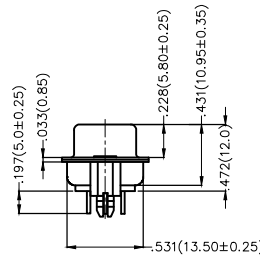
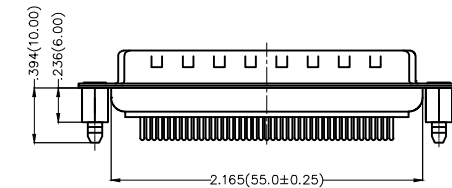
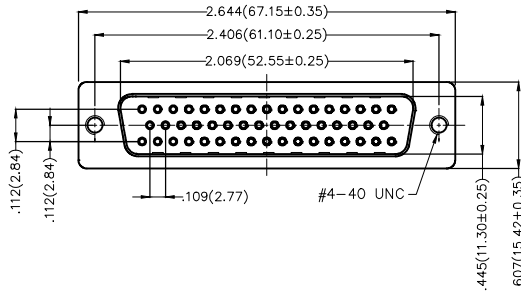
SPECIFICATIONS

Electrical

Current Rating: 3A AC(rms)/DC  
Voltage Rating: 250V AC(rms)/DC  
Contact Resistance: 25 mΩ Max  
Insulation Resistance: 1000 MΩ Min  
Withstanding Voltage: 500V AC r.m.s  
Temperature Range-Operating: -55°C~+105°C

Material and plating

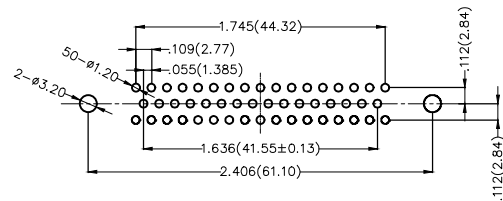
Housing: PBT UL 94V-0  
Contact: Copper Alloy/ Gold Plated/  
Selective gold in contact area, tin on tail  
Shell: SPCC/ Nickel Plated  
Board Lock: Copper Alloy/ Tin Plated




Ordering Information

FDB 50 03 - M0 D S X XX XX X G  
1 2 3 4 5 6 7 8 9 10 11

1 Category FDB- D-SUB Connector	2 Circuits 50-50 Circuits	3 Distinction No. 03	4 Type M0-Male	5 Assembly Layout D-DIP	6 Entry Angle S-180° Vertical
7 Plating 1-Gold Plated 3-Selective gold in contact area, tin on tail	8 Thickness of Plating 00-Gold Flash 03-3μ" Custom Plate Available	9 Color-Resin K6-Black U1-Blue	10 Packaging K-Tray L-Tube	11 Distinction Type G-G Type	



Recommended P.C.Board Layout

THIRD ANGLE PROJECTION	GENERAL TOLERANCES (UNLESS SPECIFIED)		APPROVE BY FRANK	DATE 28/JUN/13	PART NO. FDB5003-M0DSXXXXXXG	ITEM NO. FDB5003	 Leader Of Industry	
	DESIGN UNITS Inch (metric)	X.±.012(0.30) X.X±.008(0.20) X.XX±.006(0.15) X.XXX±.004(0.10)	X.±5" .X'±2" .XX'±1" .XXX'±0.5"	CHECKED BY JACOB	DATE 28/JUN/13	TITLE D-SUB connector 50 Circuits 180° Vertical Male		REV 1
SCALE 5:1	SIZE A4		DRAWN BY CHERRY	DATE 28/JUN/13	THIS DRAWING CONTAINS INFORMATION THAT IS PROPRIETARY TO TXGA INDUSTRIAL ELECTRONICS(S.Z)CO.,LTD AND SHOULD NOT BE USED WITHOUT WRITTEN PERMISSION			