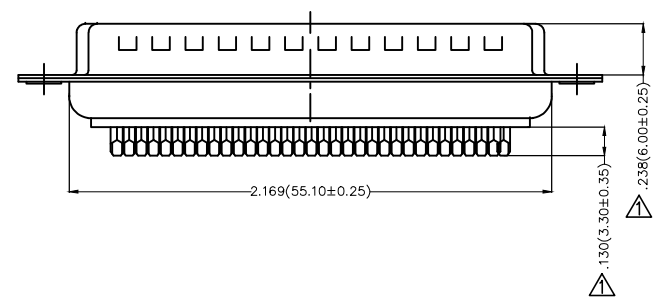
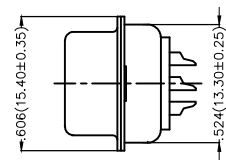
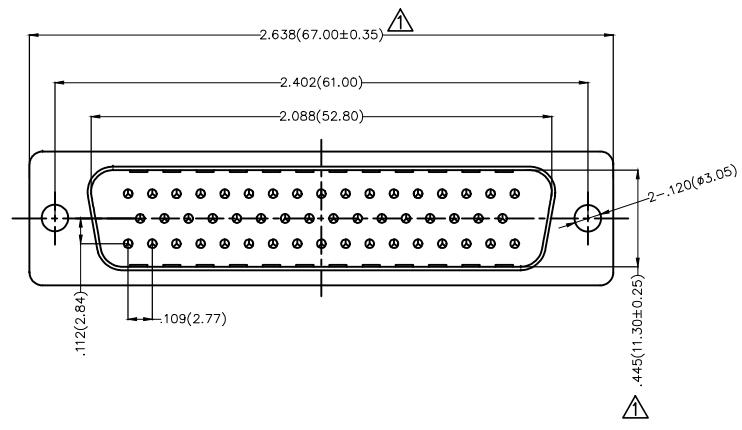
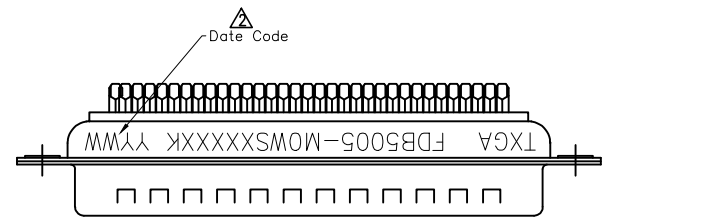


REV	LOCATIONS	DESCRIPTION	DATE	REVISER	APPD
1	△	Size changes	10/FEB/22	MATT	CHERRY
2	△	Add spray code	13/Jan/25	NICK	LEO



SPECIFICATIONS

Electrical
 Current Rating: 3A AC(rms)/DC
 Voltage Rating: 250V AC(rms)/DC
 Contact Resistance: 30 MΩ Max
 Insulation Resistance: 1000 MΩ MIN
 Withstanding Voltage: 500V AC r.m.s
 Operating Temperature: -55°C~+105°C

Material
 Housing: PBT 30%G.F UL 94V-0
 Contact: Brass/ Gold/Tin-Plated

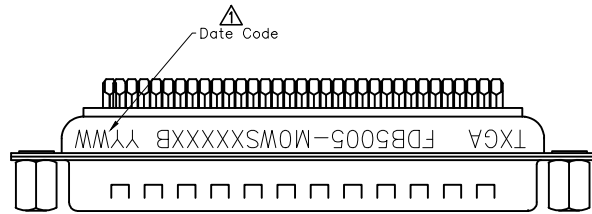
Ordering Information

FDB 50 05 — M O W S X XX XX K
 1 2 3 4 5 6 7 8 9 10

1 Category FDB- D-SUB Connector	2 Circuits 50-50 Circuits	3 Distinction No. 05	4 Type M0-Male	5 Assembly Layout W-Welding Type	6 Entry Angle S-180° Vertical
7 Plating 1-Gold Plated 3-Selective gold in contact area, tin on tail	8 Thickness of Plating 00-Gold Flash 03-3μ" Custom Plate Available	9 Color-Resin K6-Black U1-Blue	10 Packaging K-Tray		

 THIRD ANGLE PROJECTION	GENERAL TOLERANCES (UNLESS SPECIFIED)		APPROVE BY FRANK	DATE 13/JUN/11	PART NO. FDB5005-MOWSXXXXXK	ITEM NO. FDB5005	 Building Technology Cornerstone	
	DESIGN UNITS Inch (metric)	X.±.012(0.30)	X.'±5'	CHECKED BY FAN	DATE 13/JUN/11	TITLE D-SUB connector 50 Circuits 180° Vertical Male		REV 2
SCALE 5:1	SIZE A4	X.XX±.008(0.20)	X'±2'	DRAWN BY CHERRY	DATE 13/JUN/11	THIS DRAWING CONTAINS INFORMATION THAT IS PROPRIETARY TO TXGA INDUSTRIAL ELECTRONICS(S.Z)CO.,LTD AND SHOULD NOT BE USED WITHOUT WRITTEN PERMISSION		

REV	LOCATIONS	DESCRIPTION	DATE	REVISER	APPD
1	▲	Add spray code	13/Jan/25	NICK	LEO



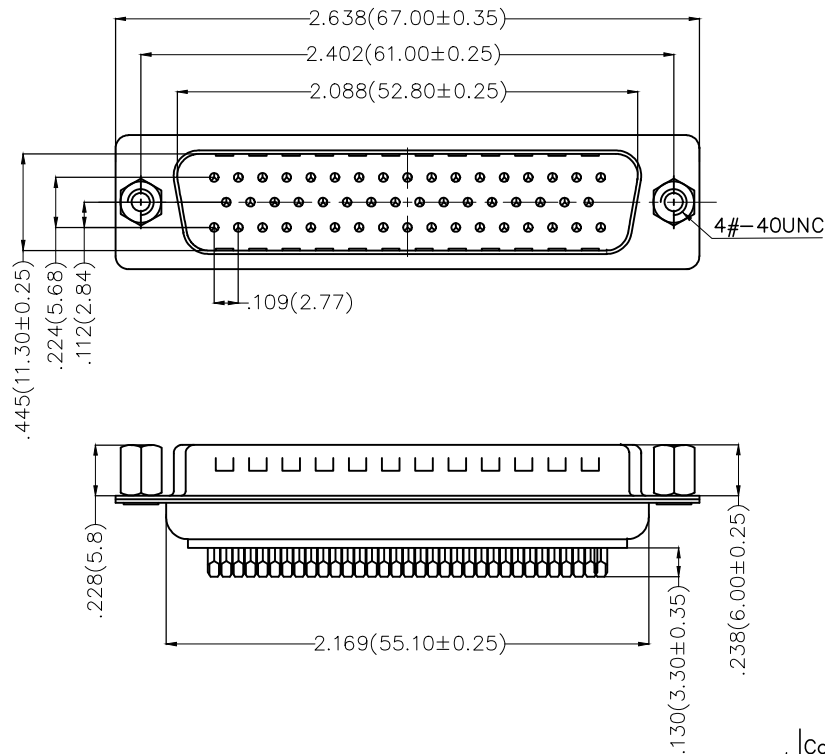
SPECIFICATIONS

Electrical

Current Rating: 3A AC(rms)/DC
Voltage Rating: 250V AC(rms)/DC
Contact Resistance: 30 MΩ Max
Insulation Resistance: 1000 MΩ MIN
Withstanding Voltage: 500V AC r.m.s
Operating Temperature: -55°C~+105°C

Material

Housing: PBT+30%G.F (UL94V-0)
Contact: Phosphor Bronze Gold/Tin-Plated



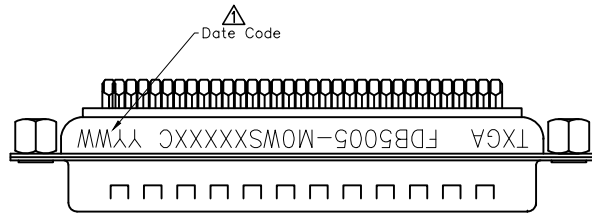
Ordering Information

FDB 50 05 - M0 W S X XX XX K B
1 2 3 4 5 6 7 8 9 10 11

1	Category FDB- D-SUB Connector	2	Circuits 50-50 Circuits	3	Distinction No. 05	4	Type M0-Male	5	Assembly Layout W-Welding Type	6	Entry Angle S-180° Vertical
7	Plating 1-Gold Plated 3-Selective gold in contact area, tin on tail	8	Thickness of Plating 00-Gold Flash 03-3μ" Custom Plate Available	9	Color-Resin K6-Black U1-Blue	10	Packaging K-Tray	11	Distinction Type B-B Type		

 THIRD ANGLE PROJECTION	GENERAL TOLERANCES (UNLESS SPECIFIED)		APPROVE BY FRANK	DATE 25/DEC/23	PART NO. FDB5005-MOWSXXXXXB	ITEM NO. FDB5005	 Building Technology Cornerstone	
	DESIGN UNITS Inch (metric)	X.±.012(0.30)	X.±5'	CHECKED BY FAN	DATE 25/DEC/23	TITLE D-SUB connector 50 Circuits 180° Vertical Male		REV 1
SCALE 5:1	SIZE A4	X.XX±.008(0.20)	X'±2'	DRAWN BY MATT	DATE 25/DEC/23	THIS DRAWING CONTAINS INFORMATION THAT IS PROPRIETARY TO TXGA INDUSTRIAL ELECTRONICS(S.Z)CO.,LTD AND SHOULD NOT BE USED WITHOUT WRITTEN PERMISSION		

REV	LOCATIONS	DESCRIPTION	DATE	REVISER	APPD
1	△	Add spray code	13/Jan/25	NICK	LEO



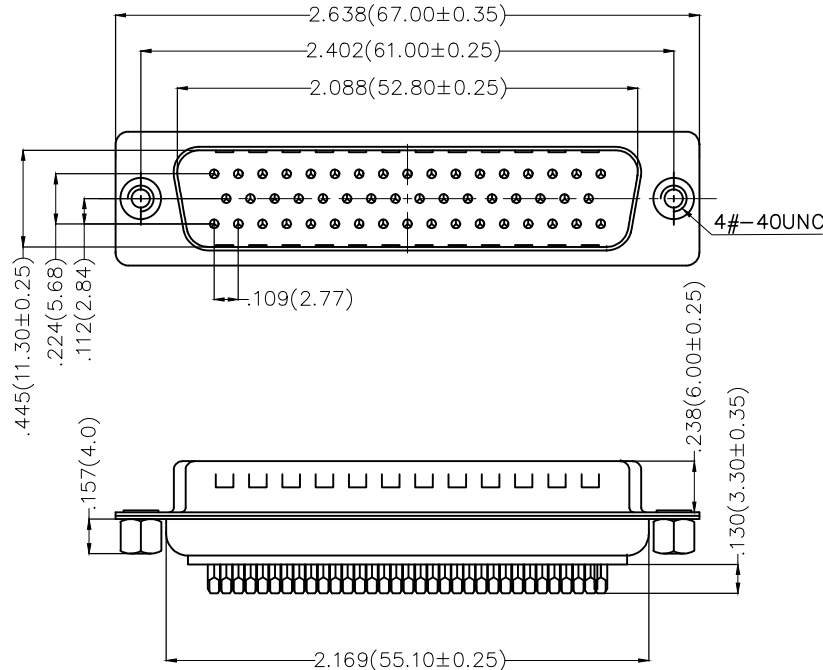
SPECIFICATIONS

Electrical

Current Rating: 3A AC(rms)/DC
Voltage Rating: 250V AC(rms)/DC
Contact Resistance: 30 MΩ Max
Insulation Resistance: 1000 MΩ MIN
Withstanding Voltage: 500V AC r.m.s
Operating Temperature: -55°C~+105°C

Material

Housing: PBT+30%G.F (UL94V-0)
Contact: Phosphor Bronze Gold/Tin-Plated



Ordering Information

FDB 50 05 - M0 W S X XX XX K C
1 2 3 4 5 6 7 8 9 10 11

1	Category FDB- D-SUB Connector	2	Circuits 50-50 Circuits	3	Distinction No. 05	4	Type M0-Male	5	Assembly Layout W-Welding Type	6	Entry Angle S-180° Vertical
7	Plating 1-Gold Plated 3-Selective gold in contact area, tin on tail	8	Thickness of Plating 00-Gold Flash 03-3μ" Custom Plate Available	9	Color-Resin K6-Black U1-Blue	10	Packaging K-Tray	11	Distinction Type C-C Type		

 THIRD ANGLE PROJECTION	GENERAL TOLERANCES (UNLESS SPECIFIED)		APPROVE BY FRANK	DATE 25/DEC/23	PART NO. FDB5005-MOWSXXXXXC	ITEM NO. FDB5005	 Building Technology Cornerstone	
	DESIGN UNITS Inch (metric)	X.±.012(0.30)	X.'±5'	CHECKED BY FAN	DATE 25/DEC/23	TITLE D-SUB connector 50 Circuits 180° Vertical Male		REV 1
SCALE 5:1	SIZE A4	X.XX±.006(0.15)	.XX'±1'	DRAWN BY MATT	DATE 25/DEC/23	THIS DRAWING CONTAINS INFORMATION THAT IS PROPRIETARY TO TXGA INDUSTRIAL ELECTRONICS(S.Z)CO.,LTD AND SHOULD NOT BE USED WITHOUT WRITTEN PERMISSION		