

REV	LOCATIONS	DESCRIPTION	DATE	REVISED	APPD
1	△	Add marking code/Size changes	13/Jan/25	NICK	LEO

**SPECIFICATIONS**

**Electrical**

Current Rating: 3A AC(rms)/DC  
Voltage Rating: 250V AC(rms)/DC  
Contact Resistance: 25 mΩ Max  
Insulation Resistance: 1000 MΩ Min  
Withstanding Voltage: 500V AC r.m.s  
Temperature Range—Operating: -55°C~+105°C


**Material and plating**

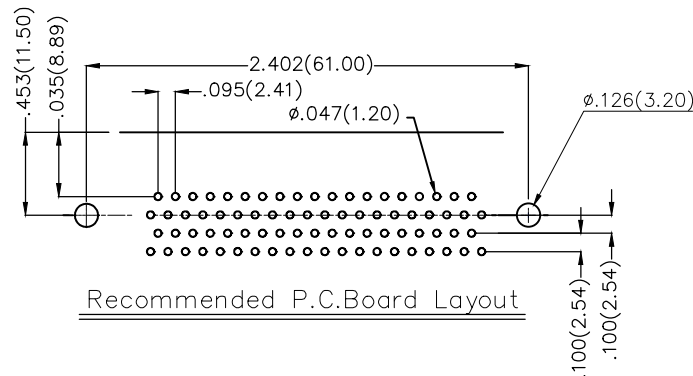
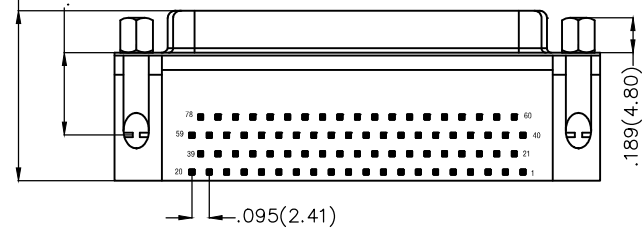
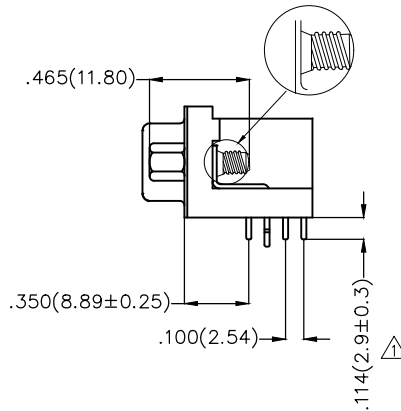
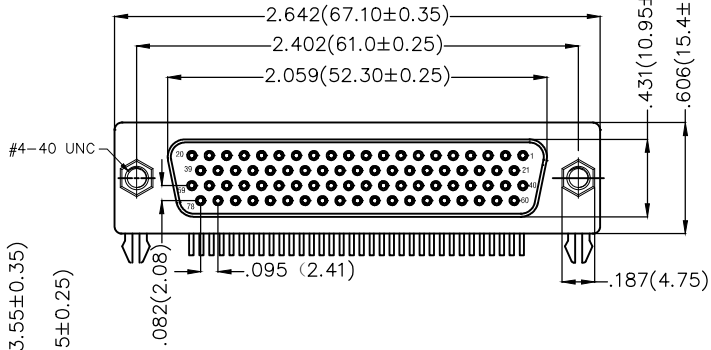
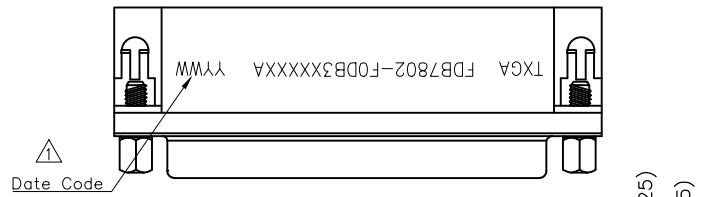
Housing: PBT UL 94V-0  
Contact: Copper Alloy/  
Selective gold in contact area, tin on tail  
Shell: SPCC/ Nickel Plated  
Board Lock: Copper Alloy/ Tin Plated  
Screws: Copper Alloy/ Nickel Plated

**Ordering Information**

FDB 78 02 - F0 D B 3 XX XX X A  
1 2 3 4 5 6 7 8 9 10 11

1 Category FDB- D-SUB Connector	2 Circuits 78-78 Circuits	3 Distinction No. 02	4 Type F0-Female	5 Assembly Layout D-DIP	6 Entry Angle B-90° Angle
7 Plating 3-Selective gold in contact area, tin on tail	8 Thickness of Plating 00-Gold Flash 03-3μ" Custom Plate Available	9 Color-Resin K6-Black U1-Blue	10 Packaging K-Tray L-Tube	11 Distinction Type A-A Type	

THIRD ANGLE PROJECTION	GENERAL TOLERANCES (UNLESS SPECIFIED)		APPROVE BY FRANK	DATE 28/JUN/13	PART NO. FDB7802-F0DB3XXXXXA	ITEM NO. FDB7802	 Leader Of Industry	
	DESIGN UNITS Inch (metric)	X.±.012(0.30) X.X±.008(0.20) X.XX±.006(0.15) X.XXX±.004(0.10)	X.±5' .X'±2' .XX'±1' .XXX'±0.5'	CHECKED BY JACOB	DATE 28/JUN/13	TITLE D-SUB connector 78 Circuits 90° Angle Female		REV 1
SCALE 5:1	SIZE A4	DRAWN BY CHERRY		DATE 28/JUN/13	THIS DRAWING CONTAINS INFORMATION THAT IS PROPRIETARY TO TXGA INDUSTRIAL ELECTRONICS(S.Z)CO.,LTD AND SHOULD NOT BE USED WITHOUT WRITTEN PERMISSION			



Recommended P.C.Board Layout

REV	LOCATIONS	DESCRIPTION	DATE	REVISED	APPD
1	△	Add marking code/Size changes	13/Jan/25	NICK	LEO

**SPECIFICATIONS**

**Electrical**

Current Rating: 3A AC(rms)/DC  
Voltage Rating: 250V AC(rms)/DC  
Contact Resistance: 25 mΩ Max  
Insulation Resistance: 1000 MΩ Min  
Withstanding Voltage: 500V AC r.m.s  
Temperature Range-Operating: -55°C~+105°C

**Material and plating**

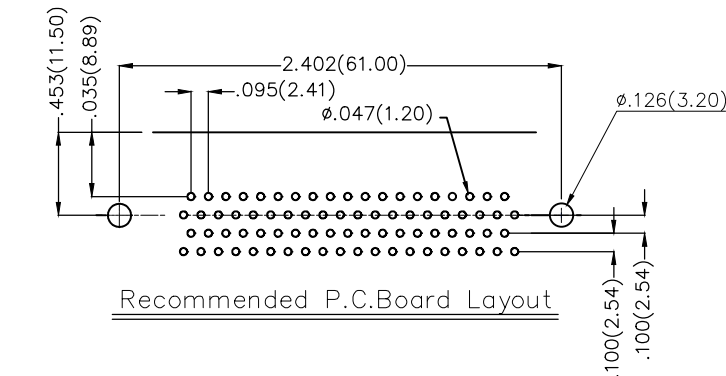
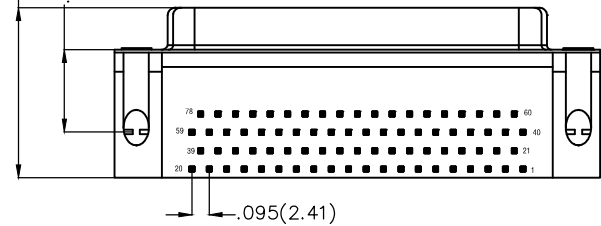
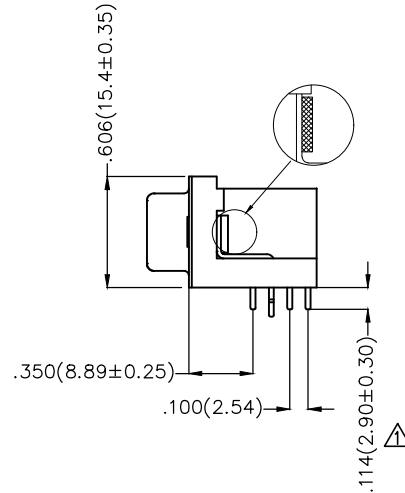
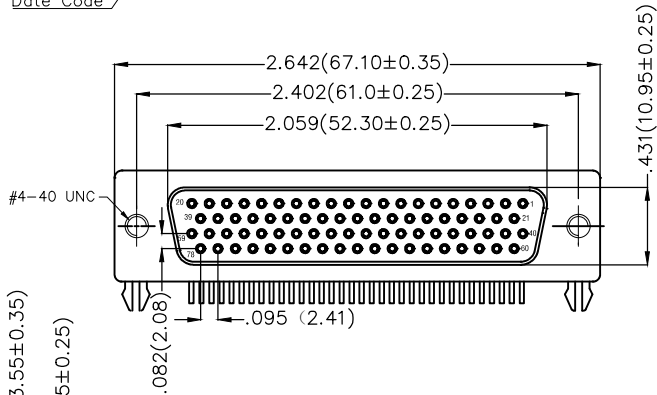
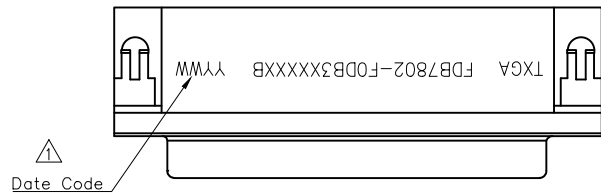
Housing: PBT UL 94V-0  
Contact: Copper Alloy/  
Selective gold in contact area, tin on tail  
Shell: SPCC/ Nickel Plated  
Board Lock: Copper Alloy/ Tin Plated

**Ordering Information**

FDB 78 02 - F0 D B 3 XX XX X B  
1 2 3 4 5 6 7 8 9 10 11

1 Category FDB- D-SUB Connector	2 Circuits 78-78 Circuits	3 Distinction No. 02	4 Type F0-Female	5 Assembly Layout D-DIP	6 Entry Angle B-90° Angle
7 Plating 3-Selective gold in contact area, tin on tail	8 Thickness of Plating 00-Gold Flash 03-3μ" Custom Plate Available	9 Color-Resin K6-Black U1-Blue	10 Packaging K-Tray L-Tube	11 Distinction Type B-B Type	

<p>THIRD ANGLE PROJECTION</p>	GENERAL TOLERANCES (UNLESS SPECIFIED)		APPROVE BY FRANK	DATE 28/JUN/13	PART NO. FDB7802-F0DB3XXXXXB	ITEM NO. FDB7802	<p>Leader Of Industry</p>		
	DESIGN UNITS Inch (metric)	X.±.012(0.30) X.X±.008(0.20) X.XX±.006(0.15) X.XXX±.004(0.10)	X.±5° .X±2° .XX±1° .XXX±0.5°	CHECKED BY JACOB	DATE 28/JUN/13	TITLE D-SUB connector 78 Circuits 90° Angle Female		REV 1	SHEET NO. 1/1
	SCALE 5:1	SIZE A4		DRAWN BY CHERRY	DATE 28/JUN/13	THIS DRAWING CONTAINS INFORMATION THAT IS PROPRIETARY TO TXGA INDUSTRIAL ELECTRONICS(S.Z)CO.,LTD AND SHOULD NOT BE USED WITHOUT WRITTEN PERMISSION			



Recommended P.C.Board Layout

REV	LOCATIONS	DESCRIPTION	DATE	REVISER	APPD
1	△	Size changes	11/JUN/21	KATE	CHERRY
2	△	Add marking code	13/Jan/25	NICK	LEO

**SPECIFICATIONS**

**Electrical**

Current Rating: 3A AC(rms)/DC  
Voltage Rating: 250V AC(rms)/DC  
Contact Resistance: 25 mΩ Max  
Insulation Resistance: 1000 MΩ Min  
Withstanding Voltage: 500V AC r.m.s  
Temperature Range—Operating: -55°C~+105°C

**Material and plating**

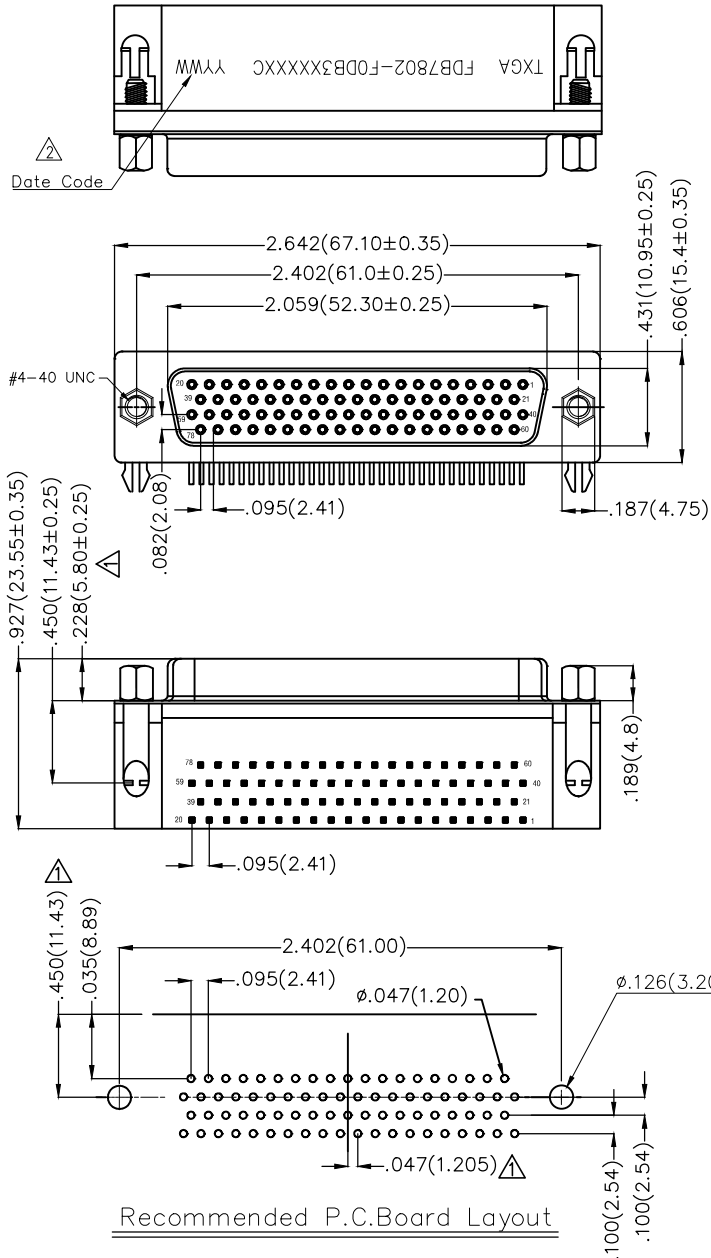
Housing: PBT UL 94V-0  
Contact: Copper Alloy/  
Selective gold in contact area, tin on tail  
Shell: SPCC/ Nickel Plated  
Board Lock: Copper Alloy/ Tin Plated  
Screws: Copper Alloy/ Nickel Plated

**Ordering Information**

FDB 78 02 - F0 D B 3 XX XX X C  
1 2 3 4 5 6 7 8 9 10 11

1 Category FDB- D-SUB Connector	2 Circuits 78-78 Circuits	3 Distinction No. 02	4 Type F0-Female	5 Assembly Layout D-DIP	6 Entry Angle B-90° Angle
7 Plating 3-Selective gold in contact area, tin on tail	8 Thickness of Plating 00-Gold Flash 03-3μ" Custom Plate Available	9 Color-Resin K6-Black U1-Blue	10 Packaging K-Tray L-Tube	11 Distinction Type C-C Type	

 THIRD ANGLE PROJECTION	GENERAL TOLERANCES (UNLESS SPECIFIED)		APPROVE BY FRANK	DATE 28/JUN/13	PART NO. FDB7802-F0DB3XXXXXC	ITEM NO. FDB7802	 Leader Of Industry	
	DESIGN UNITS Inch (metric)	X.±.012(0.30)	X.±5'	CHECKED BY JACOB	DATE 28/JUN/13	TITLE D-SUB connector 78 Circuits 90° Angle Female		REV 2
SCALE 5:1	SIZE A4	X.XX±.006(0.15)	.XX±1'	DRAWN BY CHERRY	DATE 28/JUN/13	THIS DRAWING CONTAINS INFORMATION THAT IS PROPRIETARY TO TXGA INDUSTRIAL ELECTRONICS(S.Z)CO.,LTD AND SHOULD NOT BE USED WITHOUT WRITTEN PERMISSION		



Recommended P.C.Board Layout

REV	LOCATIONS	DESCRIPTION	DATE	REVISED	APPD
1	△	Add marking code/Size changes	13/Jan/25	NICK	LEO

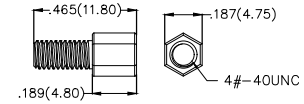
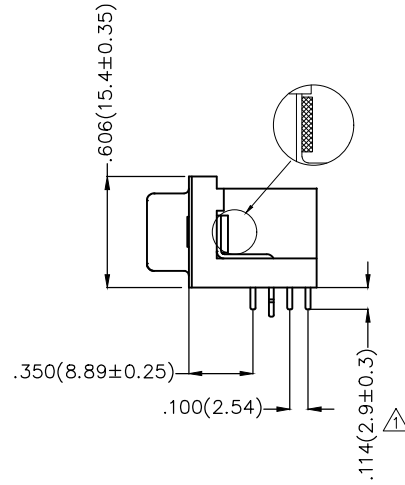
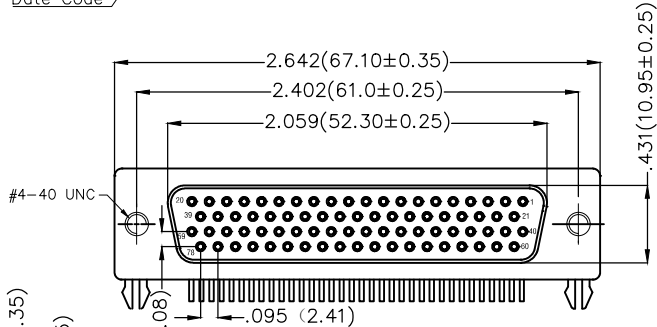
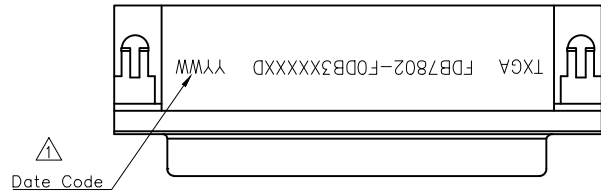
**SPECIFICATIONS**

**Electrical**

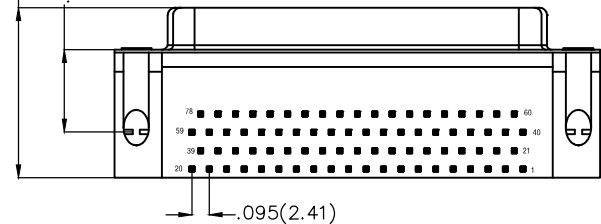
Current Rating: 3A AC(rms)/DC  
Voltage Rating: 250V AC(rms)/DC  
Contact Resistance: 25 mΩ Max  
Insulation Resistance: 1000 MΩ Min  
Withstanding Voltage: 500V AC r.m.s  
Temperature Range-Operating: -55°C~+105°C

**Material and plating**

Housing: PBT UL 94V-0  
Contact: Copper Alloy/  
Selective gold in contact area, tin on tail  
Shell: SPCC/ Nickel Plated  
Board Lock: Copper Alloy/ Tin Plated  
Screws: Copper Alloy/ Nickel Plated



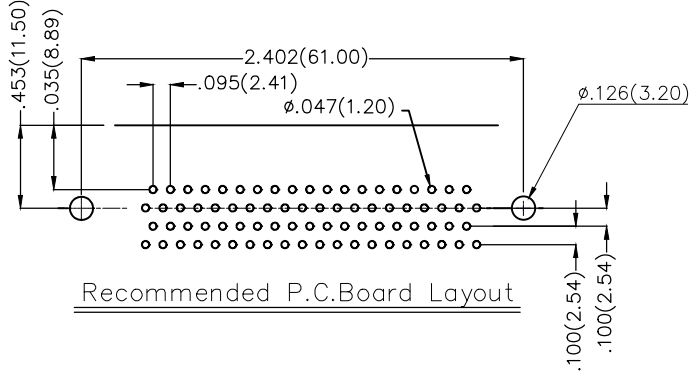
Screw (2pcs)




**Ordering Information**

FDB 78 02 - F0 D B 3 XX XX X D  
1 2 3 4 5 6 7 8 9 10 11

1 Category FDB- D-SUB Connector	2 Circuits 78-78 Circuits	3 Distinction No. 02	4 Type F0-Female	5 Assembly Layout D-DIP	6 Entry Angle B-90° Angle
7 Plating 3-Selective gold in contact area, tin on tail	8 Thickness of Plating 00-Gold Flash 03-3μ" Custom Plate Available	9 Color-Resin K6-Black U1-Blue	10 Packaging K-Tray L-Tube	11 Distinction Type D-D Type	



Recommended P.C.Board Layout

THIRD ANGLE PROJECTION	GENERAL TOLERANCES (UNLESS SPECIFIED)		APPROVE BY FRANK	DATE 28/JUN/13	PART NO. FDB7802-F0DB3XXXXD	ITEM NO. FDB7802	 Leader Of Industry	
	DESIGN UNITS Inch (metric)	X.±.012(0.30) X.X±.008(0.20) X.XX±.006(0.15) X.XXX±.004(0.10)	X.±5° .X'±2° .XX'±1° .XXX'±0.5°	CHECKED BY JACOB	DATE 28/JUN/13	TITLE D-SUB connector 78 Circuits 90° Angle Female		REV 1
SCALE 5:1	SIZE A4		DRAWN BY CHERRY	DATE 28/JUN/13	THIS DRAWING CONTAINS INFORMATION THAT IS PROPRIETARY TO TXGA INDUSTRIAL ELECTRONICS(S.Z)CO.,LTD AND SHOULD NOT BE USED WITHOUT WRITTEN PERMISSION			

REV	LOCATIONS	DESCRIPTION	DATE	REVISED	APPD

**SPECIFICATIONS**

**Electrical**

Current Rating: 3A AC(rms)/DC  
 Voltage Rating: 250V AC(rms)/DC  
 Contact Resistance: 25 mΩ Max  
 Insulation Resistance: 1000 MΩ Min  
 Withstanding Voltage: 500V AC r.m.s  
 Temperature Range-Operating: -55°C~+105°C

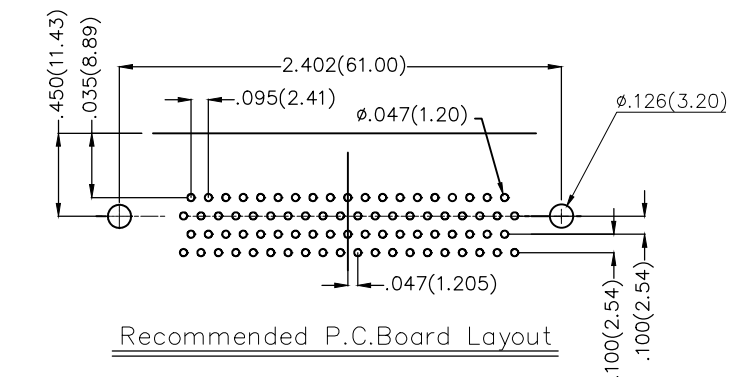
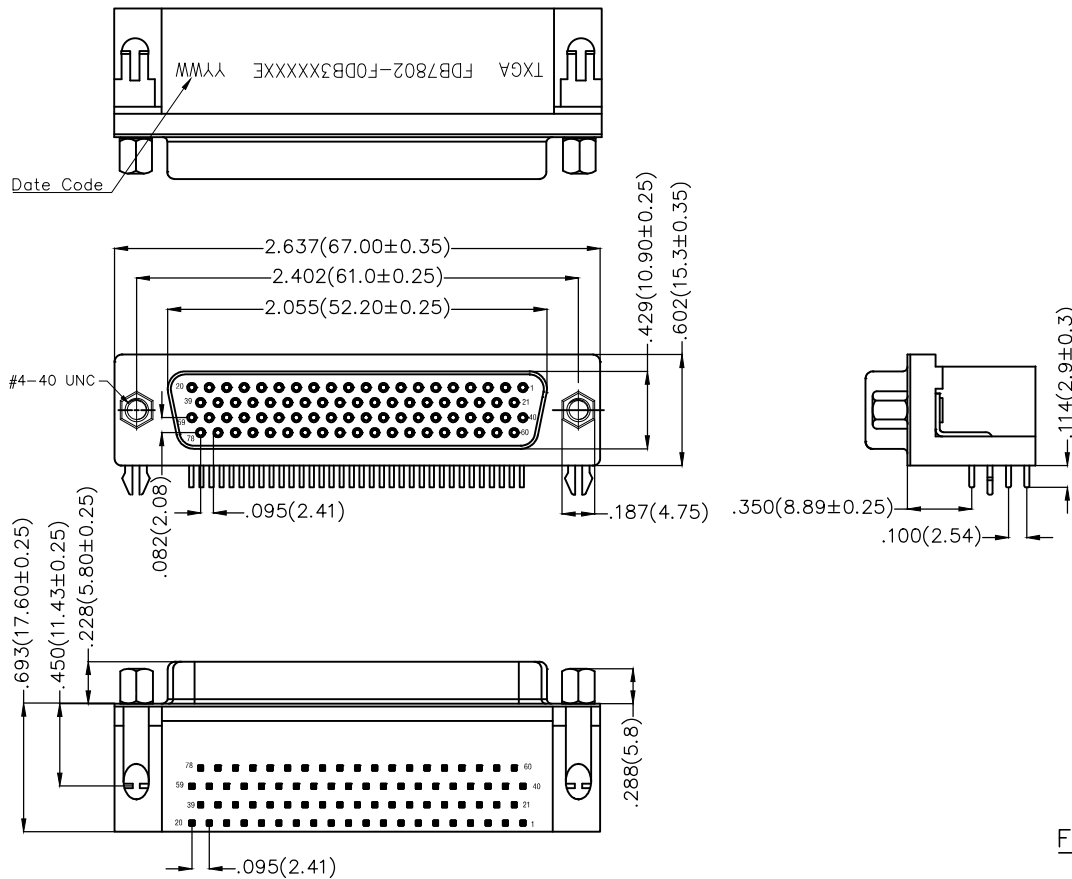
**Material and plating**


Housing: PBT UL 94V-0  
 Contact: Copper Alloy/  
 Selective gold in contact area, tin on tail  
 Shell: SPCC/ Nickel Plated  
 Board Lock: Copper Alloy/ Tin Plated  
 Nut: Copper Alloy/ Nickel Plated

**Ordering Information**

FDB 78 02 - F0 D B 3 XX XX X E  
 1 2 3 4 5 6 7 8 9 10 11

1 Category FDB- D-SUB Connector	2 Circuits 78-78 Circuits	3 Distinction No. 02	4 Type F0-Female	5 Assembly Layout D-DIP	6 Entry Angle B-90° Angle
7 Plating 3-Selective gold in contact area, tin on tail	8 Thickness of Plating 00-Gold Flash 03-3μ" Custom Plate Available	9 Color-Resin K6-Black	10 Packaging K-Tray	11 Distinction Type E-E Type	



THIRD ANGLE PROJECTION	GENERAL TOLERANCES (UNLESS SPECIFIED)		APPROVE BY FRANK	DATE 28/JUN/13	PART NO. FDB7802-F0DB3XXXXXE	ITEM NO. FDB7802	 Building Technology Cornerstone
	DESIGN UNITS Inch (metric)	X.±.012(0.30) X.X±.008(0.20) X.XX±.006(0.15) X.XXX±.004(0.10)	X.±5° .X'±2° .XX'±1° .XXX'±0.5°	CHECKED BY JACOB	DATE 28/JUN/13	TITLE D-SUB connector 78 Circuits 90° Angle Female	
SCALE 5:1	SIZE A4	DRAWN BY CHERRY		DATE 28/JUN/13	THIS DRAWING CONTAINS INFORMATION THAT IS PROPRIETARY TO TXGA INDUSTRIAL ELECTRONICS(S.Z)CO.,LTD AND SHOULD NOT BE USED WITHOUT WRITTEN PERMISSION		

REV	LOCATIONS	DESCRIPTION	DATE	REVISED	APPD

**SPECIFICATIONS**

**Electrical**

Current Rating: 3A AC(rms)/DC  
Voltage Rating: 250V AC(rms)/DC  
Contact Resistance: 25 mΩ Max  
Insulation Resistance: 1000 MΩ Min  
Withstanding Voltage: 500V AC r.m.s  
Temperature Range-Operating: -55°C~+105°C


**Material and plating**

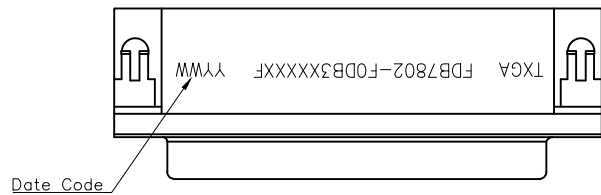
Housing: PBT UL 94V-0  
Contact: Copper Alloy/  
Selective gold in contact area, tin on tail  
Shell: SPCC/ Nickel Plated  
Board Lock: Copper Alloy/ Tin Plated

**Ordering Information**

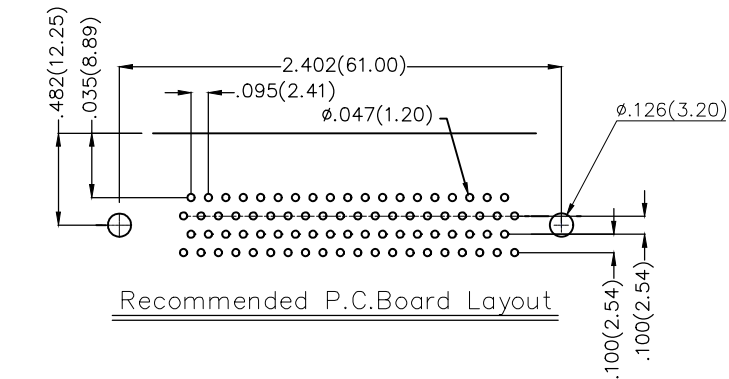
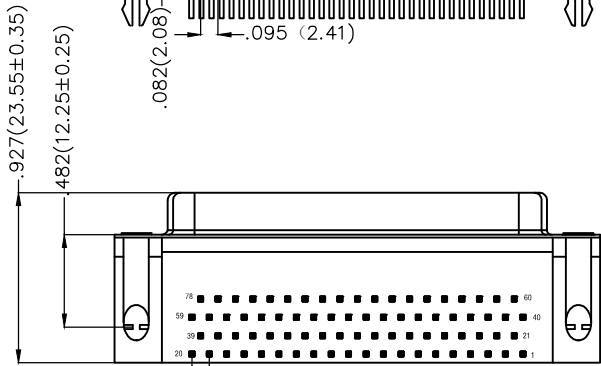
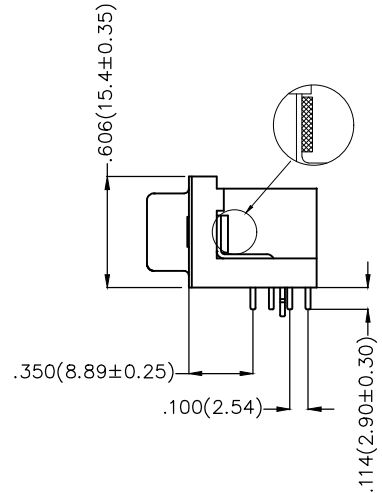
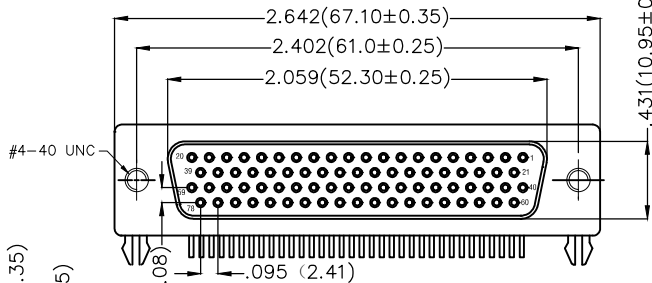
FDB 78 02 - F0 D B 3 XX XX X F  
1 2 3 4 5 6 7 8 9 10 11

1 Category FDB- D-SUB Connector	2 Circuits 78-78 Circuits	3 Distinction No. 02	4 Type F0-Female	5 Assembly Layout D-DIP	6 Entry Angle B-90° Angle
7 Plating 3-Selective gold in contact area, tin on tail	8 Thickness of Plating 00-Gold Flash 03-3μ" Custom Plate Available	9 Color-Resin K6-Black U1-Blue	10 Packaging K-Tray	11 Distinction Type F-F Type	

THIRD ANGLE PROJECTION	GENERAL TOLERANCES (UNLESS SPECIFIED)		APPROVE BY LEO	DATE 15/Nov/25	PART NO. FDB7802-F0DB3XXXXXF	ITEM NO. FDB7802	 Building Technology Cornerstone
	DESIGN UNITS Inch (metric)	X.±.012(0.30) X.X±.008(0.20) X.XX±.006(0.15) X.XXX±.004(0.10)	X.±5° .X±2° .XX±1° .XXX±0.5°	CHECKED BY GISELLE	DATE 15/Nov/25	TITLE D-SUB connector 78 Circuits 90° Angle Female	
SCALE 5:1	SIZE A4		DRAWN BY NICK	DATE 15/Nov/25	THIS DRAWING CONTAINS INFORMATION THAT IS PROPRIETARY TO TXGA INDUSTRIAL ELECTRONICS(S.Z)CO.,LTD AND SHOULD NOT BE USED WITHOUT WRITTEN PERMISSION		



Date Code



Recommended P.C.Board Layout