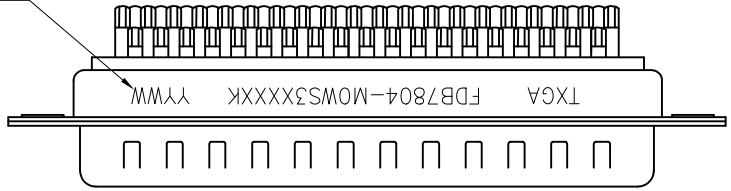


1 2 3 4 5 6 7 8

REV	LOCATIONS	DESCRIPTION	DATE	REVISER	APPD
1	△	ADD DIM	13/AUG/15	KEVIN	CHERRY
2	△	Size changes	04/JUN/21	KATE	CHERRY
3	△	Add marking code	13/Jan/25	NICK	LEO

△
Date Code



SPECIFICATIONS

Electrical

Current Rating: 3A AC(rms)/DC
 Voltage Rating: 250V AC(rms)/DC
 Contact Resistance: 30 mΩ Max
 Insulation Resistance: 1000 MΩ Min
 Withstanding Voltage: 500V AC r.m.s
 Temperature Range-Operating: -55°C~+105°C

Material and plating

Housing: PBT UL 94V-0
 Contact: Copper Alloy/
 Selective gold on contact area, tin on tail
 Front Shell: SPCC/ Nickel Plated
 Back Shell: SPCC/ Tin Plated

A

B

C

D

E

F

A

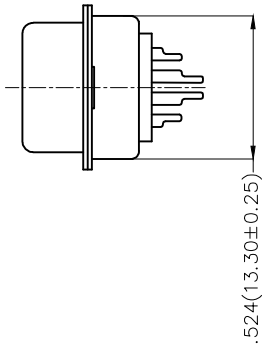
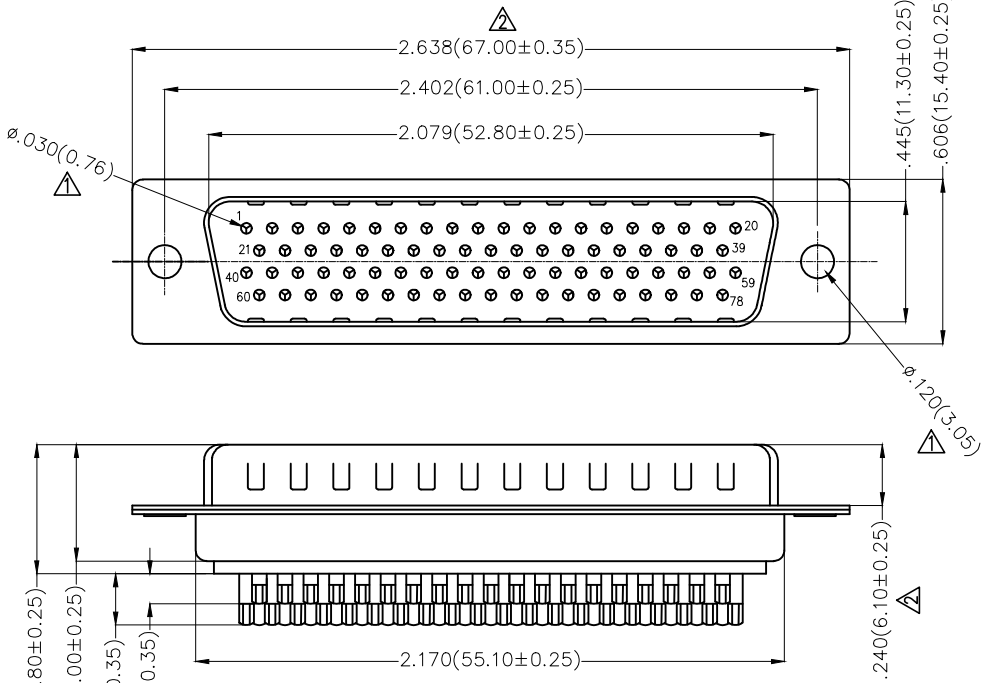
B

C

D

E

F



Ordering Information

FDB 78 04 - MOWS 3 XX XX K
 1 2 3 4 5 6 7 8 9 10

1	Category FDB- D-SUB Connector	2	Circuits 78-78 Circuits	3	Distinction No. 04	4	Type MO-Male	5	Assembly Layout W-Welding Type	6	Entry Angle S-180° Vertical
7	Plating 3-Selective gold on contact area, tin on tail	8	Thickness of Plating 00-Gold Flash 03-3μ" Custom Plate Available	9	Color-Resin K6-Black U1-Blue	10	Packaging K-Tray				

 THIRD ANGLE PROJECTION	GENERAL TOLERANCES (UNLESS SPECIFIED) X.±.012(0.30) X.±5' X.X±.008(0.20) .X±2' X.XX±.006(0.15) .XX±1" X.XXX±.004(0.10) .XXX±0.5"		APPROVE BY FRANK	DATE 28/JUN/13	PART NO. FDB7804-MOWS3XXXK	ITEM NO. FDB7804	 Leader Of Industry
	DESIGN UNITS Inch (metric)	SCALE 5:1	SIZE A4	CHECKED BY JACOB	DATE 28/JUN/13	TITLE D-SUB connector 78 Circuits 180° Vertical Male	
THIS DRAWING CONTAINS INFORMATION THAT IS PROPRIETARY TO TXGA INDUSTRIAL ELECTRONICS(S.Z)CO.,LTD AND SHOULD NOT BE USED WITHOUT WRITTEN PERMISSION							

1 2 3 4 5 6 7 8