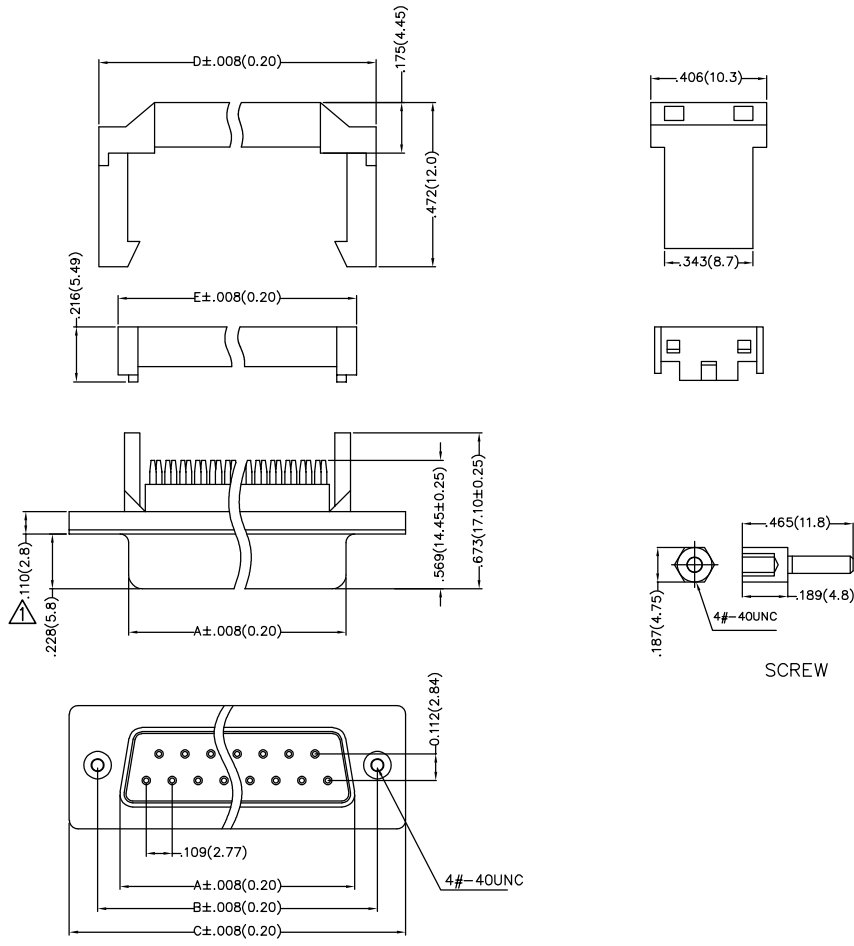
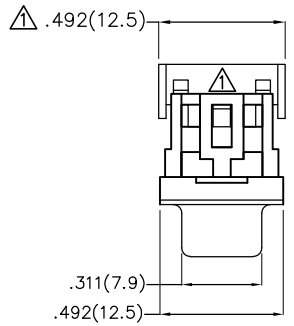


REV	LOCATIONS	DESCRIPTION	DATE	REVISER	APPD
1	▲	Size & Structural changes	28/AUG/23	MATT	LEO



Circuits (n)	Part No.	Dimensions(in/mm)				
		A	B	C	D	E ▲
9	FDBB02-09F0S3XXXXXK	0.643(16.33)	0.984(25.00)	1.216(30.80)	0.727(18.42)	0.591(15.05)
15	FDBB02-15F0S3XXXXXK	0.971(24.66)	1.311(33.31)	1.540(39.11)	1.029(26.14)	0.918(23.32)
25	FDBB02-25F0S3XXXXXK	1.511(38.38)	1.852(47.04)	2.088(53.04)	1.616(41.05)	1.526(38.75)
37	FDBB02-37F0S3XXXXXK	2.158(54.80)	2.500(63.50)	2.738(69.55)	2.226(56.54)	2.105(53.47)



Ordering Information

FDB B 02 - XX FO S 3 XX XX K  
 1 2 3 4 5 6 7 8 9 10

SPECIFICATIONS

- Electrical**
- Current Rating: 3A AC(rms)/DC
  - Voltage Rating: 250V AC(rms)/DC
  - Contact Resistance: 25 mΩ Max
  - Insulation Resistance: 1000 MΩ MIN
  - Withstanding Voltage: 500V AC r.m.s
  - Temperature Range-Operating: -55°C~+105°C
- Material and Finish**
- Housing: PBT UL 94V-0
  - Contact: Copper Alloy/Gold Flash Plated On Contact Area Tin Plated On Soldertails, Nickel Under Plated Over All/Gold Plated Options
  - Shell: Spcc/Nickel Plated Over All
  - Screws: Copper Alloy/Nickel Plated Over All

1	Category FDB- D-SUB	2	Assembly Layout B-Bump	3	Distinction No. 02	4	Circuits 09,15,25,37	5	Type FO-Female
6	Entry Angle S-Vertical	7	Plating 3-Half Gold/Tin	8	Thickness of Gold Plating 00-Gold Flash 03-3u" ..... Custom Plate Available	9	Color-Resin K6-Black U1-Blue	10	Packaging K-PE Tray

<p>THIRD ANGLE PROJECTION</p>	GENERAL TOLERANCES (UNLESS SPECIFIED)		APPROVE BY FRANK	DATE 28/JUN/13	PART NO. FDBB02-XXF0S3XXXXXK	ITEM NO. FDBB02	<p>Leader Of Industry</p>	
	X.±.012(0.30)	X.±5'	CHECKED BY JACOB	DATE 28/JUN/13	TITLE D-SUB FEMALE BUMP TYPE CONN	REV 1		SHEET NO. 1/1
	X.XX±.008(0.20)	.X'±2'	DRAWN BY CHERRY	DATE 28/JUN/13	THIS DRAWING CONTAINS INFORMATION THAT IS PROPRIETARY TO TXGA INDUSTRIAL ELECTRONICS(S.Z)CO.,LTD AND SHOULD NOT BE USED WITHOUT WRITTEN PERMISSION			
	X.XX±.006(0.15)	.XX±1'						