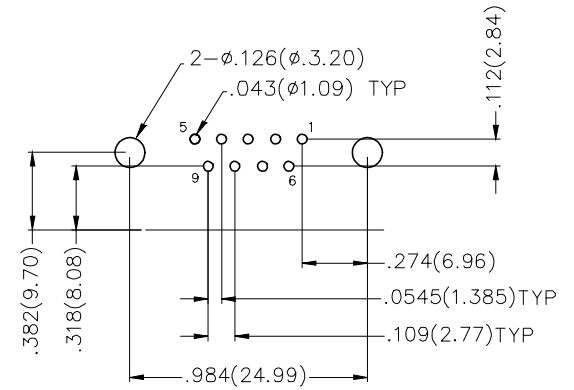
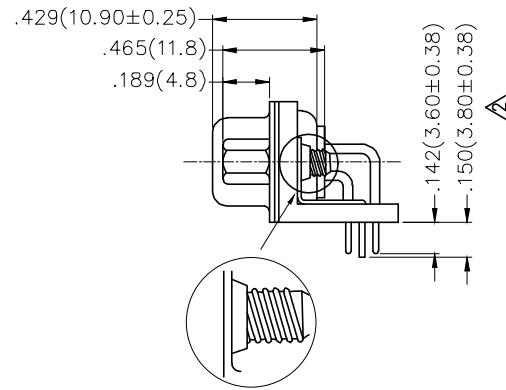
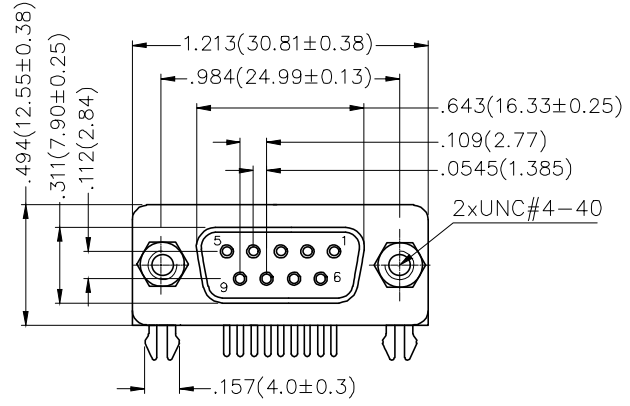
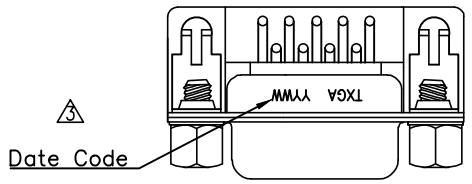
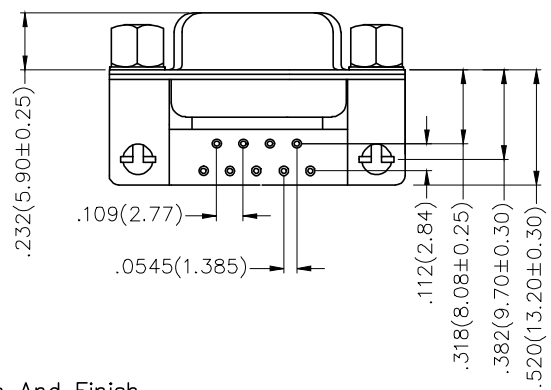


REV	LOCATIONS	DESCRIPTION	DATE	REVISER	APPD
1		Size 3.30 Change to 3.8±0.35	04/AUG/20	CHERRY	KATE
2		Size: Change 4.20/3.80 into 3.80/3.60	26/SEP/21	KATE	FRANK
3		Add marking code	13/Jan/25	NICK	LEO



Recommended P.C.Board Layout



**Materials And Finish**  
 Shell: Spcc Material, Front Nickel Plated 80μ" Min  
 Back Shell Tin Plated 100μ" Min  
 Insulator: Glass Filled Thermoplastic, UL 94V-0  
 Contact Material: Brass /Gold Plated  
**Electrical Characteristic**  
 Current Rating: 7.5A  
 Voltage Rating: 300V  
 Contact Resistance: 5mΩ Max  
 Dielectric Withstanding Voltage :1000V AC r.m.s  
 Insulation Resistance: 5000 MΩ Min.  
 Temperature Range-Operating: -55°C ~ +105°C

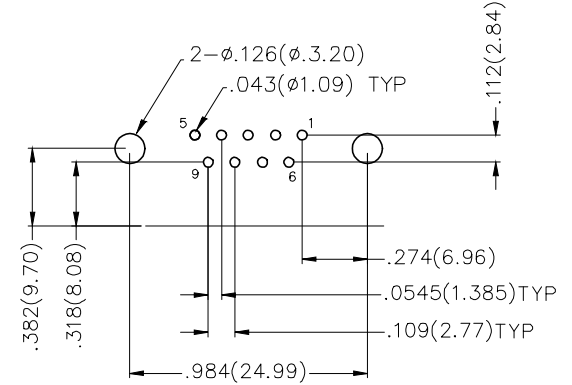
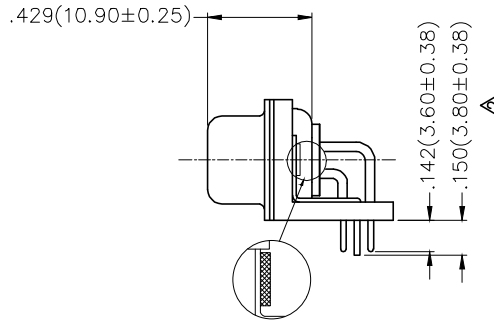
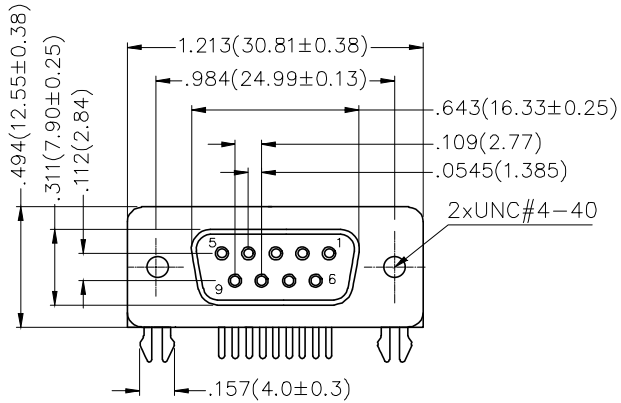
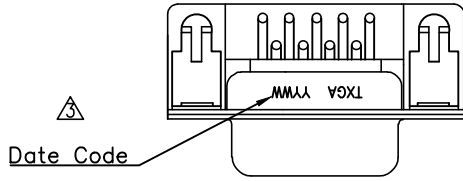
Ordering Information

FDM 09 01 - F0 D B 1 XX XX X  
 1 2 3 4 5 6 7 8 9 10

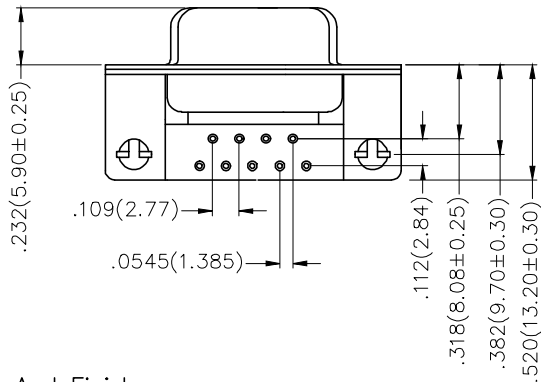
1	Category FDM-Machined pin D-SUB connector	2	Circuits 09	3	Distinction No. 01	4	Type F0-Female	5	Assembly Layout D-DIP	6	Entry Angle B-90° Angle
7	Plating 1-Gold Plated	8	Thickness of Plating 01-1μ" 03-3μ" Custom plate available	9	Color-Resin W1-White K6-Black	10	Packaging K-Tray L-Tube				

	GENERAL TOLERANCES (UNLESS SPECIFIED)		APPROVE BY FRANK	DATE 28/JUN/13	PART NO. FDM0901-F0DB1XXXXX	ITEM NO. FDM0901	
	DESIGN UNITS Inch (metric)	X.±.012(0.30) X.X±.008(0.20) X.XX±.006(0.15) X.XXX±.004(0.10)	X.±5' .X'±2' .XX'±1" .XXX'±0.5"	CHECKED BY JACOB	DATE 28/JUN/13	TITLE Machined pin D-SUB connector 90° Angle Female	
SCALE 5:1	SIZE A4	DRAWN BY CHERRY		DATE 28/JUN/13	THIS DRAWING CONTAINS INFORMATION THAT IS PROPRIETARY TO TXGA INDUSTRIAL ELECTRONICS(S.Z)CO.,LTD AND SHOULD NOT BE USED WITHOUT WRITTEN PERMISSION		

REV	LOCATIONS	DESCRIPTION	DATE	REVISER	APPD
1		Size 3.30 Change to 3.8±0.35	04/AUG/20	CHERRY	KATE
2		Size: Change 4.20/3.80 into 3.80/3.60	26/SEP/21	KATE	FRANK
3		Add marking code	13/Jan/25	NICK	LEO



Recommended P.C.Board Layout



Materials And Finish  
 Shell: Spcc Material, Front Nickel Plated 80μ" Min  
 Back Shell Tin Plated 100μ" Min  
 Insulator: Glass Filled Thermoplastic, UL 94V-0  
 Contact Material: Brass /Gold Plated  
 Electrical Characteristic  
 Current Rating: 7.5A  
 Voltage Rating: 300V  
 Contact Resistance: 5mΩ Max  
 Dielectric Withstanding Voltage :1000V AC r.m.s  
 Insulation Resistance: 5000 MΩ Min.  
 Temperature Range-Operating: -55°C ~ +105°C

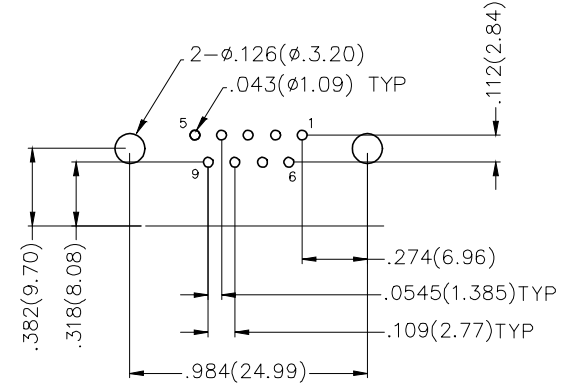
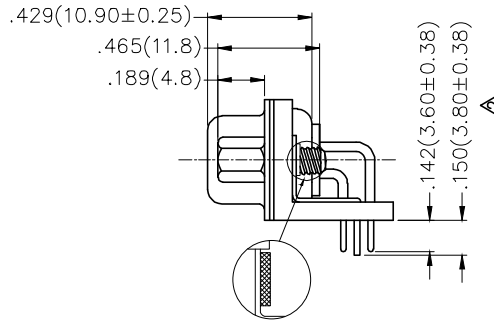
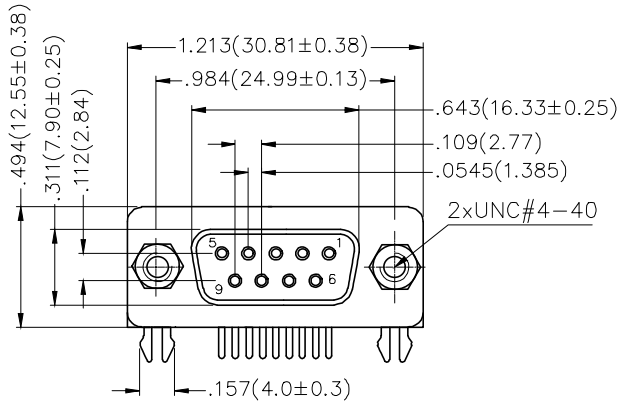
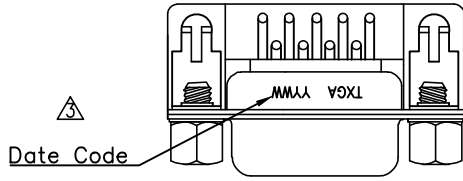
Ordering Information

FDM 09 01 - F0 D B 1 XX XX X B  
 1 2 3 4 5 6 7 8 9 10 11

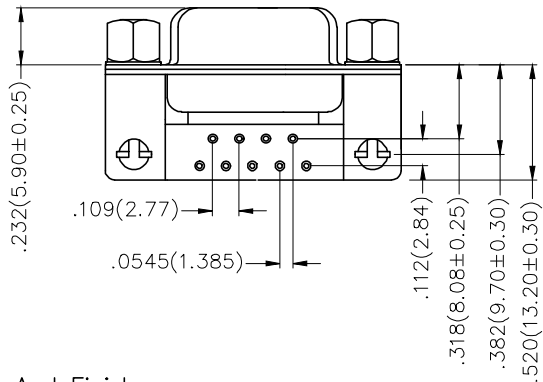
1	Category FDM-Machined pin D-SUB connector	2	Circuits 09	3	Distinction No. 01	4	Type F0-Female	5	Assembly Layout D-DIP	6	Entry Angle B-90° Angle
7	Plating 1-Gold Plated	8	Thickness of Plating 01-1μ" 03-3μ" Custom plate available	9	Color-Resin W1-White K6-Black	10	Packaging K-Tray L-Tube	11	Distinction Type B-B Type		

	GENERAL TOLERANCES (UNLESS SPECIFIED)		APPROVE BY FRANK	DATE 28/JUN/13	PART NO. FDM0901-F0DB1XXXXXB	ITEM NO. FDM0901		
	DESIGN UNITS Inch (metric)	X.±.012(0.30) X.X±.008(0.20) X.XX±.006(0.15) X.XXX±.004(0.10)	X.±5' .X'±2' .XX'±1" .XXX'±0.5"	CHECKED BY JACOB	DATE 28/JUN/13	TITLE Machined pin D-SUB connector 90° Angle Female		REV 3
SCALE 5:1	SIZE A4		DRAWN BY CHERRY	DATE 28/JUN/13	THIS DRAWING CONTAINS INFORMATION THAT IS PROPRIETARY TO TXGA INDUSTRIAL ELECTRONICS(S.Z)CO.,LTD AND SHOULD NOT BE USED WITHOUT WRITTEN PERMISSION			

REV	LOCATIONS	DESCRIPTION	DATE	REVISER	APPD
1		Size 3.30 Change to 3.8±0.35	04/AUG/20	CHERRY	KATE
2		Size: Change 4.20/3.80 into 3.80/3.60	26/SEP/21	KATE	FRANK
3		Add marking code	13/Jan/25	NICK	LEO



Recommended P.C.Board Layout



**Materials And Finish**

Shell: Spcc Material, Front Nickel Plated 80μ" Min  
 Back Shell Tin Plated 100μ" Min  
 Insulator: Glass Filled Thermoplastic, UL 94V-0  
 Contact Material: Brass /Gold Plated  
 Electrical Characteristic  
 Current Rating: 7.5A  
 Voltage Rating: 300V  
 Contact Resistance: 5mΩ Max  
 Dielectric Withstanding Voltage :1000V AC r.m.s  
 Insulation Resistance: 5000 MΩ Min.  
 Temperature Range-Operating: -55°C ~ +105°C

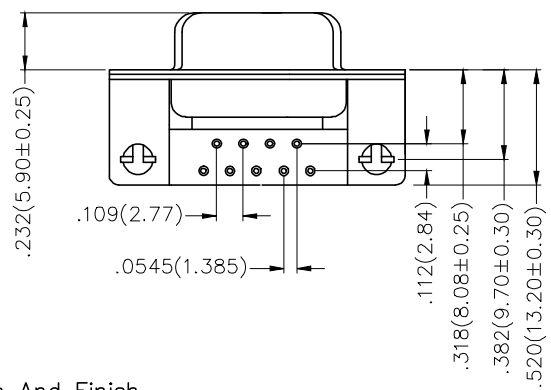
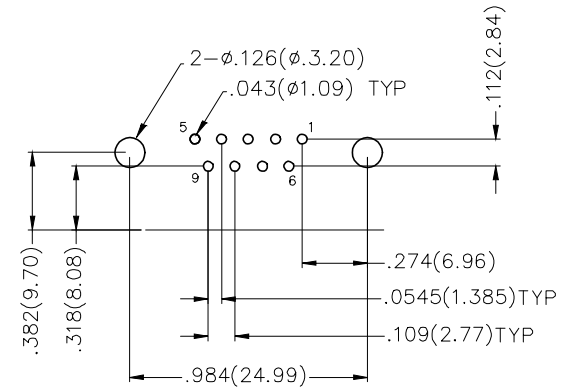
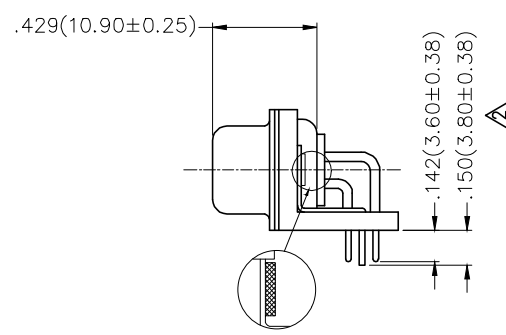
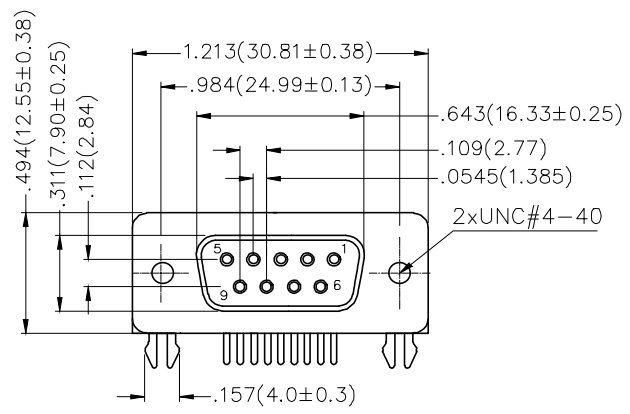
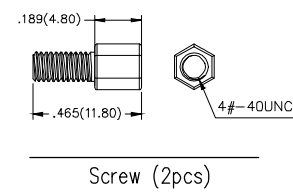
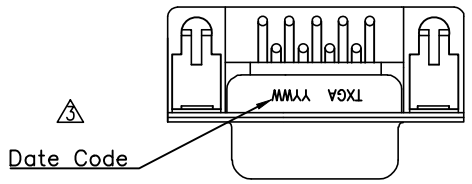
**Ordering Information**

FDM 09 01 - F0 D B 1 XX XX X C  
 1 2 3 4 5 6 7 8 9 10 11

1	Category FDM-Machined pin D-SUB connector	2	Circuits 09	3	Distinction No. 01	4	Type F0-Female	5	Assembly Layout D-DIP	6	Entry Angle B-90° Angle
7	Plating 1-Gold Plated	8	Thickness of Plating 01-1μ" 03-3μ" Custom plate available	9	Color-Resin W1-White K6-Black	10	Packaging K-Tray L-Tube	11	Distinction Type C-C Type		

	GENERAL TOLERANCES (UNLESS SPECIFIED)		APPROVE BY FRANK	DATE 28/JUN/13	PART NO. FDM0901-F0DB1XXXXXC	ITEM NO. FDM0901		
	DESIGN UNITS Inch (metric)	X.±.012(0.30) X.X±.008(0.20) X.XX±.006(0.15) X.XXX±.004(0.10)	X.±5" .X'±2" .XX'±1" .XXX'±0.5"	CHECKED BY JACOB	DATE 28/JUN/13	TITLE Machined pin D-SUB connector 90° Angle Female		REV 3
SCALE 5:1	SIZE A4		DRAWN BY CHERRY	DATE 28/JUN/13	THIS DRAWING CONTAINS INFORMATION THAT IS PROPRIETARY TO TXGA INDUSTRIAL ELECTRONICS(S.Z)CO.,LTD AND SHOULD NOT BE USED WITHOUT WRITTEN PERMISSION			

REV	LOCATIONS	DESCRIPTION	DATE	REVISER	APPD
1		Size 3.30 Change to 3.8±0.35	04/AUG/20	CHERRY	KATE
2		Size: Change 4.20/3.80 into 3.80/3.60	26/SEP/21	KATE	FRANK
3		Add marking code	13/Jan/25	NICK	LEO



### Ordering Information

FDM 09 01 - F0 D B 1 XX XX X D  
 1 2 3 4 5 6 7 8 9 10 11

1	Category FDM-Machined pin D-SUB connector	2	Circuits 09	3	Distinction No. 01	4	Type F0-Female	5	Assembly Layout D-DIP	6	Entry Angle B-90° Angle
7	Plating 1-Gold Plated	8	Thickness of Plating 01-1μ" 03-3μ" Custom plate available	9	Color-Resin W1-White K6-Black	10	Packaging K-Tray L-Tube	11	Distinction Type D-D Type		

**Materials And Finish**  
 Shell: Spcc Material, Front Nickel Plated 80μ" Min  
 Back Shell Tin Plated 100μ" Min  
 Insulator: Glass Filled Thermoplastic, UL 94V-0  
 Contact Material: Brass /Gold Plated  
**Electrical Characteristic**  
 Current Rating: 7.5A  
 Voltage Rating: 300V  
 Contact Resistance: 5mΩ Max  
 Dielectric Withstanding Voltage :1000V AC r.m.s  
 Insulation Resistance: 5000 MΩ Min.  
 Temperature Range-Operating: -55°C ~ +105°C

	GENERAL TOLERANCES (UNLESS SPECIFIED)		APPROVE BY FRANK	DATE 28/JUN/13	PART NO. FDM0901-F0DB1XXXXXD	ITEM NO. FDM0901	
	DESIGN UNITS Inch (metric)	X.±.012(0.30) X.X±.008(0.20) X.XX±.006(0.15) X.XXX±.004(0.10)	X.±5° .X'±2° .XX'±1° .XXX'±0.5°	CHECKED BY JACOB	DATE 28/JUN/13	TITLE Machined pin D-SUB connector 90° Angle Female	
SCALE 5:1	SIZE A4	DRAWN BY CHERRY		DATE 28/JUN/13	THIS DRAWING CONTAINS INFORMATION THAT IS PROPRIETARY TO TXGA INDUSTRIAL ELECTRONICS(S.Z)CO.,LTD AND SHOULD NOT BE USED WITHOUT WRITTEN PERMISSION		