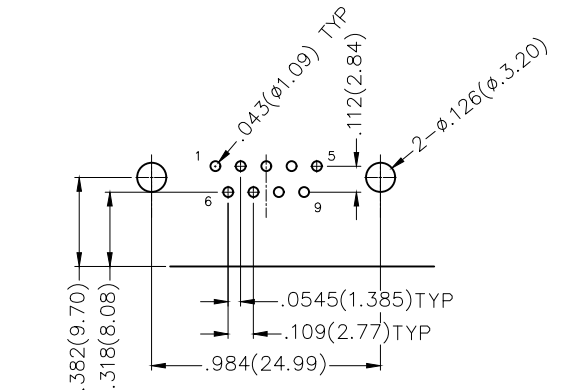
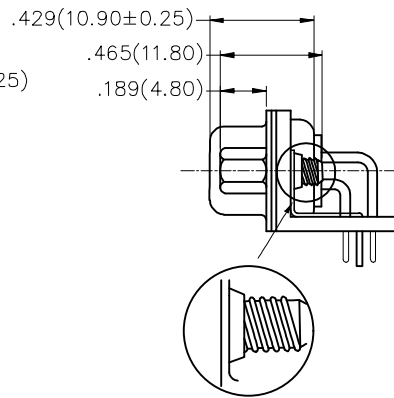
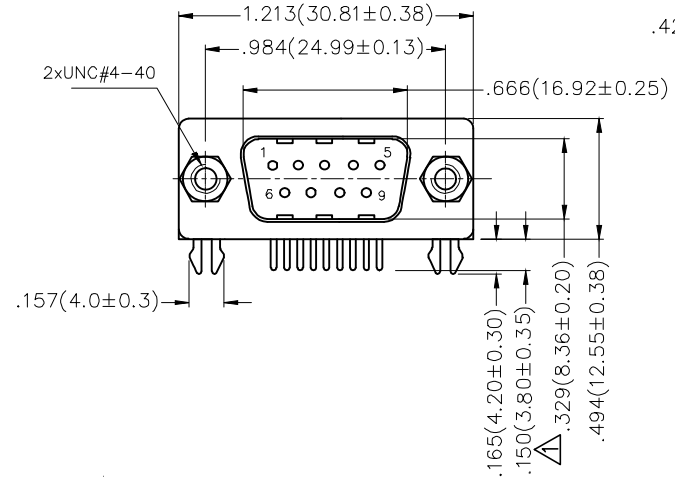
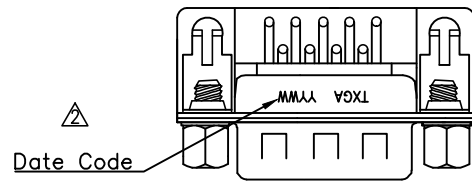
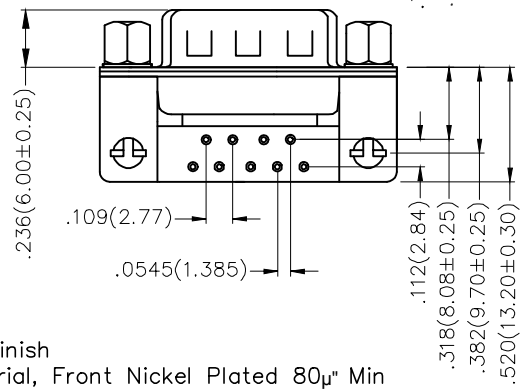


REV	LOCATIONS	DESCRIPTION	DATE	REVISER	APPD
1		Size 3.30 Change to 3.8±0.35	04/AUG/20	CHERRY	KATE
2		Add marking code	13/Jan/25	NICK	LEO



Recommended P.C.Board Layout



Materials And Finish
 Shell: Spcc Material, Front Nickel Plated 80µ" Min
 Back Shell: SPCC, Tin Plated 100µ" Min
 Insulator: Glass Filled Thermoplastic, UL 94V-0
 Contact Material: Brass /Gold Plated
Electrical Characteristic
 Current Rating: 7.5A
 Voltage Rating: 300V
 Contact Resistance: 5mΩ Max
 Dielectric Withstanding Voltage :1000V AC r.m.s
 Insulation Resistance: 5000 MΩ Min.
 Temperature Range-Operating: -55°C ~ +105°C

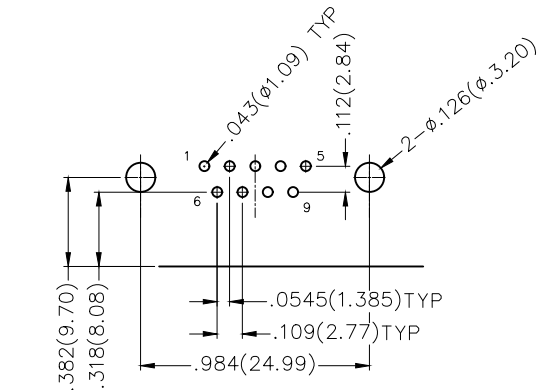
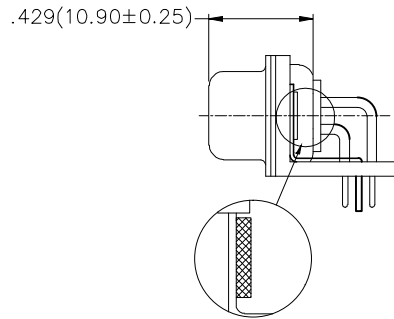
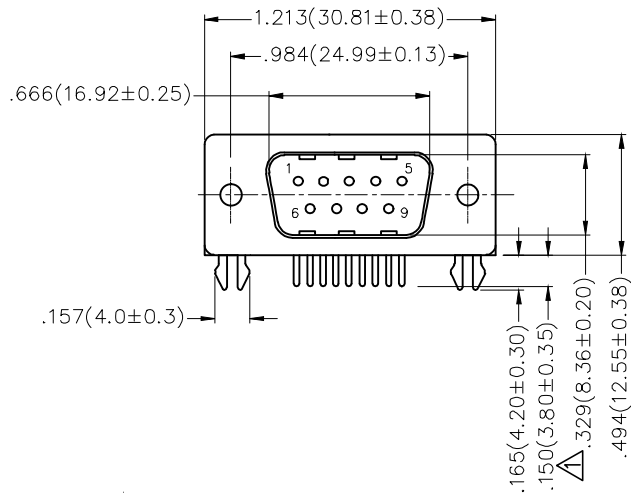
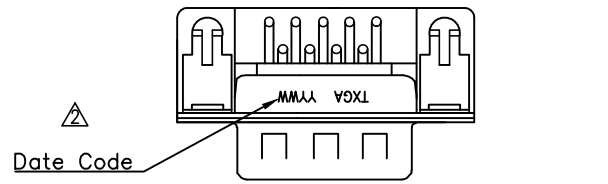
Ordering Information

FDM 09 01 — MO D B 1 XX XX K
 1 2 3 4 5 6 7 8 9 10

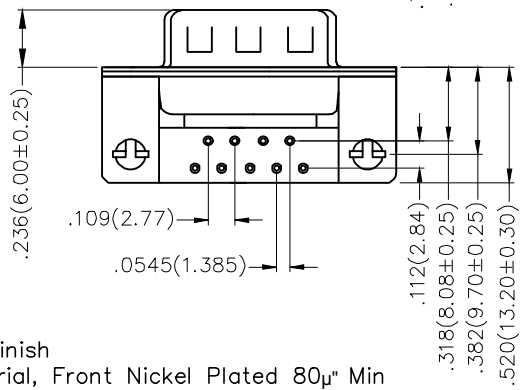
1	Category FDM-Machined pin D-SUB connector	2	Circuits 09	3	Distinction No. 01	4	Type MO-Male	5	Assembly Layout D-DIP	6	Entry Angle B-90° Angle
7	Plating 1-Gold Plated	8	Thickness of Plating 01-1µ" 03-3µ" Custom plate available	9	Color-Resin W1-White K6-Black	10	Packaging K-Tray				

	GENERAL TOLERANCES (UNLESS SPECIFIED)		APPROVE BY FRANK	DATE 28/JUN/13	PART NO. FDM0901-M0DB1XXXXX	ITEM NO. FDM0901			
	DESIGN UNITS Inch (metric)	X.±.012(0.30) X.X±.008(0.20) X.XX±.006(0.15) X.XXX±.004(0.10)	X.±5" .X'±2" .XX'±1" .XXX'±0.5"	CHECKED BY JACOB	DATE 28/JUN/13	TITLE Machined pin D-SUB connector 90° Angle Male		Building Technology Cornerstone	
SCALE 5:1	SIZE A4		DRAWN BY CHERRY	DATE 28/JUN/13	THIS DRAWING CONTAINS INFORMATION THAT IS PROPRIETARY TO TXGA INDUSTRIAL ELECTRONICS(S.Z)CO.,LTD AND SHOULD NOT BE USED WITHOUT WRITTEN PERMISSION			REV 2	SHEET NO. 1/1

REV	LOCATIONS	DESCRIPTION	DATE	REVISER	APPD
1	▲	Size 3.30 Change to 3.8±0.35	04/AUG/20	CHERRY	KATE
2	▲	Add marking code	13/Jan/25	NICK	LEO



Recommended P.C.Board Layout



Materials And Finish
 Shell: Spcc Material, Front Nickel Plated 80µ" Min
 Back Shell: SPCC, Tin Plated 100µ" Min
 Insulator: Glass Filled Thermoplastic, UL 94V-0
 Contact Material: Brass /Gold Plated
Electrical Characteristic
 Current Rating: 7.5A
 Voltage Rating: 300V
 Contact Resistance: 5mΩ Max
 Dielectric Withstanding Voltage :1000V AC r.m.s
 Insulation Resistance: 5000 MΩ Min.
 Temperature Range—Operating: -55°C ~ +105°C

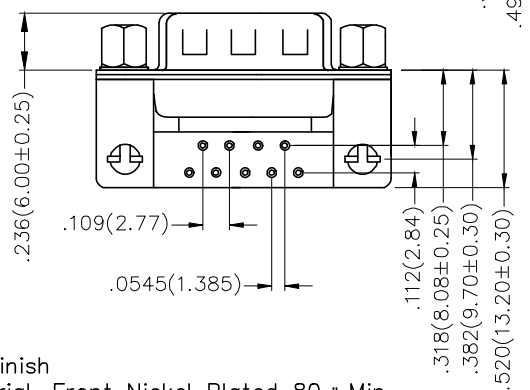
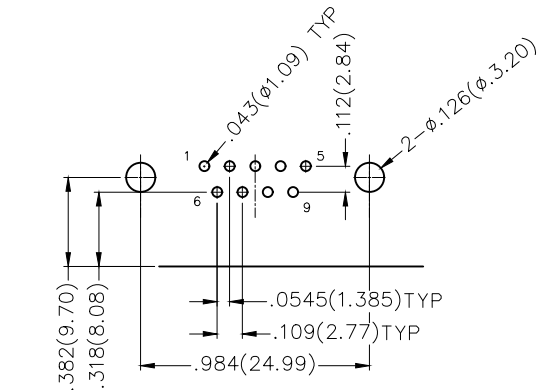
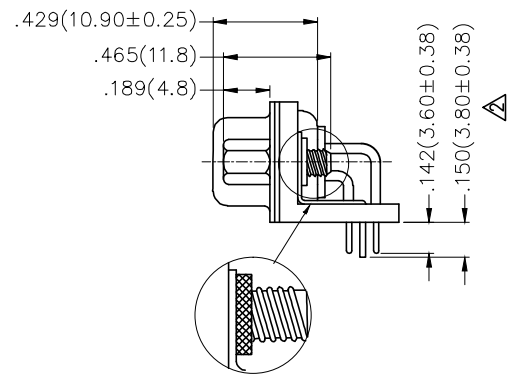
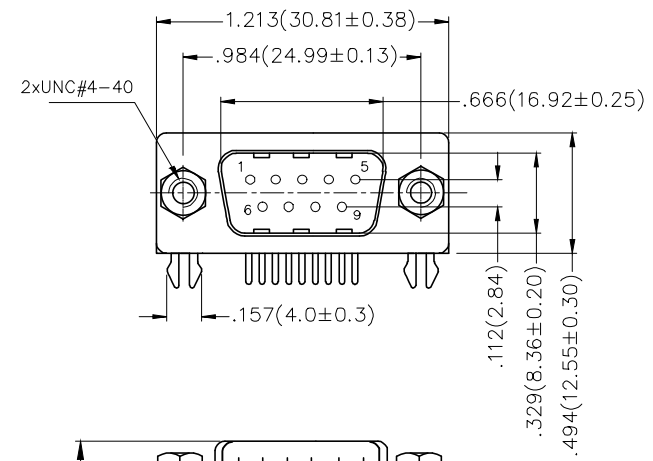
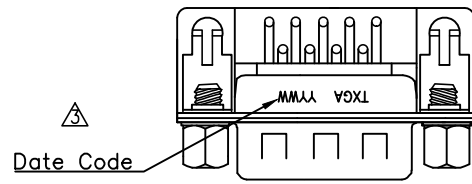
Ordering Information

FDM 09 01 — MO D B 1 XX XX K B
 1 2 3 4 5 6 7 8 9 10 11

1	Category	FDM—Machined pin D—SUB connector	2	Circuits	09	3	Distinction No.	01	4	Type	MO—Male	5	Assembly Layout	D—DIP	6	Entry Angle	B—90° Angle
7	Plating	1—Gold Plated	8	Thickness of Plating	01—1µ" 03—3µ" Custom plate available	9	Color—Resin	W1—White K6—Black	10	Packaging	K—Tray	11	Distinction Type	B—B Type			

 THIRD ANGLE PROJECTION	GENERAL TOLERANCES (UNLESS SPECIFIED)		APPROVE BY	DATE	PART NO.	ITEM NO.	 Building Technology Cornerstone
	X.±.012(0.30)	X.±5'	FRANK	28/JUN/13	FDM0901—MODB1XXXXKB	FDM0901	
DESIGN UNITS Inch (metric)	X.X±.008(0.20)	.X'±2'	CHECKED BY	DATE	TITLE		Building Technology Cornerstone REV 2 SHEET NO. 1/1
SCALE 5:1	X.XX±.006(0.15)	.XX'±1'	JACOB	28/JUN/13	Machined pin D—SUB connector 90° Angle Male		
	X.XXX±.004(0.10)	.XXX'±0.5'	DRAWN BY	DATE	THIS DRAWING CONTAINS INFORMATION THAT IS PROPRIETARY TO TXGA INDUSTRIAL ELECTRONICS(S.Z)CO.,LTD AND SHOULD NOT BE USED WITHOUT WRITTEN PERMISSION		
			CHERRY	28/JUN/13			

REV	LOCATIONS	DESCRIPTION	DATE	REVISER	APPD
1		Size 3.30 Change to 3.8±0.35	04/AUG/20	CHERRY	KATE
2		Size: Change 4.20/3.80 into 3.80/3.60	26/SEP/21	KATE	FRANK
2		Add marking code	13/Jan/25	NICK	LEO



Materials And Finish
 Shell: Spcc Material, Front Nickel Plated 80µ" Min
 Back Shell: SPCC, Tin Plated 100µ" Min
 Insulator: Glass Filled Thermoplastic, UL 94V-0
 Contact Material: Brass /Gold Plated
Electrical Characteristic
 Current Rating: 7.5A
 Voltage Rating: 300V
 Contact Resistance: 5mΩ Max
 Dielectric Withstanding Voltage :1000V AC r.m.s
 Insulation Resistance: 5000 MΩ Min.
 Temperature Range-Operating: -55°C ~ +105°C

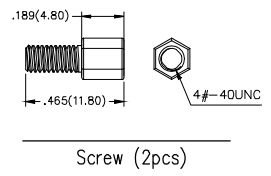
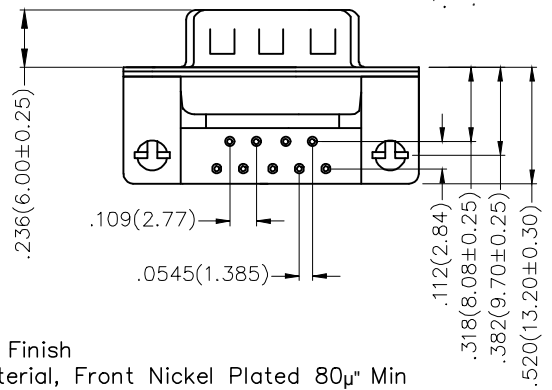
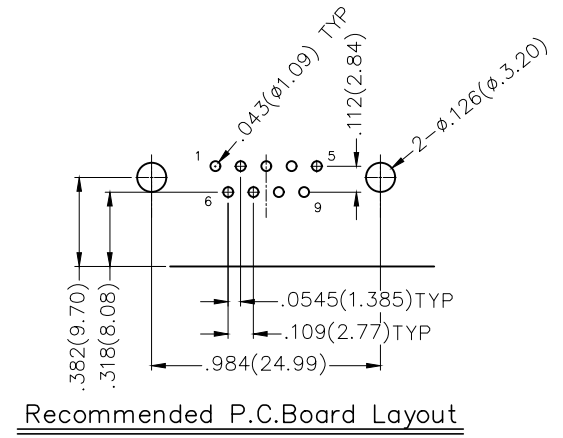
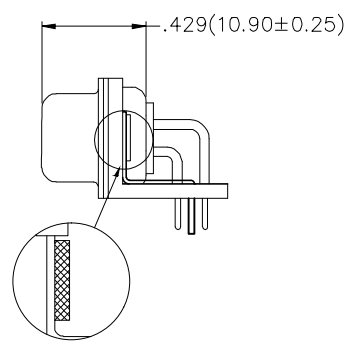
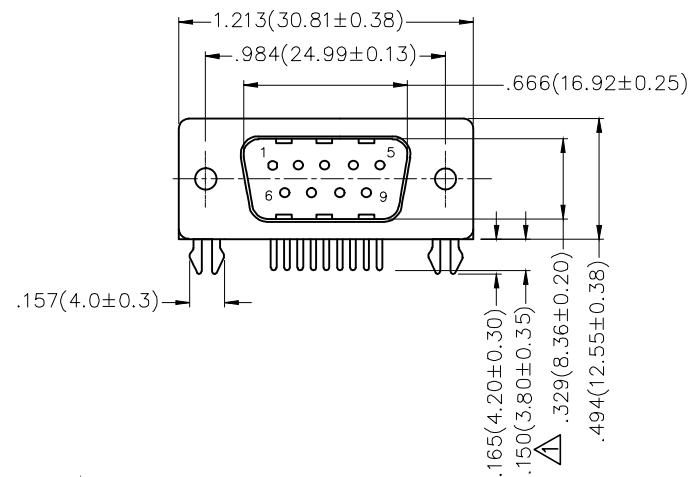
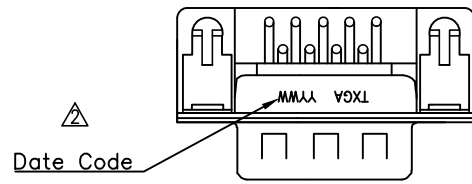
Ordering Information

FDM 09 01 — MO D B 1 XX XX K C
 1 2 3 4 5 6 7 8 9 10 11

1	Category	2	Circuits	3	Distinction No.	4	Type	5	Assembly Layout	6	Entry Angle
	FDM-Machined pin D-SUB connector		09		01		MO-Male		D-DIP		B-90° Angle
7	Plating	8	Thickness of Plating	9	Color-Resin	10	Packaging	11	Distinction Type		
	1-Gold Plated		01-1µ" 03-3µ" Custom plate available		W1-White K6-Black		K-Tray		C-C Type		

	GENERAL TOLERANCES (UNLESS SPECIFIED)		APPROVE BY	DATE	PART NO.	ITEM NO.	
	X.±.012(0.30)	X.±5'	FRANK	28/JUN/13	FDM0901-M0DB1XXXXKC	FDM0901	
DESIGN UNITS Inch (metric)	X.X±.008(0.20)	.X'±2'	CHECKED BY	DATE	TITLE	Building Technology Cornerstone	
SCALE	X.XX±.006(0.15)	.XX'±1'	JACOB	28/JUN/13	Machined pin D-SUB connector 90° Angle Male	REV 3	SHEET NO. 1/1
5:1	X.XXX±.004(0.10)	.XXX'±0.5'	DRAWN BY	DATE	THIS DRAWING CONTAINS INFORMATION THAT IS PROPRIETARY TO TXGA INDUSTRIAL ELECTRONICS(S.Z)CO.,LTD AND SHOULD NOT BE USED WITHOUT WRITTEN PERMISSION		
A4			CHERRY	28/JUN/13			

REV	LOCATIONS	DESCRIPTION	DATE	REVISER	APPD
1	△	Size 3.30 Change to 3.8±0.35	04/AUG/20	CHERRY	KATE
2	△	Add marking code	13/Jan/25	NICK	LEO



Ordering Information

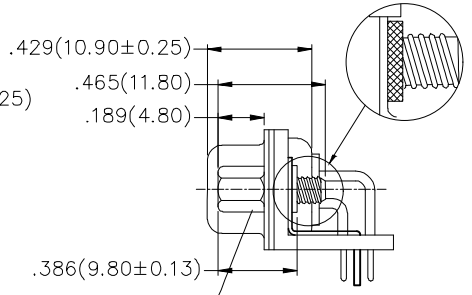
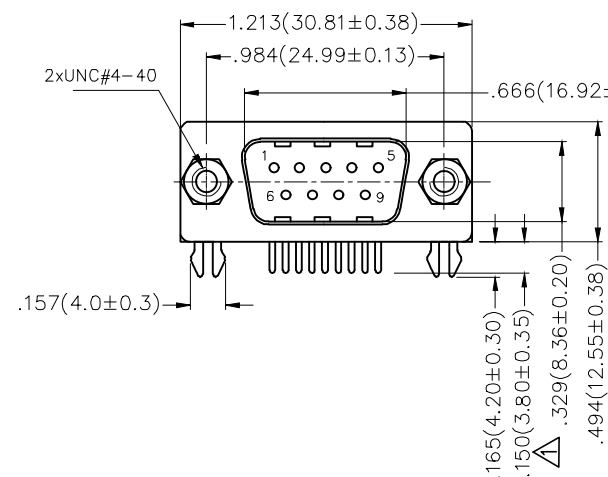
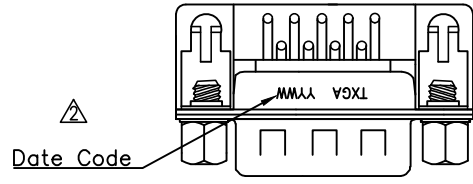
FDM 09 01 — MO D B 1 XX XX K D
 1 2 3 4 5 6 7 8 9 10 11

1	Category	2	Circuits	3	Distinction No.	4	Type	5	Assembly Layout	6	Entry Angle
	FDM—Machined pin D—SUB connector		09		01		MO—Male		D—DIP		B—90° Angle
7	Plating	8	Thickness of Plating	9	Color—Resin	10	Packaging	11	Distinction Type		
	1—Gold Plated		01—1µ" 03—3µ" Custom plate available		W1—White K6—Black		K—Tray		D—D Type		

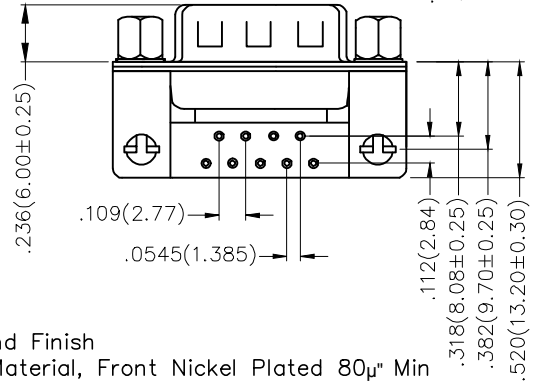
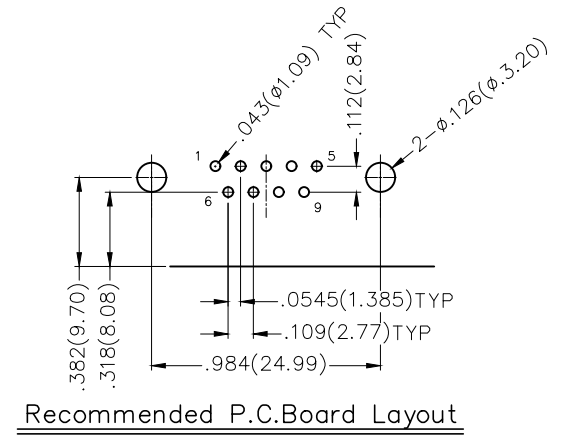
Materials And Finish
 Shell: Spcc Material, Front Nickel Plated 80µ" Min
 Back Shell: SPCC, Tin Plated 100µ" Min
 Insulator: Glass Filled Thermoplastic, UL 94V-0
 Contact Material: Brass /Gold Plated
Electrical Characteristic
 Current Rating: 7.5A
 Voltage Rating: 300V
 Contact Resistance: 5mΩ Max
 Dielectric Withstanding Voltage :1000V AC r.m.s
 Insulation Resistance: 5000 MΩ Min.
 Temperature Range—Operating: -55°C ~ +105°C

THIRD ANGLE PROJECTION	GENERAL TOLERANCES (UNLESS SPECIFIED)		APPROVE BY	DATE	PART NO.	ITEM NO.	 Building Technology Cornerstone
	X.±.012(0.30)	X.±5'	FRANK	28/JUN/13	FDM0901—MODB1XXXXKD	FDM0901	
DESIGN UNITS Inch (metric)	X.X±.008(0.20)	.X'±2'	CHECKED BY	DATE	TITLE		REV 2 SHEET NO. 1/1
SCALE 5:1	X.XX±.006(0.15)	.XX'±1'	JACOB	28/JUN/13	Machined pin D—SUB connector 90° Angle Male		
SIZE A4	X.XXX±.004(0.10)	.XXX'±0.5'	DRAWN BY	DATE	THIS DRAWING CONTAINS INFORMATION THAT IS PROPRIETARY TO TXGA INDUSTRIAL ELECTRONICS(S.Z)CO.,LTD AND SHOULD NOT BE USED WITHOUT WRITTEN PERMISSION		
			CHERRY	28/JUN/13			

REV	LOCATIONS	DESCRIPTION	DATE	REVISER	APPD
1	▲	Size 3.30 Change to 3.8±0.35	04/AUG/20	CHERRY	KATE
2	▲	Add marking code	13/Jan/25	NICK	LEO



* Notes:
Screws (Part No.: R-6AB-01A)
Salt spray: 48H
Torque force: 6kgf



Materials And Finish
 Shell: Spcc Material, Front Nickel Plated 80µ" Min
 Back Shell: SPCC, Tin Plated 100µ" Min
 Insulator: Glass Filled Thermoplastic, UL 94V-0
 Contact Material: Brass /Gold Plated
Electrical Characteristic
 Current Rating: 7.5A
 Voltage Rating: 300V
 Contact Resistance: 5mΩ Max
 Dielectric Withstanding Voltage :1000V AC r.m.s
 Insulation Resistance: 5000 MΩ Min.
 Temperature Range-Operating: -55°C ~ +105°C

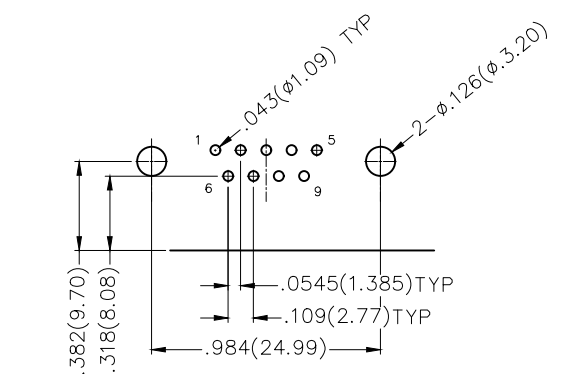
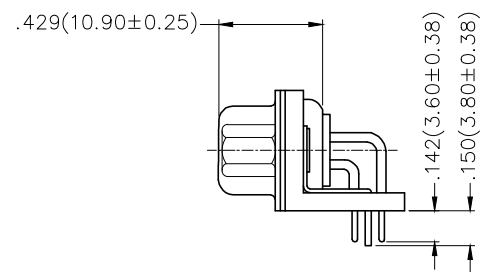
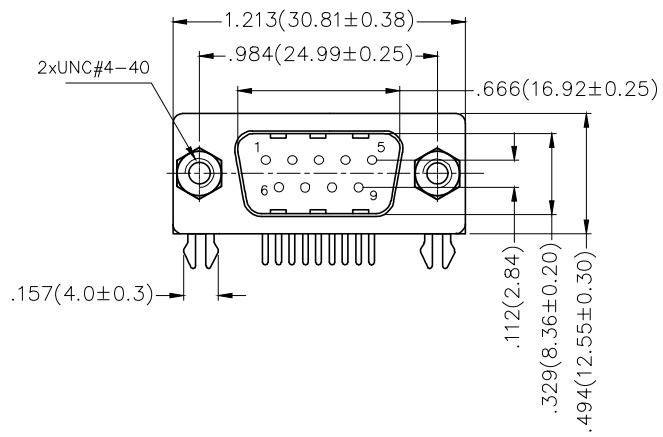
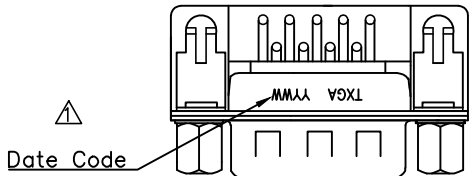
Ordering Information

FDM 09 01 — MO D B 1 XX XX K E
 1 2 3 4 5 6 7 8 9 10 11

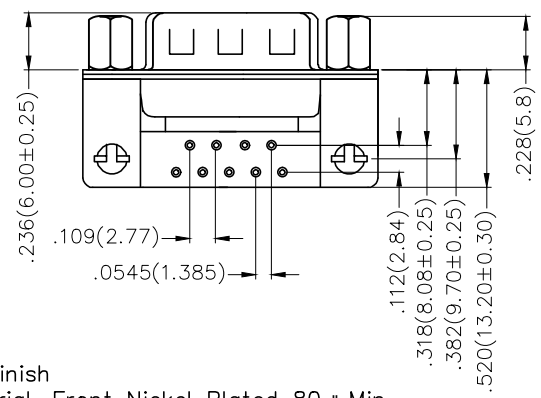
1	Category	2	Circuits	3	Distinction No.	4	Type	5	Assembly Layout	6	Entry Angle
	FDM-Machined pin D-SUB connector		09		01		MO-Male		D-DIP		B-90° Angle
7	Plating	8	Thickness of Plating	9	Color-Resin	10	Packaging	11	Distinction Type		
	1-Gold Plated		01-1µ" 03-3µ" Custom plate available		W1-White K6-Black		K-Tray		E-E Type		

THIRD ANGLE PROJECTION	GENERAL TOLERANCES (UNLESS SPECIFIED)		APPROVE BY	DATE	PART NO.	ITEM NO.	 Building Technology Cornerstone
	X.±.012(0.30)	X.±5'	FRANK	28/JUN/13	FDM0901-M0DB1XXXXKE	FDM0901	
DESIGN UNITS	X.X±.008(0.20)	.X'±2'	CHECKED BY	DATE	TITLE		REV 2 SHEET NO. 1/1
Inch (metric)	X.XX±.006(0.15)	.XX'±1'	JACOB	28/JUN/13	Machined pin D-SUB connector 90° Angle Male		
SCALE	X.XXX±.004(0.10)	.XXX'±0.5'	DRAWN BY	DATE	THIS DRAWING CONTAINS INFORMATION THAT IS PROPRIETARY TO TXGA INDUSTRIAL ELECTRONICS(S.Z)CO.,LTD AND SHOULD NOT BE USED WITHOUT WRITTEN PERMISSION		
5:1			CHERRY	28/JUN/13			

REV	LOCATIONS	DESCRIPTION	DATE	REVISER	APPD
1		Add marking code	13/Jan/25	NICK	LEO



Recommended P.C.Board Layout



Ordering Information

FDM 09 01 — MO D B 1 XX XX K F
 1 2 3 4 5 6 7 8 9 10 11

1 Category	2 Circuits	3 Distinction No.	4 Type	5 Assembly Layout	6 Entry Angle
FDM—Machined pin D—SUB connector	09	01	MO—Male	D—DIP	B—90° Angle
7 Plating	8 Thickness of Plating	9 Color—Resin	10 Packaging	11 Distinction Type	
1—Gold Plated	01—1μ" 03—3μ" Custom plate available	W1—White K6—Black	K—Tray	F—F Type	

Materials And Finish
 Shell: Spcc Material, Front Nickel Plated 80μ" Min
 Back Shell: SPCC, Tin Plated 100μ" Min
 Insulator: Glass Filled Thermoplastic, UL 94V-0
 Contact Material: Brass /Gold Plated
Electrical Characteristic
 Current Rating: 7.5A
 Voltage Rating: 300V
 Contact Resistance: 5mΩ Max
 Dielectric Withstanding Voltage :1000V AC r.m.s
 Insulation Resistance: 5000 MΩ Min.
 Temperature Range—Operating: -55°C ~ +105°C

	GENERAL TOLERANCES (UNLESS SPECIFIED)		APPROVE BY	DATE	PART NO.	ITEM NO.	
	X.±.012(0.30)	X.±5'	FRANK	01/DEC/23	FDM0901—MODB1XXXXKF	FDM0901	
DESIGN UNITS Inch (metric)	X.X±.008(0.20)	.X±2'	CHECKED BY	DATE	TITLE	Building Technology Cornerstone	
SCALE	X.XX±.006(0.15)	.XX±1'	JACOB	01/DEC/23	Machined pin D—SUB connector 90° Angle Male	REV 1	SHEET NO. 1/1
5:1	X.XXX±.004(0.10)	.XXX±0.5'	DRAWN BY	DATE	THIS DRAWING CONTAINS INFORMATION THAT IS PROPRIETARY TO TXGA INDUSTRIAL ELECTRONICS(S.Z)CO.,LTD AND SHOULD NOT BE USED WITHOUT WRITTEN PERMISSION		
A4			MATT	01/DEC/23			