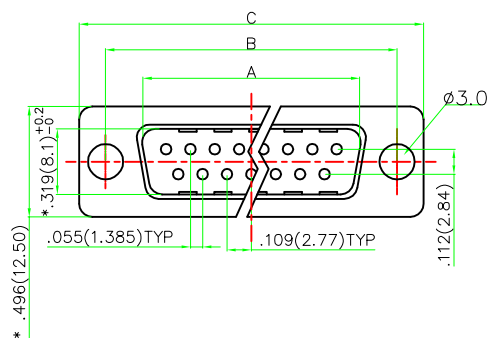


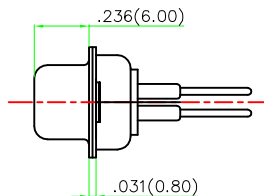
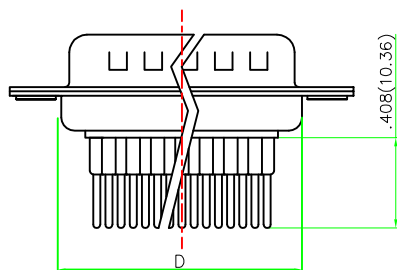
<http://www.txgagroup.com>  
[mail.sales@txgagroup.com](mailto:mail.sales@txgagroup.com)

REV	LOCATIONS	DESCRIPTION	DATE	REVISER	APPD

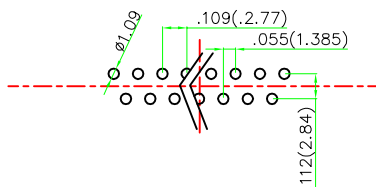


**MATERIALS AND FINISH**

SHELL : STEEL OR BRASS MATERIAL, Tin/Ni OR Au FINISHED  
 CONNECTOR INSULATOR : PBT THERMOPLASTIC, 30% GLASS FILLED, UL 94V-0 RATED  
 HIGH POWER CONTACT MATERIAL: PHOSPHOR BRONZE; 3U~50u" GOLD PLATED  
 ELECTRICAL CHARACTERISTICS  
 HIGH POWER CONTACT CURRENT RATING :10,20,30,OR 40 AMPS  
 HIGH POWER CONTACT RESISTANCE : 2.7 MILLIOHMS MAX.  
 DIELECTRIC WITHSTANDING VOLTAGE :1000 V AC FOR 1 MINUTE  
 INSULATION RESISTANCE : 5000 MEGAOHMS MIN.  
 TEMPERATURE RATING : -55°C ~ +125°C



	A±0.25	B±0.13	C±0.38	D±0.25
09P	.666(16.92)	.984(24.99)	1.213(30.81)	.759(19.28)
15P	.994(25.25)	1.312(33.32)	1.541(39.14)	1.083(27.51)
25P	1.534(38.96)	1.852(47.04)	2.088(53.04)	1.625(41.28)
37P	2.182(55.42)	2.500(63.50)	2.729(69.32)	2.272(57.71)



PCB LAYOUT

**Ordering Information**

FDM XX 08 — M0 D S 1 \*\* \*\* K  
 1 2 3 4 5 6 7 8 9 10

1	D-sub Connector Series Name Machined Pin Type-FDM	2	No. of pins -09,15,25,37	3	Distinction No. -05	4	Type Male-M0	5	Assembly Layout DIP-D
6	Entry Type Straight-S	7	Gold Plating Gold Plated All-1	8	Thickness of Plating 3u"-00 10u"-10..... Custom Plate Available	9	Plastic Colour Black-K6 White-W1	10	Packaging PE Tray-K

Third Angle Projection		TOLERANCE (Expect as noted)		APPROVE	Frank	PART NO:		TITLE:	ITEM NO:	TXGA
UNIT: in(mm)	X.±.012(0.30)	X.*±5°	CHECK	FAN	FDM**08-M0DS1****K		D-SUB Connector	DM**08-M0		
SCALE: 1:1	X.XX±.008(0.20)	.X*±2°	DRAWN	Cherry	DATE	13/JUN/11	REQUIRED DOCUMENTS: D-SUB Connector Machined Pin Type Male Series	REV: 0		