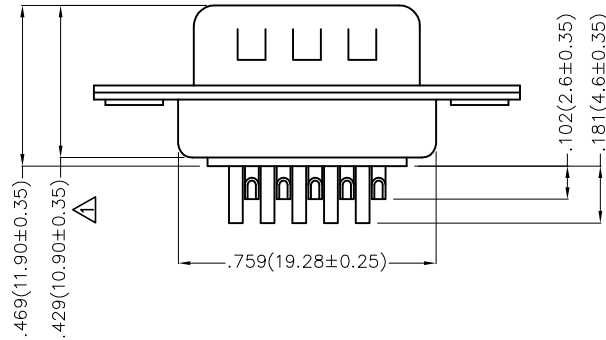
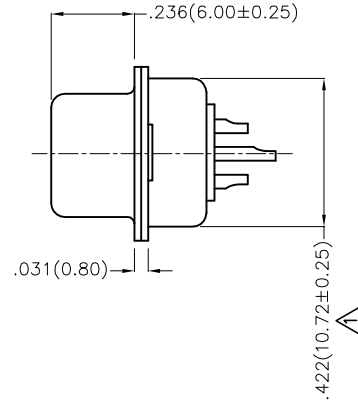
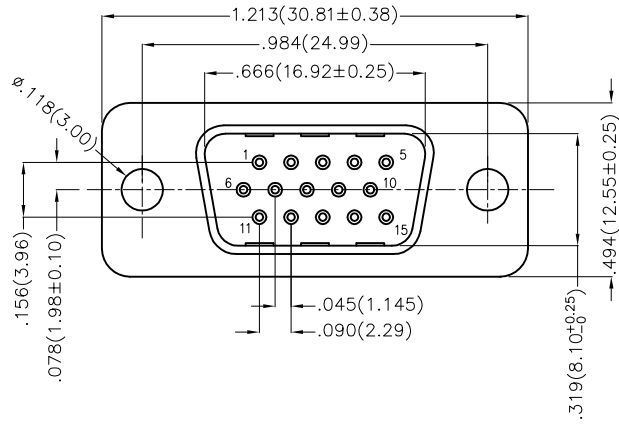


REV	LOCATIONS	DESCRIPTION	DATE	REVISER	APPD
1	△	Size changes	18/JUN/21	KATE	CHERRY




### Ordering Information

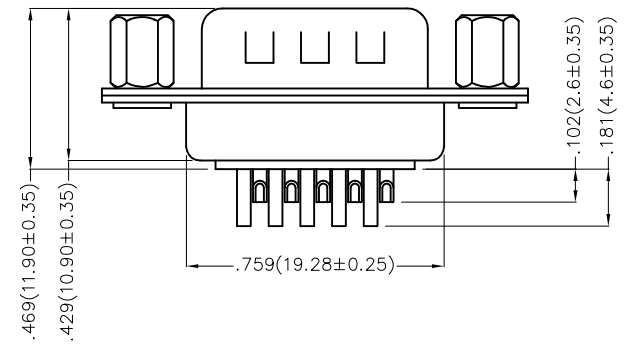
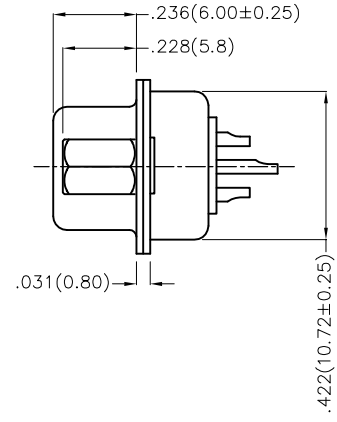
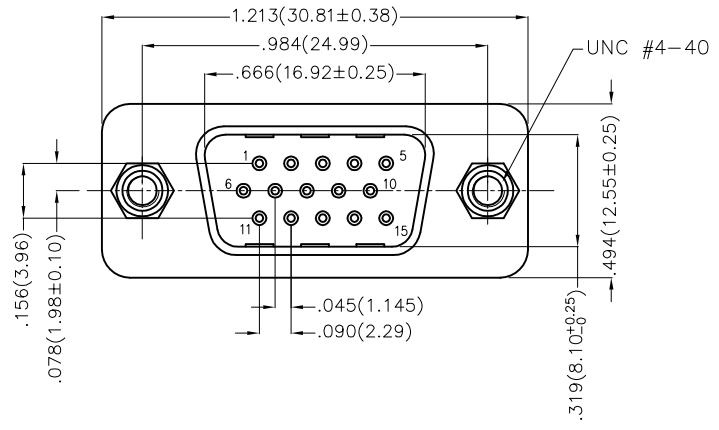
FDM 15 11 — MO W S 1 XX XX K  
 1 2 3 4 5 6 7 8 9 10

1   Category FDM—Machined pin D—SUB connector	2   Circuits 15	3   Distinction No. 11	4   Type MO—Male	5   Assembly Layout W—Welding Type
6   Entry Angle S—180° Vertical	7   Plating 1—Gold Plated	8   Thickness of Plating 01—1μ" 03—03μ" Custom plate available	9   Color—Resin W1—White K6—Black	10   Packaging K—Tray

Materials And Finish  
 Shell: Steel Material, Front Nickel Plated  
 Back Shell Tin Plated  
 Insulator: PBT Thermoplastic, UL 94V-0, Color: Black  
 Contact Material: Brass /Gold Plated  
 Electrical Characteristic  
 Contact Current Rating: 5.0A  
 Contact Resistance : 30 Milliohms Max  
 Dielectric Withstanding Voltage : 500V AC r.m.s Min  
 Insulation Resistance: 5000 Megaohms Min.  
 Temperature Range—Operating: -55°C ~ +105°C

THIRD ANGLE PROJECTION	GENERAL TOLERANCES (UNLESS SPECIFIED)		APPROVE BY FRANK	DATE 23/JUL/13	PART NO. FDM1511—MOWS1XXXXX	ITEM NO. FDM1511—MO	 Building Technology Cornerstone
	DESIGN UNITS Inch (metric)	X.±.012(0.30) X'±5'	CHECKED BY CHERRY	DATE 23/JUL/13	TITLE Machined pin D—SUB connector 180° Vertical Male		
SCALE 5:1	SIZE A4	X.XX±.006(0.15) .XX'±1'	DRAWN BY JACOB	DATE 23/JUL/13	THIS DRAWING CONTAINS INFORMATION THAT IS PROPRIETARY TO TXGA INDUSTRIAL ELECTRONICS(S.Z)CO.,LTD AND SHOULD NOT BE USED WITHOUT WRITTEN PERMISSION		

REV	LOCATIONS	DESCRIPTION	DATE	REVISER	APPD



### Ordering Information

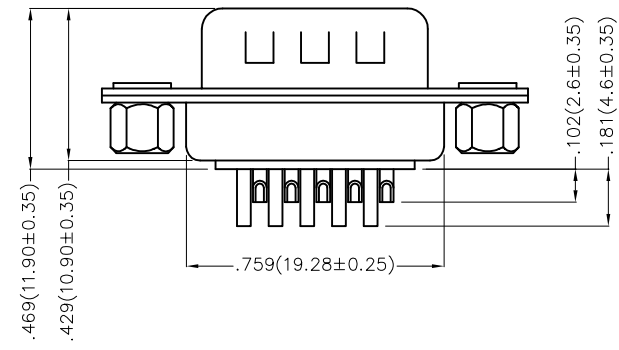
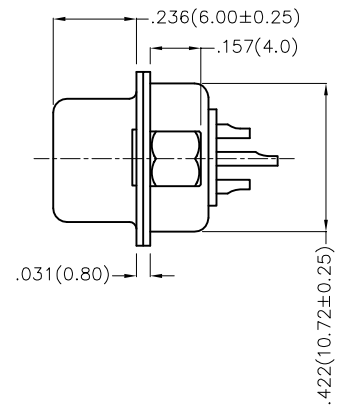
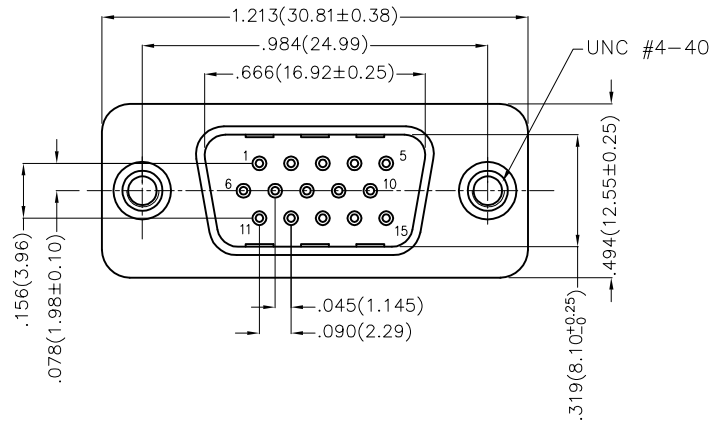
FDM 15 11 — MO W S 1 XX XX K B  
 1 2 3 4 5 6 7 8 9 10 11

1   Category FDM—Machined pin D—SUB connector	2   Circuits 15	3   Distinction No. 11	4   Type MO—Male	5   Assembly Layout W—Welding Type
6   Entry Angle S—180° Vertical	7   Plating 1—Gold Plated	8   Thickness of Plating 01—1μ" 03—03μ" Custom plate available	9   Color—Resin W1—White K6—Black	10   Packaging K—Tray
			11   Distinction Type B—B Type	

Materials And Finish  
 Shell: Steel Material, Front Nickel Plated  
 Back Shell Tin Plated  
 Insulator: PBT Thermoplastic, UL 94V-0, Color: Black  
 Contact Material: Brass /Gold Plated  
 Electrical Characteristic  
 Contact Current Rating: 5.0A  
 Contact Resistance : 30 Milliohms Max  
 Dielectric Withstanding Voltage : 500V AC r.m.s Min  
 Insulation Resistance: 5000 Megaohms Min.  
 Temperature Range—Operating: -55°C ~ +105°C

 THIRD ANGLE PROJECTION	GENERAL TOLERANCES (UNLESS SPECIFIED)		APPROVE BY FRANK	DATE 23/JUL/13	PART NO. FDM1511—MOWS1XXXXXB	ITEM NO. FDM1511—MO	 Building Technology Cornerstone
	X.±.012(0.30)	X:±5'	CHECKED BY CHERRY	DATE 23/JUL/13	TITLE Machined pin D—SUB connector 180° Vertical Male		
DESIGN UNITS Inch (metric)	X.X±.008(0.20)	.X'±2'	DRAWN BY MATT	DATE 23/JUL/13	THIS DRAWING CONTAINS INFORMATION THAT IS PROPRIETARY TO TXGA INDUSTRIAL ELECTRONICS(S.Z)CO.,LTD AND SHOULD NOT BE USED WITHOUT WRITTEN PERMISSION		SHEET NO. 1/1
SCALE 5:1	SIZE A4	X.XXX±.004(0.10)					

REV	LOCATIONS	DESCRIPTION	DATE	REVISER	APPD



### Ordering Information

FDM 15 11 — MO W S 1 XX XX K C  
 1 2 3 4 5 6 7 8 9 10 11

1   Category FDM—Machined pin D—SUB connector	2   Circuits 15	3   Distinction No. 11	4   Type MO—Male	5   Assembly Layout W—Welding Type
6   Entry Angle S—180° Vertical	7   Plating 1—Gold Plated	8   Thickness of Plating 01—1μ" 03—03μ" Custom plate available	9   Color—Resin W1—White K6—Black	10   Packaging K—Tray
			11   Distinction Type C—C Type	

**Materials And Finish**  
 Shell: Steel Material, Front Nickel Plated  
 Back Shell Tin Plated  
 Insulator: PBT Thermoplastic, UL 94V-0, Color: Black  
 Contact Material: Brass /Gold Plated  
 Electrical Characteristic  
 Contact Current Rating: 5.0A  
 Contact Resistance : 30 Milliohms Max  
 Dielectric Withstanding Voltage : 500V AC r.m.s Min  
 Insulation Resistance: 5000 Megaohms Min.  
 Temperature Range—Operating: -55°C ~ +105°C

 THIRD ANGLE PROJECTION	GENERAL TOLERANCES (UNLESS SPECIFIED)		APPROVE BY FRANK	DATE 23/JUL/13	PART NO. FDM1511—MOWS1XXXXXC	ITEM NO. FDM1511—MO	 Building Technology Cornerstone	
	DESIGN UNITS Inch (metric)	X.±.012(0.30) X.X±.008(0.20)	X:±5° .X'±2'	CHECKED BY CHERRY	DATE 23/JUL/13	TITLE Machined pin D—SUB connector 180° Vertical Male		REV 0
SCALE 5:1	SIZE A4	X.XX±.006(0.15) X.XXX±.004(0.10)	DRAWN BY MATT	DATE 23/JUL/13	THIS DRAWING CONTAINS INFORMATION THAT IS PROPRIETARY TO TXGA INDUSTRIAL ELECTRONICS(S.Z)CO.,LTD AND SHOULD NOT BE USED WITHOUT WRITTEN PERMISSION			