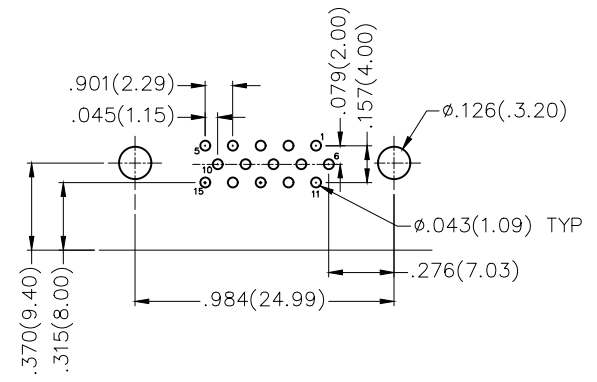
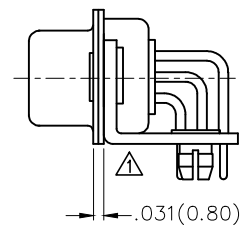
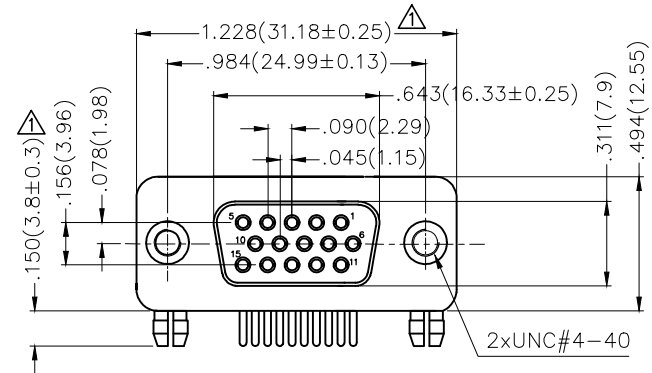
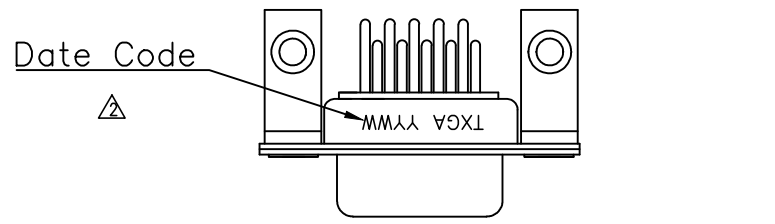
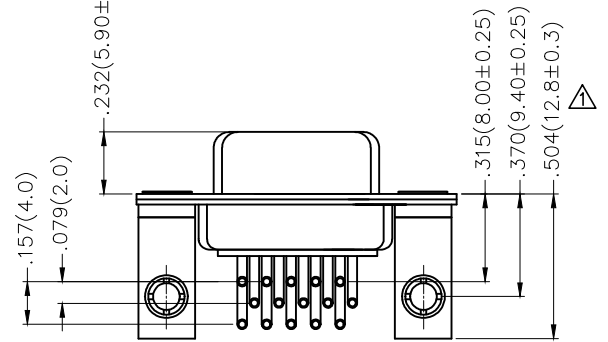


REV	LOCATIONS	DESCRIPTION	DATE	REVISER	APPD
1		size changes	09/MAY/22	MATT	CHERRY
2		Add marking code	13/Jan/25	NICK	LEO



Recommended P.C.Board Layout



Ordering Information

FDM 15 12 — FO D B 1 XX XX X B
 1 2 3 4 5 6 7 8 9 10 11

1 Category	2 Circuits	3 Distinction No.	4 Type	5 Assembly Layout
FDM-Machined pin D-SUB connector	15	12	FO-Female	D-DIP
6 Entry Angle	7 Plating	8 Thickness of Plating	9 Color-Resin	10 Packaging
B-90° Angle	1-Gold Plated	01-1µ" 03-3µ" Custom plate available	W1-White K6-Black	K-Tray L-Tube
				11 Distinction Type
				B-B Type

SPECIFICATION

Material and Plating

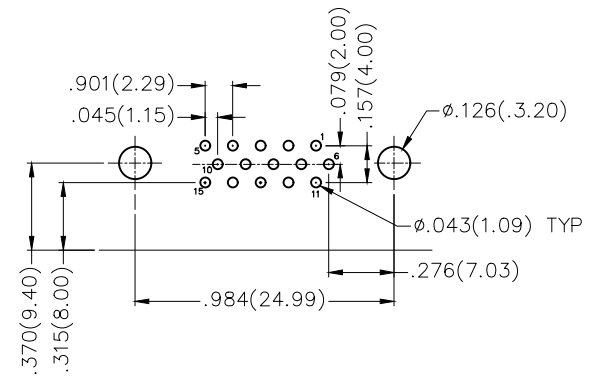
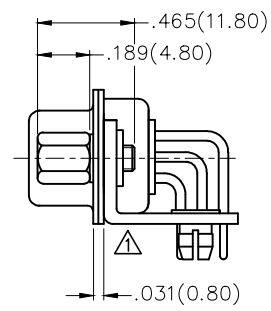
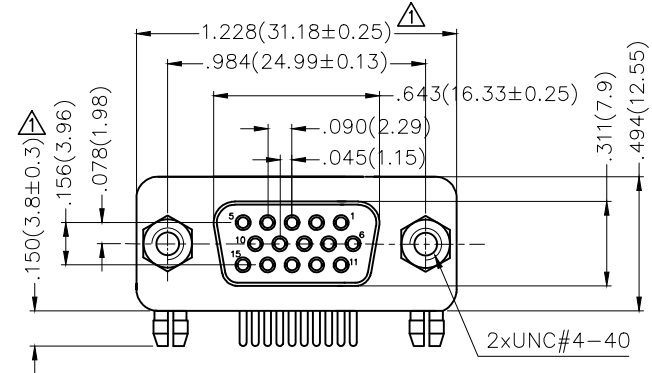
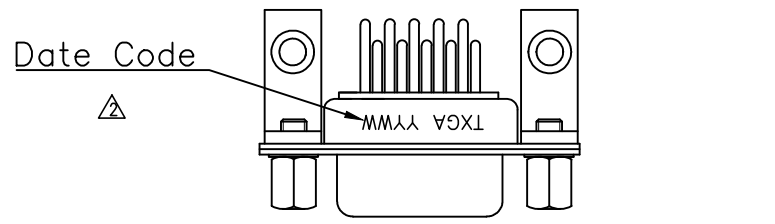
Insulator: PBT +30% G.F (UL94V-0)
 Contact: Brass/ Gold plated
 Shell: SPCC/ Front Nickel plated, Back Tin plated

Electrical

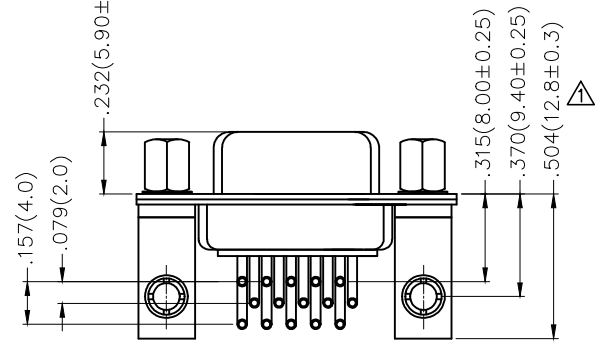
Current Rating: 5A
 Voltage Rating: 300V
 Contact resistance: 30mΩ Max
 Insulation resistance: 5000MΩ Min. at 500V DC
 Dielectric Withstanding Voltage :1000V AC r.m.s Min
 Temperature Range-Operating: -55°C ~ +105°C

	GENERAL TOLERANCES (UNLESS SPECIFIED)		APPROVE BY	DATE	PART NO.	ITEM NO.	
	X.±.012(0.30)	X.±5'	FRANK	23/JUL/13	FDM1512-F0DB1XXXXXB	FDM1512	
DESIGN UNITS	X.X±.008(0.20)	.X'±2'	CHECKED BY	DATE	TITLE		REV 2
Inch (metric)	X.XX±.006(0.15)	.XX'±1'	CHERRY	23/JUL/13	Machined pin D-SUB connector 90° Angle Female		
SCALE	X.XXX±.004(0.10)	.XXX'±0.5'	DRAWN BY	DATE	THIS DRAWING CONTAINS INFORMATION THAT IS PROPRIETARY TO TXGA INDUSTRIAL ELECTRONICS(S.Z)CO.,LTD AND SHOULD NOT BE USED WITHOUT WRITTEN PERMISSION		
5:1			JACOB	23/JUL/13			

REV	LOCATIONS	DESCRIPTION	DATE	REVISER	APPD
1	△	size changes	09/MAY/22	MATT	CHERRY
2	△	Add marking code	13/Jan/25	NICK	LEO



Recommended P.C.Board Layout



Ordering Information

FDM 15 12 — FO D B 1 XX XX X C
 1 2 3 4 5 6 7 8 9 10 11

SPECIFICATION

Material and Plating

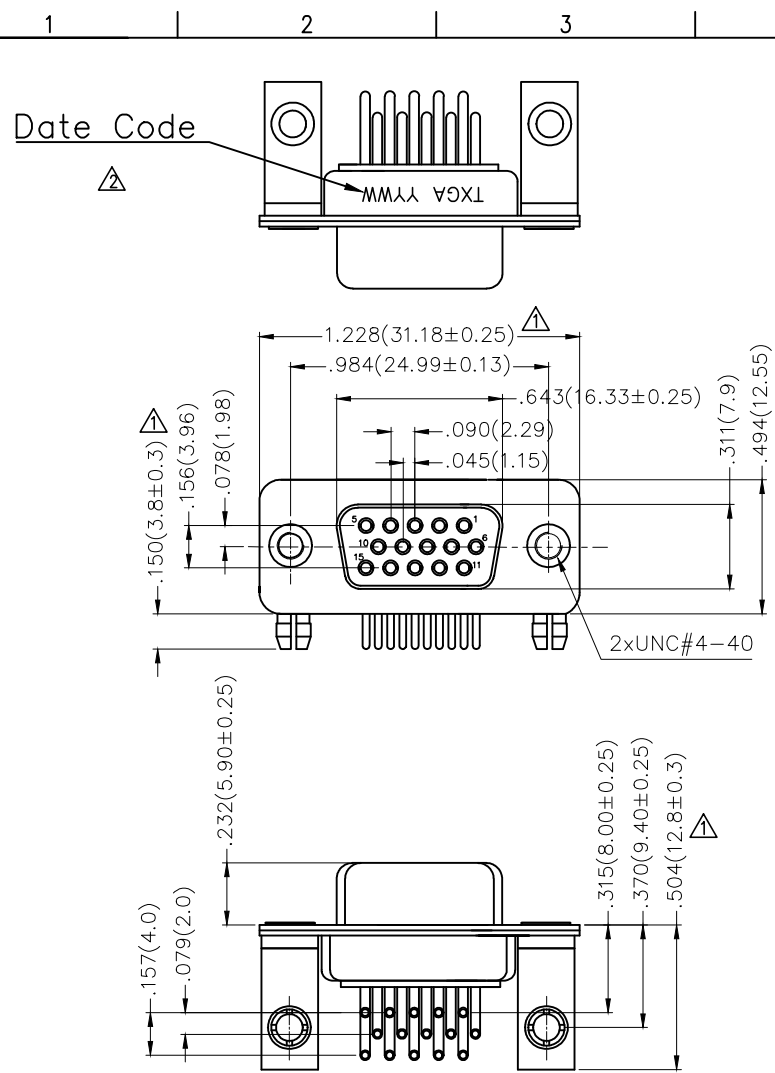
Insulator: PBT +30% G.F (UL94V-0)
 Contact: Brass/ Gold plated
 Shell: SPCC/ Front Nickel plated, Back Tin plated

Electrical

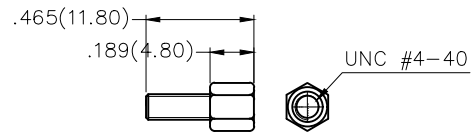
Current Rating: 5A
 Voltage Rating: 300V
 Contact resistance: 30mΩ Max
 Insulation resistance: 5000MΩ Min. at 500V DC
 Dielectric Withstanding Voltage :1000V AC r.m.s Min
 Temperature Range—Operating: -55°C ~ +105°C

1	Category	2	Circuits	3	Distinction No.	4	Type	5	Assembly Layout		
	FDM—Machined pin D—SUB connector		15		12		FO—Female		D—DIP		
6	Entry Angle	7	Plating	8	Thickness of Plating	9	Color—Resin	10	Packaging	11	Distinction Type
	B—90° Angle		1—Gold Plated		01—1μ" 03—3μ" Custom plate available		W1—White K6—Black		K—Tray L—Tube		C—C Type

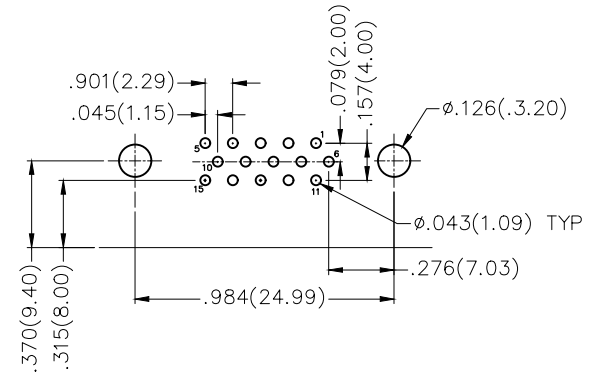
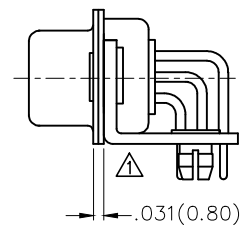
THIRD ANGLE PROJECTION		GENERAL TOLERANCES (UNLESS SPECIFIED)		APPROVE BY	DATE	PART NO.	ITEM NO.	Leader Of Industry	
		X.±.012(0.30)	X.±5'	FRANK	23/JUL/13	FDM1512—F0DB1XXXXXC	FDM1512		
DESIGN UNITS		X.X±.008(0.20)	.X'±2'	CHECKED BY	DATE	TITLE		Mached pin D—SUB connector 90° Angle Female	
Inch (metric)		X.XX±.006(0.15)	.XX'±1'	CHERRY	23/JUL/13				
SCALE	SIZE	X.XXX±.004(0.10)	.XXX'±0.5'	DRAWN BY	DATE	THIS DRAWING CONTAINS INFORMATION THAT IS PROPRIETARY TO TXGA INDUSTRIAL ELECTRONICS(S.Z)CO.,LTD AND SHOULD NOT BE USED WITHOUT WRITTEN PERMISSION		REV 2	SHEET NO. 1/1
5:1	A4			JACOB	23/JUL/13				



REV	LOCATIONS	DESCRIPTION	DATE	REVISER	APPD
1	△	size changes	09/MAY/22	MATT	CHERRY
2	△	Add marking code	13/Jan/25	NICK	LEO



Screw (2pcs)



Recommended P.C.Board Layout

Ordering Information

FDM	15	12	—	FO	D	B	1	XX	XX	X	D
1	2	3	4	5	6	7	8	9	10	11	

SPECIFICATION

Material and Plating

Insulator: PBT +30% G.F (UL94V-0)
 Contact: Brass/ Gold plated
 Shell: SPCC/ Front Nickel plated, Back Tin plated

Electrical

Current Rating: 5A
 Voltage Rating: 300V
 Contact resistance: 30mΩ Max
 Insulation resistance: 5000MΩ Min. at 500V DC
 Dielectric Withstanding Voltage :1000V AC r.m.s Min
 Temperature Range—Operating: -55°C ~ +105°C

1	Category	2	Circuits	3	Distinction No.	4	Type	5	Assembly Layout		
	FDM—Machined pin D—SUB connector		15		12		FO—Female		D—DIP		
6	Entry Angle	7	Plating	8	Thickness of Plating	9	Color—Resin	10	Packaging	11	Distinction Type
	B—90° Angle		1—Gold Plated		01—1μ" 03—3μ" Custom plate available		W1—White K6—Black		K—Tray L—Tube		D—D Type

 THIRD ANGLE PROJECTION	GENERAL TOLERANCES (UNLESS SPECIFIED)		APPROVE BY	DATE	PART NO.	ITEM NO.	 Leader Of Industry
	X.±.012(0.30)	X.±5'	FRANK	23/JUL/13	FDM1512-F0DB1XXXXD	FDM1512	
DESIGN UNITS Inch (metric)	X.X±.008(0.20)	.X'±2'	CHECKED BY	DATE	TITLE		REV 2 SHEET NO. 1/1
SCALE	X.XX±.006(0.15)	.XX'±1'	CHERRY	23/JUL/13	Machined pin D—SUB connector 90° Angle Female		
SIZE 5:1 A4	X.XXX±.004(0.10)	.XXX'±0.5'	DRAWN BY	DATE	THIS DRAWING CONTAINS INFORMATION THAT IS PROPRIETARY TO TXGA INDUSTRIAL ELECTRONICS(S.Z)CO.,LTD AND SHOULD NOT BE USED WITHOUT WRITTEN PERMISSION		
			JACOB	23/JUL/13			