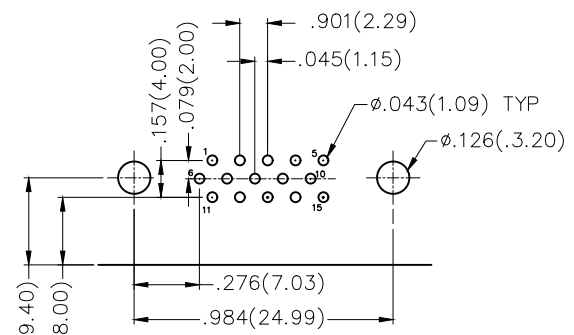
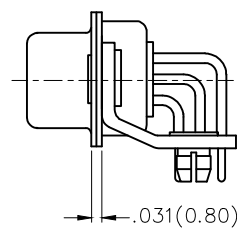
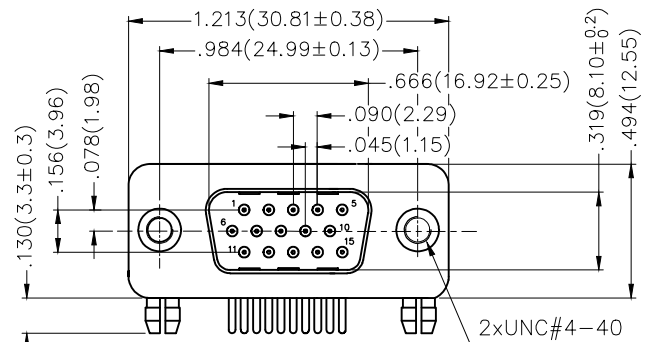
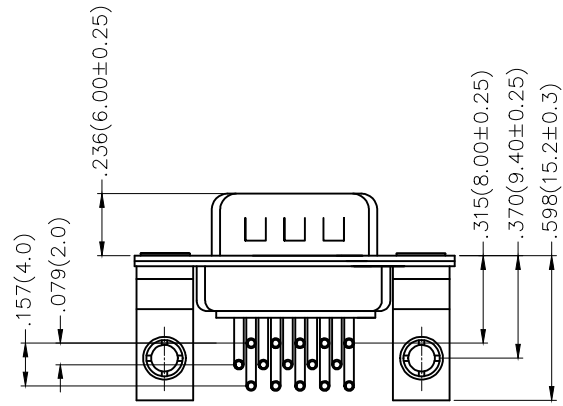


| REV | LOCATIONS | DESCRIPTION | DATE | REVSER | APPD |
|-----|-----------|-------------|------|--------|------|
|     |           |             |      |        |      |



Recommended P.C. Board Layout



### Ordering Information

FDM 15 12 — M0 D B 1 XX XX X B  
 1 2 3 4 5 6 7 8 9 10 11

|   |                                  |   |               |   |  |   |                      |    |                  |    |                  |
|---|----------------------------------|---|---------------|---|--|---|----------------------|----|------------------|----|------------------|
| 1 | Category                         | 2 | Circuits      | 3 | Distinction No.                            | 4 | Type                 | 5  | Assembly Layout  |    |                  |
|   | FDM-Machined pin D-SUB connector |   | 15            |   | 12   |   | MO-Male              |    | D-DIP            |    |                  |
| 6 | Entry Angle                      | 7 | Plating       | 8 | Thickness of Plating                       | 9 | Color-Resin          | 10 | Packaging        | 11 | Distinction Type |
|   | B-90° Angle                      |   | 1-Gold Plated |   | 01-1µ"<br>03-3µ"<br>Custom plate available |   | W1-White<br>K6-Black |    | K-Tray<br>L-Tube |    | B-B Type         |

### SPECIFICATION

#### Material and Plating

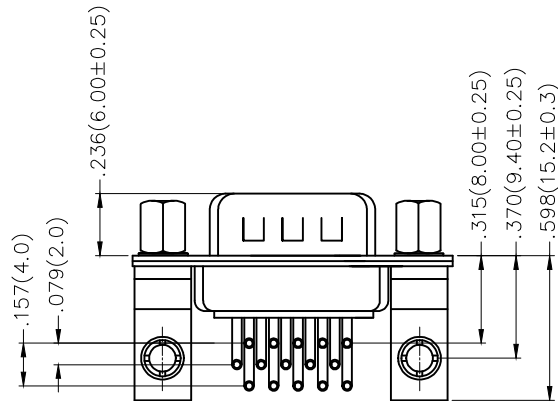
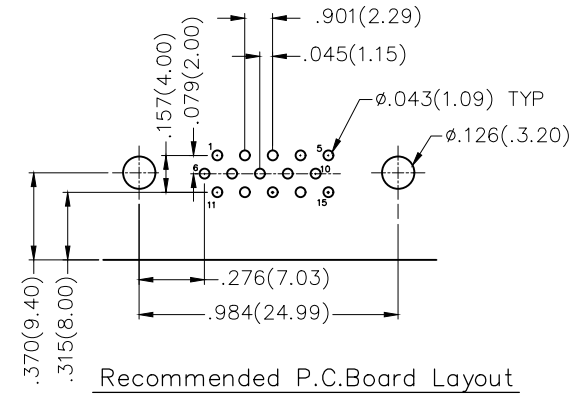
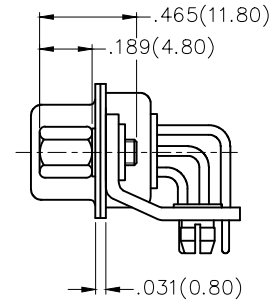
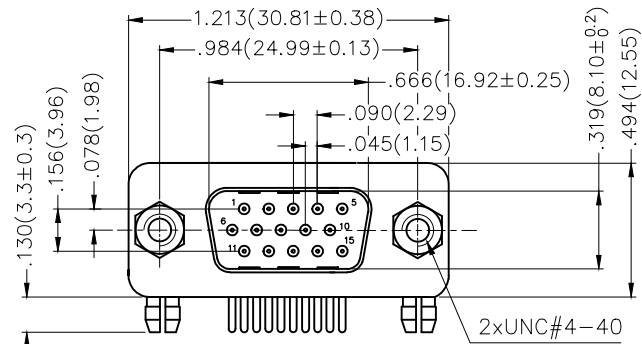
Insulator: PBT +30% G.F (UL94V-0)  
 Contact: Brass/ Gold plated  
 Shell: SPCC/ Front Nickel plated, Back Tin plated

#### Electrical

Current Rating: 5A  
 Voltage Rating: 300V  
 Contact resistance: 30mΩ Max  
 Insulation resistance: 5000MΩ Min. at 500V DC  
 Dielectric Withstanding Voltage :1000V AC r.m.s Min  
 Temperature Range-Operating: -55°C ~ +105°C

|                               |                                       |            |            |           |  |          |                        |
|-------------------------------|---------------------------------------|------------|------------|-----------|--|----------|------------------------|
| <br>THIRD ANGLE PROJECTION    | GENERAL TOLERANCES (UNLESS SPECIFIED) |            | APPROVE BY | DATE      | PART NO.   | ITEM NO. | <br>Leader Of Industry |
|                               | X.±.012(0.30)                         | X.±5'      | FRANK      | 23/JUL/13 | FDM1512-M0DB1XXXXXB  | FDM1512  |                        |
| DESIGN UNITS<br>Inch (metric) | X.X±.008(0.20)                        | .X'±2'     | CHECKED BY | DATE      | TITLE  |          | REV 0    SHEET NO. 1/1 |
| SCALE<br>5:1                  | X.XX±.006(0.15)                       | .XX'±1'    | CHERRY     | 23/JUL/13 | Machined pin D-SUB connector<br>90° Angle Male   |          |                        |
| SIZE<br>A4                    | X.XXX±.004(0.10)                      | .XXX'±0.5' | DRAWN BY   | DATE      | THIS DRAWING CONTAINS INFORMATION THAT IS PROPRIETARY TO TXGA INDUSTRIAL ELECTRONICS(S.Z)CO.,LTD AND SHOULD NOT BE USED WITHOUT WRITTEN PERMISSION |          |                        |
|                               |                                       |            | JACOB      | 23/JUL/13 |  |          |                        |

| REV | LOCATIONS | DESCRIPTION | DATE | REVISER | APPD |
|-----|-----------|-------------|------|---------|------|
|     |           |             |      |         |      |



### Ordering Information

FDM 15 12 — M0 D B 1 XX XX X C  
 1 2 3 4 5 6 7 8 9 10 11

### SPECIFICATION

#### Material and Plating

Insulator: PBT +30% G.F (UL94V-0)  
 Contact: Brass/ Gold plated  
 Shell: SPCC/ Front Nickel plated, Back Tin plated

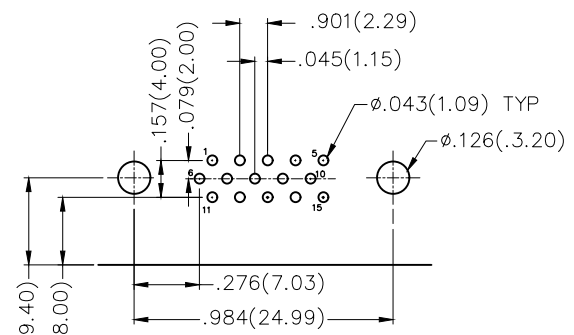
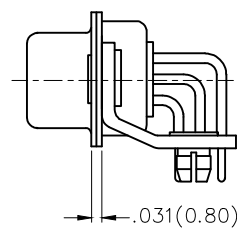
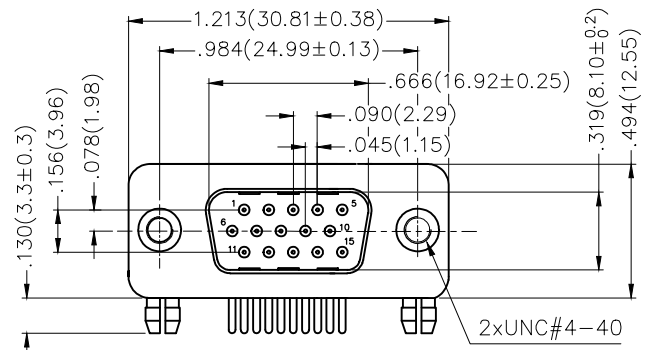
#### Electrical

Current Rating: 5A  
 Voltage Rating: 300V  
 Contact resistance: 30mΩ Max  
 Insulation resistance: 5000MΩ Min. at 500V DC  
 Dielectric Withstanding Voltage :1000V AC r.m.s Min  
 Temperature Range—Operating: -55°C ~ +105°C

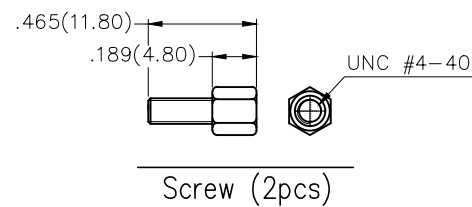
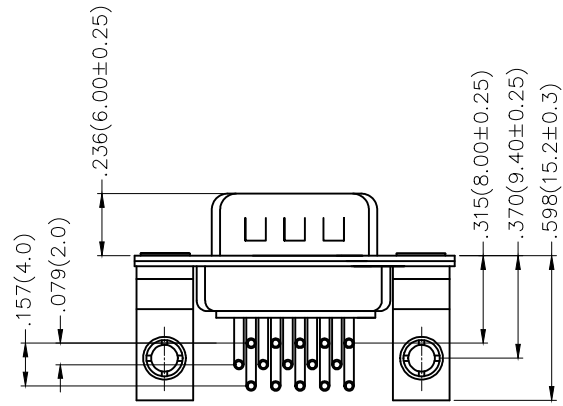
|   |                                  |   |               |   |  |   |                      |    |                  |    |                  |
|---|----------------------------------|---|---------------|---|--|---|----------------------|----|------------------|----|------------------|
| 1 | Category                         | 2 | Circuits      | 3 | Distinction No.                            | 4 | Type                 | 5  | Assembly Layout  |    |                  |
|   | FDM—Machined pin D—SUB connector |   | 15            |   | 12   |   | M0—Male              |    | D—DIP            |    |                  |
| 6 | Entry Angle                      | 7 | Plating       | 8 | Thickness of Plating                       | 9 | Color—Resin          | 10 | Packaging        | 11 | Distinction Type |
|   | B—90° Angle                      |   | 1—Gold Plated |   | 01—1μ"<br>03—3μ"<br>Custom plate available |   | W1—White<br>K6—Black |    | K—Tray<br>L—Tube |    | C—C Type         |

|                               |                                       |            |            |           |  |          |                        |
|-------------------------------|---------------------------------------|------------|------------|-----------|--|----------|------------------------|
| <br>THIRD ANGLE PROJECTION    | GENERAL TOLERANCES (UNLESS SPECIFIED) |            | APPROVE BY | DATE      | PART NO.   | ITEM NO. | <br>Leader Of Industry |
|                               | X.±.012(0.30)                         | X.±5'      | FRANK      | 23/JUL/13 | FDM1512—M0DB1XXXXXC  | FDM1512  |                        |
| DESIGN UNITS<br>Inch (metric) | X.X±.008(0.20)                        | .X'±2'     | CHECKED BY | DATE      | TITLE  |          | REV 0    SHEET NO. 1/1 |
| SCALE                         | X.XX±.006(0.15)                       | .XX'±1'    | CHERRY     | 23/JUL/13 | Machined pin D—SUB connector<br>90° Angle Male   |          |                        |
| 5:1                           | X.XXX±.004(0.10)                      | .XXX'±0.5' | DRAWN BY   | DATE      | THIS DRAWING CONTAINS INFORMATION THAT IS PROPRIETARY TO TXGA INDUSTRIAL ELECTRONICS(S.Z)CO.,LTD AND SHOULD NOT BE USED WITHOUT WRITTEN PERMISSION |          |                        |
| A4                            |                                       |            | JACOB      | 23/JUL/13 |  |          |                        |

| REV | LOCATIONS | DESCRIPTION | DATE | REVSER | APPD |
|-----|-----------|-------------|------|--------|------|
|     |           |             |      |        |      |



Recommended P.C.Board Layout



### Ordering Information

FDM 15 12 — M0 D B 1 XX XX X D  
 1 2 3 4 5 6 7 8 9 10 11

|   |                                  |   |               |   |  |   |                      |    |                  |    |                  |
|---|----------------------------------|---|---------------|---|--|---|----------------------|----|------------------|----|------------------|
| 1 | Category                         | 2 | Circuits      | 3 | Distinction No.                            | 4 | Type                 | 5  | Assembly Layout  |    |                  |
|   | FDM-Machined pin D-SUB connector |   | 15            |   | 12   |   | MO-Male              |    | D-DIP            |    |                  |
| 6 | Entry Angle                      | 7 | Plating       | 8 | Thickness of Plating                       | 9 | Color-Resin          | 10 | Packaging        | 11 | Distinction Type |
|   | B-90° Angle                      |   | 1-Gold Plated |   | 01-1µ"<br>03-3µ"<br>Custom plate available |   | W1-White<br>K6-Black |    | K-Tray<br>L-Tube |    | D-D Type         |

### SPECIFICATION

#### Material and Plating

Insulator: PBT +30% G.F (UL94V-0)  
 Contact: Brass/ Gold plated  
 Shell: SPCC/ Front Nickel plated, Back Tin plated

#### Electrical

Current Rating: 5A  
 Voltage Rating: 300V  
 Contact resistance: 30mΩ Max  
 Insulation resistance: 5000MΩ Min. at 500V DC  
 Dielectric Withstanding Voltage :1000V AC r.m.s Min  
 Temperature Range-Operating: -55°C ~ +105°C

|                               |                                       |            |            |           |  |          |                        |
|-------------------------------|---------------------------------------|------------|------------|-----------|--|----------|------------------------|
| <br>THIRD ANGLE PROJECTION    | GENERAL TOLERANCES (UNLESS SPECIFIED) |            | APPROVE BY | DATE      | PART NO.   | ITEM NO. | <br>Leader Of Industry |
|                               | X.±.012(0.30)                         | X'.±5'     | FRANK      | 23/JUL/13 | FDM1512-M0DB1XXXXXD  | FDM1512  |                        |
| DESIGN UNITS<br>Inch (metric) | X.X±.008(0.20)                        | .X'±2'     | CHECKED BY | DATE      | TITLE  |          | REV 0                  |
| SCALE                         | X.XX±.006(0.15)                       | .XX'±1'    | CHERRY     | 23/JUL/13 | Machined pin D-SUB connector<br>90° Angle Male   |          | SHEET NO. 1/1          |
| 5:1                           | X.XXX±.004(0.10)                      | .XXX'±0.5' | DRAWN BY   | DATE      | THIS DRAWING CONTAINS INFORMATION THAT IS PROPRIETARY TO TXGA INDUSTRIAL ELECTRONICS(S.Z)CO.,LTD AND SHOULD NOT BE USED WITHOUT WRITTEN PERMISSION |          |                        |
| A4                            |                                       |            | JACOB      | 23/JUL/13 |  |          |                        |