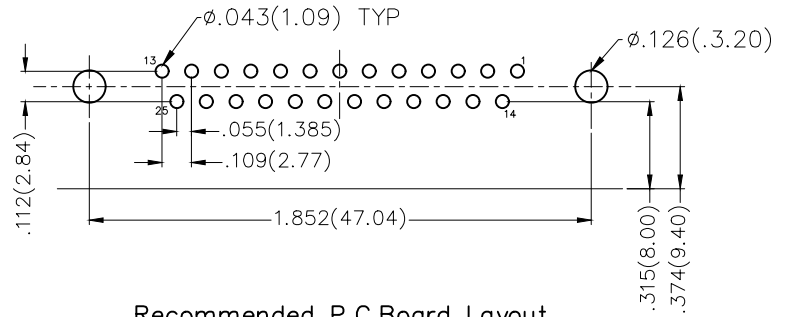
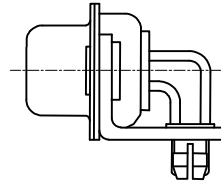
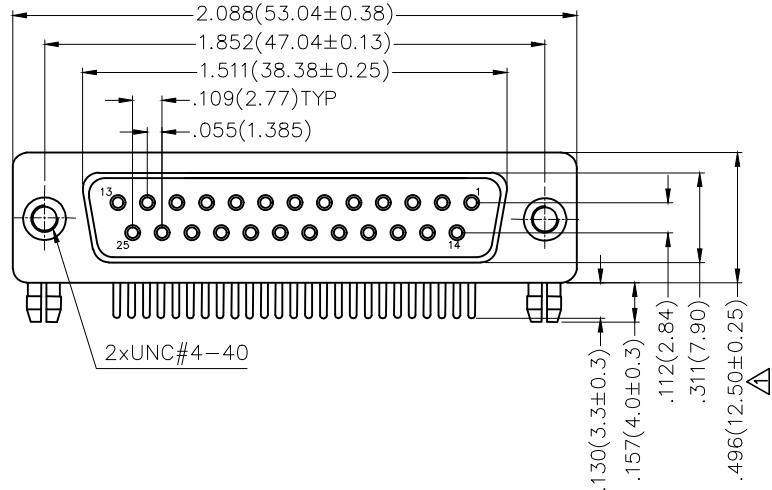
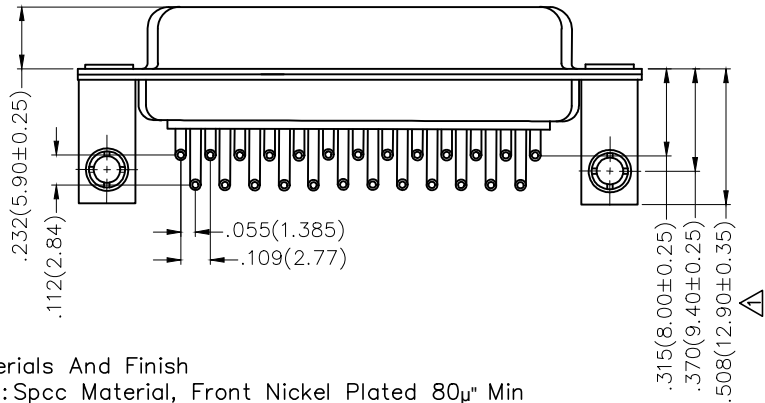


REV	LOCATIONS	DESCRIPTION	DATE	REVISED	APPD
1	△	Size changes	26/DEC/23	MATT	LEO
2	△	Add marking code	13/Jan/25	NICK	LEO



Recommended P.C. Board Layout



Ordering Information

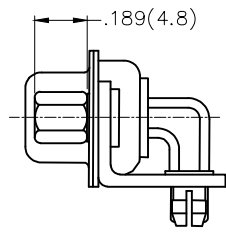
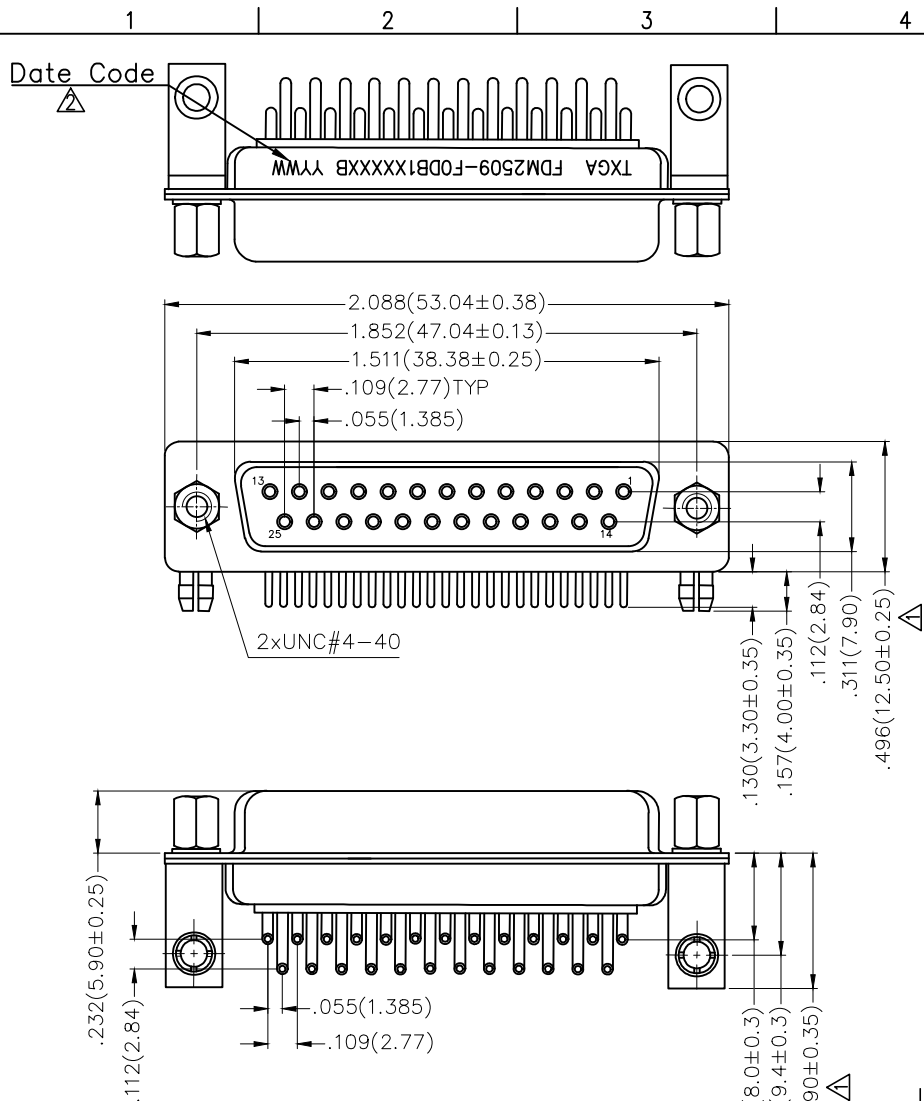
FDM 25 09 — F0 D B 1 XX XX X A
 1 2 3 4 5 6 7 8 9 10 11

1 Category	2 Circuits	3 Distinction No.	4 Type	5 Assembly Layout	
FDM-Machined pin D-SUB connector	25	09	F0-Female	D-DIP	
6 Entry Angle	7 Plating	8 Thickness of Plating	9 Color-Resin	10 Packaging	11 Distinction Type
B-90° Angle	1-Gold Plated	01-1μ" 03-3μ" Custom plate available	W1-White K6-Black	K-Tray L-Tube	A-A Type

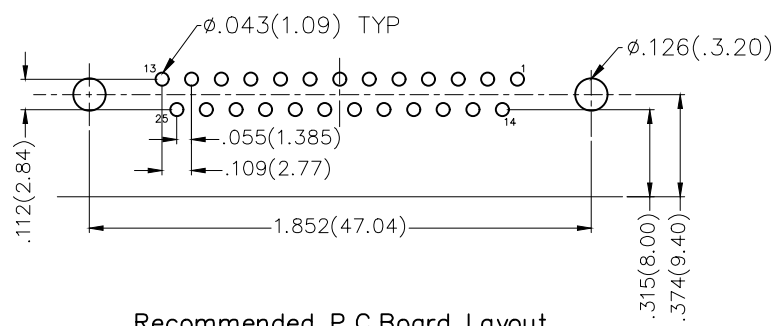
Materials And Finish

Shell: Spcc Material, Front Nickel Plated 80μ" Min
 Back Shell: SPCC, Tin Plated 100μ" Min
 Insulator: Glass Filled Thermoplastic, UL 94V-0
 Contact Material: Brass /Gold Plated
 Electrical Characteristic
 Current Rating: 7.5A
 Voltage Rating: 300V
 Contact Resistance: 5mΩ Max
 Dielectric Withstanding Voltage :1000V AC r.m.s
 Insulation Resistance: 5000 MΩ Min.
 Temperature Range-Operating: -55°C ~ +105°C

THIRD ANGLE PROJECTION	GENERAL TOLERANCES (UNLESS SPECIFIED)		APPROVE BY	DATE	PART NO.	ITEM NO.	 Building Technology Cornerstone
	X.±.012(0.30)	X.±5'	FRANK	23/JUL/13	FDM2509-F0DB1XXXXXA	FDM2509	
DESIGN UNITS Inch (metric)	X.X±.008(0.20)	.X'±2'	CHECKED BY	DATE	TITLE		REV 2
SCALE	X.XX±.006(0.15)	.XX'±1'	CHERRY	23/JUL/13	Machined pin D-SUB connector 90° Angle Female		SHEET NO. 1/1
SIZE	X.XXX±.004(0.10)	.XXX'±0.5'	DRAWN BY	DATE	THIS DRAWING CONTAINS INFORMATION THAT IS PROPRIETARY TO TXGA INDUSTRIAL ELECTRONICS(S.Z)CO.,LTD AND SHOULD NOT BE USED WITHOUT WRITTEN PERMISSION		
5:1			JACOB	23/JUL/13			



REV	LOCATIONS	DESCRIPTION	DATE	REVISER	APPD
1	△	Size changes	27/JUL/21	KATE	CHERRY
2	△	Add marking code	13/Jan/25	NICK	LEO



Recommended P.C.Board Layout

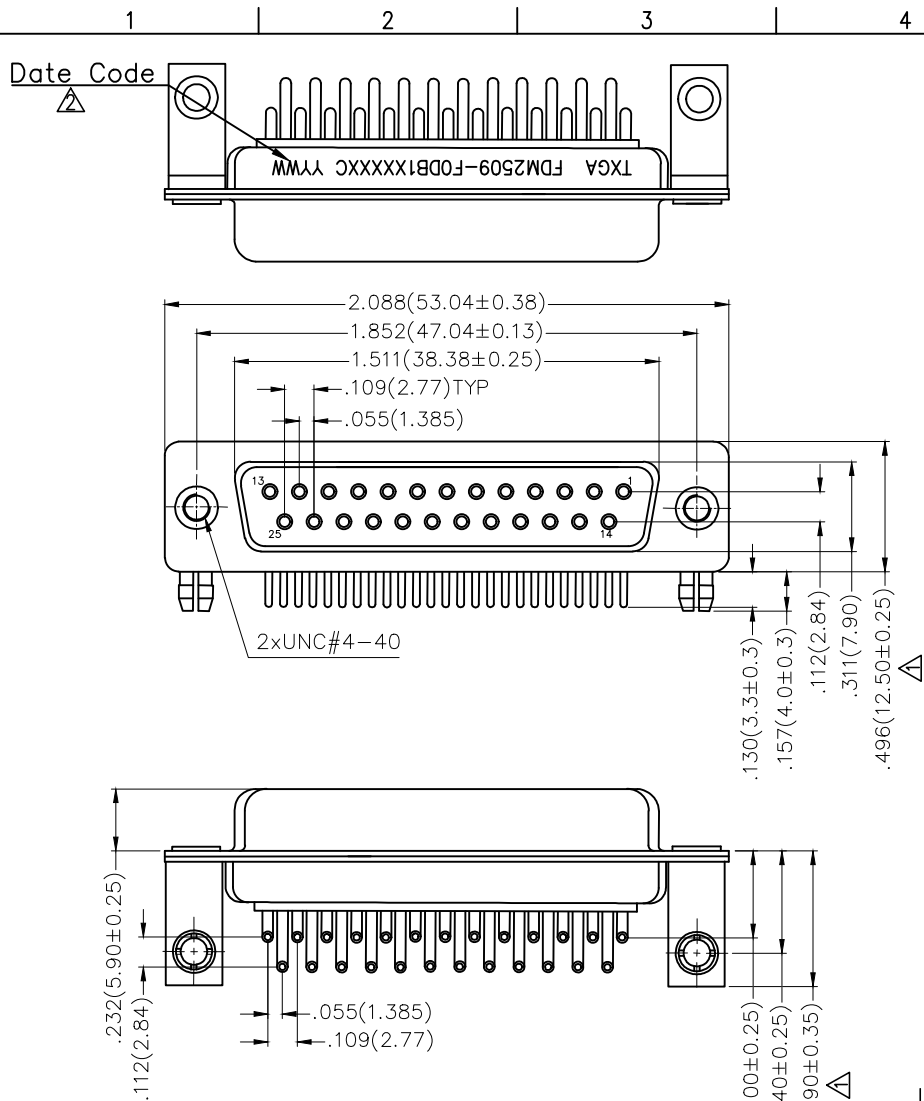
Ordering Information

FDM 25 09 — FO D B 1 XX XX X B
 1 2 3 4 5 6 7 8 9 10 11

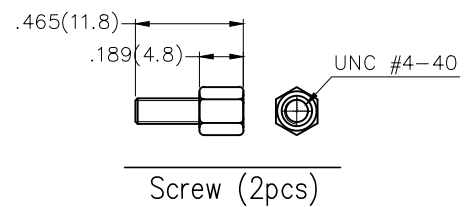
1 Category	2 Circuits	3 Distinction No.	4 Type	5 Assembly Layout
FDM-Machined pin D-SUB connector	25	09	FO-Female	D-DIP
6 Entry Angle	7 Plating	8 Thickness of Plating	9 Color-Resin	10 Packaging
B-90° Angle	1-Gold Plated	01-1μ" 03-3μ" Custom plate available	W1-White K6-Black	K-Tray L-Tube
				11 Distinction Type
				B-B Type

Materials And Finish
 Shell: Spcc Material, Front Nickel Plated 80μ" Min
 Back Shell: SPCC, Tin Plated 100μ" Min
 Insulator: Glass Filled Thermoplastic, UL 94V-0
 Contact Material: Brass /Gold Plated
Electrical Characteristic
 Current Rating: 7.5A
 Voltage Rating: 300V
 Contact Resistance: 5mΩ Max
 Dielectric Withstanding Voltage :1000V AC r.m.s
 Insulation Resistance: 5000 MΩ Min.
 Temperature Range-Operating: -55°C ~ +105°C

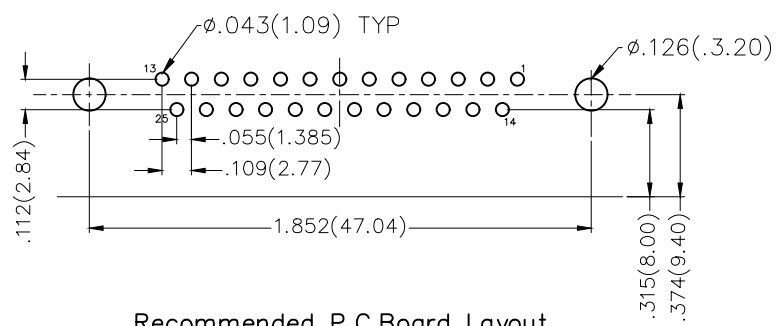
THIRD ANGLE PROJECTION		GENERAL TOLERANCES (UNLESS SPECIFIED)		APPROVE BY	DATE	PART NO.	ITEM NO.	 Building Technology Cornerstone	
DESIGN UNITS Inch (metric)	X.±.012(0.30)	X.±5°	FRANK	23/JUL/13	FDM2509-F0DB1XXXXXB	FDM2509	REV 2		SHEET NO. 1/1
	X.X±.008(0.20)	.X'±2°	CHECKED BY	DATE	TITLE Machined pin D-SUB connector 90° Angle Female				
	X.XX±.006(0.15)	.XX'±1°	CHERRY	23/JUL/13					
SCALE	SIZE	X.XXX±.004(0.10)	.XXX'±0.5°	DRAWN BY	DATE	THIS DRAWING CONTAINS INFORMATION THAT IS PROPRIETARY TO TXGA INDUSTRIAL ELECTRONICS(S.Z)CO.,LTD AND SHOULD NOT BE USED WITHOUT WRITTEN PERMISSION			
5:1	A4			JACOB	23/JUL/13				



REV	LOCATIONS	DESCRIPTION	DATE	REVSER	APPD
1	△	Size changes	26/DEC/23	MATT	LEO
2	△	Add marking code	13/Jan/25	NICK	LEO



Screw (2pcs)



Recommended P.C.Board Layout

Materials And Finish
 Shell: Spcc Material, Front Nickel Plated 80µ" Min
 Back Shell: SPCC, Tin Plated 100µ" Min
 Insulator: Glass Filled Thermoplastic, UL 94V-0
 Contact Material: Brass /Gold Plated
Electrical Characteristic
 Current Rating: 7.5A
 Voltage Rating: 300V
 Contact Resistance: 5mΩ Max
 Dielectric Withstanding Voltage :1000V AC r.m.s
 Insulation Resistance: 5000 MΩ Min.
 Temperature Range-Operating: -55°C ~ +105°C

Ordering Information

FDM 25 09 - FO D B 1 XX XX X C
 1 2 3 4 5 6 7 8 9 10 11

1 Category	2 Circuits	3 Distinction No.	4 Type	5 Assembly Layout	
FDM-Machined pin D-SUB connector	25	09	FO-Female	D-DIP	
6 Entry Angle	7 Plating	8 Thickness of Plating	9 Color-Resin	10 Packaging	11 Distinction Type
B-90° Angle	1-Gold Plated	01-1µ" 03-3µ" Custom plate available	W1-White K6-Black	K-Tray L-Tube	C-C Type

THIRD ANGLE PROJECTION	GENERAL TOLERANCES (UNLESS SPECIFIED)		APPROVE BY	DATE	PART NO.	ITEM NO.	 Building Technology Cornerstone
	X.±.012(0.30)	X.±5'	FRANK	23/JUL/13	FDM2509-F0DB1XXXXXC	FDM2509	
DESIGN UNITS Inch (metric)	X.X±.008(0.20)	.X'±2'	CHECKED BY	DATE	TITLE		REV 2
SCALE	X.XX±.006(0.15)	.XX'±1'	CHERRY	23/JUL/13	Machined pin D-SUB connector 90° Angle Female		SHEET NO. 1/1
SIZE	X.XXX±.004(0.10)	.XXX'±0.5'	DRAWN BY	DATE	THIS DRAWING CONTAINS INFORMATION THAT IS PROPRIETARY TO TXGA INDUSTRIAL ELECTRONICS(S.Z)CO.,LTD AND SHOULD NOT BE USED WITHOUT WRITTEN PERMISSION		
5:1			JACOB	23/JUL/13			