

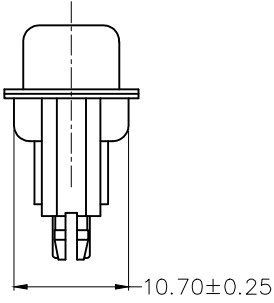
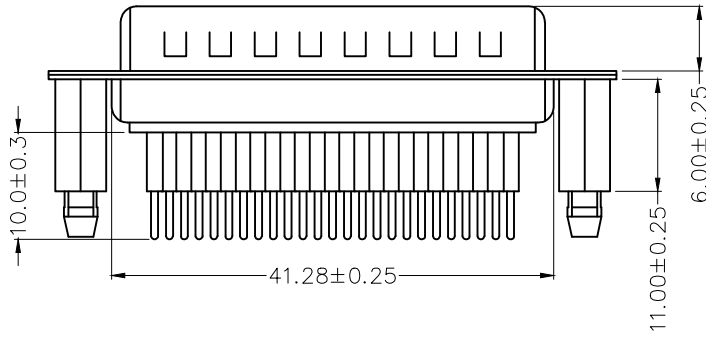
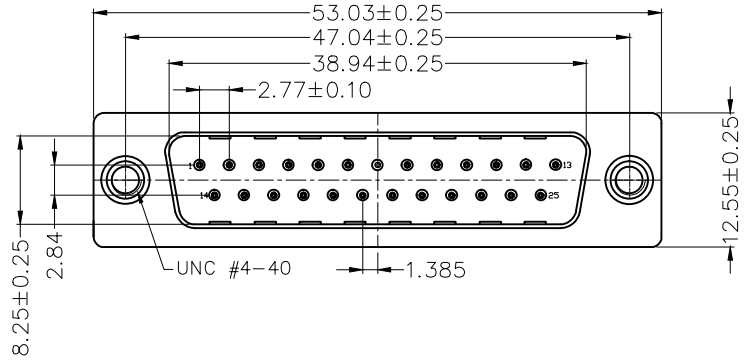
1 2 3 4 5 6 7 8

REV	LOCATIONS	DESCRIPTION	DATE	REVISER	APPD

**SPECIFICATION**

**Electrical**  
 Current Rating: 5A  
 Voltage Rating: 500V  
 Contact resistance: 30 mΩ Max  
 Insulation resistance: 5000 MΩ Min. at 500V DC  
 Dielectric Withstanding Voltage : 500V AC r.m.s Min  
 Temperature Range—Operating: -55°C ~ +105°C

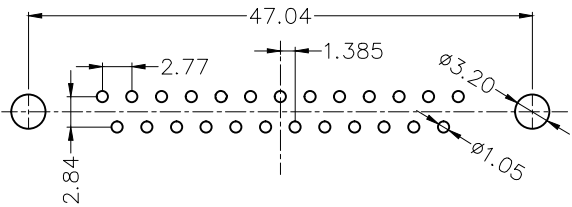
**Material and Plating**  
 Insulator: PBT+30%GF (UL94 V-0)  
 Contact: Brass/ Gold plated  
 Front Shell: SPCC/ Nickel plated  
 Back Shell: SPCC/ Tin plated




**Ordering Information**

FDM 25 23 — M0 D S 1 XX XX K A  
 1 2 3 4 5 6 7 8 9 10 11

1   Category FDM—Machined pin D—SUB connector	2   Circuits 25	3   Distinction No. 23	4   Type M0—Male	5   Assembly Layout D—DIP	6   Entry Angle S—180° Vertical
7   Plating 1—Gold plated	8   Thickness of Plating 01—0.025µm 03—0.075µm Custom plate available	9   Color—Resin WH—White BK—Black	10   Packaging K—Tray	11   Distinction Type A—A Type	



**Recommended P.C.Board Layout**  
 General tolerances: ±0.05

THIRD ANGLE PROJECTION	GENERAL TOLERANCES (UNLESS SPECIFIED)		APPROVE BY FRANK	DATE 11/MAR/21	PART NO. FDM2523—MODS1XXXXKA	ITEM NO. FDM2523	 Leader Of Industry
	X. ±0.30	X.* ±5'	CHECKED BY CHERRY	DATE 11/MAR/21	TITLE Machined pin D—SUB connector 180° Vertical Male		
DESIGN UNITS Metric	X.X ±0.20	X.X' ±2'	DRAWN BY KATE	DATE 11/MAR/21	THIS DRAWING CONTAINS INFORMATION THAT IS PROPRIETARY TO TXGA INDUSTRIAL ELECTRONICS(S.Z)CO.,LTD AND SHOULD NOT BE USED WITHOUT WRITTEN PERMISSION		
SCALE 5:1	SIZE A4	X.XX ±0.15 X.XXX ±0.10	X.XX' ±1' X.XXX' ±0.5'				

1 2 3 4 5 6 7 8