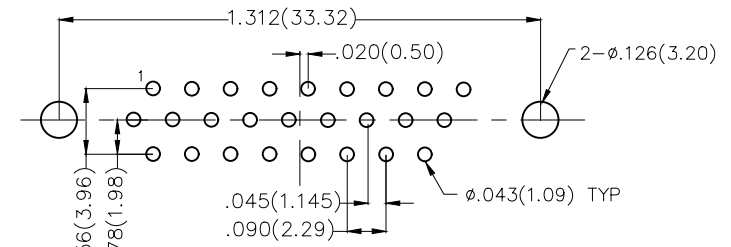
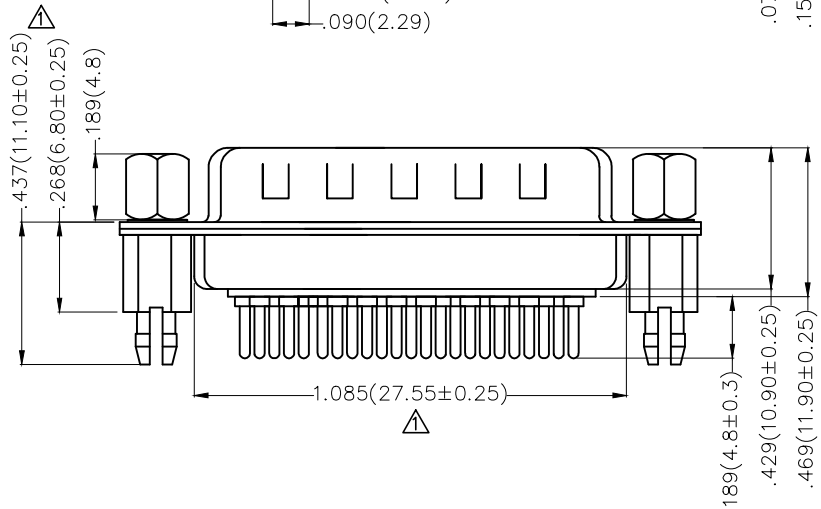
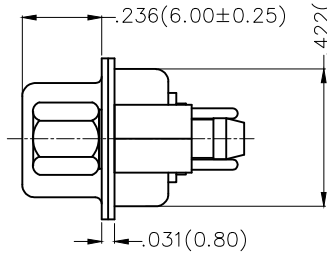
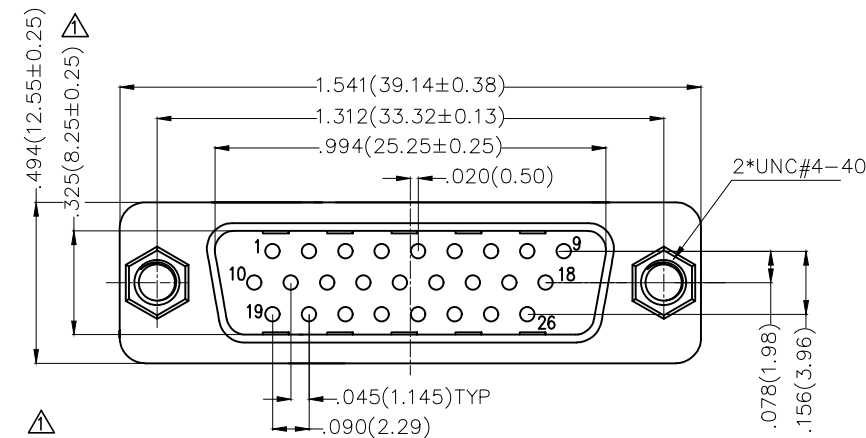


REV	LOCATIONS	DESCRIPTION	DATE	REVISOR	APPD
1	△	Size changes	18/JUN/21	KATE	CHERRY



Recommended P.C.Board Layout

### Ordering Information

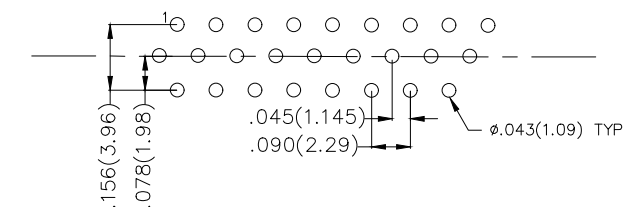
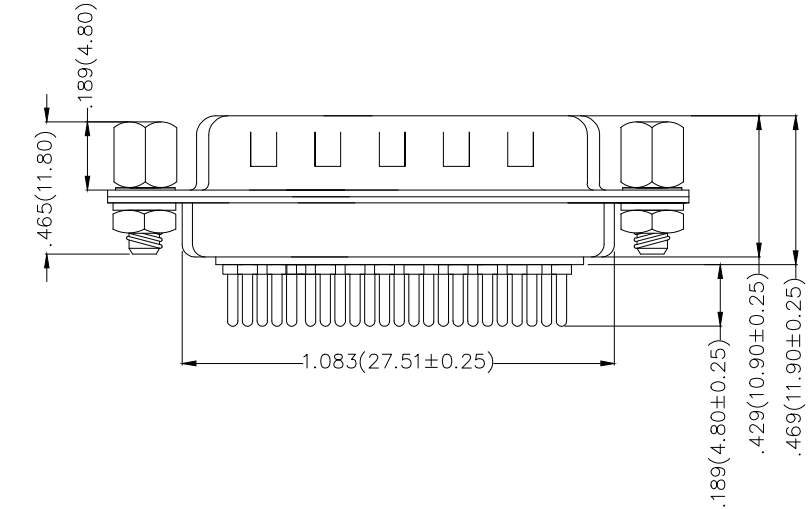
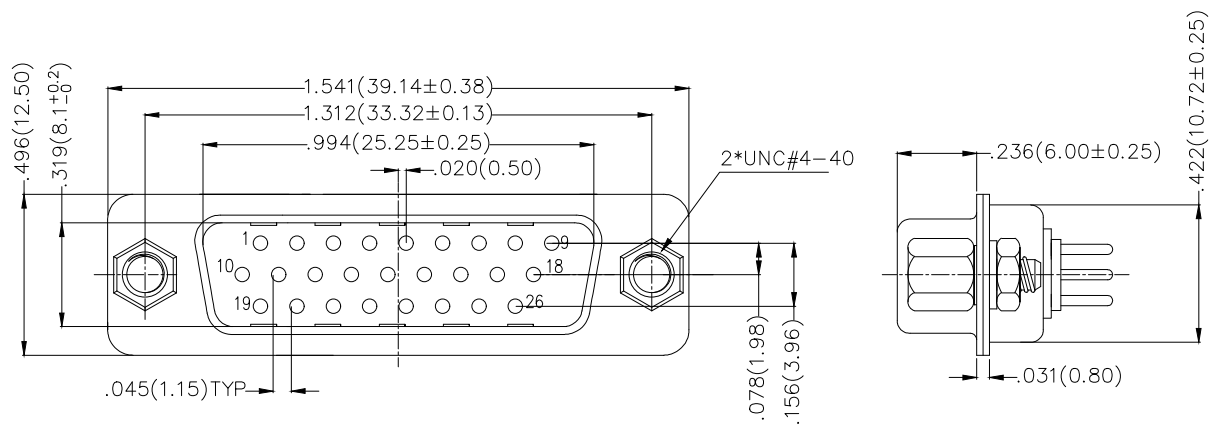
FDM 26 15 — M0 D S 1 XX XX X  
 1 2 3 4 5 6 7 8 9 10

1 Category FDM-Machined pin D-SUB connector	2 Circuits 26	3 Distinction No. 15	4 Type M0-Male	5 Assembly Layout D-DIP
6 Entry Angle S-180° Vertical	7 Plating 1-Gold Plated	8 Thickness of Plating 01-1μ" 03-03μ"	9 Color-Resin W1-White K6-Black	10 Packaging K-Tray L-Tube

Materials And Finish  
 Shell: Steel Material, Front Nickel Plated  
 Back Shell Tin Plated  
 Insulator: PBT Thermoplastic, UL 94V-0  
 Contact Material: Brass /Gold Plated  
 Electrical Characteristic  
 Contact Current Rating: 5A  
 Contact Resistance : 30mΩ Max  
 Dielectric Withstanding Voltage : 1000V AC r.m.s Min  
 Insulation Resistance: 5000 Megaohms Min.  
 Temperature Range-Operating: -55°C ~ +105°C

THIRD ANGLE PROJECTION	GENERAL TOLERANCES (UNLESS SPECIFIED)		APPROVE BY	DATE	PART NO.	ITEM NO.	TXGA Leader Of Industry
	DESIGN UNITS Inch (metric)	X.±.012(0.30)	X'.±5'	FRANK	23/JUL/13	FDM2615-MODS1XXXXX	
SCALE 5:1	X.XX±.008(0.20)	X'.±2'	CHECKED BY	DATE	TITLE	REV 1	SHEET NO. 1/1
SIZE A4	X.XX±.006(0.15)	.XX'±1'	CHERRY	23/JUL/13	Machined pin D-SUB connector 180° Vertical Male		
	X.XXX±.004(0.10)	.XXX'±0.5'	DRAWN BY	DATE	THIS DRAWING CONTAINS INFORMATION THAT IS PROPRIETARY TO TXGA INDUSTRIAL ELECTRONICS(S.Z)CO.,LTD AND SHOULD NOT BE USED WITHOUT WRITTEN PERMISSION		
			JACOB	23/JUL/13			

REV	LOCATIONS	DESCRIPTION	DATE	REVISER	APPD



Recommended P.C.Board Layout

### Ordering Information

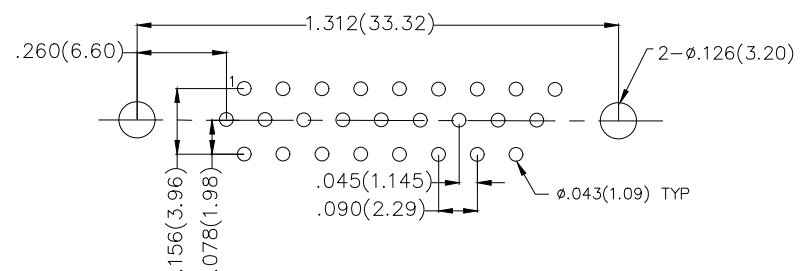
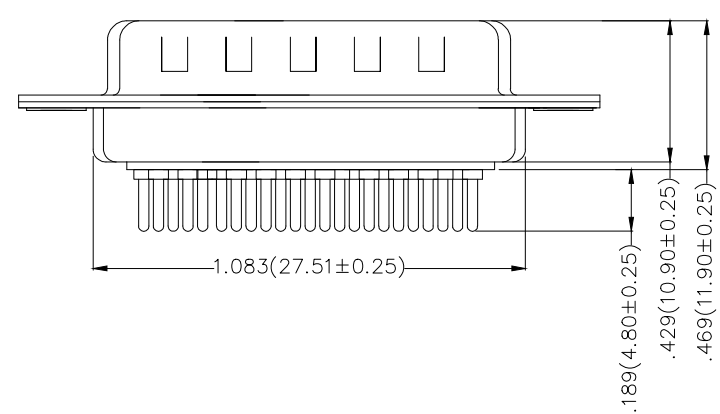
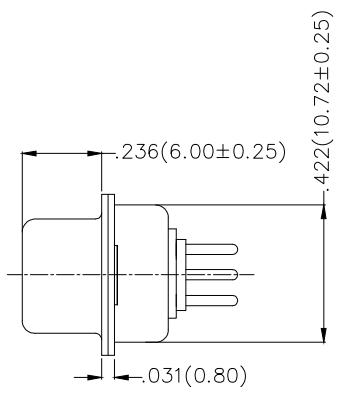
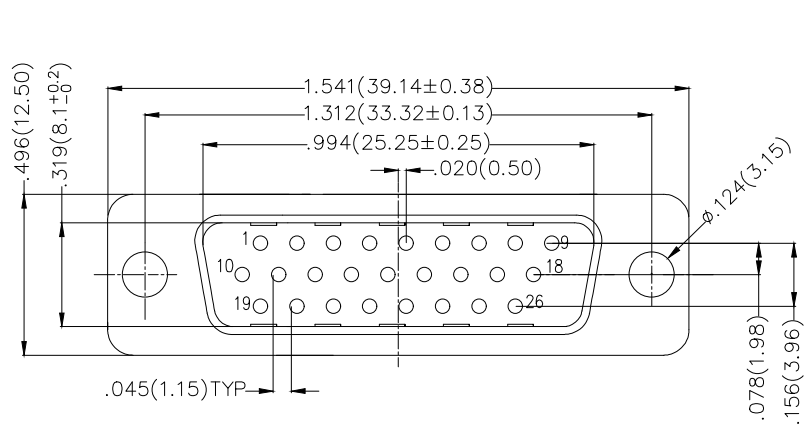
FDM 26 15 — M0 D S 1 XX XX X A  
 1 2 3 4 5 6 7 8 9 10 11

1 Category FDM—Machined pin D—SUB connector	2 Circuits 26	3 Distinction No. 15	4 Type M0—Male	5 Assembly Layout D—DIP	
6 Entry Angle S—180° Vertical	7 Plating 1—Gold Plated	8 Thickness of Plating 01—1μ" 03—03μ"	9 Color—Resin W1—White K6—Black	10 Packaging K—Tray L—Tube	11 Distinction Type A—Type A

Materials And Finish  
 Shell: Steel Material, Front Nickel Plated  
 Back Shell Tin Plated  
 Insulator: PBT Thermoplastic, UL 94V-0, Colour: Black  
 Contact Material: Brass /Gold Plated  
 Electrical Characteristic  
 Contact Current Rating: 5A  
 Contact Resistance : 30mΩ Max  
 Dielectric Withstanding Voltage : 1000V AC r.m.s Min  
 Insulation Resistance: 5000 Megaohms Min.  
 Temperature Range—Operating: -55°C ~ +105°C

 THIRD ANGLE PROJECTION DESIGN UNITS Inch (metric) SCALE 5:1 SIZE A4	GENERAL TOLERANCES (UNLESS SPECIFIED)		APPROVE BY FRANK	DATE 23/JUL/13	PART NO. FDM2615—MODS1XXXXXA	ITEM NO. FDM2615	 Leader Of Industry	
	X.±.012(0.30)	.X'±5'	CHECKED BY CHERRY	DATE 23/JUL/13	TITLE Machined pin D—SUB connector 180° Vertical Male			REV 0
	X.XX±.008(0.20)	.X'±2'	DRAWN BY JACOB	DATE 23/JUL/13	THIS DRAWING CONTAINS INFORMATION THAT IS PROPRIETARY TO TXGA INDUSTRIAL ELECTRONICS(S.Z)CO.,LTD AND SHOULD NOT BE USED WITHOUT WRITTEN PERMISSION			
	X.XX±.006(0.15)	.XX'±1'						
	X.XXX±.004(0.10)	.XXX'±0.5'						

REV	LOCATIONS	DESCRIPTION	DATE	REVISER	APPD



Recommended P.C. Board Layout

### Ordering Information

FDM 26 15 — M0 D S 1 XX XX X B  
 1 2 3 4 5 6 7 8 9 10 11

1 Category FDM—Machined pin D—SUB connector	2 Circuits 26	3 Distinction No. 15	4 Type M0—Male	5 Assembly Layout D—DIP	
6 Entry Angle S—180° Vertical	7 Plating 1—Gold Plated	8 Thickness of Plating 01—1μ* 03—03μ*	9 Color—Resin W1—White K6—Black	10 Packaging K—Tray L—Tube	11 Distinction Type B—Type B

Materials And Finish  
 Shell: Steel Material, Front Nickel Plated  
 Back Shell Tin Plated  
 Insulator: PBT Thermoplastic, UL 94V-0, Colour: Black  
 Contact Material: Brass /Gold Plated  
 Electrical Characteristic  
 Contact Current Rating: 5A  
 Contact Resistance : 30mΩ Max  
 Dielectric Withstanding Voltage : 1000V AC r.m.s Min  
 Insulation Resistance: 5000 Megaohms Min.  
 Temperature Range—Operating: -55°C ~ +105°C

 THIRD ANGLE PROJECTION DESIGN UNITS Inch (metric) SCALE 5:1 SIZE A4	GENERAL TOLERANCES (UNLESS SPECIFIED)		APPROVE BY FRANK	DATE 23/JUL/13	PART NO. FDM2615—MODS1XXXXXB	ITEM NO. FDM2615	 Leader Of Industry	
	X.±.012(0.30)	X'.±5'	CHECKED BY CHERRY	DATE 23/JUL/13	TITLE Machined pin D—SUB connector 180° Vertical Male			REV 0
	X.XX±.008(0.20)	.X'±2'	DRAWN BY JACOB	DATE 23/JUL/13	THIS DRAWING CONTAINS INFORMATION THAT IS PROPRIETARY TO TXGA INDUSTRIAL ELECTRONICS(S.Z)CO.,LTD AND SHOULD NOT BE USED WITHOUT WRITTEN PERMISSION			
	X.XX±.006(0.15)	.XX'±1'						
X.XXX±.004(0.10)	.XXX'±0.5'							