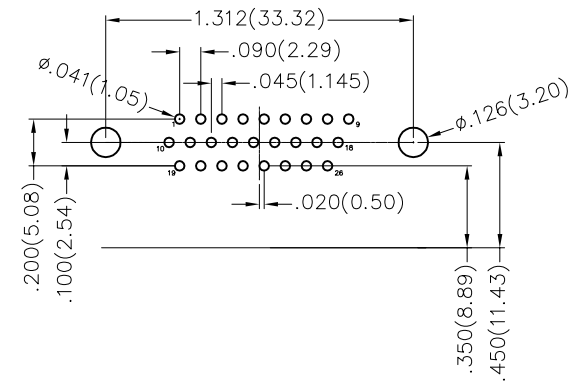
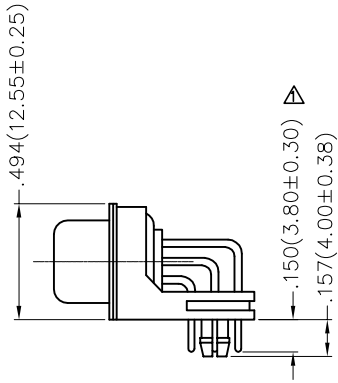
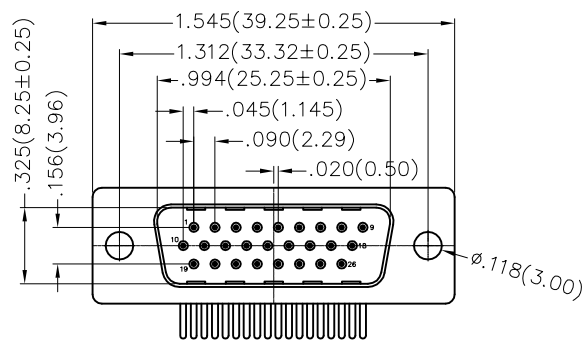
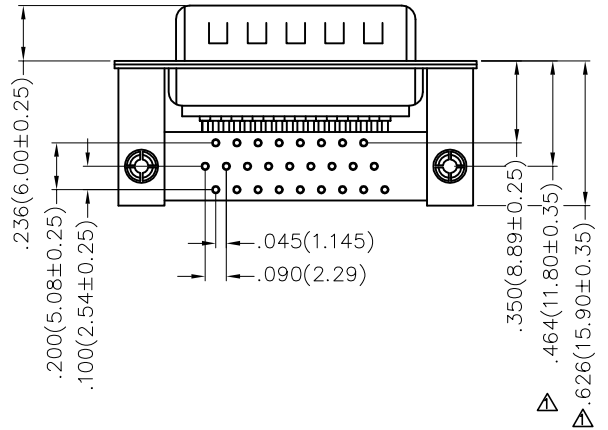


REV	LOCATIONS	DESCRIPTION	DATE	REVISER	APPD
1	△	Size changes	08/JUL/22	MATT	CHERRY



Recommended P.C.Board Layout



Ordering Information

FDM 26 25 — M0 D B 1 XX XX X A
 1 2 3 4 5 6 7 8 9 10 11

1	Category	2	Circuits	3	Distinction No.	4	Type	5	Assembly Layout		
	FDM—Machined pin D—SUB connector		26		25		M0—Male		D—DIP		
6	Entry Angle	7	Plating	8	Thickness of Plating	9	Color—Resin	10	Packaging	11	Distinction Type
	B—90° Angle		1—Gold Plated		01—1μ" 03—3μ" Custom plate available		W1—White K6—Black		K—Tray L—Tube		A—A Type

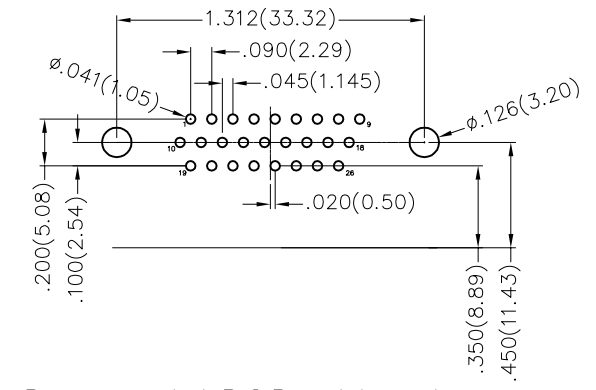
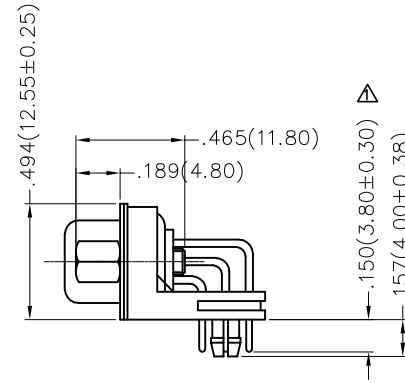
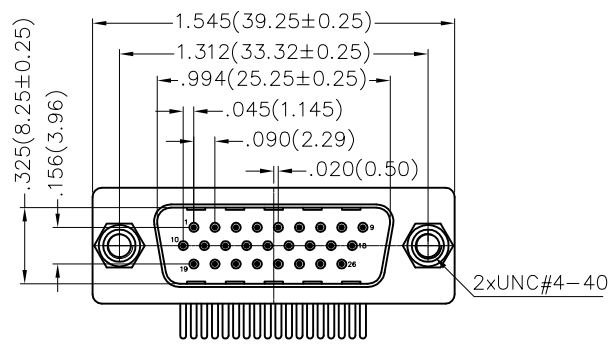
SPECIFICATION

Electrical
 Current Rating: 5A
 Voltage Rating: 300V
 Contact resistance: 30mΩ Max
 Insulation resistance: 5000MΩ Min. at 500V DC
 Dielectric Withstanding Voltage :1000V AC r.m.s Min
 Temperature Range—Operating: -55°C ~ +105°C

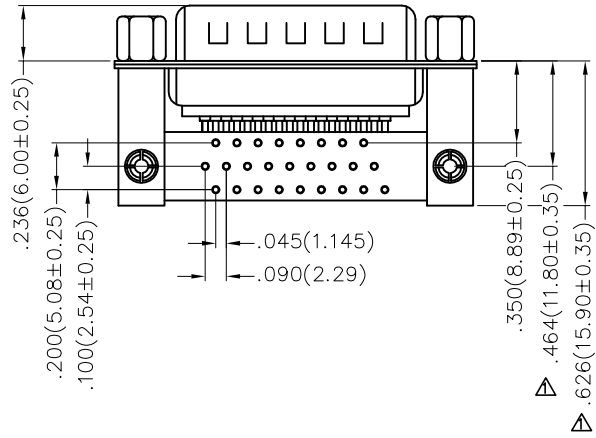
Material and Plating
 Insulator: PBT +30% G.F (UL94V-0)
 Contact: Brass/ Gold plated
 Shell: SPCC/ Front Nickel plated, Back Tin plated

 THIRD ANGLE PROJECTION	GENERAL TOLERANCES (UNLESS SPECIFIED)		APPROVE BY FRANK	DATE 09/SEP/19	PART NO. FDM2625—MODB1XXXXXA	ITEM NO. FDM2625	 Leader Of Industry
	DESIGN UNITS Inch (metric)	X.±.012(0.30) X.X±.008(0.20)	X'±5' .X'±2'	CHECKED BY CHERRY	DATE 09/SEP/19	TITLE Machined pin D—SUB connector 90° Angle Male	
SCALE 5:1	SIZE A4	X.XX±.006(0.15) X.XXX±.004(0.10)	.XX'±1' .XX'±0.5'	DRAWN BY KATE	DATE 09/SEP/19	THIS DRAWING CONTAINS INFORMATION THAT IS PROPRIETARY TO TXGA INDUSTRIAL ELECTRONICS(S.Z)CO.,LTD AND SHOULD NOT BE USED WITHOUT WRITTEN PERMISSION	

REV	LOCATIONS	DESCRIPTION	DATE	REVISER	APPD
1	△	Size changes	08/JUL/22	MATT	CHERRY



Recommended P.C. Board Layout



Ordering Information

FDM	26	25	—	M0	D	B	1	XX	XX	X	B
1	2	3	4	5	6	7	8	9	10	11	

1	Category	2	Circuits	3	Distinction No.	4	Type	5	Assembly Layout		
	FDM—Machined pin D—SUB connector		26		25		M0—Male		D—DIP		
6	Entry Angle	7	Plating	8	Thickness of Plating	9	Color—Resin	10	Packaging	11	Distinction Type
	B—90° Angle		1—Gold Plated		01—1μ" 03—3μ" Custom plate available		W1—White K6—Black		K—Tray L—Tube		B—B Type

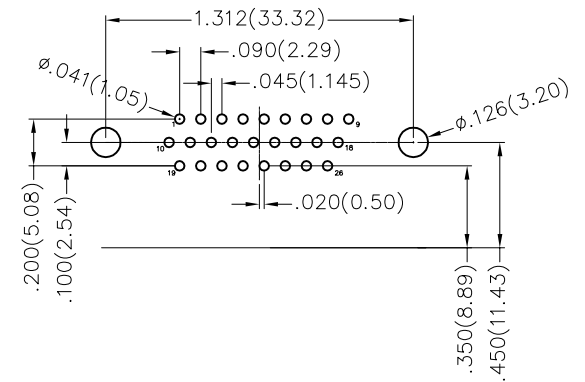
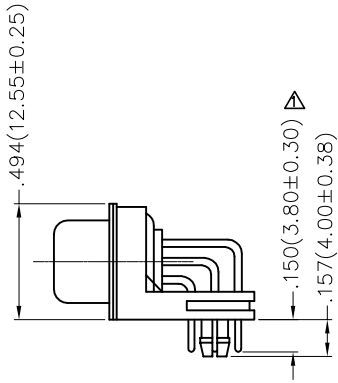
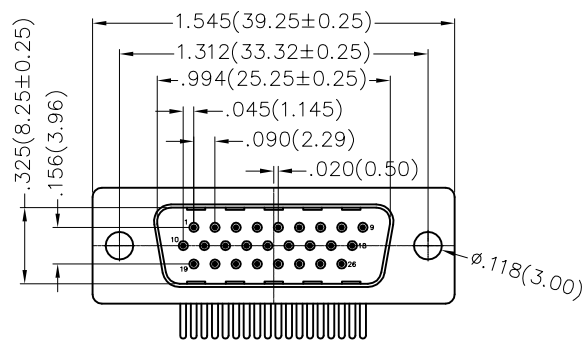
SPECIFICATION

Electrical
 Current Rating: 5A
 Voltage Rating: 300V
 Contact resistance: 30mΩ Max
 Insulation resistance: 5000MΩ Min. at 500V DC
 Dielectric Withstanding Voltage :1000V AC r.m.s Min
 Temperature Range—Operating: -55°C ~ +105°C

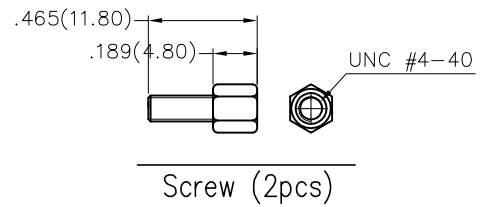
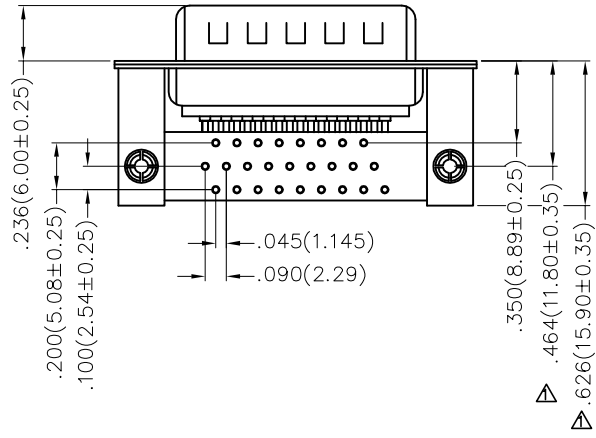
Material and Plating
 Insulator: PBT +30% G.F (UL94V-0)
 Contact: Brass/ Gold plated
 Shell: SPCC/ Front Nickel plated, Back Tin plated

<p>THIRD ANGLE PROJECTION</p>	GENERAL TOLERANCES (UNLESS SPECIFIED)		APPROVE BY	DATE	PART NO.	ITEM NO.	<p>Leader Of Industry</p>
	X.±.012(0.30)	X.±5°	FRANK	09/SEP/19	FDM2625—MODB1XXXXXB	FDM2625	
DESIGN UNITS Inch (metric)	X.X±.008(0.20)	.X±2'	CHECKED BY	DATE	TITLE		
SCALE 5:1	X.XX±.006(0.15)	.XX±1'	CHERRY	09/SEP/19	Machined pin D—SUB connector 90° Angle Male	REV 1	SHEET NO. 1/1
SIZE A4	X.XXX±.004(0.10)	.XXX±0.5'	DRAWN BY	DATE	THIS DRAWING CONTAINS INFORMATION THAT IS PROPRIETARY TO TXGA INDUSTRIAL ELECTRONICS(S.Z)CO.,LTD AND SHOULD NOT BE USED WITHOUT WRITTEN PERMISSION		
			KATE	09/SEP/19			

REV	LOCATIONS	DESCRIPTION	DATE	REVISER	APPD
1	△	Size changes	08/JUL/22	MATT	CHERRY



Recommended P.C.Board Layout



Ordering Information


FDM 26 25 — M0 D B 1 XX XX X C
 1 2 3 4 5 6 7 8 9 10 11

1	Category	2	Circuits	3	Distinction No.	4	Type	5	Assembly Layout		
	FDM—Machined pin D—SUB connector		26		25		M0—Male		D—DIP		
6	Entry Angle	7	Plating	8	Thickness of Plating	9	Color—Resin	10	Packaging	11	Distinction Type
	B—90° Angle		1—Gold Plated		01—1μ" 03—3μ" Custom plate available		W1—White K6—Black		K—Tray L—Tube		C—C Type

SPECIFICATION

Electrical
 Current Rating: 5A
 Voltage Rating: 300V
 Contact resistance: 30mΩ Max
 Insulation resistance: 5000MΩ Min. at 500V DC
 Dielectric Withstanding Voltage :1000V AC r.m.s Min
 Temperature Range—Operating: -55°C ~ +105°C

Material and Plating
 Insulator: PBT +30% G.F (UL94V-0)
 Contact: Brass/ Gold plated
 Shell: SPCC/ Front Nickel plated, Back Tin plated

THIRD ANGLE PROJECTION	GENERAL TOLERANCES (UNLESS SPECIFIED)		APPROVE BY	DATE	PART NO.	ITEM NO.	 Leader Of Industry
	X.±.012(0.30)	X.±5°	FRANK	09/SEP/19	FDM2625—MODB1XXXXXC	FDM2625	
DESIGN UNITS Inch (metric)	X.XX±.008(0.20)	.X'±2'	CHECKED BY	DATE	TITLE	REV 1 SHEET NO. 1/1	
SCALE 5:1	X.XX±.006(0.15)	.XX'±1'	KATE	09/SEP/19	Machined pin D—SUB connector 90° Angle Male	THIS DRAWING CONTAINS INFORMATION THAT IS PROPRIETARY TO TXGA INDUSTRIAL ELECTRONICS(S.Z)CO.,LTD AND SHOULD NOT BE USED WITHOUT WRITTEN PERMISSION	
SIZE A4	X.XXX±.004(0.10)	.XXX'±0.5'					