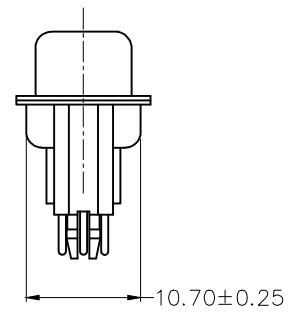
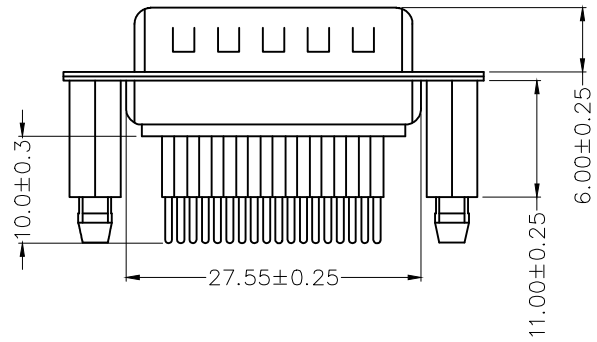
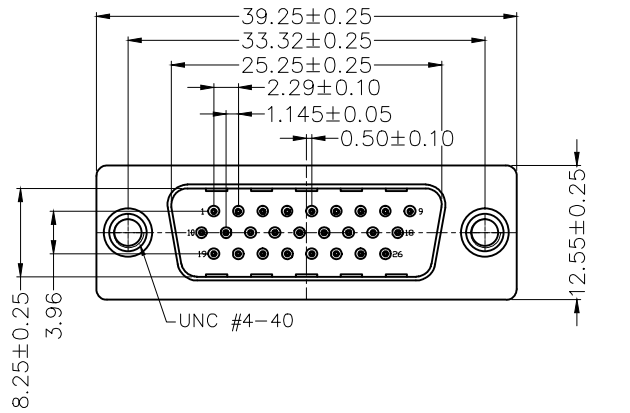


1 2 3 4 5 6 7 8

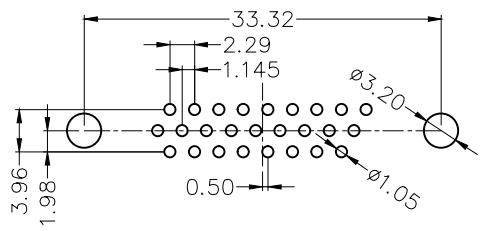
REV	LOCATIONS	DESCRIPTION	DATE	REVISER	APPD



SPECIFICATION

Electrical
 Current Rating: 5A
 Voltage Rating: 500V
 Contact resistance: 30 mΩ Max
 Insulation resistance: 5000 MΩ Min. at 500V DC
 Dielectric Withstanding Voltage : 500V AC r.m.s Min
 Temperature Range—Operating: -55°C ~ +105°C

Material and Plating
 Insulator: PBT+30%GF (UL94 V-0)
 Contact: Brass/ Gold plated
 Front Shell: SPCC/ Nickel plated
 Back Shell: SPCC/ Tin plated



Recommended P.C.Board Layout
 General tolerances: ±0.05

Ordering Information

FDM 26 26 — M0 D S 1 XX XX K A
 1 2 3 4 5 6 7 8 9 10 11

1	Category FDM—Machined pin D—SUB connector	2	Circuits 26	3	Distinction No. 26	4	Type M0—Male	5	Assembly Layout D—DIP	6	Entry Angle S—180° Vertical
7	Plating 1—Gold plated	8	Thickness of Plating 01—0.025µm 03—0.075µm Custom plate available	9	Color—Resin WH—White BK—Black	10	Packaging K—Tray	11	Distinction Type A—A Type		

 THIRD ANGLE PROJECTION	GENERAL TOLERANCES (UNLESS SPECIFIED)		APPROVE BY FRANK	DATE 11/MAR/21	PART NO. FDM2626—MODS1XXXXKA	ITEM NO. FDM2626	 Leader Of Industry		
	X. ±0.30	X.' ±5'	CHECKED BY CHERRY	DATE 11/MAR/21	TITLE Machined pin D—SUB connector 180° Vertical Male			REV 0	SHEET NO. 1/1
	DESIGN UNITS Metric	X.X ±0.20	X.X' ±2'	DRAWN BY KATE	DATE 11/MAR/21	THIS DRAWING CONTAINS INFORMATION THAT IS PROPRIETARY TO TXGA INDUSTRIAL ELECTRONICS(S.Z)CO.,LTD AND SHOULD NOT BE USED WITHOUT WRITTEN PERMISSION			
SCALE 5:1	SIZE A4	X.XX ±0.15	X.XX' ±1'						
		X.XXX ±0.10	X.XXX' ±0.5'						

1 2 3 4 5 6 7 8