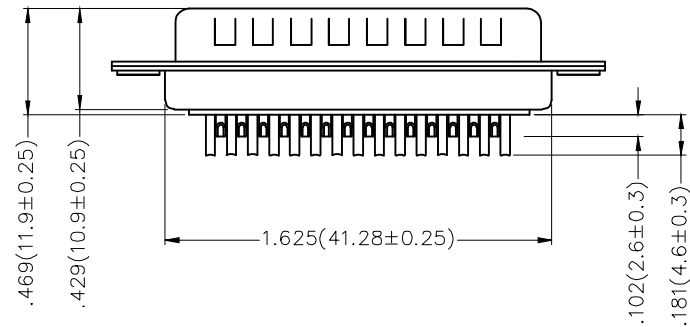
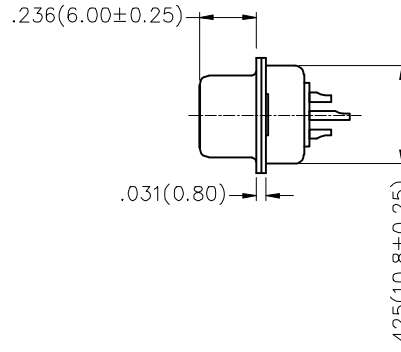
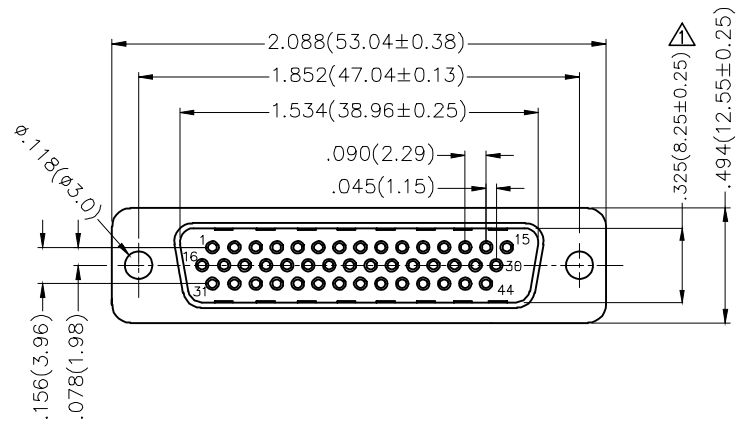


REV	LOCATIONS	DESCRIPTION	DATE	REVISER	APPD
1	△	Size changes	09/AUG/21	KATE	CHERRY




Ordering Information

FDM 44 11 — MO W S 1 XX XX X
 1 2 3 4 5 6 7 8 9 10

1 Category FDM—Machined pin D—SUB connector	2 Circuits 44	3 Distinction No. 11	4 Type MO—Male	5 Assembly Layout W—Welding Type
6 Entry Angle S—180° Vertical	7 Plating 1—Gold Plated	8 Thickness of Plating 01—1μ" 03—03μ" Custom plate available	9 Color—Resin W1—White K6—Black	10 Packaging K—Tray L—Tube

Materials And Finish
 Shell: Steel Material, Front Nickel Plated
 Back Shell Tin Plated
 Insulator: PBT Thermoplastic, UL 94V-0
 Contact Material: Brass /Gold Plated
 Electrical Characteristic
 Contact Current Rating: 5.0A
 Contact Resistance : 30 Milliohms Max
 Dielectric Withstanding Voltage : 500V AC r.m.s Min
 Insulation Resistance: 5000 Megaohms Min.
 Temperature Range—Operating: -55°C ~ +105°C

THIRD ANGLE PROJECTION	GENERAL TOLERANCES (UNLESS SPECIFIED)		APPROVE BY FRANK	DATE 23/JUL/13	PART NO. FDM4411—MOWS1XXXXX	ITEM NO. FDM4411—MO	 Leader Of Industry	
	DESIGN UNITS Inch (metric)	X.±.012(0.30) X.X±.008(0.20) X.XX±.006(0.15) X.XXX±.004(0.10)	.X'±5' .X'±2' .XX'±1' .XXX'±0.5'	CHECKED BY CHERRY	DATE 23/JUL/13	TITLE Machined pin D—SUB connector 180° Vertical Male		REV 1
SCALE 5:1	SIZE A4	DRAWN BY JACOB		DATE 23/JUL/13	THIS DRAWING CONTAINS INFORMATION THAT IS PROPRIETARY TO TXGA INDUSTRIAL ELECTRONICS(S.Z)CO.,LTD AND SHOULD NOT BE USED WITHOUT WRITTEN PERMISSION			