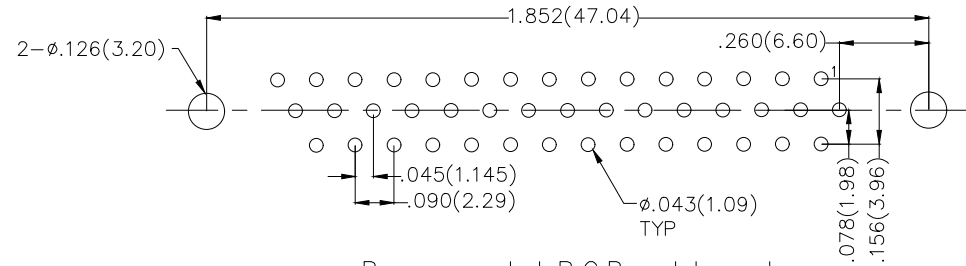
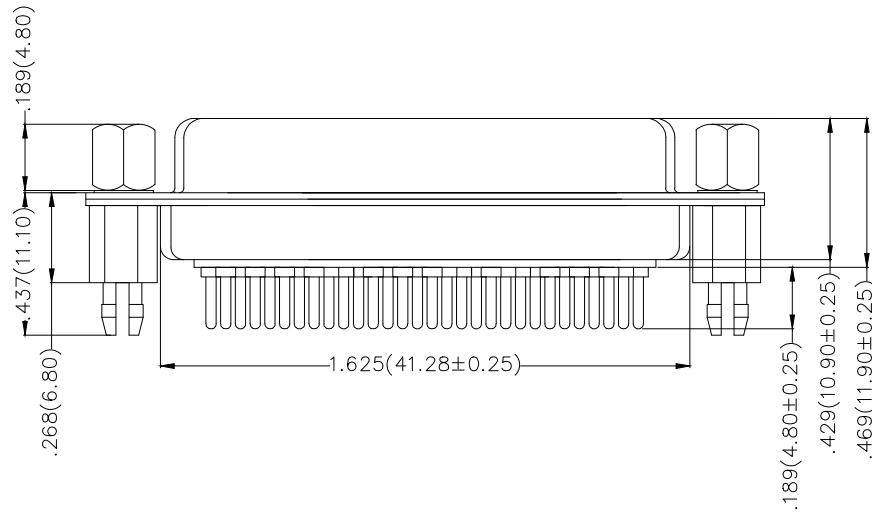
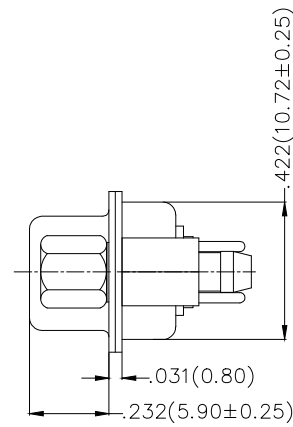
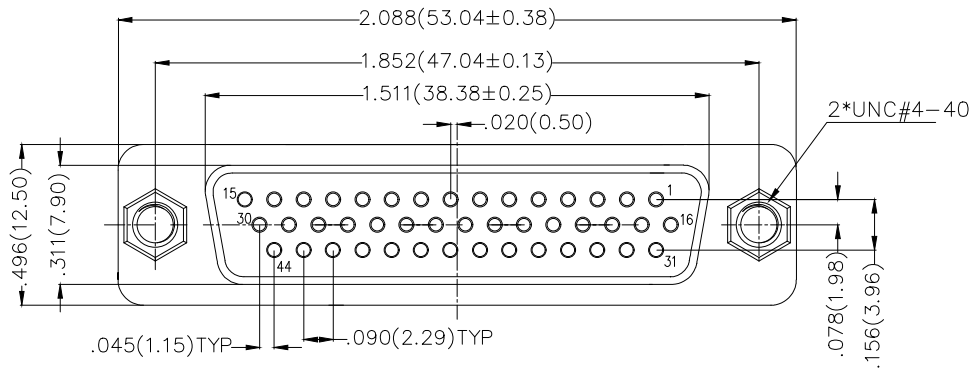


REV	LOCATIONS	DESCRIPTION	DATE	REVISER	APPD



Recommended P.C.Board Layout

Ordering Information

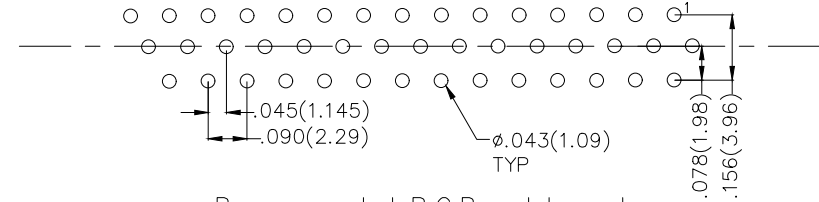
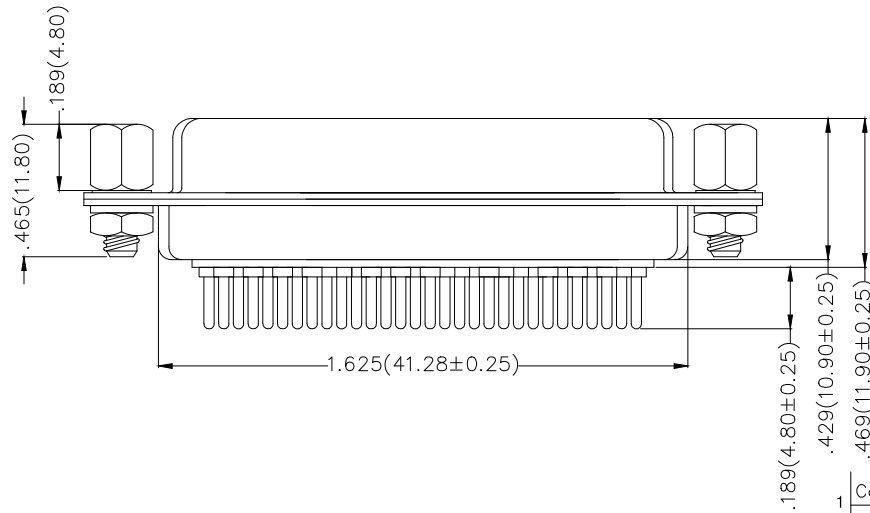
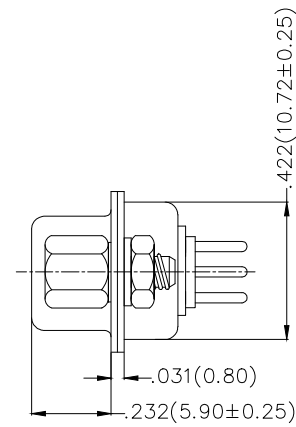
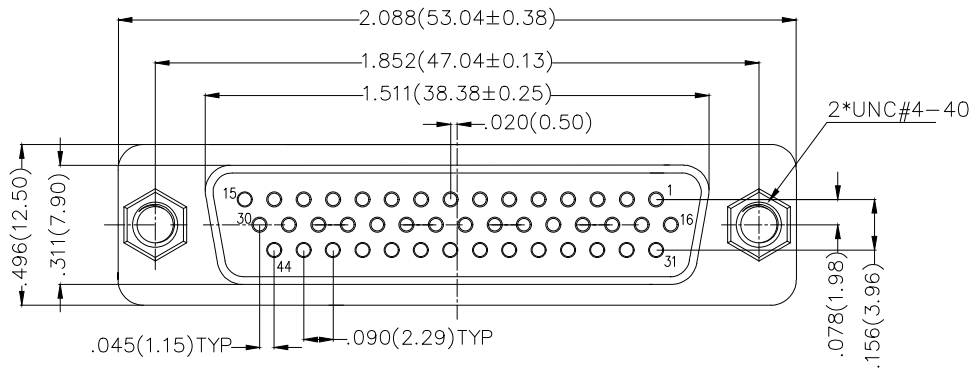
FDM 44 15 — F0 D S 1 XX XX X
 1 2 3 4 5 6 7 8 9 10

1 Category FDM—Machined pin D—SUB connector	2 Circuits 44	3 Distinction No. 15	4 Type F0—Female	5 Assembly Layout D—DIP
6 Entry Angle S—180° Vertical	7 Plating 1—Gold Plated	8 Thickness of Plating 01—1μ" 03—03μ"	9 Color—Resin W1—White K6—Black	10 Packaging K—Tray L—Tube

Materials And Finish
 Shell: Steel Material, Front Nickel Plated
 Back Shell Tin Plated
 Insulator: PBT Thermoplastic, UL 94V-0, Colour: Black
 Contact Material: Brass /Gold Plated
 Electrical Characteristic
 Contact Current Rating: 5A
 Contact Resistance : 30mΩ Max
 Dielectric Withstanding Voltage : 1000V AC r.m.s Min
 Insulation Resistance: 5000 Megaohms Min.
 Temperature Range—Operating: -55°C ~ +105°C

 THIRD ANGLE PROJECTION DESIGN UNITS Inch (metric) SCALE 5:1 SIZE A4	GENERAL TOLERANCES (UNLESS SPECIFIED)		APPROVE BY FRANK	DATE 23/JUL/16	PART NO. FDM4415—FODS1XXXXX	ITEM NO. FDM4415	 Leader Of Industry	
	X.±.012(0.30)	.X'±5'	CHECKED BY JACOB	DATE 23/JUL/16	TITLE Machined pin D—SUB connector 180° Vertical Female			REV 0
	X.XX±.008(0.20)	.X'±2'	DRAWN BY CHERRY	DATE 23/JUL/16	THIS DRAWING CONTAINS INFORMATION THAT IS PROPRIETARY TO TXGA INDUSTRIAL ELECTRONICS(S.Z)CO.,LTD AND SHOULD NOT BE USED WITHOUT WRITTEN PERMISSION			
	X.XX±.006(0.15)	.XX'±1'						
	X.XXX±.004(0.10)	.XXX'±0.5'						

REV	LOCATIONS	DESCRIPTION	DATE	REVISER	APPD



Recommended P.C.Board Layout

Ordering Information

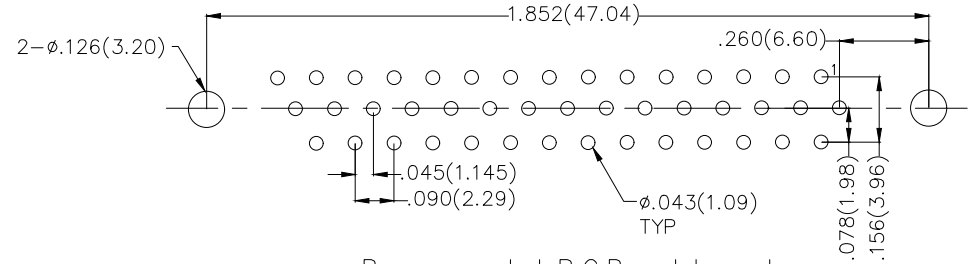
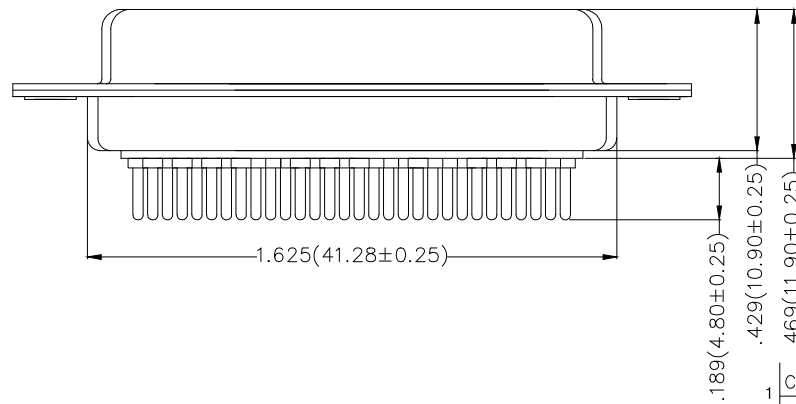
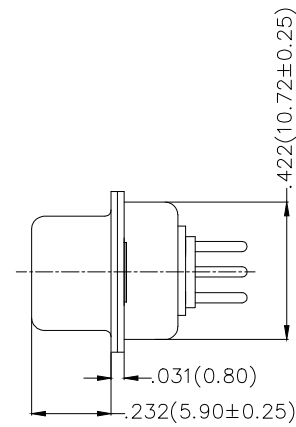
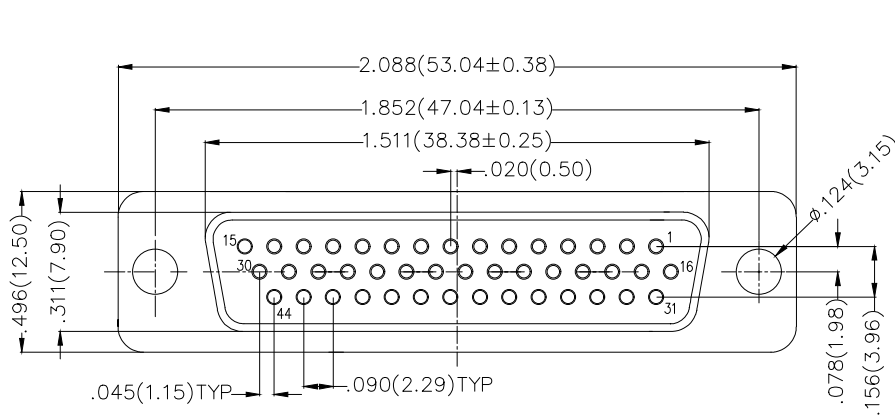
FDM 44 15 — F0 D S 1 XX XX X A
 1 2 3 4 5 6 7 8 9 10 11

1	Category	2	Circuits	3	Distinction No.	4	Type	5	Assembly Layout		
	FDM-Machined pin D-SUB connector		44		15		F0-Female		D-DIP		
6	Entry Angle	7	Plating	8	Thickness of Plating	9	Color-Resin	10	Packaging	11	Distinction Type
	S-180° Vertical		1-Gold Plated		01-1µ" 03-03µ"		W1-White K6-Black		K-Tray L-Tube		A-Type A

Materials And Finish
 Shell: Steel Material, Front Nickel Plated
 Back Shell Tin Plated
 Insulator: PBT Thermoplastic, UL 94V-0, Colour: Black
 Contact Material: Brass /Gold Plated
 Electrical Characteristic
 Contact Current Rating: 5A
 Contact Resistance : 30mΩ Max
 Dielectric Withstanding Voltage : 1000V AC r.m.s Min
 Insulation Resistance: 5000 Megaohms Min.
 Temperature Range-Operating: -55°C ~ +105°C

 THIRD ANGLE PROJECTION DESIGN UNITS Inch (metric) SCALE 5:1 SIZE A4	GENERAL TOLERANCES (UNLESS SPECIFIED)		APPROVE BY	DATE	PART NO.	ITEM NO.	 Leader Of Industry
	X.±.012(0.30)	.X'±5'	FRANK	23/JUL/13	FDM4415-F0DS1XXXXXA	FDM4415	
	X.X±.008(0.20)	.X'±2'	CHECKED BY	DATE	TITLE		REV 0
	X.XX±.006(0.15)	.XX'±1'	CHERRY	23/JUL/13	Machined pin D-SUB connector 180° Vertical Female		SHEET NO. 1/1
	X.XXX±.004(0.10)	.XXX'±0.5'	DRAWN BY	DATE	THIS DRAWING CONTAINS INFORMATION THAT IS PROPRIETARY TO TXGA INDUSTRIAL ELECTRONICS(S.Z)CO.,LTD AND SHOULD NOT BE USED WITHOUT WRITTEN PERMISSION		
			JACOB	23/JUL/13			

REV	LOCATIONS	DESCRIPTION	DATE	REVISER	APPD




Recommended P.C.Board Layout

Ordering Information

FDM 44 15 - F0 D S 1 XX XX X B
 1 2 3 4 5 6 7 8 9 10 11

1 Category FDM-Machined pin D-SUB connector	2 Circuits 44	3 Distinction No. 15	4 Type F0-Female	5 Assembly Layout D-DIP
6 Entry Angle S-180° Vertical	7 Plating 1-Gold Plated	8 Thickness of Plating 01-1μ" 03-03μ"	9 Color-Resin W1-White K6-Black	10 Packaging K-Tray L-Tube
			11 Distinction Type B-Type B	

Materials And Finish
 Shell: Steel Material, Front Nickel Plated
 Back Shell Tin Plated
 Insulator: PBT Thermoplastic, UL 94V-0, Colour: Black
 Contact Material: Brass /Gold Plated
 Electrical Characteristic
 Contact Current Rating: 5A
 Contact Resistance : 30mΩ Max
 Dielectric Withstanding Voltage : 1000V AC r.m.s Min
 Insulation Resistance: 5000 Megaohms Min.
 Temperature Range-Operating: -55°C ~ +105°C

THIRD ANGLE PROJECTION	GENERAL TOLERANCES (UNLESS SPECIFIED)		APPROVE BY	DATE	PART NO.	ITEM NO.	 Leader Of Industry
	DESIGN UNITS Inch (metric)	X.±.012(0.30)	X'.±5'	FRANK	23/JUL/13	FDM4415-F0DS1XXXXXB	
SCALE 5:1	X.XX±.008(0.20)	.X'±2'	CHECKED BY CHERRY	DATE 23/JUL/13	TITLE Machined pin D-SUB connector 180° Vertical Female		REV 0 SHEET NO. 1/1
SIZE A4	X.XX±.006(0.15)	.XX'±1'	DRAWN BY JACOB	DATE 23/JUL/13	THIS DRAWING CONTAINS INFORMATION THAT IS PROPRIETARY TO TXGA INDUSTRIAL ELECTRONICS(S.Z)CO.,LTD AND SHOULD NOT BE USED WITHOUT WRITTEN PERMISSION		
	X.XXX±.004(0.10)	.XXX'±0.5'					