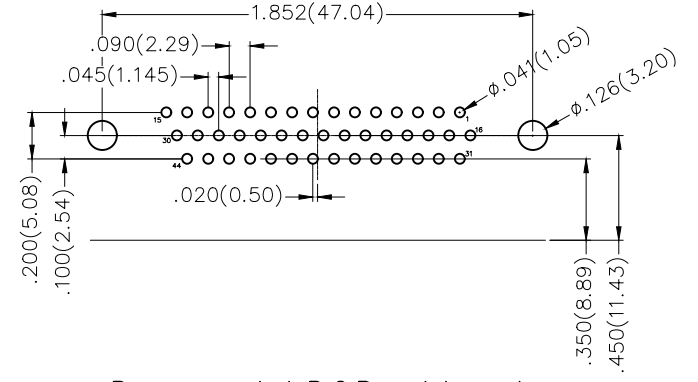
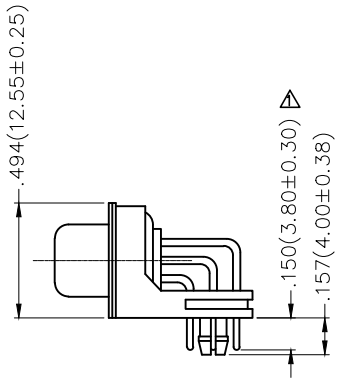
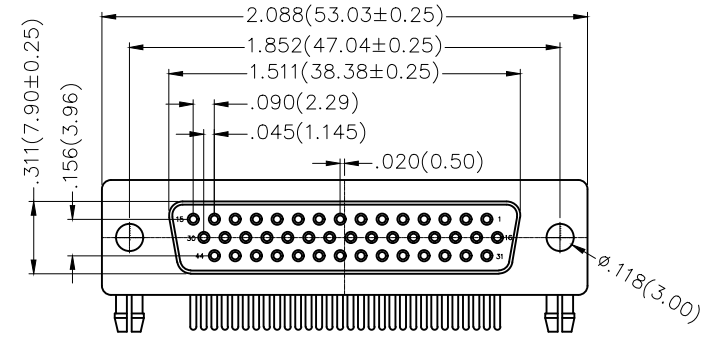
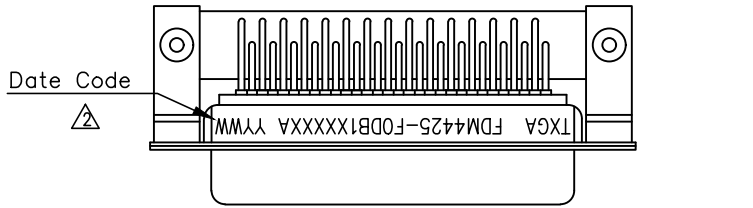
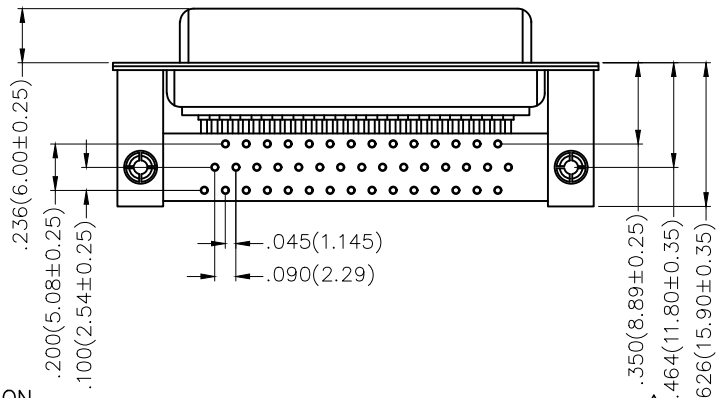


REV	LOCATIONS	DESCRIPTION	DATE	REVISER	APPD
1	△	Size changes	13/JUL/22	MATT	CHERRY
2	△	Add marking code	13/Jan/25	NICK	LEO



Recommended P.C.Board Layout



Ordering Information

FDM 44 25 — F0 D B 1 XX XX X A
 1 2 3 4 5 6 7 8 9 10 11

SPECIFICATION

Electrical

Current Rating: 5A
 Voltage Rating: 300V
 Contact resistance: 30mΩ Max
 Insulation resistance: 5000MΩ Min. at 500V DC
 Dielectric Withstanding Voltage :1000V AC r.m.s Min
 Temperature Range-Operating: -55°C ~ +105°C

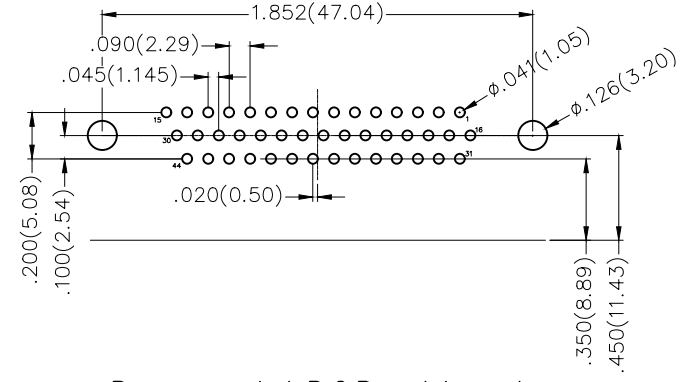
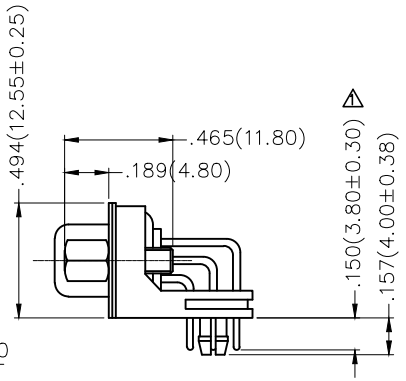
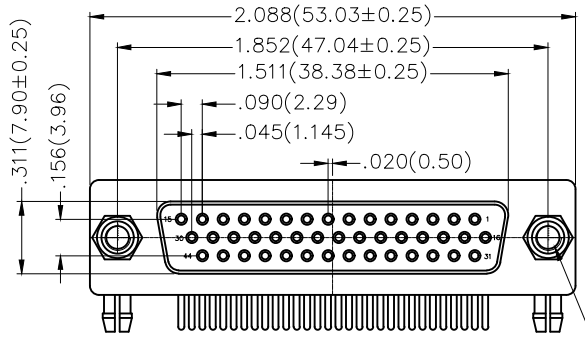
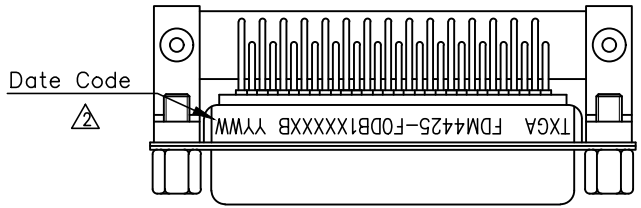
Material and Plating

Insulator: PBT +30% G.F (UL94V-0)
 Contact: Brass/ Gold plated
 Shell: SPCC/ Front Nickel plated, Back Tin plated

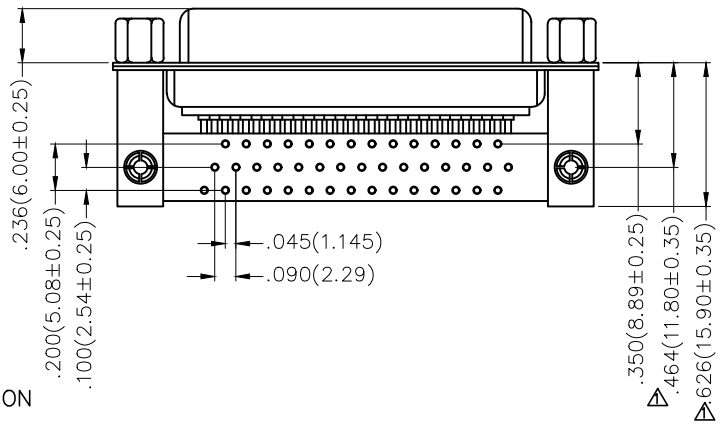
1	Category	2	Circuits	3	Distinction No.	4	Type	5	Assembly Layout		
	FDM-Machined pin D-SUB connector		44		25		F0-Female		D-DIP		
6	Entry Angle	7	Plating	8	Thickness of Plating	9	Color-Resin	10	Packaging	11	Distinction Type
	B-90° Angle		1-Gold Plated		01-1μ" 03-3μ" Custom plate available		W1-White K6-Black		K-Tray L-Tube		A-A Type

 THIRD ANGLE PROJECTION	GENERAL TOLERANCES (UNLESS SPECIFIED)		APPROVE BY	DATE	PART NO.	ITEM NO.	 Leader Of Industry
	X.±.012(0.30)	X.±5'	FRANK	09/SEP/19	FDM4425-F0DB1XXXXX	FDM4425	
DESIGN UNITS Inch (metric)	X.X±.008(0.20)	.X'±2'	CHECKED BY	DATE	TITLE		REV 2 SHEET NO. 1/1
SCALE 5:1	X.XX±.006(0.15)	.XX'±1'	CHERRY	09/SEP/19	Machined pin D-SUB connector 90° Angle Female		
SIZE A4	X.XXX±.004(0.10)	.XXX'±0.5'	DRAWN BY	DATE	THIS DRAWING CONTAINS INFORMATION THAT IS PROPRIETARY TO TXGA INDUSTRIAL ELECTRONICS(S.Z)CO.,LTD AND SHOULD NOT BE USED WITHOUT WRITTEN PERMISSION		
			KATE	09/SEP/19			

REV	LOCATIONS	DESCRIPTION	DATE	REVISER	APPD
1	△	Size changes	13/JUL/22	MATT	CHERRY
2	△	Add marking code	13/Jan/25	NICK	LEO



Recommended P.C.Board Layout



Ordering Information

FDM 44 25 - F0 D B 1 XX XX X B
 1 2 3 4 5 6 7 8 9 10 11

SPECIFICATION

Electrical

Current Rating: 5A
 Voltage Rating: 300V
 Contact resistance: 30mΩ Max
 Insulation resistance: 5000MΩ Min. at 500V DC
 Dielectric Withstanding Voltage :1000V AC r.m.s Min
 Temperature Range-Operating: -55°C ~ +105°C

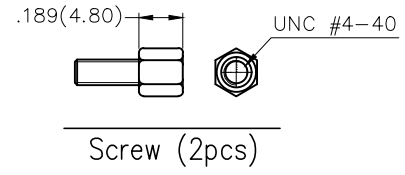
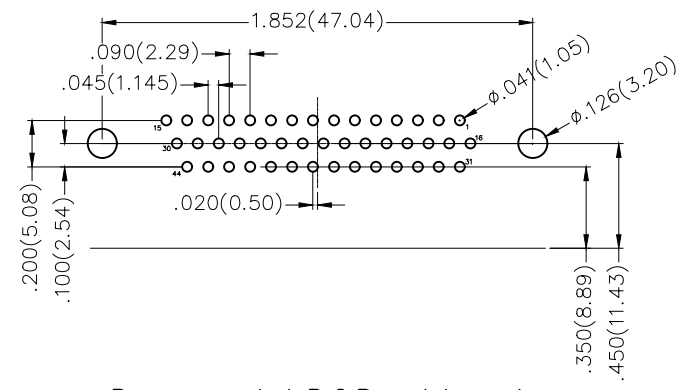
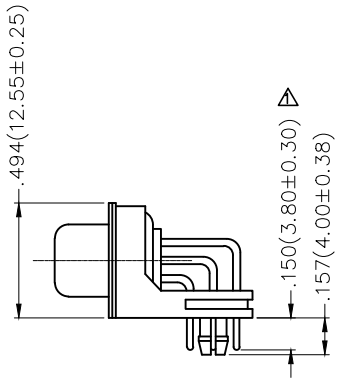
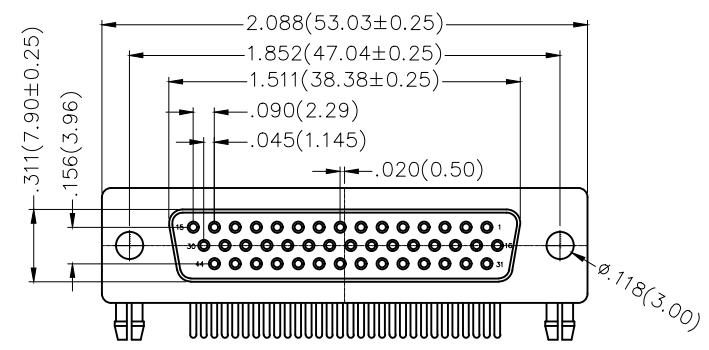
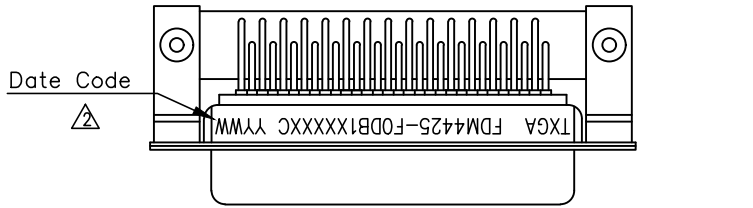
Material and Plating

Insulator: PBT +30% G.F (UL94V-0)
 Contact: Brass/ Gold plated
 Shell: SPCC/ Front Nickel plated, Back Tin plated

1	Category	2	Circuits	3	Distinction No.	4	Type	5	Assembly Layout		
	FDM-Machined pin D-SUB connector		44		25		F0-Female		D-DIP		
6	Entry Angle	7	Plating	8	Thickness of Plating	9	Color-Resin	10	Packaging	11	Distinction Type
	B-90° Angle		1-Gold Plated		01-1μ" 03-3μ" Custom plate available		W1-White K6-Black		K-Tray L-Tube		B-B Type

 THIRD ANGLE PROJECTION	GENERAL TOLERANCES (UNLESS SPECIFIED)		APPROVE BY	DATE	PART NO.	ITEM NO.	 Leader Of Industry
	X.±.012(0.30)	X.±5'	FRANK	09/SEP/19	FDM4425-F0DB1XXXXXB	FDM4425	
DESIGN UNITS Inch (metric)	X.X±.008(0.20)	.X±2'	CHECKED BY	DATE	TITLE		REV 2 SHEET NO. 1/1
SCALE 5:1	X.XX±.006(0.15)	.XX±1'	CHERRY	09/SEP/19	Machined pin D-SUB connector 90° Angle Female		
SIZE A4	X.XXX±.004(0.10)	.XXX±0.5'	DRAWN BY	DATE	THIS DRAWING CONTAINS INFORMATION THAT IS PROPRIETARY TO TXGA INDUSTRIAL ELECTRONICS(S.Z)CO.,LTD AND SHOULD NOT BE USED WITHOUT WRITTEN PERMISSION		
			KATE	09/SEP/19			

REV	LOCATIONS	DESCRIPTION	DATE	REVISER	APPD
1	△	Size changes	13/JUL/22	MATT	CHERRY
2	△	Add marking code	13/Jan/25	NICK	LEO



Recommended P.C.Board Layout

Ordering Information

FDM 44 25 - F0 D B 1 XX XX X C
1 2 3 4 5 6 7 8 9 10 11

1	Category	2	Circuits	3	Distinction No.	4	Type	5	Assembly Layout		
	FDM-Machined pin D-SUB connector		44		25		F0-Female		D-DIP		
6	Entry Angle	7	Plating	8	Thickness of Plating	9	Color-Resin	10	Packaging	11	Distinction Type
	B-90° Angle		1-Gold Plated		01-1μ" 03-3μ" Custom plate available		W1-White K6-Black		K-Tray L-Tube		C-C Type


SPECIFICATION

Electrical

Current Rating: 5A
Voltage Rating: 300V
Contact resistance: 30mΩ Max
Insulation resistance: 5000MΩ Min. at 500V DC
Dielectric Withstanding Voltage :1000V AC r.m.s Min
Temperature Range-Operating: -55°C ~ +105°C

Material and Plating

Insulator: PBT +30% G.F (UL94V-0)
Contact: Brass/ Gold plated
Shell: SPCC/ Front Nickel plated, Back Tin plated

THIRD ANGLE PROJECTION	GENERAL TOLERANCES (UNLESS SPECIFIED)		APPROVE BY	DATE	PART NO.	ITEM NO.	 Leader Of Industry
	X.±.012(0.30)	X.±5'	FRANK	09/SEP/19	FDM4425-F0DB1XXXXC	FDM4425	
DESIGN UNITS Inch (metric)	X.X±.008(0.20)	.X'±2'	CHECKED BY	DATE	TITLE		REV 2
SCALE 5:1	X.XX±.006(0.15)	.XX'±1'	CHERRY	09/SEP/19	Machined pin D-SUB connector 90° Angle Female		SHEET NO. 1/1
SIZE A4	X.XXX±.004(0.10)	.XXX'±0.5'	DRAWN BY	DATE	THIS DRAWING CONTAINS INFORMATION THAT IS PROPRIETARY TO TXGA INDUSTRIAL ELECTRONICS(S.Z)CO.,LTD AND SHOULD NOT BE USED WITHOUT WRITTEN PERMISSION		
			KATE	09/SEP/19			