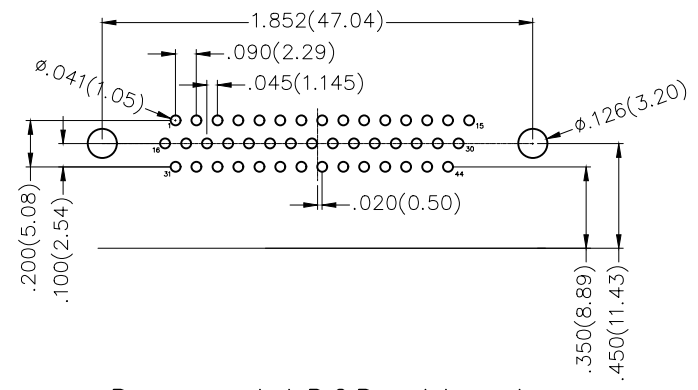
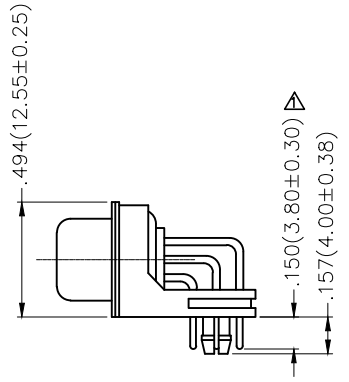
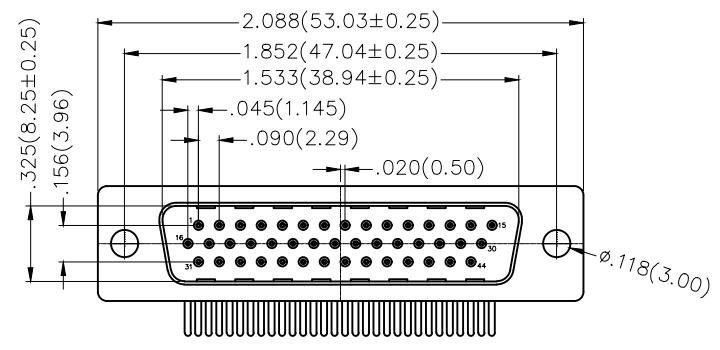
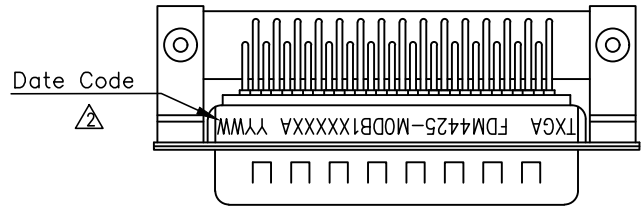
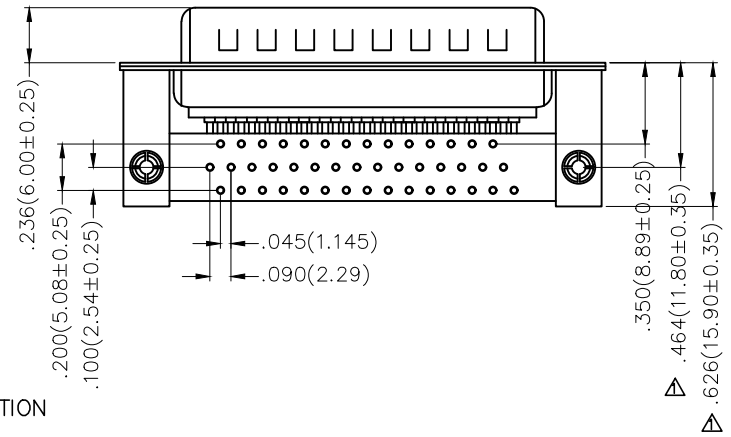


REV	LOCATIONS	DESCRIPTION	DATE	REVISER	APPD
1	△	Size changes	13/JUL/22	MATT	CHERRY
2	△	Add marking code	13/Jan/25	NICK	LEO



Recommended P.C.Board Layout



Ordering Information

FDM 44 25 - M0 D B 1 XX XX X A
 1 2 3 4 5 6 7 8 9 10 11


1 Category	2 Circuits	3 Distinction No.	4 Type	5 Assembly Layout
FDM-Machined pin D-SUB connector	44	25	M0-Male	D-DIP
6 Entry Angle	7 Plating	8 Thickness of Plating	9 Color-Resin	10 Packaging
B-90° Angle	1-Gold Plated	01-1μ" 03-3μ" Custom plate available	W1-White K6-Black	K-Tray L-Tube
				11 Distinction Type
				A-A Type

SPECIFICATION
Electrical

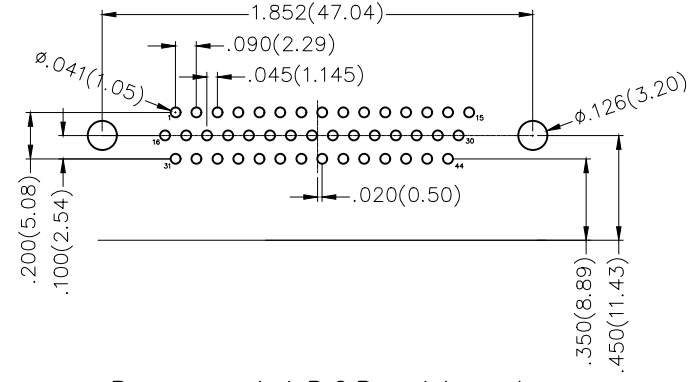
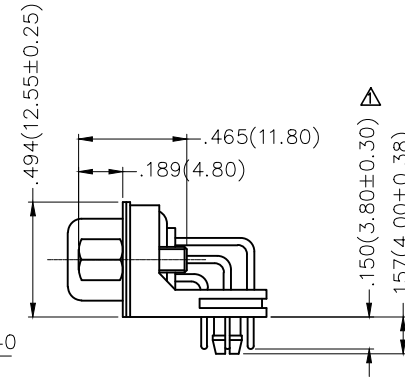
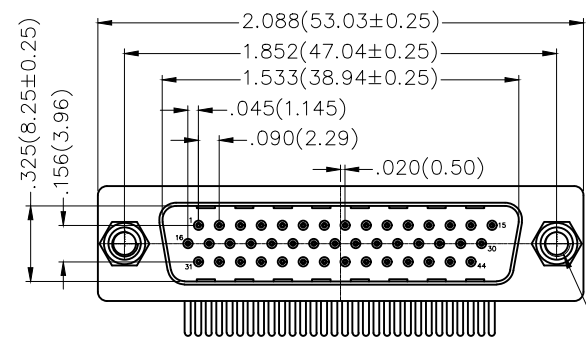
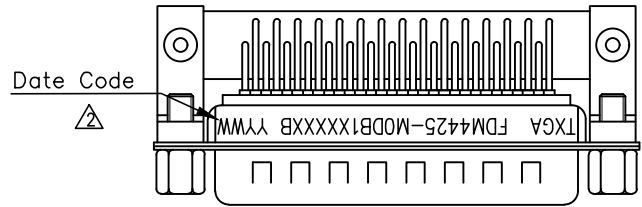
Current Rating: 5A
 Voltage Rating: 300V
 Contact resistance: 30mΩ Max
 Insulation resistance: 5000MΩ Min. at 500V DC
 Dielectric Withstanding Voltage: 1000V AC r.m.s Min
 Temperature Range-Operating: -55°C ~ +105°C

Material and Plating

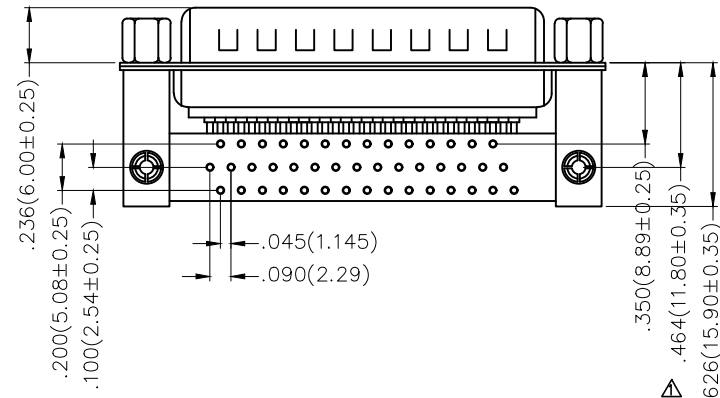
Insulator: PBT +30% G.F (UL94V-0)
 Contact: Brass/ Gold plated
 Shell: SPCC/ Front Nickel plated, Back Tin plated

THIRD ANGLE PROJECTION	GENERAL TOLERANCES (UNLESS SPECIFIED)		APPROVE BY	DATE	PART NO.	ITEM NO.	 Leader Of Industry
	X.±.012(0.30)	X.±5'	FRANK	09/SEP/19	FDM4425-MODB1XXXXXA	FDM4425	
DESIGN UNITS Inch (metric)	X.X±.008(0.20)	.X'±2'	CHECKED BY	DATE	TITLE		REV 2 SHEET NO. 1/1
SCALE 5:1	X.XX±.006(0.15)	.XX'±1'	CHERRY	09/SEP/19	Machined pin D-SUB connector 90° Angle Male		
	X.XXX±.004(0.10)	.XXX'±0.5'	DRAWN BY	DATE	THIS DRAWING CONTAINS INFORMATION THAT IS PROPRIETARY TO TXGA INDUSTRIAL ELECTRONICS(S.Z)CO.,LTD AND SHOULD NOT BE USED WITHOUT WRITTEN PERMISSION		
			KATE	09/SEP/19			

REV	LOCATIONS	DESCRIPTION	DATE	REVISER	APPD
1	△	Size changes	13/JUL/22	MATT	CHERRY
2	△	Add marking code	13/Jan/25	NICK	LEO



Recommended P.C.Board Layout



Ordering Information

FDM 44 25 - M0 D B 1 XX XX X B
 1 2 3 4 5 6 7 8 9 10 11

1 Category FDM-Machined pin D-SUB connector	2 Circuits 44	3 Distinction No. 25	4 Type M0-Male	5 Assembly Layout D-DIP	
6 Entry Angle B-90° Angle	7 Plating 1-Gold Plated	8 Thickness of Plating 01-1μ" 03-3μ" Custom plate available	9 Color-Resin W1-White K6-Black	10 Packaging K-Tray L-Tube	11 Distinction Type B-B Type

SPECIFICATION
Electrical

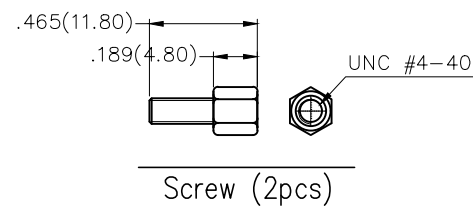
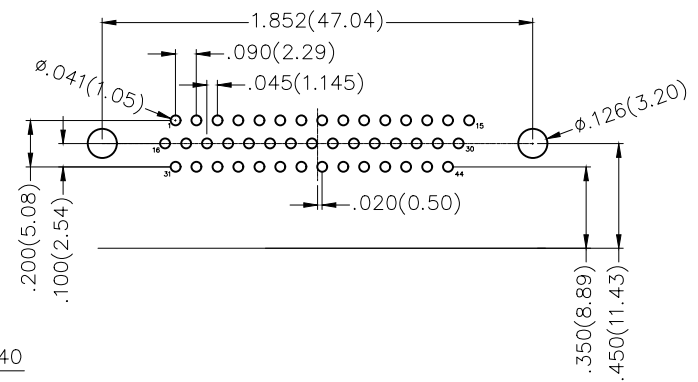
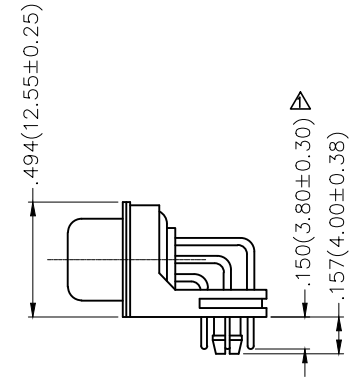
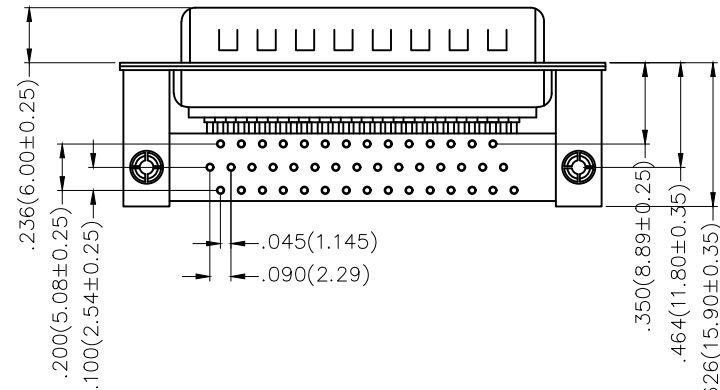
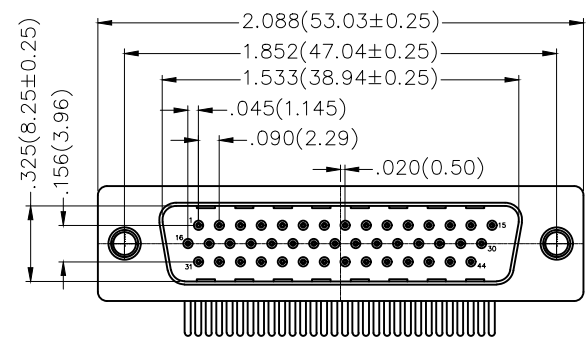
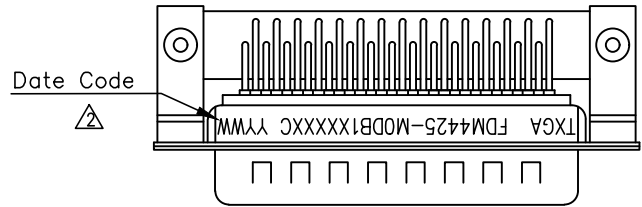
Current Rating: 5A
 Voltage Rating: 300V
 Contact resistance: 30mΩ Max
 Insulation resistance: 5000MΩ Min. at 500V DC
 Dielectric Withstanding Voltage: 1000V AC r.m.s Min
 Temperature Range-Operating: -55°C ~ +105°C

Material and Plating

Insulator: PBT +30% G.F (UL94V-0)
 Contact: Brass/ Gold plated
 Shell: SPCC/ Front Nickel plated, Back Tin plated

 THIRD ANGLE PROJECTION	GENERAL TOLERANCES (UNLESS SPECIFIED)		APPROVE BY FRANK	DATE 09/SEP/19	PART NO. FDM4425-MODB1XXXXXB	ITEM NO. FDM4425	 Leader Of Industry
	DESIGN UNITS Inch (metric)	X.±.012(0.30) X.X±.008(0.20)	X'.±5' .X'±2'	CHECKED BY CHERRY	DATE 09/SEP/19	TITLE Machined pin D-SUB connector 90° Angle Male	
SCALE 5:1	SIZE A4	X.XX±.006(0.15) X.XXX±.004(0.10)	DRAWN BY KATE	DATE 09/SEP/19	THIS DRAWING CONTAINS INFORMATION THAT IS PROPRIETARY TO TXGA INDUSTRIAL ELECTRONICS(S.Z)CO.,LTD AND SHOULD NOT BE USED WITHOUT WRITTEN PERMISSION		REV 2 SHEET NO. 1/1

REV	LOCATIONS	DESCRIPTION	DATE	REVISER	APPD
1	△	Size changes	13/JUL/22	MATT	CHERRY
2	△	Add marking code	13/Jan/25	NICK	LEO



Recommended P.C.Board Layout

Screw (2pcs)

Ordering Information

FDM 44 25 - M0 D B 1 XX XX X C
 1 2 3 4 5 6 7 8 9 10 11

1	Category	2	Circuits	3	Distinction No.	4	Type	5	Assembly Layout		
	FDM-Machined pin D-SUB connector		44		25		MO-Male		D-DIP		
6	Entry Angle	7	Plating	8	Thickness of Plating	9	Color-Resin	10	Packaging	11	Distinction Type
	B-90° Angle		1-Gold Plated		01-1μ" 03-3μ" Custom plate available		W1-White K6-Black		K-Tray L-Tube		C-C Type

SPECIFICATION
Electrical

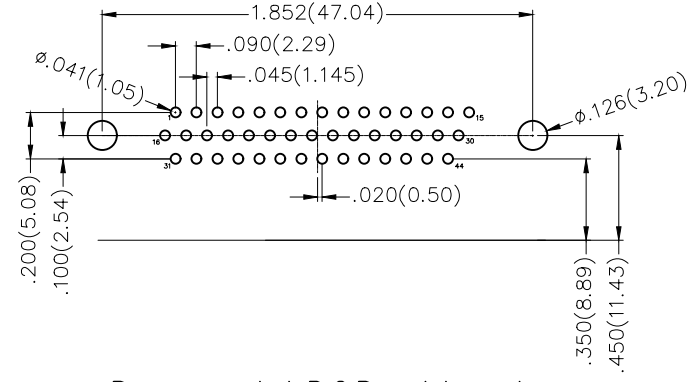
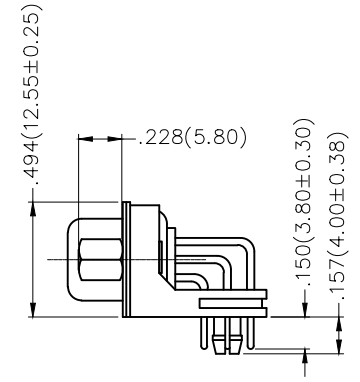
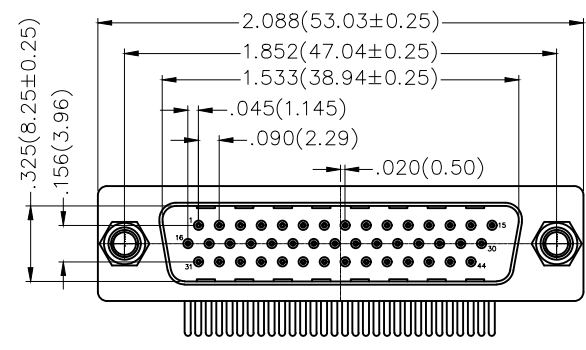
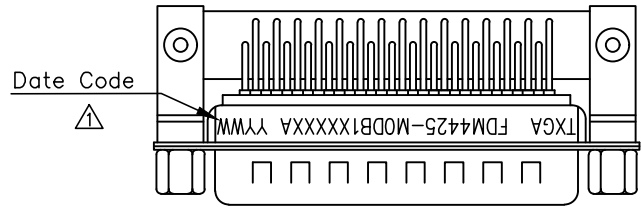
Current Rating: 5A
 Voltage Rating: 300V
 Contact resistance: 30mΩ Max
 Insulation resistance: 5000MΩ Min. at 500V DC
 Dielectric Withstanding Voltage: 1000V AC r.m.s Min
 Temperature Range-Operating: -55°C ~ +105°C

Material and Plating

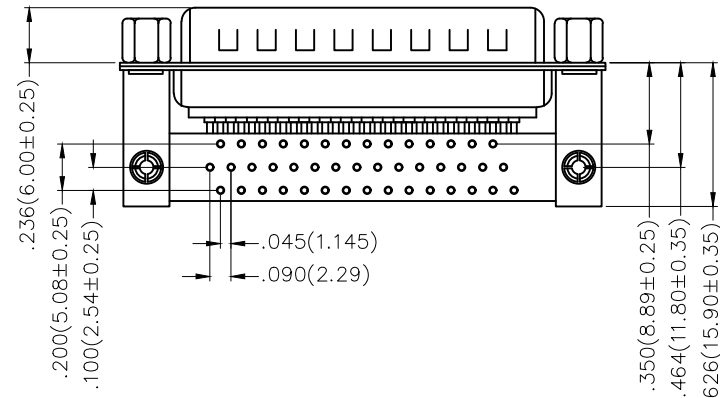
Insulator: PBT +30% G.F (UL94V-0)
 Contact: Brass/ Gold plated
 Shell: SPCC/ Front Nickel plated, Back Tin plated

 THIRD ANGLE PROJECTION	GENERAL TOLERANCES (UNLESS SPECIFIED)		APPROVE BY FRANK	DATE 09/SEP/19	PART NO. FDM4425-MODB1XXXXXC	ITEM NO. FDM4425	 Leader Of Industry	
	DESIGN UNITS Inch (metric)	X.±.012(0.30) X.X±.008(0.20)	X'.±5' .X'±2'	CHECKED BY CHERRY	DATE 09/SEP/19	TITLE Machined pin D-SUB connector 90° Angle Male		
SCALE 5:1	SIZE A4	X.XX±.006(0.15) X.XXX±.004(0.10)	DRAWN BY KATE	DATE 09/SEP/19	THIS DRAWING CONTAINS INFORMATION THAT IS PROPRIETARY TO TXGA INDUSTRIAL ELECTRONICS(S.Z)CO.,LTD AND SHOULD NOT BE USED WITHOUT WRITTEN PERMISSION		REV 2	SHEET NO. 1/1

REV	LOCATIONS	DESCRIPTION	DATE	REVISER	APPD
1	△	Add marking code	13/Jan/25	NICK	LEO



Recommended P.C.Board Layout



Ordering Information

FDM 44 25 — M0 D B 1 XX XX X D
 1 2 3 4 5 6 7 8 9 10 11

1 Category	2 Circuits	3 Distinction No.	4 Type	5 Assembly Layout	
FDM-Machined pin D-SUB connector	44	25	M0-Male	D-DIP	
6 Entry Angle	7 Plating	8 Thickness of Plating	9 Color-Resin	10 Packaging	11 Distinction Type
B-90° Angle	1-Gold Plated	01-1μ" 03-3μ" Custom plate available	W1-White K6-Black	K-Tray L-Tube	D-D Type

SPECIFICATION
Electrical

Current Rating: 5A
 Voltage Rating: 300V
 Contact resistance: 30mΩ Max
 Insulation resistance: 5000MΩ Min. at 500V DC
 Dielectric Withstanding Voltage :1000V AC r.m.s Min
 Temperature Range-Operating: -55°C ~ +105°C

Material and Plating

Insulator: PBT +30% G.F (UL94V-0)
 Contact: Brass/ Gold plated
 Shell: SPCC/ Front Nickel plated, Back Tin plated

 THIRD ANGLE PROJECTION	GENERAL TOLERANCES (UNLESS SPECIFIED)		APPROVE BY FRANK	DATE 09/SEP/19	PART NO. FDM4425-MODB1XXXXD	ITEM NO. FDM4425	 Building Technology Cornerstone
	DESIGN UNITS Inch (metric)	X.±.012(0.30) X.X±.008(0.20)	X'.±5' .X'±2'	CHECKED BY CHERRY	DATE 09/SEP/19	TITLE Machined pin D-SUB connector 90° Angle Male	
SCALE 5:1	SIZE A4	X.XX±.006(0.15) X.XXX±.004(0.10)	DRAWN BY NICK	DATE 09/SEP/19	THIS DRAWING CONTAINS INFORMATION THAT IS PROPRIETARY TO TXGA INDUSTRIAL ELECTRONICS(S.Z)CO.,LTD AND SHOULD NOT BE USED WITHOUT WRITTEN PERMISSION		