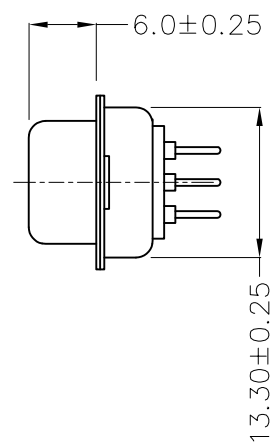
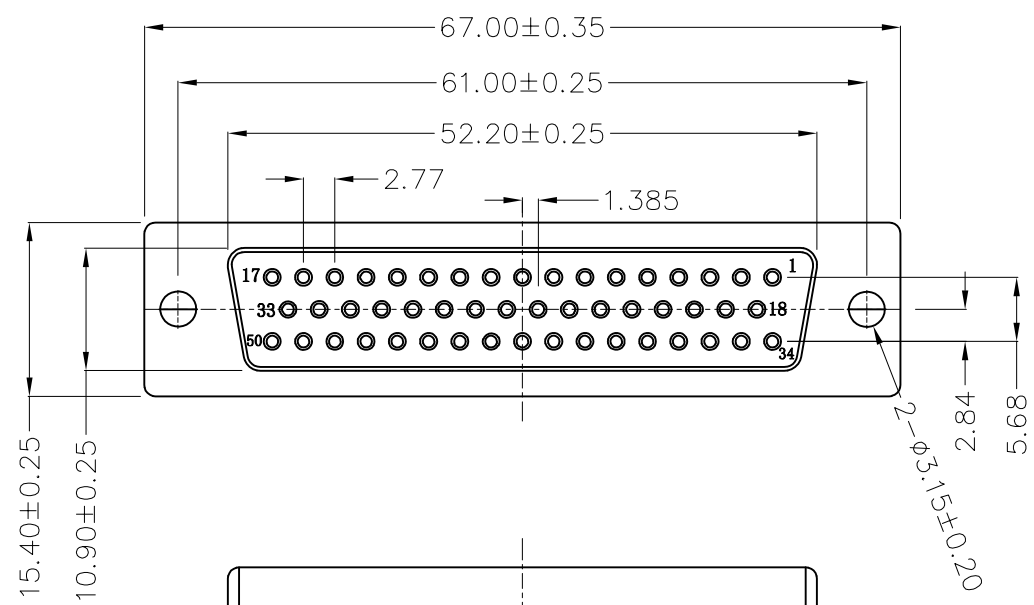
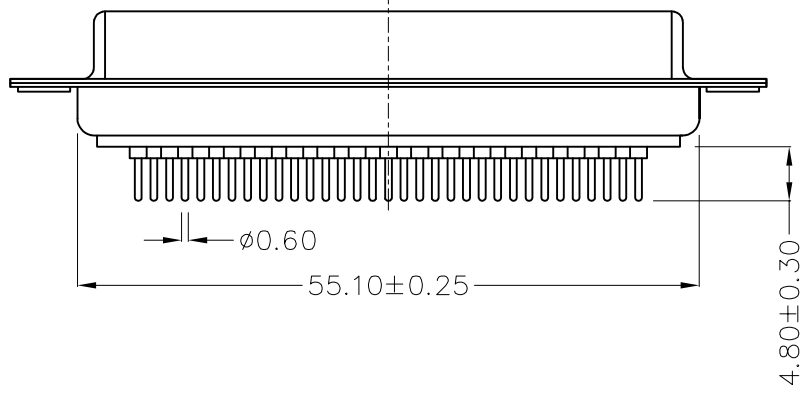


REV	LOCATIONS	DESCRIPTION	DATE	REVISER	APPD



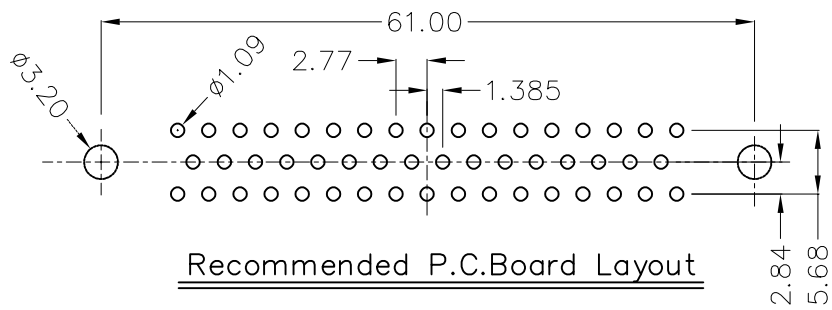
Materials And Finish
 Shell: Spcc Material, Front Nickel Plated 80μ" Min
 Back Shell: SPCC, Tin Plated 100μ" Min
 Insulator: PBT, UL 94V-0
 Contact Material: Brass /Gold Plated
 Electrical Characteristic
 Current Rating: 5.0A
 Voltage Rating: 500V
 Contact Resistance: 30mΩ Max
 Dielectric Withstanding Voltage : 500V AC r.m.s
 Insulation Resistance: 5000 MΩ Min @ 500V DC
 Temperature Range-Operating: -55°C ~ +105°C



Ordering Information

FDM 50 02 - F0 D S 1 XX XX K A
 1 2 3 4 5 6 7 8 9 10 11

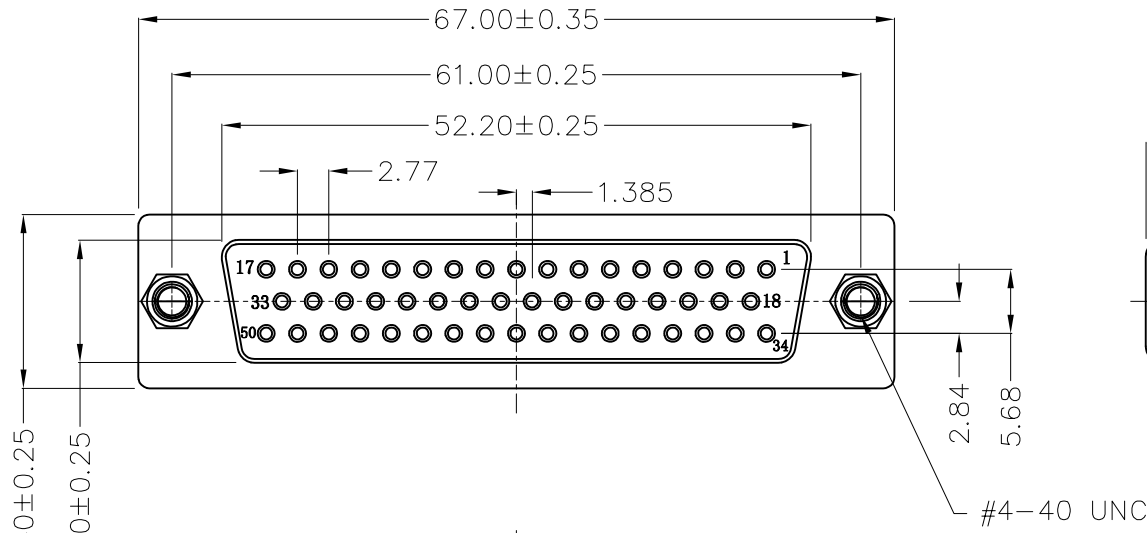
1 Category FDM-Machined pin D-SUB connector	2 Circuits 50	3 Distinction No. 02	4 Type F0-Female	5 Assembly Layout D-DIP
6 Entry Angle S-180° Vertical	7 Plating 1-Gold Plated	8 Thickness of Plating 01-1μ" 03-3μ" Custom plate available	9 Color-Resin WH-White BK-Black	10 Packaging K-Tray
				11 Type A-A type



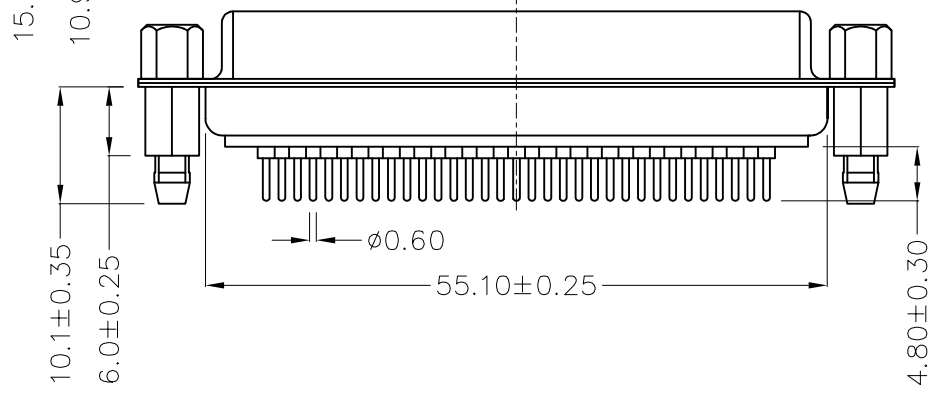
Recommended P.C.Board Layout

 THIRD ANGLE PROJECTION DESIGN UNITS Inch (metric) SCALE 5:1 SIZE A4	GENERAL TOLERANCES (UNLESS SPECIFIED) X.±.012(0.30) X:±5' X.X±.008(0.20) .X'±2' X.XX±.006(0.15) .XX'±1' X.XXX±.004(0.10) .XXX'±0.5'		APPROVE BY FRANK CHECKED BY CHERRY DRAWN BY MATT	DATE 02/JUN/22 DATE 02/JUN/22 DATE 02/JUN/22	PART NO. FDM5002-F0DS1XXXXKA ITEM NO. FDM5002	 Leader Of Industry REV 0 SHEET NO. 1/1
	THIS DRAWING CONTAINS INFORMATION THAT IS PROPRIETARY TO TXGA INDUSTRIAL ELECTRONICS(S.Z)CO.,LTD AND SHOULD NOT BE USED WITHOUT WRITTEN PERMISSION					

REV	LOCATIONS	DESCRIPTION	DATE	REVISER	APPD



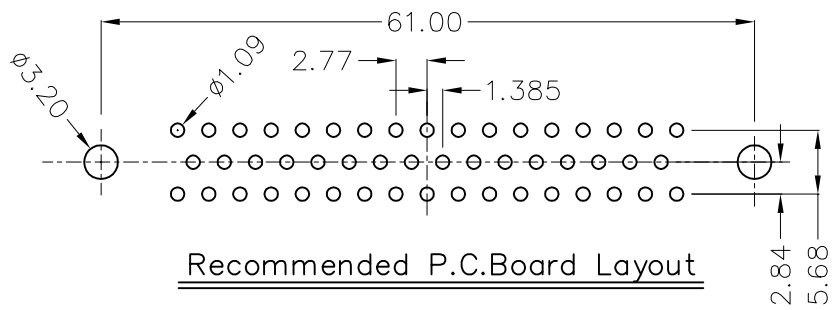
Materials And Finish
 Shell: Spcc Material, Front Nickel Plated 80µ" Min
 Back Shell: SPCC, Tin Plated 100µ" Min
 Insulator: PBT, UL 94V-0
 Contact Material: Brass /Gold Plated
 Electrical Characteristic
 Current Rating: 5.0A
 Voltage Rating: 500V
 Contact Resistance: 30mΩ Max
 Dielectric Withstanding Voltage : 500V AC r.m.s
 Insulation Resistance: 5000 MΩ Min @ 500V DC
 Temperature Range-Operating: -55°C ~ +105°C



Ordering Information

FDM 50 02 - F0 D S 1 XX XX K F
 1 2 3 4 5 6 7 8 9 10 11

1 Category FDM-Machined pin D-SUB connector	2 Circuits 50	3 Distinction No. 01	4 Type F0-Female	5 Assembly Layout D-DIP
6 Entry Angle S-180° Vertical	7 Plating 1-Gold Plated	8 Thickness of Plating 01-1µ" 03-3µ" Custom plate available	9 Color-Resin WH-White BK-Black	10 Packaging K-Tray
				11 Type F-F type



Recommended P.C.Board Layout

 THIRD ANGLE PROJECTION DESIGN UNITS Inch (metric) SCALE 5:1 SIZE A4	GENERAL TOLERANCES (UNLESS SPECIFIED)		APPROVE BY FRANK	DATE 02/JUN/22	PART NO. FDM5002-F0DS1XXXXKF	ITEM NO. FDM5002	 Leader Of Industry REV 0 SHEET NO. 1/1
	X.±0.12(0.30)	X:±5'	CHECKED BY CHERRY	DATE 02/JUN/22	TITLE Machined pin D-SUB connector 180° Vertical Female(DIP)		
	X.X±.008(0.20)	.X'±2'	DRAWN BY MATT	DATE 02/JUN/22	THIS DRAWING CONTAINS INFORMATION THAT IS PROPRIETARY TO TXGA INDUSTRIAL ELECTRONICS(S.Z)CO.,LTD AND SHOULD NOT BE USED WITHOUT WRITTEN PERMISSION		
	X.XX±.006(0.15)	.XX±1'					
	X.XXX±.004(0.10)	.XXX±0.5'					