

1 2 3 4 5 6 7 8

REV	LOCATIONS	DESCRIPTION	DATE	REVISER	APPD

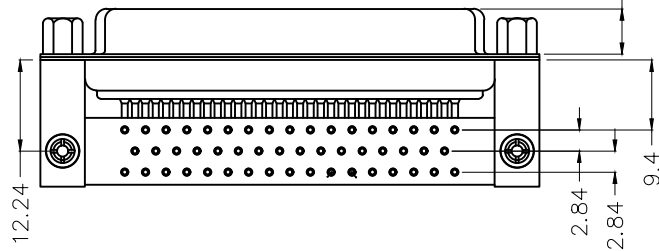
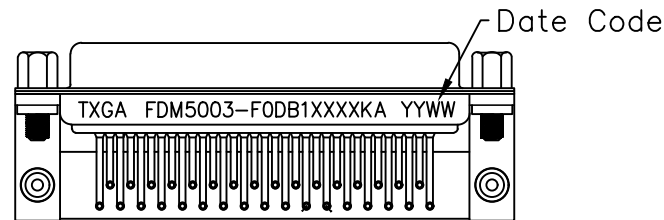
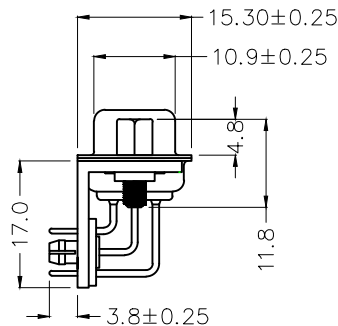
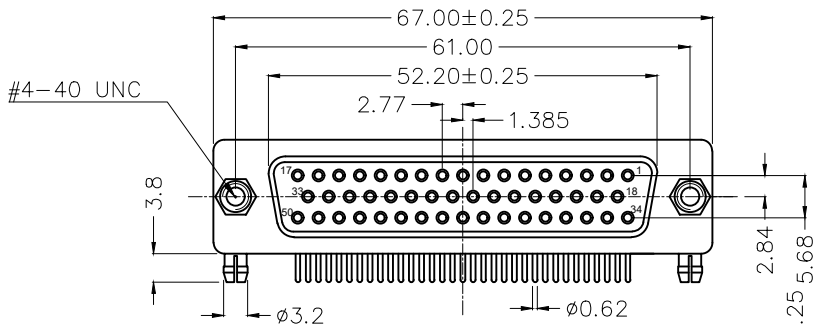
SPECIFICATION

Electrical

Current Rating: 5A
 Voltage Rating: 300V
 Contact resistance: 30mΩ Max
 Insulation resistance: 3000MΩ Min. at 500V DC
 Dielectric Withstanding Voltage :500V AC r.m.s Min
 Temperature Range-Operating: -55°C ~ +105°C

Material and Plating

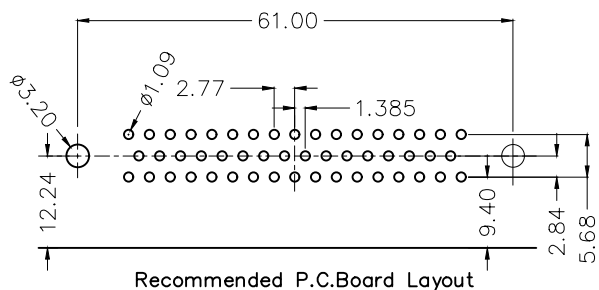
Insulator: PBT (UL94V-0)
 Contact: Copper Alloy/ Gold plated
 Shell: SPCC/ Front Nickel plated, Back Tin plated
 Board Lock: Copper Alloy/ Tin Plated
 Screws: Carbon steel/ Nickel Plated



Ordering Information

FDM 50 03 - F0 D B 1 XX XX K A
 1 2 3 4 5 6 7 8 9 10 11

1 Category FDM-Machined pin D-SUB connector	2 Circuits 50	3 Distinction No. 03	4 Type F0-Female	5 Assembly Layout D-DIP
6 Entry Angle B-90° Angle	7 Plating 1-Gold Plated	8 Thickness of Plating 01-1μ" 03-3μ" Custom plate available	9 Color-Resin WH-White BK-Black	10 Packaging K-Tray
				11 Type A-A type



<p>THIRD ANGLE PROJECTION</p>	GENERAL TOLERANCES (UNLESS SPECIFIED)		APPROVE BY LEO	DATE 30/JAN/22	PART NO. FDM5003-F0DB1XXXXKA	ITEM NO. FDM5003	<p>Building Technology Cornerstone</p>
	X. ±0.30	X.* ±5°	CHECKED BY GISELLE	DATE 30/JAN/22	TITLE Machined pin D-SUB connector 90° Angle Female(DIP)		
DESIGN UNITS METRIC(mm)	X.X ±0.20	X.X* ±2°	DRAWN BY MATT	DATE 30/JAN/22	THIS DRAWING CONTAINS INFORMATION THAT IS PROPRIETARY TO TXGA INDUSTRIAL ELECTRONICS(S.Z)CO.,LTD AND SHOULD NOT BE USED WITHOUT WRITTEN PERMISSION		
SCALE 5:1	SIZE A4	X.XX ±0.15					
		X.XXX ±0.10					

1 2 3 4 5 6 7 8