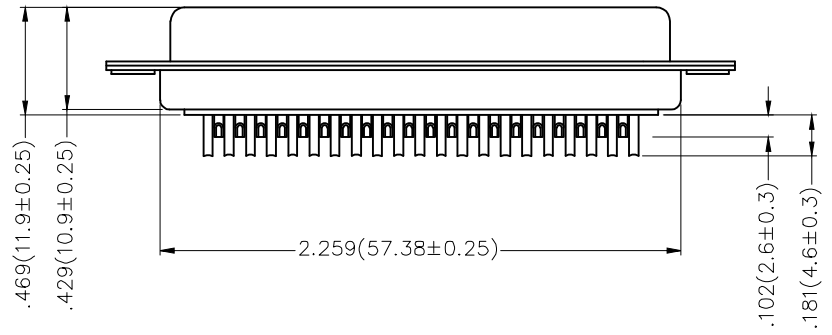
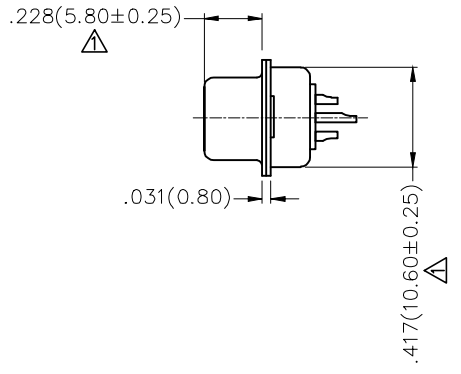
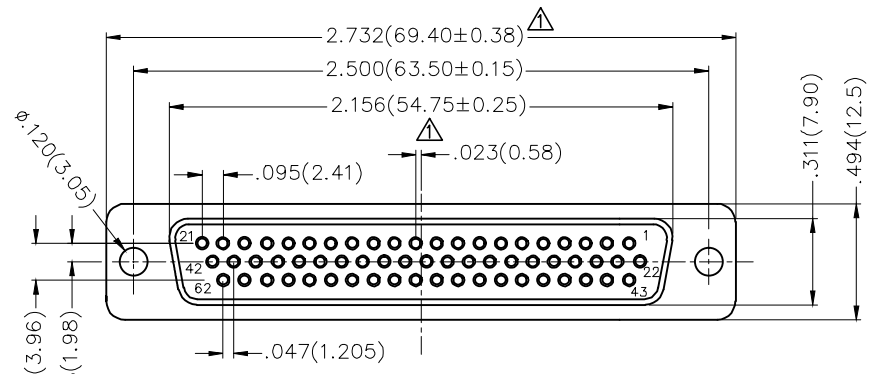


REV	LOCATIONS	DESCRIPTION	DATE	REVISER	APPD
1	△	Size changes	25/APR/21	KATE	JOHNNY



Ordering Information

FDM 62 11 — F0 W S 1 XX XX X
1 2 3 4 5 6 7 8 9 10

1 Category FDM—Machined pin D-SUB connector	2 Circuits 62	3 Distinction No. 11	4 Type F0—Female	5 Assembly Layout W—Welding Type
6 Entry Angle S—180° Vertical	7 Plating 1—Gold Plated	8 Thickness of Plating 01—1μ* 03—3μ* Custom plate available	9 Color—Resin W1—White K6—Black	10 Packaging K—Tray L—Tube

Materials And Finish
 Shell: Spcc Material, Front Nickel Plated 80μ* Min
 Back Shell: SPCC, Tin Plated 100μ* Min
 Insulator: Glass Filled Thermoplastic, UL 94V-0
 Contact Material: Brass /Gold Plated
Electrical Characteristic
 Current Rating: 5.0A
 Voltage Rating: 300V
 Contact Resistance: 30mΩ Max
 Dielectric Withstanding Voltage :1000V AC r.m.s
 Insulation Resistance: 5000 MΩ Min.
 Temperature Range—Operating: -55°C ~ +105°C

 THIRD ANGLE PROJECTION	GENERAL TOLERANCES (UNLESS SPECIFIED)		APPROVE BY FRANK	DATE 16/SEP/19	PART NO. FDM6211-FOWS1XXXXX	ITEM NO. FDM6211-F0	 TXGA Leader Of Industry	
	X.±.012(0.30)	X.±5'	CHECKED BY CHERRY	DATE 16/SEP/19	TITLE Machined pin D-SUB connector 180° Vertical Male			REV 1
	X.X±.008(0.20)	.X'±2'	DRAWN BY ZOEY	DATE 16/SEP/19	THIS DRAWING CONTAINS INFORMATION THAT IS PROPRIETARY TO TXGA INDUSTRIAL ELECTRONICS(S.Z)CO.,LTD AND SHOULD NOT BE USED WITHOUT WRITTEN PERMISSION			SHEET NO. 1/1
DESIGN UNITS Inch (metric)	X.XX±.006(0.15)	.XX'±1'						
SCALE 5:1	SIZE A4	X.XXX±.004(0.10)	.XXX'±0.5'					