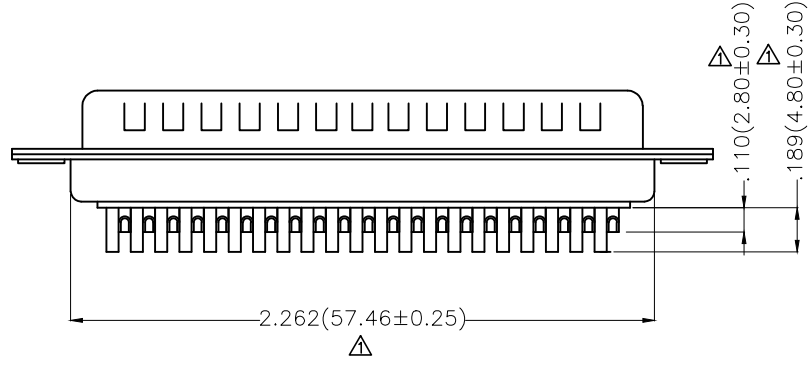
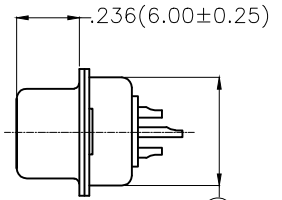
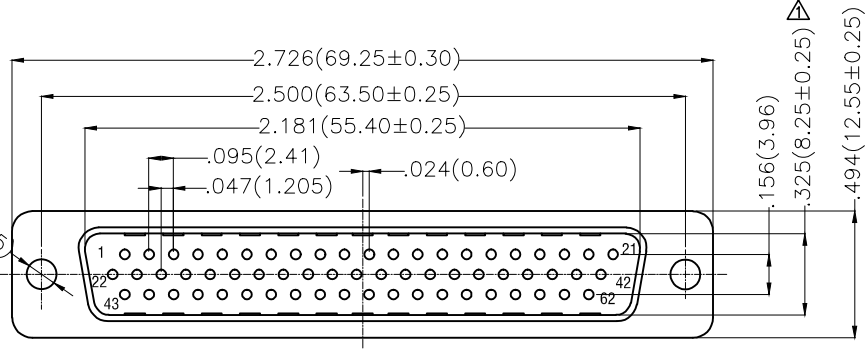
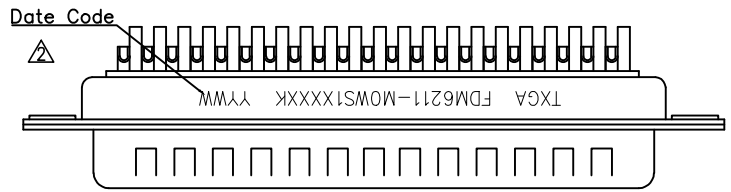


REV	LOCATIONS	DESCRIPTION	DATE	REVISER	APPD
1	△	Update Dimensions	06/SEP/24	MATT	LEO
2	△	Add marking code	13/JAN/25	NICK	LEO



Ordering Information

FDM 62 11 — MO W S 1 XX XX K
 1 2 3 4 5 6 7 8 9 10

Material and Plating
 Insulator: PBT+30%GF (UL94 V-0)
 Contact: Brass/ Gold plated
 Front Shell: SPCC/ Nickel plated
 Back Shell: SPCC/ Tin plated

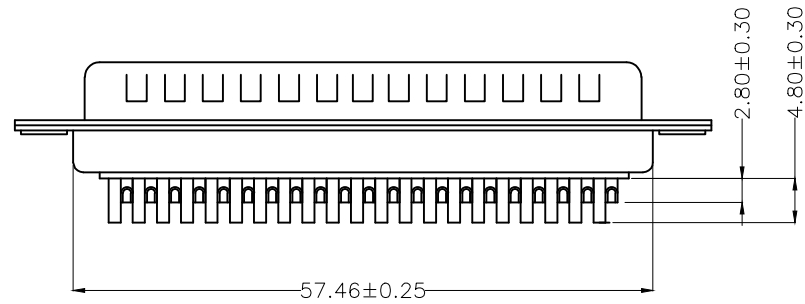
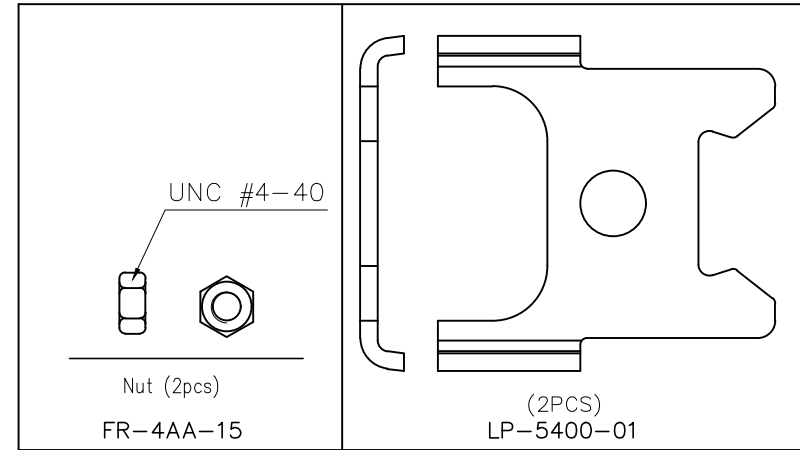
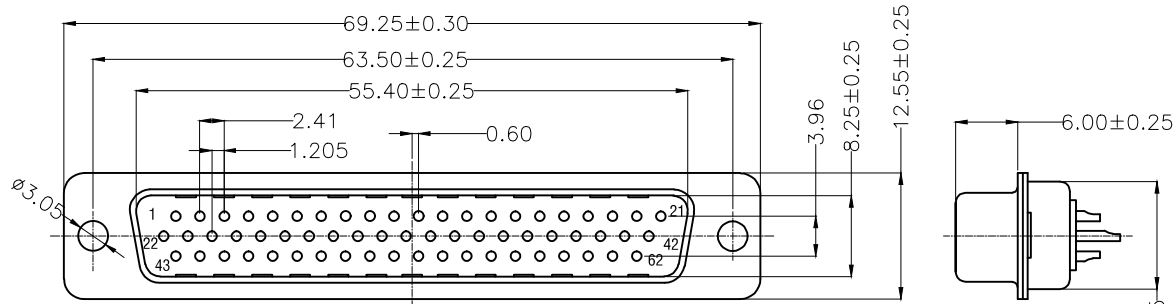
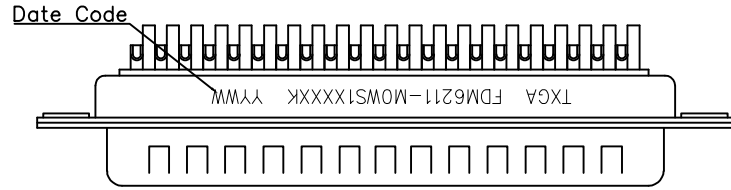
Electrical
 Current Rating: 5A
 Voltage Rating: 300V
 Contact resistance: 30 mΩ Max
 Insulation resistance: 5000 MΩ Min. at 500V DC
 Dielectric Withstanding Voltage :1000V AC r.m.s Min
 Temperature Range-Operating: -55°C ~ +105°C

1 <u>Category</u> FDM-Machined pin D-SUB connector	2 <u>Circuits</u> 62	3 <u>Distinction No.</u> 11	4 <u>Type</u> MO-Male	5 <u>Assembly Layout</u> W-Welding
6 <u>Entry Angle</u> S-180° Vertical	7 <u>Plating</u> 1-Gold Plated	8 <u>Thickness of Plating</u> 01-1μ" 03-3μ" Custom plate available	9 <u>Color-Resin</u> W1-White K6-Black	10 <u>Packaging</u> K-Tray

THIRD ANGLE PROJECTION	GENERAL TOLERANCES (UNLESS SPECIFIED)		APPROVE BY FRANK	DATE 23/JUL/13	PART NO. FDM6211-MOWS1XXXXK	ITEM NO. FDM6211-MO		
	DESIGN UNITS Inch (metric)	X.±.012(0.30) X.X±.008(0.20) X.XX±.006(0.15) X.XXX±.004(0.10)	X.±5° .X'±2° .XX'±1° .XXX'±0.5°	CHECKED BY CHERRY	DATE 23/JUL/13	TITLE D-SUB MACHINED MALE PIN CONN		
	SCALE 5:1	SIZE A4	DRAWN BY JACOB	DATE 23/JUL/13	THIS DRAWING CONTAINS INFORMATION THAT IS PROPRIETARY TO TXGA INDUSTRIAL ELECTRONICS(S.Z)CO.,LTD AND SHOULD NOT BE USED WITHOUT WRITTEN PERMISSION			

REV 2 SHEET NO. 1/1

6	7	8
REV	LOCATIONS	DESCRIPTION



Ordering Information

FDM 62 11 — MO W S 1 XX XX K A
 1 2 3 4 5 6 7 8 9 10 11

Material and Plating

Insulator: PBT+30%GF (UL94 V-0)
 Contact: Brass/ Gold plated
 Front Shell: SPCC/ Nickel plated
 Back Shell: SPCC/ Tin plated
 Nut: Carbon steel/Nickel Plated

Electrical

Current Rating: 5A
 Voltage Rating: 300V
 Contact resistance: 30 mΩ Max
 Insulation resistance: 5000 MΩ Min. at 500V DC
 Dielectric Withstanding Voltage :1000V AC r.m.s Min
 Temperature Range-Operating: -55°C ~ +105°C

1 Category FDM-Machined pin D-SUB connector	2 Circuits 62	3 Distinction No. 11	4 Type MO-Male	5 Assembly Layout W-Welding
6 Entry Angle S-180° Vertical	7 Plating 1-Gold Plated	8 Thickness of Plating 01-1μ" 03-3μ" Custom plate available	9 Color-Resin W1-White K6-Black	10 Packaging K-Tray
				11 Distinction Type A-Type A

THIRD ANGLE PROJECTION	GENERAL TOLERANCES (UNLESS SPECIFIED)		APPROVE BY LEO	DATE 15/JAN/23	PART NO. FDM6211-MOWS1XXXXX	ITEM NO. FDM6211-MO	 Building Technology Cornerstone
	X. ±0.30	X.* ±5°	CHECKED BY GISELLE	DATE 15/JAN/23	TITLE D-SUB MACHINED MALE PIN CONN		
DESIGN UNITS METRIC	X.X ±0.20	X.X* ±2°			REV 0	SHEET NO. 1/1	
SCALE 5:1	SIZE A4	X.XX ±0.15	DRAWN BY NICK	DATE 15/JAN/23	THIS DRAWING CONTAINS INFORMATION THAT IS PROPRIETARY TO TXGA INDUSTRIAL ELECTRONICS(S.Z)CO.,LTD AND SHOULD NOT BE USED WITHOUT WRITTEN PERMISSION		
		X.XXX ±0.10					