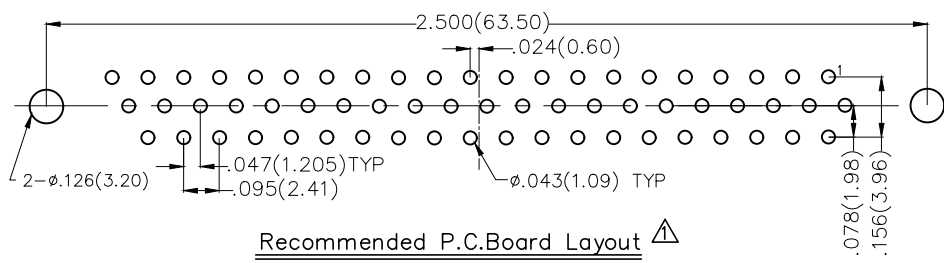
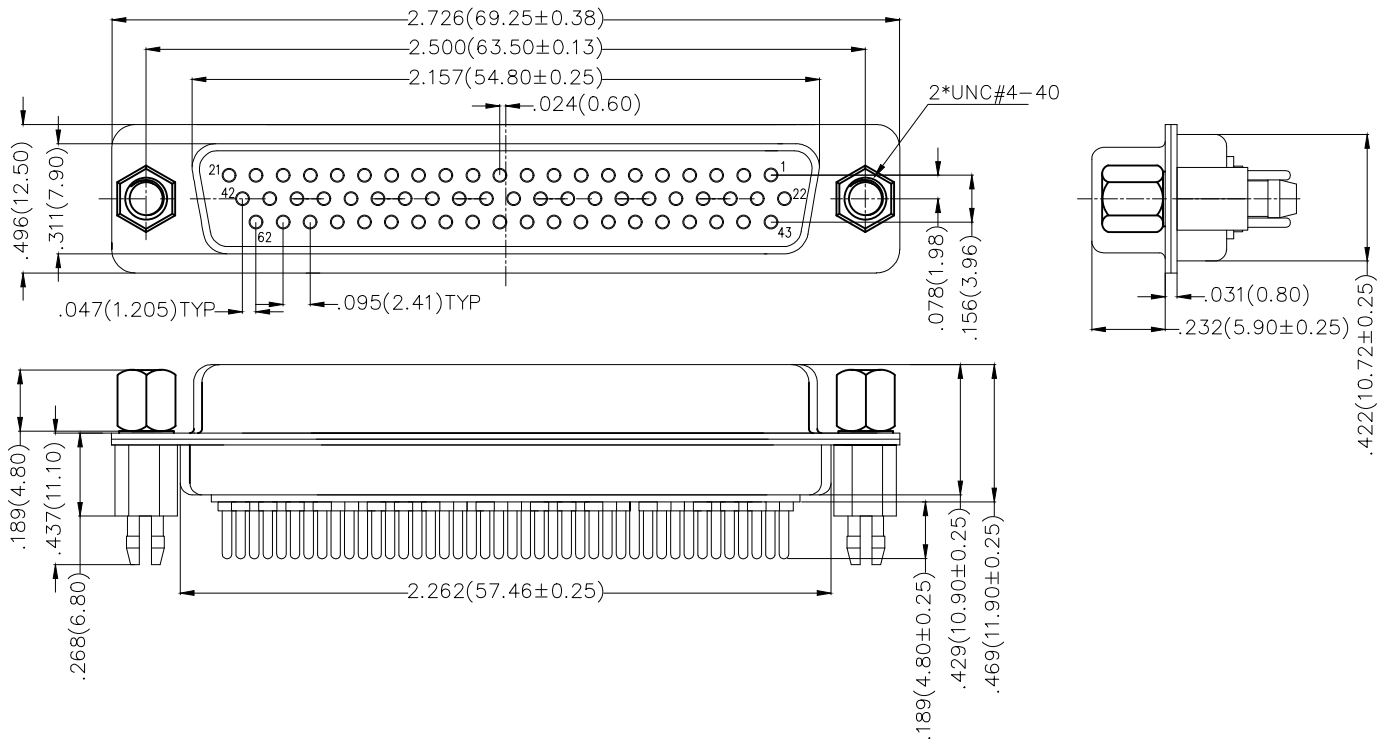


REV	LOCATIONS	DESCRIPTION	DATE	REVISER	APPD
1	△	Correct PCB board size	9/May/25	NICK	LEO




Ordering Information

FDM 62 15 - F0 D S 1 XX XX X
 1 2 3 4 5 6 7 8 9 10

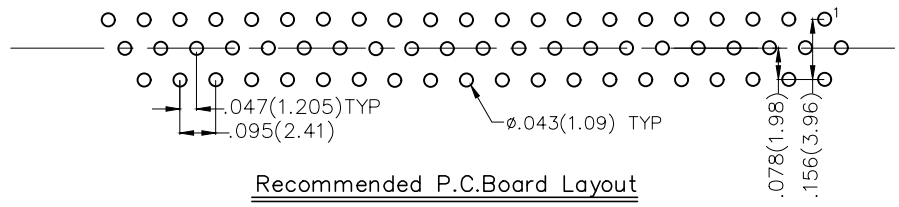
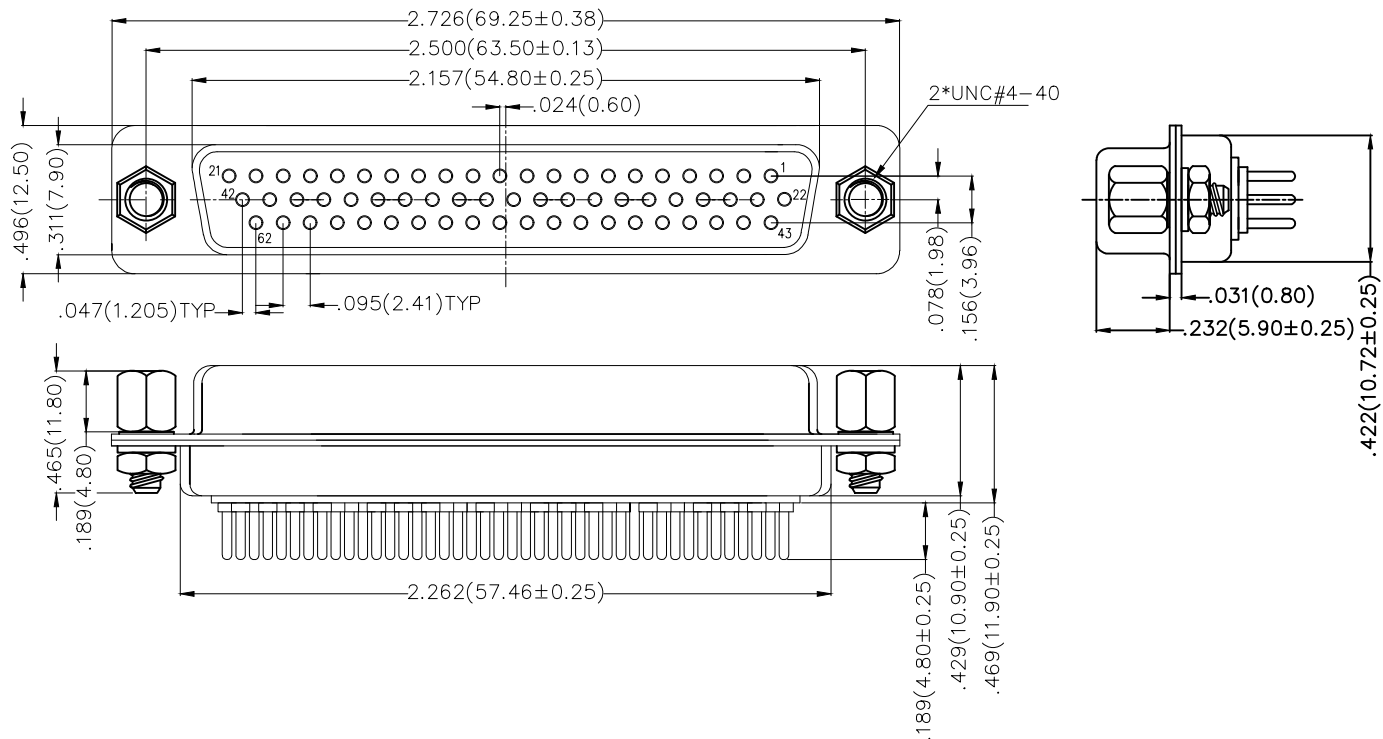
1 Category FDM-Machined pin D-SUB connector	2 Circuits 62	3 Distinction No. 15	4 Type F0-Female	5 Assembly Layout D-DIP
6 Entry Angle S-180° Vertical	7 Plating 1-Gold Plated	8 Thickness of Plating 01-1µ" 03-03µ"	9 Color-Resin W1-White K6-Black	10 Packaging K-Tray L-Tube

Materials And Finish
 Shell: Steel Material, Front Nickel Plated
 Back Shell Tin Plated
 Insulator: PBT Thermoplastic, UL 94V-0, Colour: Black
 Contact Material: Brass /Gold Plated
Electrical Characteristic
 Contact Current Rating: 5A
 Contact Resistance : 30mΩ Max
 Dielectric Withstanding Voltage : 1000V AC r.m.s Min
 Insulation Resistance: 5000 Megaohms Min.
 Temperature Range-Operating: -55°C ~ +105°C

Recommended P.C. Board Layout △

THIRD ANGLE PROJECTION		GENERAL TOLERANCES (UNLESS SPECIFIED)		APPROVE BY	DATE	PART NO.	ITEM NO.	 Leader Of Industry	
DESIGN UNITS Inch (metric)	X.±.012(0.30)	X.±5'	CHECKED BY	FRANK	23/JUL/16	FDM6215-FODS1XXXXX	FDM6215		
	X.X±.008(0.20)	.X'±2'	JACOB	23/JUL/16	TITLE	Machined pin D-SUB connector 180° Vertical Female			
	X.XX±.006(0.15)	.XX'±1'	DRAWN BY	CHERRY	23/JUL/16	THIS DRAWING CONTAINS INFORMATION THAT IS PROPRIETARY TO TXGA INDUSTRIAL ELECTRONICS(S.Z)CO.,LTD AND SHOULD NOT BE USED WITHOUT WRITTEN PERMISSION			
SCALE 5:1	SIZE A4	X.XXX±.004(0.10)	.XXX'±0.5'					REV 1	SHEET NO. 1/1

REV	LOCATIONS	DESCRIPTION	DATE	REVSER	APPD



Ordering Information

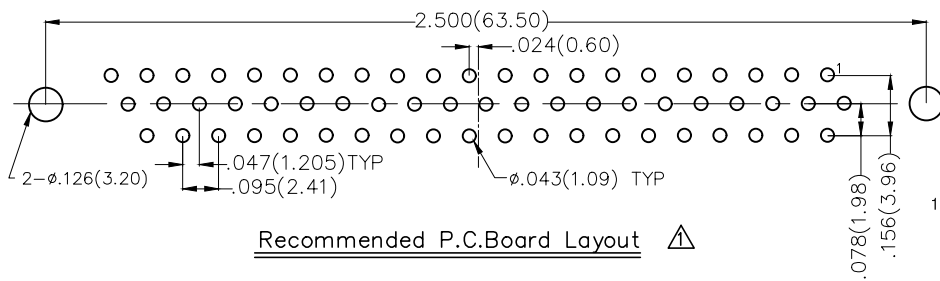
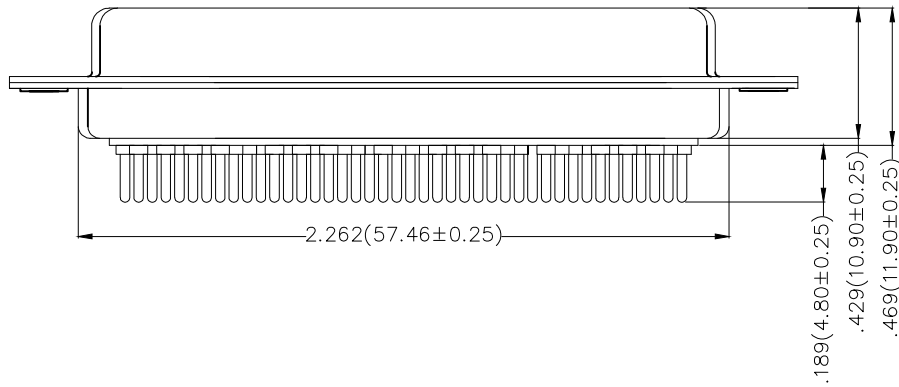
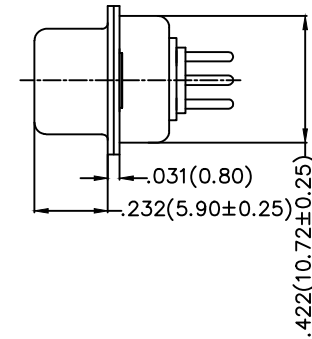
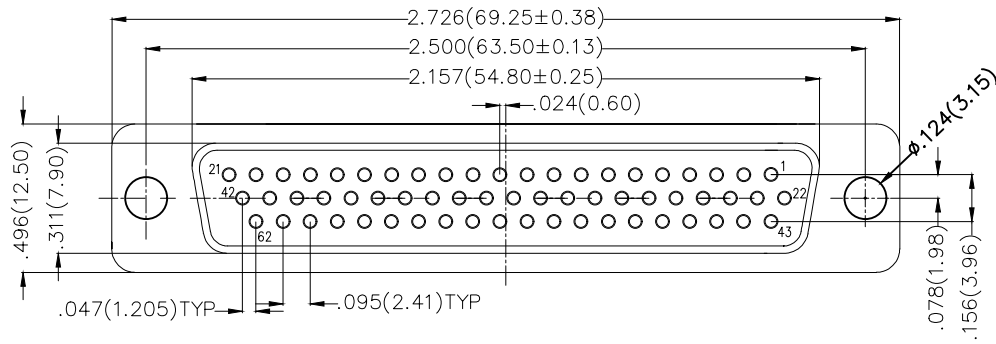
FDM 62 15 — F0 D S 1 XX XX X A
 1 2 3 4 5 6 7 8 9 10 11

1 Category FDM-Machined pin D-SUB connector	2 Circuits 62	3 Distinction No. 15	4 Type F0-Female	5 Assembly Layout D-DIP
6 Entry Angle S-180° Vertical	7 Plating 1-Gold Plated	8 Thickness of Plating 01-1μ" 03-03μ"	9 Color-Resin W1-White K6-Black	10 Packaging K-Tray L-Tube
		11 Distinction Type A-Type A		

Materials And Finish
 Shell: Steel Material, Front Nickel Plated
 Back Shell Tin Plated
 Insulator: PBT Thermoplastic, UL 94V-0, Colour: Black
 Contact Material: Brass /Gold Plated
 Electrical Characteristic
 Contact Current Rating: 5A
 Contact Resistance : 30mΩ Max
 Dielectric Withstanding Voltage : 1000V AC r.m.s Min
 Insulation Resistance: 5000 Megaohms Min.
 Temperature Range-Operating: -55°C ~ +105°C

 THIRD ANGLE PROJECTION	GENERAL TOLERANCES (UNLESS SPECIFIED)		APPROVE BY FRANK	DATE 23/JUL/13	PART NO. FDM6215-F0DS1XXXXXA	ITEM NO. FDM6215	 Leader Of Industry
	DESIGN UNITS Inch (metric)	X.±.012(0.30) X.X±.008(0.20) X.XX±.006(0.15) X.XXX±.004(0.10)	X.±5° .X±2° .XX±1° .XXX±0.5°	CHECKED BY CHERRY	DATE 23/JUL/13	TITLE Machined pin D-SUB connector 180° Vertical Female	
SCALE 5:1	SIZE A4		DRAWN BY JACOB	DATE 23/JUL/13	THIS DRAWING CONTAINS INFORMATION THAT IS PROPRIETARY TO TXGA INDUSTRIAL ELECTRONICS(S.Z)CO.,LTD AND SHOULD NOT BE USED WITHOUT WRITTEN PERMISSION		REV 0 SHEET NO. 1/1

REV	LOCATIONS	DESCRIPTION	DATE	REVISER	APPD
1	△	Correct PCB board size	9/May/25	NICK	LEO



Ordering Information

FDM 62 15 — F0 D S 1 XX XX X B
 1 2 3 4 5 6 7 8 9 10 11

1 Category FDM-Machined pin D-SUB connector	2 Circuits 62	3 Distinction No. 15	4 Type F0-Female	5 Assembly Layout D-DIP
6 Entry Angle S-180° Vertical	7 Plating 1-Gold Plated	8 Thickness of Plating 01-1μ" 03-03μ"	9 Color-Resin W1-White K6-Black	10 Packaging K-Tray L-Tube
		11 Distinction Type B-Type B		

Materials And Finish
 Shell: Steel Material, Front Nickel Plated
 Back Shell Tin Plated
 Insulator: PBT Thermoplastic, UL 94V-0, Colour: Black
 Contact Material: Brass /Gold Plated
 Electrical Characteristic
 Contact Current Rating: 5A
 Contact Resistance : 30mΩ Max
 Dielectric Withstanding Voltage : 1000V AC r.m.s Min
 Insulation Resistance: 5000 Megahms Min.
 Temperature Range-Operating: -55°C ~ +105°C

THIRD ANGLE PROJECTION		GENERAL TOLERANCES (UNLESS SPECIFIED)		APPROVE BY	DATE	PART NO.	ITEM NO.	TXGA Leader Of Industry
DESIGN UNITS Inch (metric)	X.±.012(0.30)	X.±5'	CHECKED BY	FRANK	23/JUL/13	FDM6215-F0DS1XXXXXB	FDM6215	
	X.X±.008(0.20)	.X'±2'	CHECKED BY	CHERRY	23/JUL/13	TITLE Machined pin D-SUB connector 180° Vertical Female		
	SCALE 5:1	X.XX±.006(0.15)	.XX'±1'	DRAWN BY	JACOB	23/JUL/13	THIS DRAWING CONTAINS INFORMATION THAT IS PROPRIETARY TO TXGA INDUSTRIAL ELECTRONICS(S.Z)CO.,LTD AND SHOULD NOT BE USED WITHOUT WRITTEN PERMISSION	