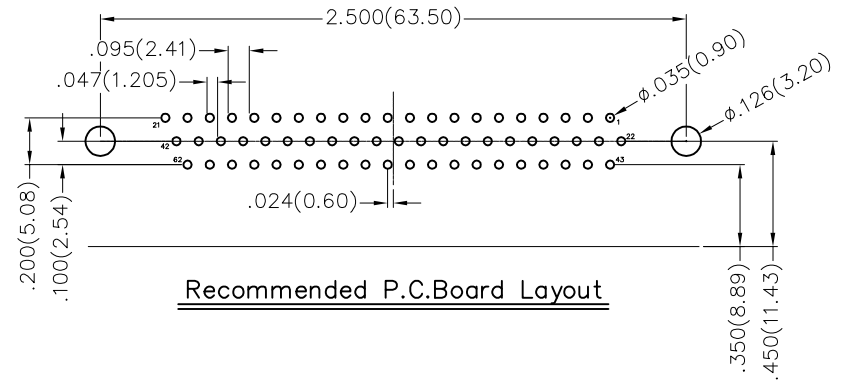
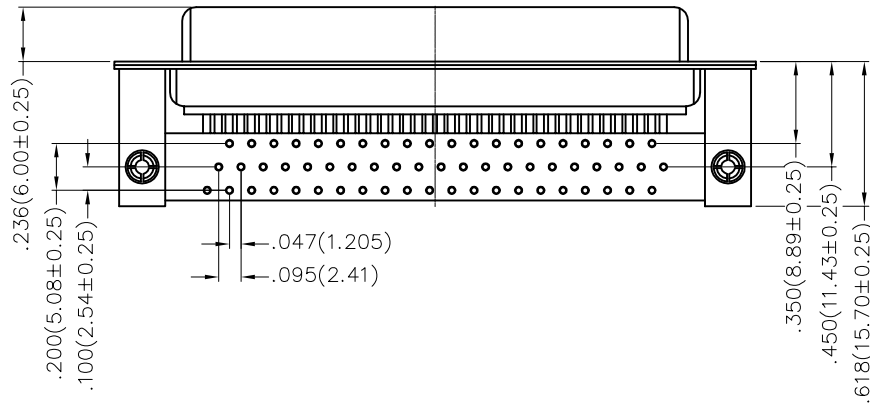
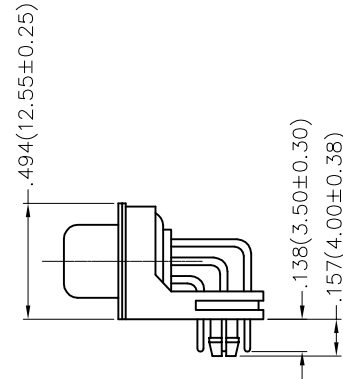
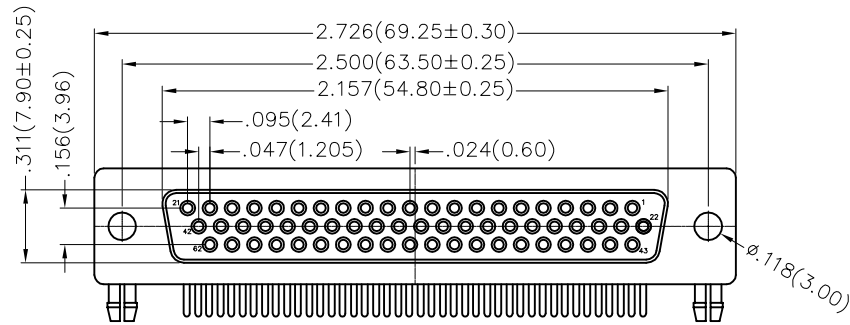


REV	LOCATIONS	DESCRIPTION	DATE	REVISER	APPD



### Ordering Information

FDM 62 25 - F0 D B 1 XX XX X A  
 1 2 3 4 5 6 7 8 9 10 11

### SPECIFICATION

#### Electrical

Current Rating: 5A  
 Voltage Rating: 300V  
 Contact resistance: 30mΩ Max  
 Insulation resistance: 5000MΩ Min. at 500V DC  
 Dielectric Withstanding Voltage :1000V AC r.m.s Min  
 Temperature Range-Operating: -55°C ~ +105°C

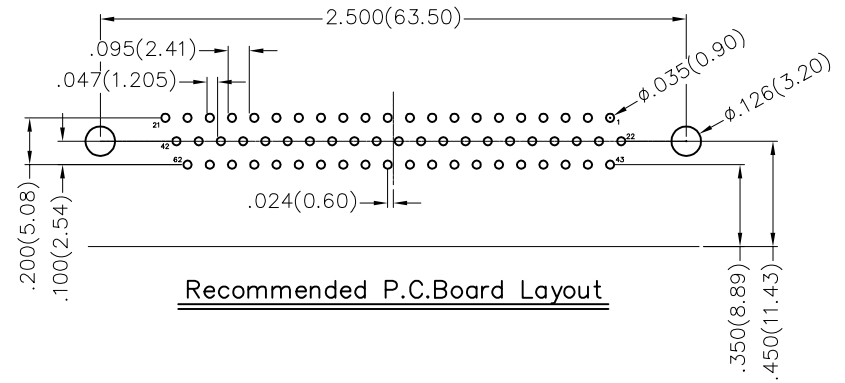
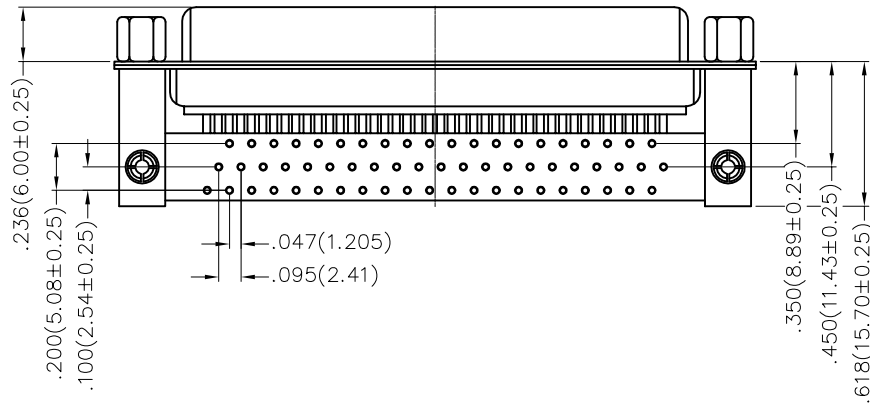
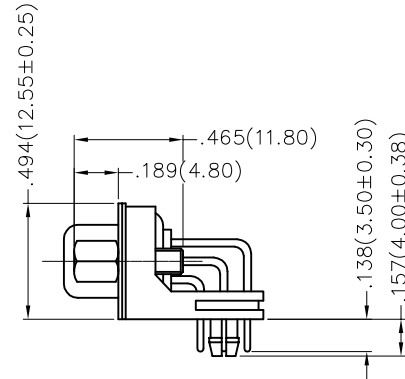
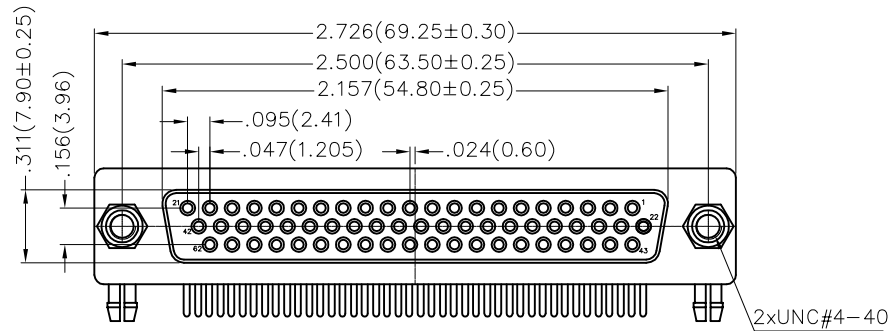
#### Material and Plating

Insulator: PBT +30% G.F (UL94V-0)  
 Contact: Brass/ Gold plated  
 Shell: SPCC/ Front Nickel plated, Back Tin plated

1 Category FDM-Machined pin D-SUB connector	2 Circuits 62	3 Distinction No. 25	4 Type F0-Female	5 Assembly Layout D-DIP	
6 Entry Angle B-90° Angle	7 Plating 1-Gold Plated	8 Thickness of Plating 01-1μ" 03-3μ" Custom plate available	9 Color-Resin W1-White K6-Black	10 Packaging K-Tray L-Tube	11 Distinction Type A-A Type

 THIRD ANGLE PROJECTION	GENERAL TOLERANCES (UNLESS SPECIFIED)		APPROVE BY FRANK	DATE 09/SEP/19	PART NO. FDM6225-F0DB1XXXXXA	ITEM NO. FDM6225	 Building Technology Cornerstone
	DESIGN UNITS Inch (metric)	X.±.012(0.30) X.X±.008(0.20)	X'±5' .X'±2'	CHECKED BY CHERRY	DATE 09/SEP/19	TITLE Machined pin D-SUB connector 90° Angle Female	
SCALE 5:1	SIZE A4	X.XX±.006(0.15) X.XXX±.004(0.10)	.XX'±1' .XX'±0.5'	DRAWN BY KATE	DATE 09/SEP/19	THIS DRAWING CONTAINS INFORMATION THAT IS PROPRIETARY TO TXGA INDUSTRIAL ELECTRONICS(S.Z)CO.,LTD AND SHOULD NOT BE USED WITHOUT WRITTEN PERMISSION	

REV	LOCATIONS	DESCRIPTION	DATE	REVISER	APPD



### Ordering Information

FDM 62 25 - F0 D B 1 XX XX X B  
 1 2 3 4 5 6 7 8 9 10 11

### SPECIFICATION

#### Electrical

Current Rating: 5A  
 Voltage Rating: 300V  
 Contact resistance: 30mΩ Max  
 Insulation resistance: 5000MΩ Min. at 500V DC  
 Dielectric Withstanding Voltage :1000V AC r.m.s Min  
 Temperature Range-Operating: -55°C ~ +105°C

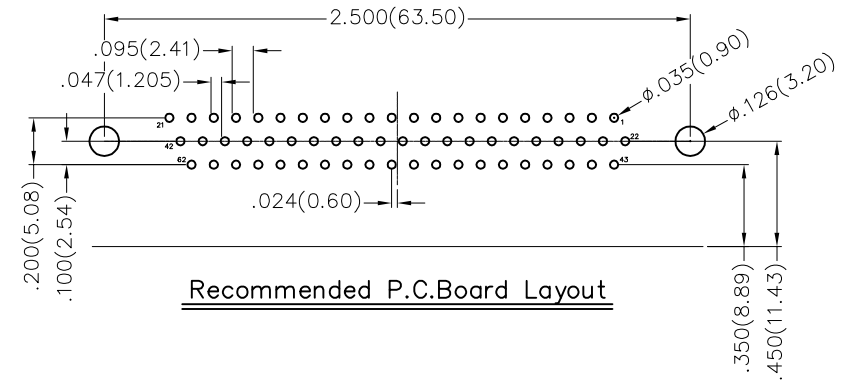
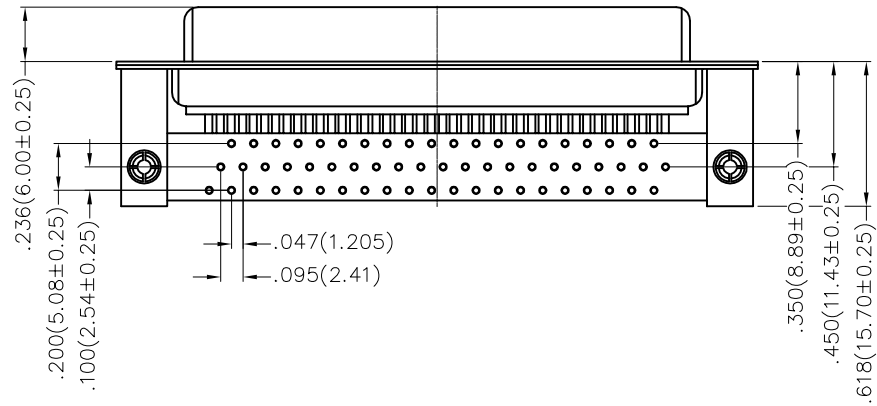
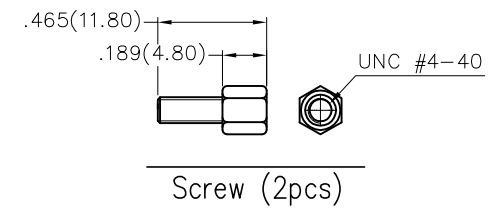
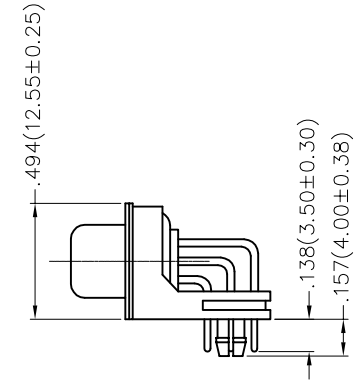
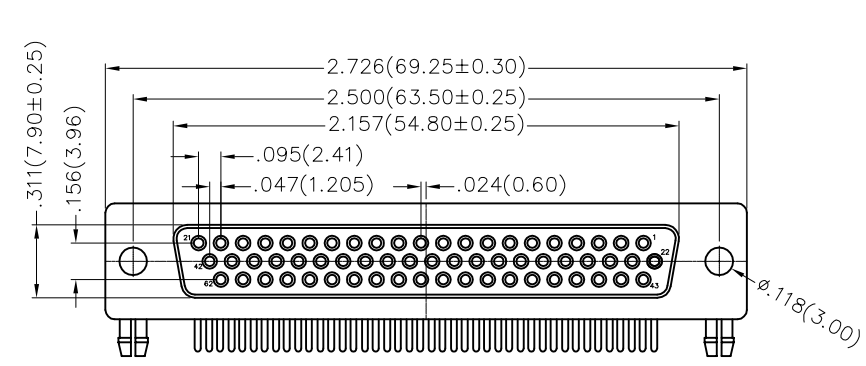
#### Material and Plating

Insulator: PBT +30% G.F (UL94V-0)  
 Contact: Brass/ Gold plated  
 Shell: SPCC/ Front Nickel plated, Back Tin plated

1 Category FDM-Machined pin D-SUB connector	2 Circuits 62	3 Distinction No. 25	4 Type F0-Female	5 Assembly Layout D-DIP
6 Entry Angle B-90° Angle	7 Plating 1-Gold Plated	8 Thickness of Plating 01-1μ" 03-3μ" Custom plate available	9 Color-Resin W1-White K6-Black	10 Packaging K-Tray L-Tube
			11 Distinction Type B-B Type	

THIRD ANGLE PROJECTION	GENERAL TOLERANCES (UNLESS SPECIFIED)		APPROVE BY FRANK	DATE 09/SEP/19	PART NO. FDM6225-F0DB1XXXXXB	ITEM NO. FDM6225	 Building Technology Cornerstone
	DESIGN UNITS Inch (metric)	X.±.012(0.30) X.X±.008(0.20)	X'±5' .X'±2'	CHECKED BY CHERRY	DATE 09/SEP/19	TITLE Machined pin D-SUB connector 90° Angle Female	
SCALE 5:1	SIZE A4	X.XX±.006(0.15) X.XXX±.004(0.10)	.XX'±1' .XX'±0.5'	DRAWN BY KATE	DATE 09/SEP/19	THIS DRAWING CONTAINS INFORMATION THAT IS PROPRIETARY TO TXGA INDUSTRIAL ELECTRONICS(S.Z)CO.,LTD AND SHOULD NOT BE USED WITHOUT WRITTEN PERMISSION	

REV	LOCATIONS	DESCRIPTION	DATE	REVISER	APPD



### Ordering Information

FDM 62 25 - F0 D B 1 XX XX X C  
 1 2 3 4 5 6 7 8 9 10 11

### SPECIFICATION

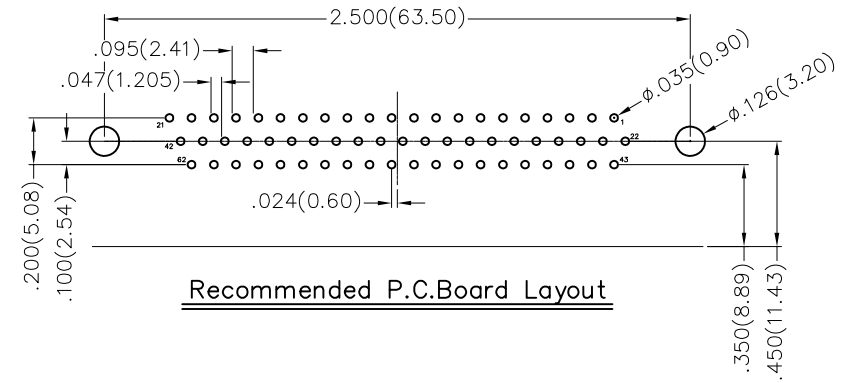
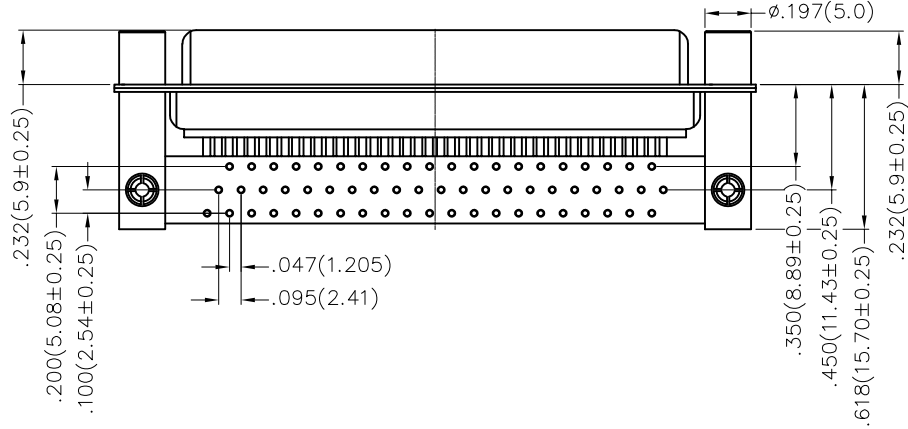
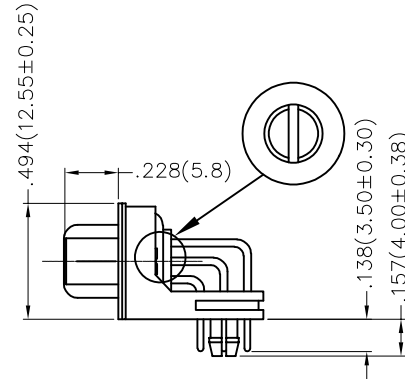
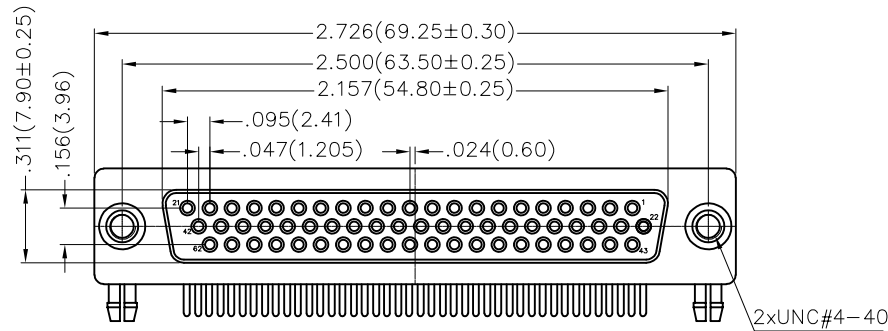
**Electrical**  
 Current Rating: 5A  
 Voltage Rating: 300V  
 Contact resistance: 30mΩ Max  
 Insulation resistance: 5000MΩ Min. at 500V DC  
 Dielectric Withstanding Voltage :1000V AC r.m.s Min  
 Temperature Range-Operating: -55°C ~ +105°C

**Material and Plating**  
 Insulator: PBT +30% G.F (UL94V-0)  
 Contact: Brass/ Gold plated  
 Shell: SPCC/ Front Nickel plated, Back Tin plated

1 Category	2 Circuits	3 Distinction No.	4 Type	5 Assembly Layout	
FDM-Machined pin D-SUB connector	62	25	F0-Female	D-DIP	
6 Entry Angle	7 Plating	8 Thickness of Plating	9 Color-Resin	10 Packaging	11 Distinction Type
B-90° Angle	1-Gold Plated	01-1μ" 03-3μ" Custom plate available	W1-White K6-Black	K-Tray L-Tube	C-C Type

 THIRD ANGLE PROJECTION	GENERAL TOLERANCES (UNLESS SPECIFIED)		APPROVE BY	DATE	PART NO.	ITEM NO.	 Building Technology Cornerstone
	X.±.012(0.30)	X:±5'	FRANK	09/SEP/19	FDM6225-F0DB1XXXXXC	FDM6225	
DESIGN UNITS Inch (metric)	X.X±.008(0.20)	.X'±2'	CHECKED BY	DATE	TITLE	REV 0 SHEET NO. 1/1	
SCALE 5:1	X.XX±.006(0.15)	.XX'±1'	CHERRY	09/SEP/19	Machined pin D-SUB connector 90° Angle Female	THIS DRAWING CONTAINS INFORMATION THAT IS PROPRIETARY TO TXGA INDUSTRIAL ELECTRONICS(S.Z)CO.,LTD AND SHOULD NOT BE USED WITHOUT WRITTEN PERMISSION	
SIZE A4	X.XXX±.004(0.10)	.XXX'±0.5'	DRAWN BY	DATE	KATE 09/SEP/19		

REV	LOCATIONS	DESCRIPTION	DATE	REVISER	APPD



Recommended P.C. Board Layout

Ordering Information

FDM 62 25 - F0 D B 1 XX XX X D  
 1 2 3 4 5 6 7 8 9 10 11

SPECIFICATION

Electrical  
 Current Rating: 5A  
 Voltage Rating: 300V  
 Contact resistance: 30mΩ Max  
 Insulation resistance: 5000MΩ Min. at 500V DC  
 Dielectric Withstanding Voltage :1000V AC r.m.s Min  
 Temperature Range-Operating: -55°C ~ +105°C

Material and Plating  
 Insulator: PBT +30% G.F (UL94V-0)  
 Contact: Brass/ Gold plated  
 Shell: SPCC/ Front Nickel plated, Back Tin plated

1 Category FDM-Machined pin D-SUB connector	2 Circuits 62	3 Distinction No. 25	4 Type F0-Female	5 Assembly Layout D-DIP
6 Entry Angle B-90° Angle	7 Plating 1-Gold Plated	8 Thickness of Plating 01-1μ" 03-3μ" Custom plate available	9 Color-Resin W1-White K6-Black	10 Packaging K-Tray L-Tube
		11 Distinction Type D-D Type		

THIRD ANGLE PROJECTION	GENERAL TOLERANCES (UNLESS SPECIFIED)		APPROVE BY FRANK	DATE 09/SEP/19	PART NO. FDM6225-F0DB1XXXXXD	ITEM NO. FDM6225	 Building Technology Cornerstone
	DESIGN UNITS Inch (metric)	X.±.012(0.30) X.X±.008(0.20)	X.±5' .X'±2'	CHECKED BY CHERRY	DATE 09/SEP/19	TITLE Machined pin D-SUB connector 90° Angle Female	
SCALE 5:1	SIZE A4	X.XX±.006(0.15) X.XXX±.004(0.10)	.XX'±1' .XXX'±0.5'	DRAWN BY KATE	DATE 09/SEP/19	THIS DRAWING CONTAINS INFORMATION THAT IS PROPRIETARY TO TXGA INDUSTRIAL ELECTRONICS(S.Z)CO.,LTD AND SHOULD NOT BE USED WITHOUT WRITTEN PERMISSION	